

TREE LEGEND

- Canopy Trees
- LO Live Oak
 - CO Chinquapin Oak
 - LE Lacebark Elm
 - SO Shumard Oak

SHRUB LEGEND

- NR Nellie R. Stevens Holly
- CZ Cenizo
- WM Dwarf Wax Myrtle
- DB Dwarf Burford Holly

LANDSCAPE NOTES

- The project will have an underground automatic irrigation system to water all new plantings.
- Install 4" layer of shredded hardwood mulch to all planting beds.
- Install 4" Benda Board edging between all shrub beds and grass areas.
- Shrub beds to have 12 inches of prepared planting mix (75% import topsoil, 15% composted amendment, 10% washed sand).
- Shredded hardwood mulch must be contain long strands along with double shred liner material obtained from a local source.

NOTE:

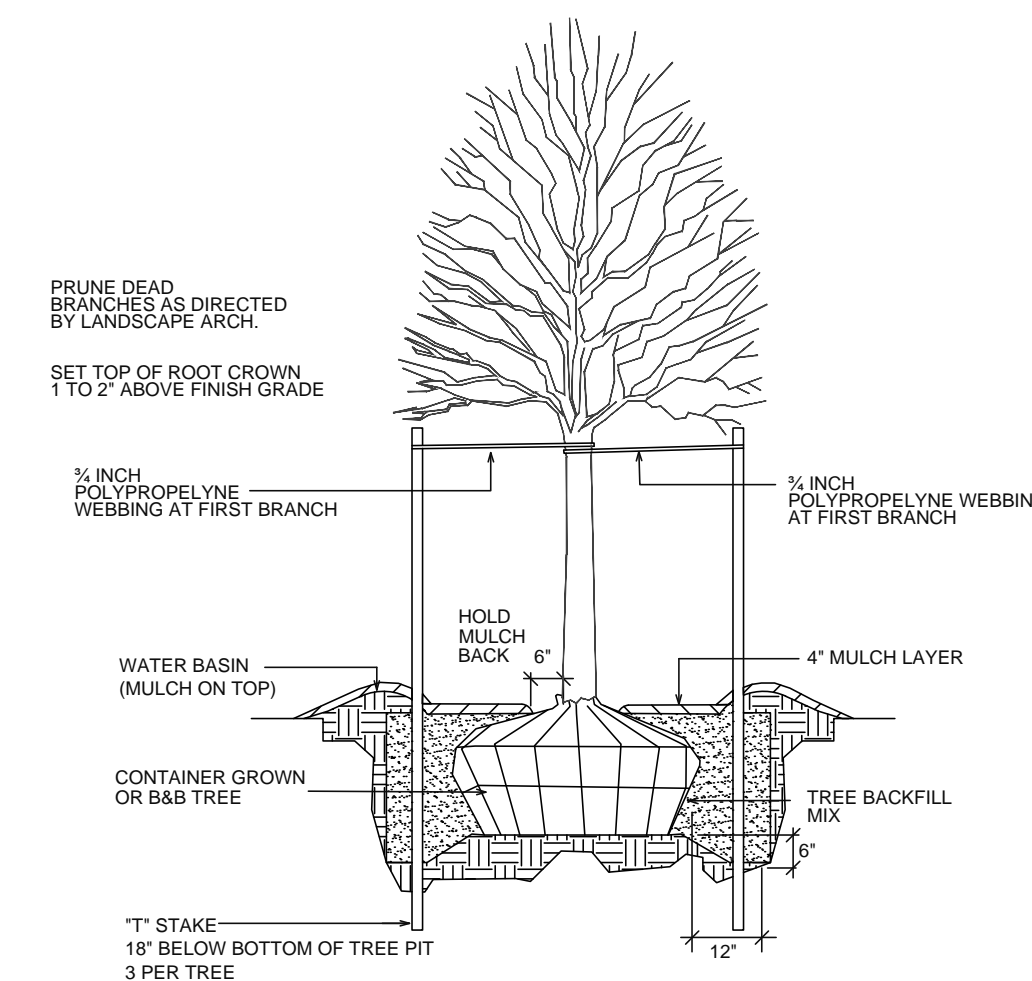
The Contractor shall verify water restrictions within the City of McKinney at time of planting. Should water restrictions not allow hydromulch, hydroseeding, or sprigging (Stage 3 and Stage 4 water restrictions), an approved alternative for grassing shall be installed.

PLANT LIST

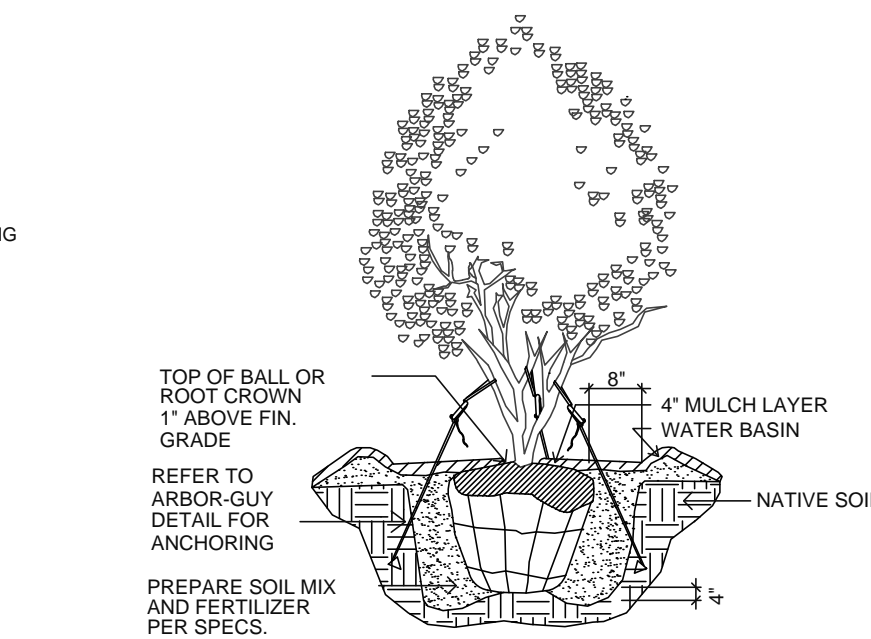
CANOPY TREES			
12	LE	Lacebark Elm	Ulmus parvifolia 4" cal. B&B 12' ht. 5' spread
13	LO	Live Oak	Quercus virginiana 4" cal. B&B 12' ht. 5' spread
15	SO	Shumard Oak	Quercus shumardii 4" cal. B&B 12' ht. 5' spread
8	CO	Chinquapin Oak	Quercus muhlenbergii 4" cal. B&B 12' ht. 5' spread
SHRUBS & GROUNDCOVERS			
17	NR	Nellie R. Stevens Holly	Ilex 'Nellie R. Stevens' 10 gal. 36" oc
6	CZ	Cenizo	Leucophyllum frutescens 5 gal. 36" oc
15	WM	Dwarf Wax Myrtle	Myrica pusilla 5 gal. 36" oc
67	DB	Dwarf Burford Holly	Ilex cornuta 'Burfordii' nana 5 gal. 36" oc

City of McKinney, Texas
LANDSCAPE CALCULATIONS

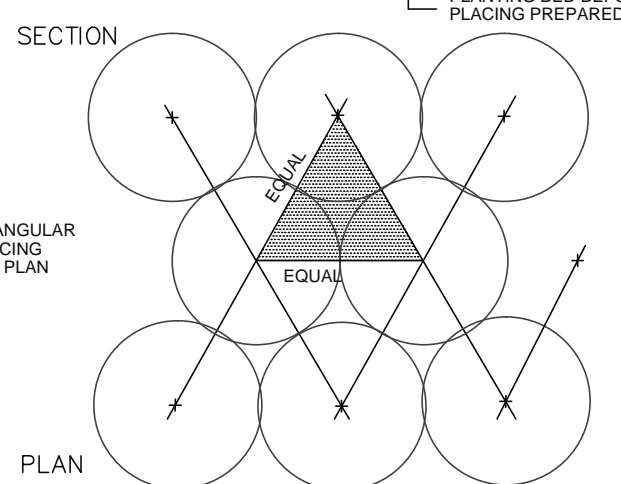
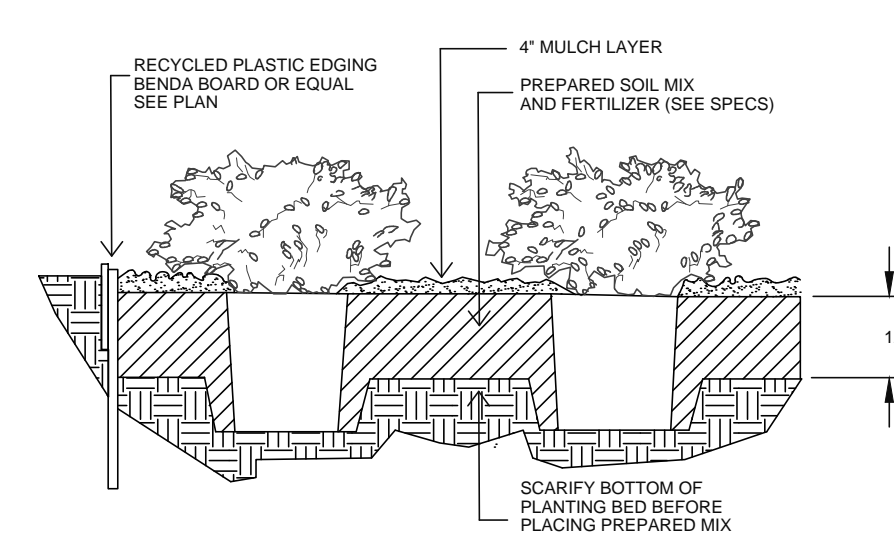
Total Lot Area	142,492 SF		
Required Landscape Area 10%	14,249 SF	35,237 SF	(25%)
HWY 380 30 foot wide Land Buffer	291 LF		
1 canopy tree per 40 LF	8 trees	8 trees	
Parking Lot Landscape	127 spaces		
1 tree within 65 LF of every space		yes	
1 tree per 10 spaces	13 trees	22 trees	
screening shrubs along 75% of parking facing a street		yes	
ev. shrubs around dumpster enclosure		10 gallon	



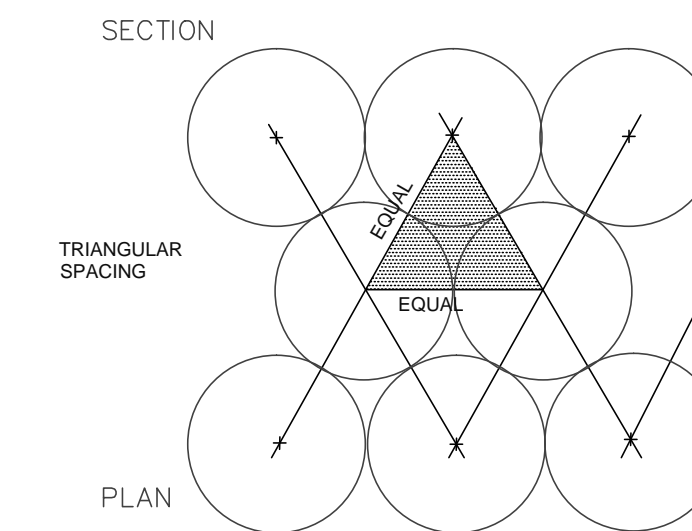
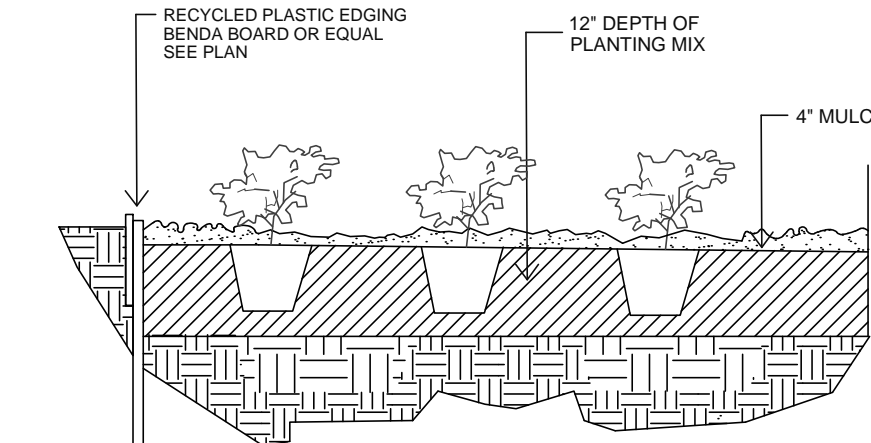
1 CANOPY TREE PLANTING
SCALE: NONE



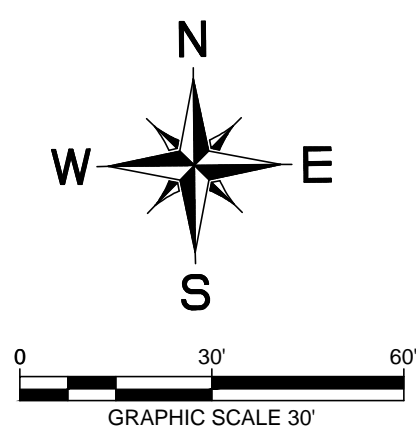
2 MULTI-TRUNK PLANTING
SCALE: NONE



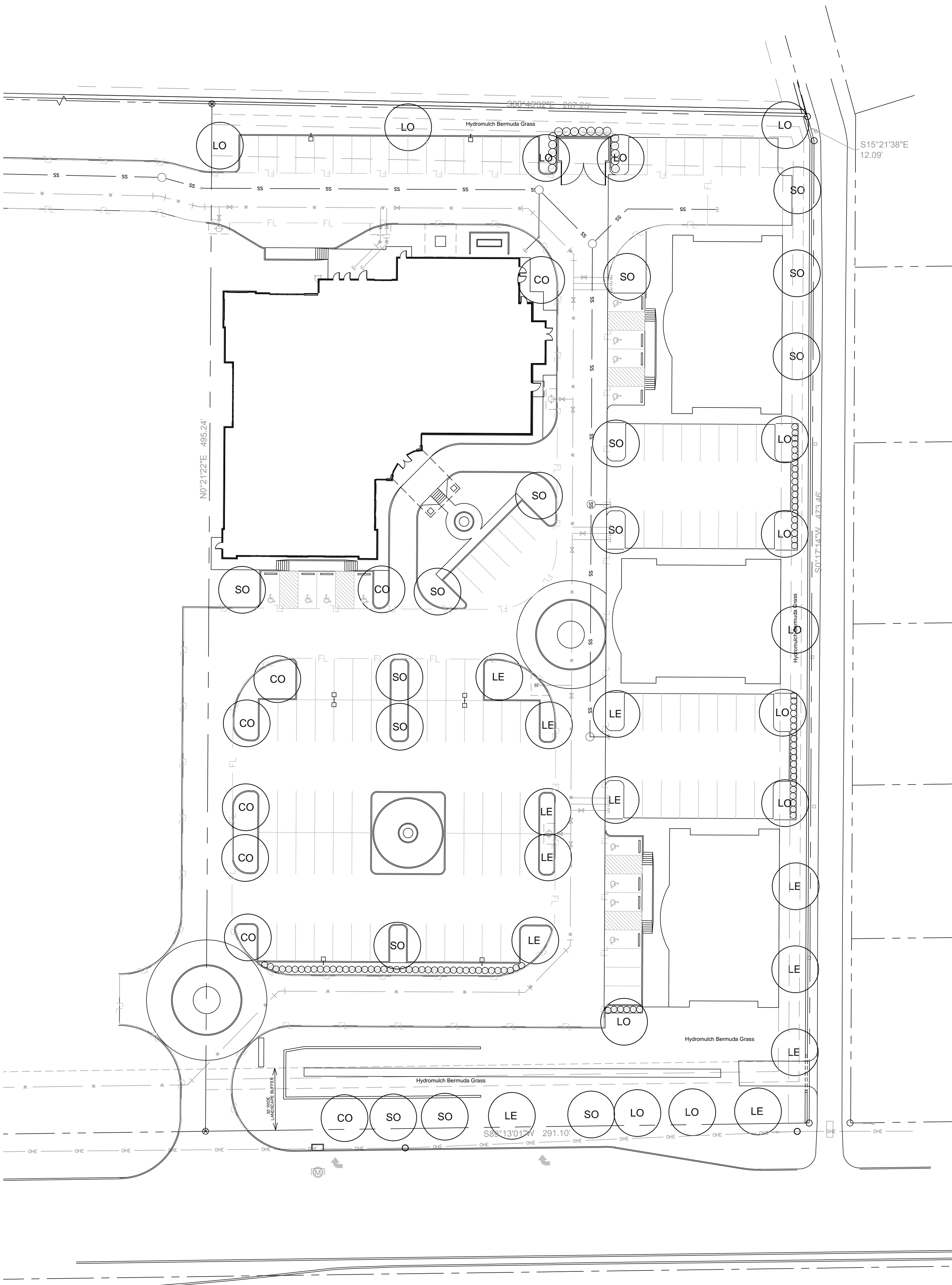
3 SHRUB PLANTING
SCALE: NONE



4 GROUNDCOVER PLANTING
SCALE: NONE



Benchmark
City of McKinney CM 17, being 13 feet South of the South Right-Of-Way line of U.S. Highway 380, at the Southeast corner of the intersection of Tarade Day and U.S. Highway No. 380, at a storm drain.
Elevation = 607.847'



SCOTT LILWILER
4/15/2014 11:07 AM
J:\AUTOCAD_LRO\MCKINNEY\SKYLINE\LS.DWG
LAST SAVED: 4/15/2014 11:06 AM

RECEIVED
By Planning Department at 9:21 am, Apr 16, 2014