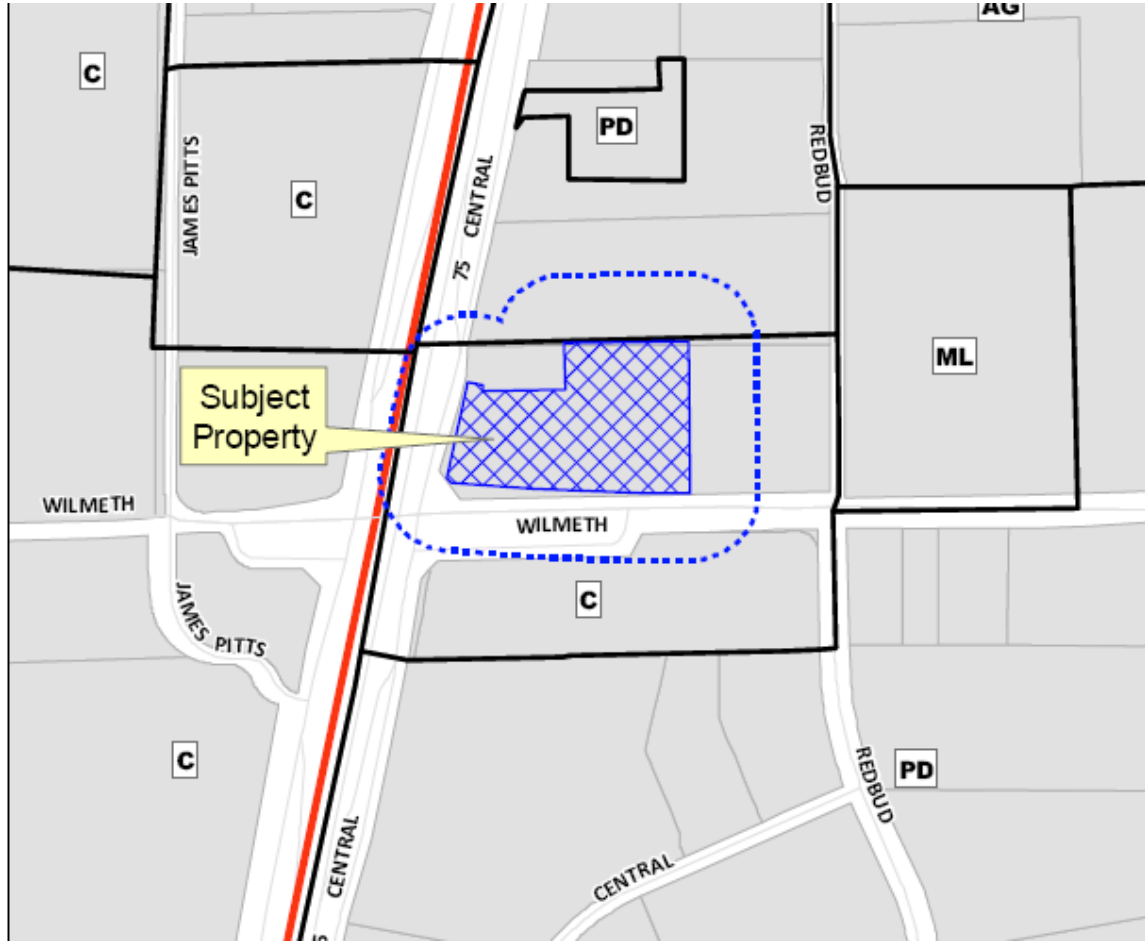


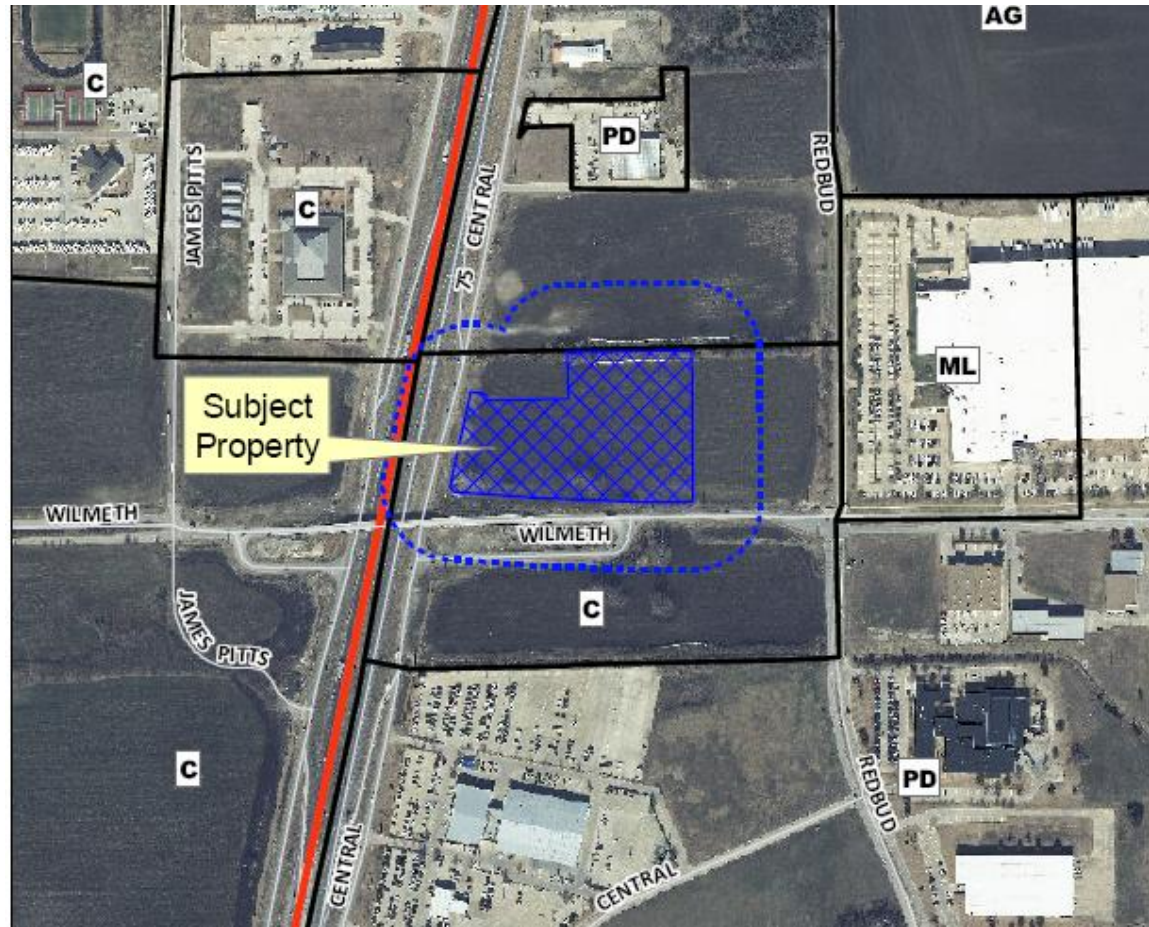
# Case No. 12-011Z

Request to Rezone Approximately 7.48 Acres from “C” – Planned Center District and “CC” – Corridor Commercial Overlay District to “PD” – Planned Development District and “CC” – Corridor Commercial Overlay District, Generally to Modify the Development Standards, Located on the Northeast Corner of Wilmeth Road and U.S. Highway 75 (Central Expressway).

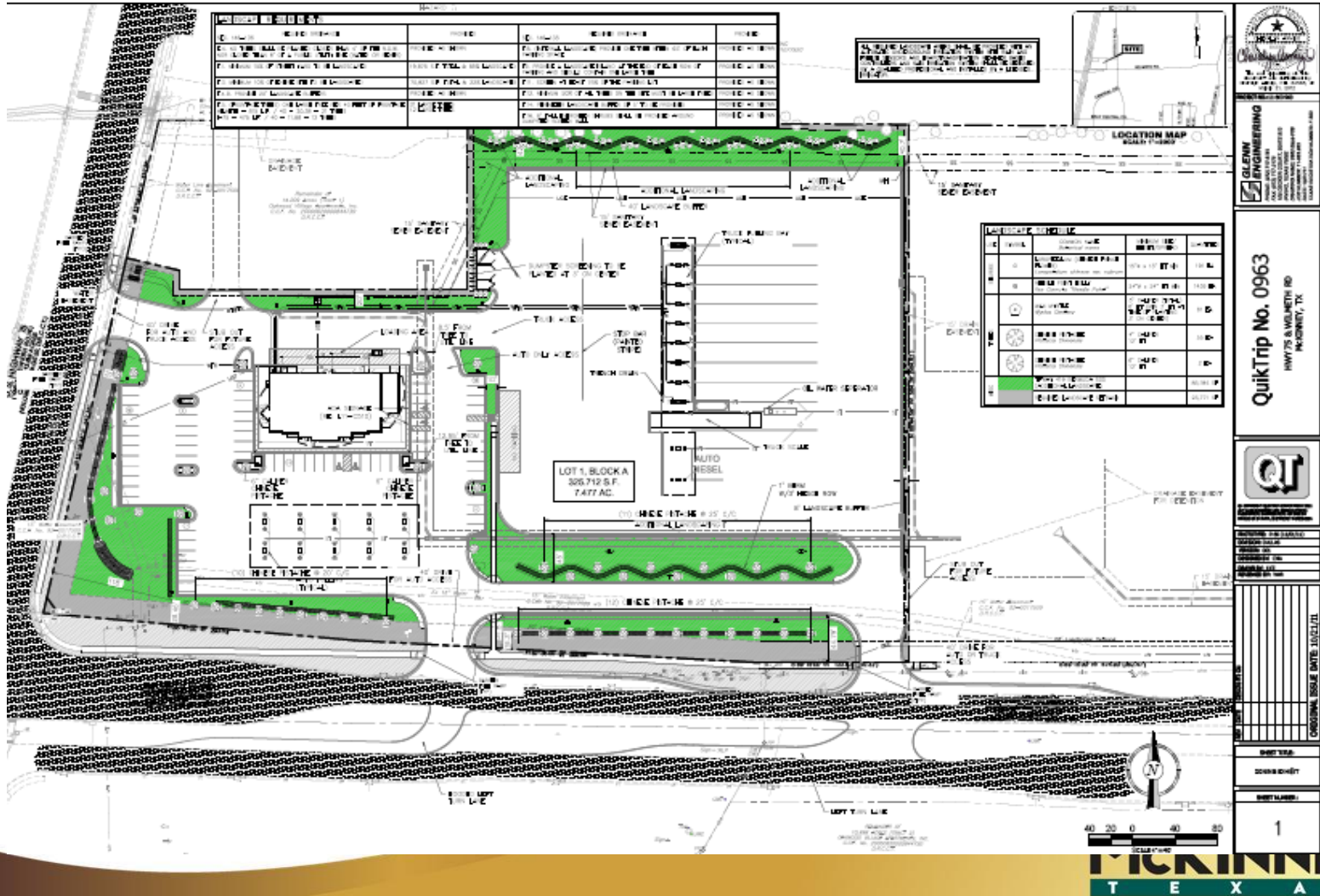
# Location Map



# Aerial Exhibit



# Zoning Exhibit



# Staff Recommendation

- Staff recommends denial of the rezoning request due to a lack of conformance with the City of McKinney's Comprehensive Plan.