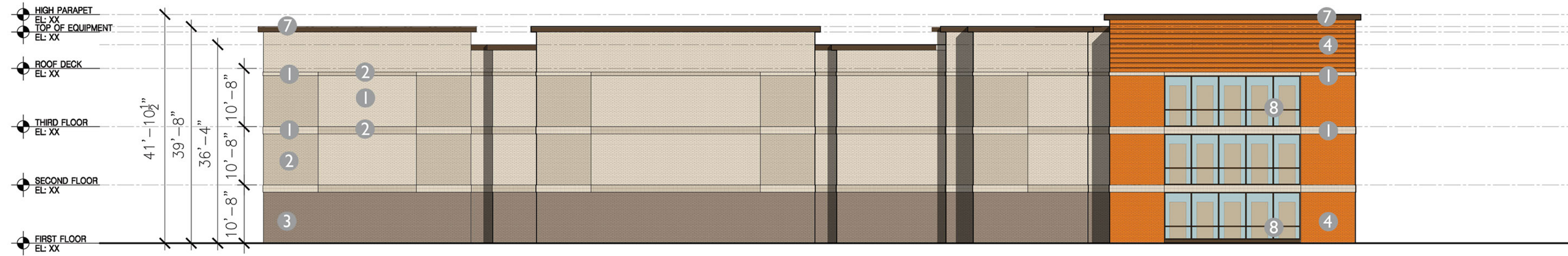
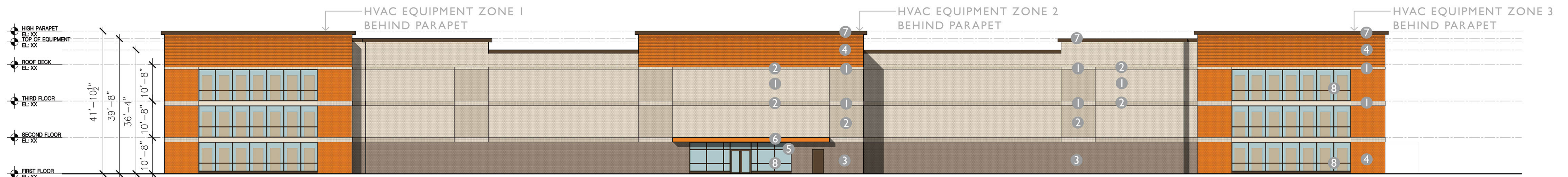


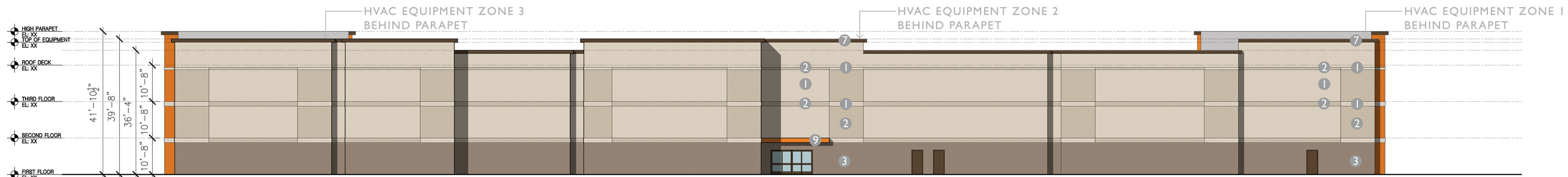
**NORTH ELEVATION** 7,960 SF FACADE  
1,312 SF ORANGE (16%)



**SOUTH ELEVATION** 7,925 SF FACADE  
989 SF ORANGE (12%)



**EAST ELEVATION** 14,257 SF FACADE  
2,861 SF ORANGE (20%)



**WEST ELEVATION** 13,997 SF FACADE  
253 SF ORANGE (2%)

**NOTES:**

25 SF SIGN ALLOWED ON NORTH AND SOUTH FACADE,  
531 SF SIGN ALLOWED ON EAST FACADE.

CC OVERLAY AND BASE ZONING ALLOW FOR  
55' AND 3 STORIES.

100% BRICK MASONRY REQUIRED PER MINI-WAREHOUSE  
SUP REQUIREMENTS.

BASE ZONING ALLOWS FOR 20% BRIGHT, PURE TONE  
PRIMARY OR SECONDARY COLORS (PS ORANGE).

EVERY 50' IN HORIZONTAL LENGTH NEEDS 2 OFFSETS OF  
AT LEAST 18" IN DEPTH.

MECHANICAL EQUIPMENT TO BE LOCATED BEHIND HIGH  
PARAPETS (PARAPETS MUST ALSO CHANGE HEIGHTS AND  
FEATURE A WELL DEFINED CORNICE PER ZONING).

**MATERIALS LEGEND**

1. ACME GLACIER WHITE BRICK (FIELD)
2. ACME DRIFTWOOD BRICK (ACCENT)
3. ACME MUSHROOM BROWN BRICK (BASE)
4. ACME CLAY MASONRY BRICK PAINTED PANTONE PMS 1665 C (ACCENT)
5. SPANDREL GLAZING
6. PS ORNAGE AWNING
7. DARK BRONZE METAL CAP
8. DARK BRONZE STOREFRONT-LOW REFLECTIVITY LEVEL GLAZING (11%)

**PUBLIC STORAGE - MCKINNEY**

mckinney, texas  
maa.2017007

03.06.2017

