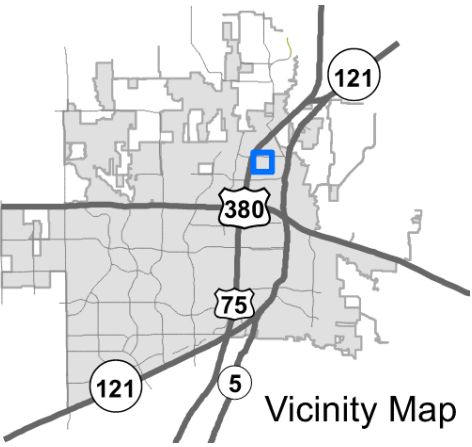
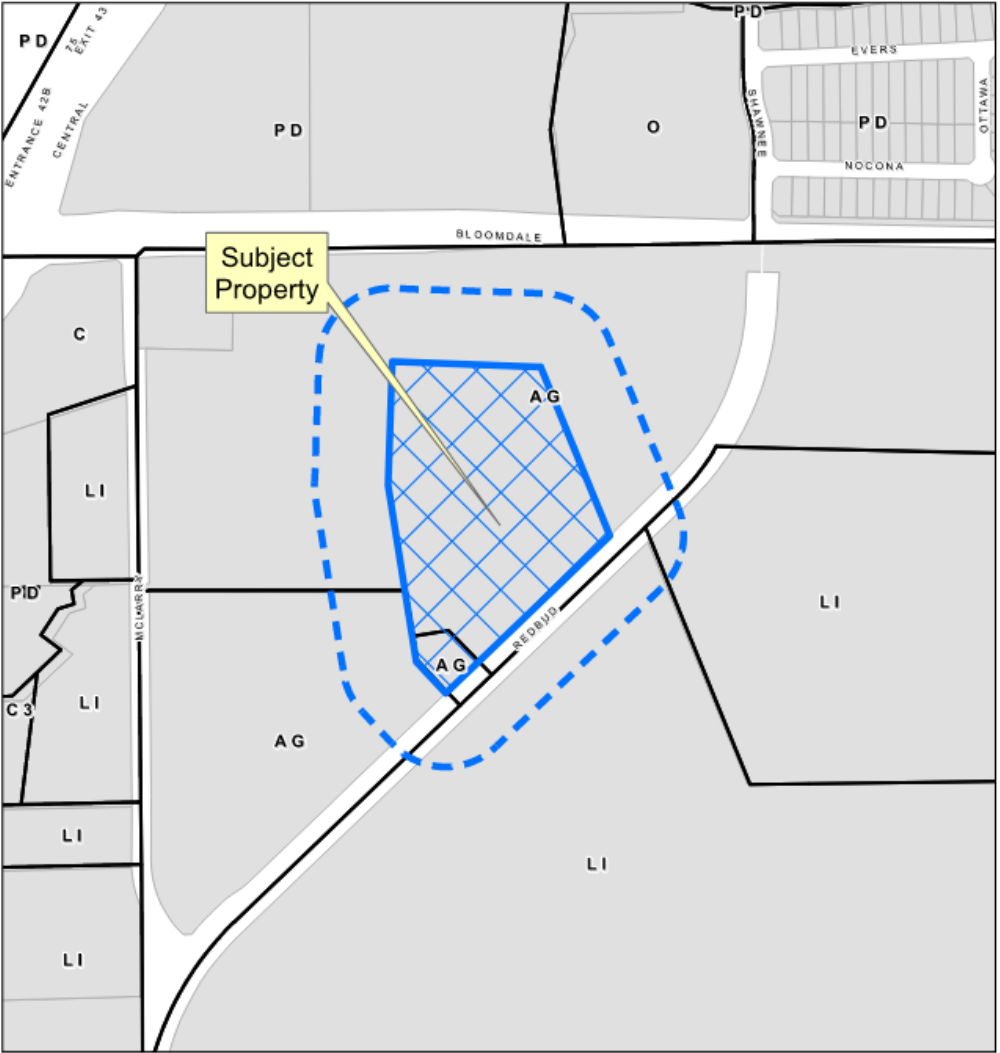


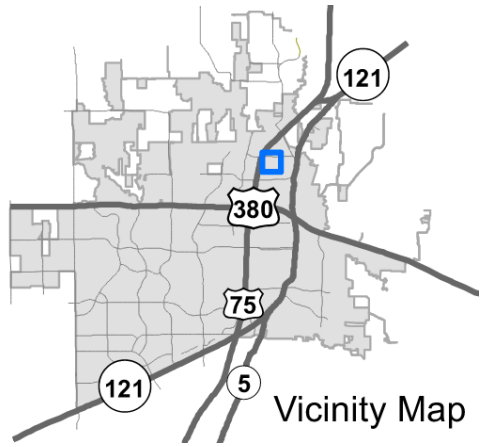
# North Texas Municipal Water District Pump Station SUP

22-0009SUP

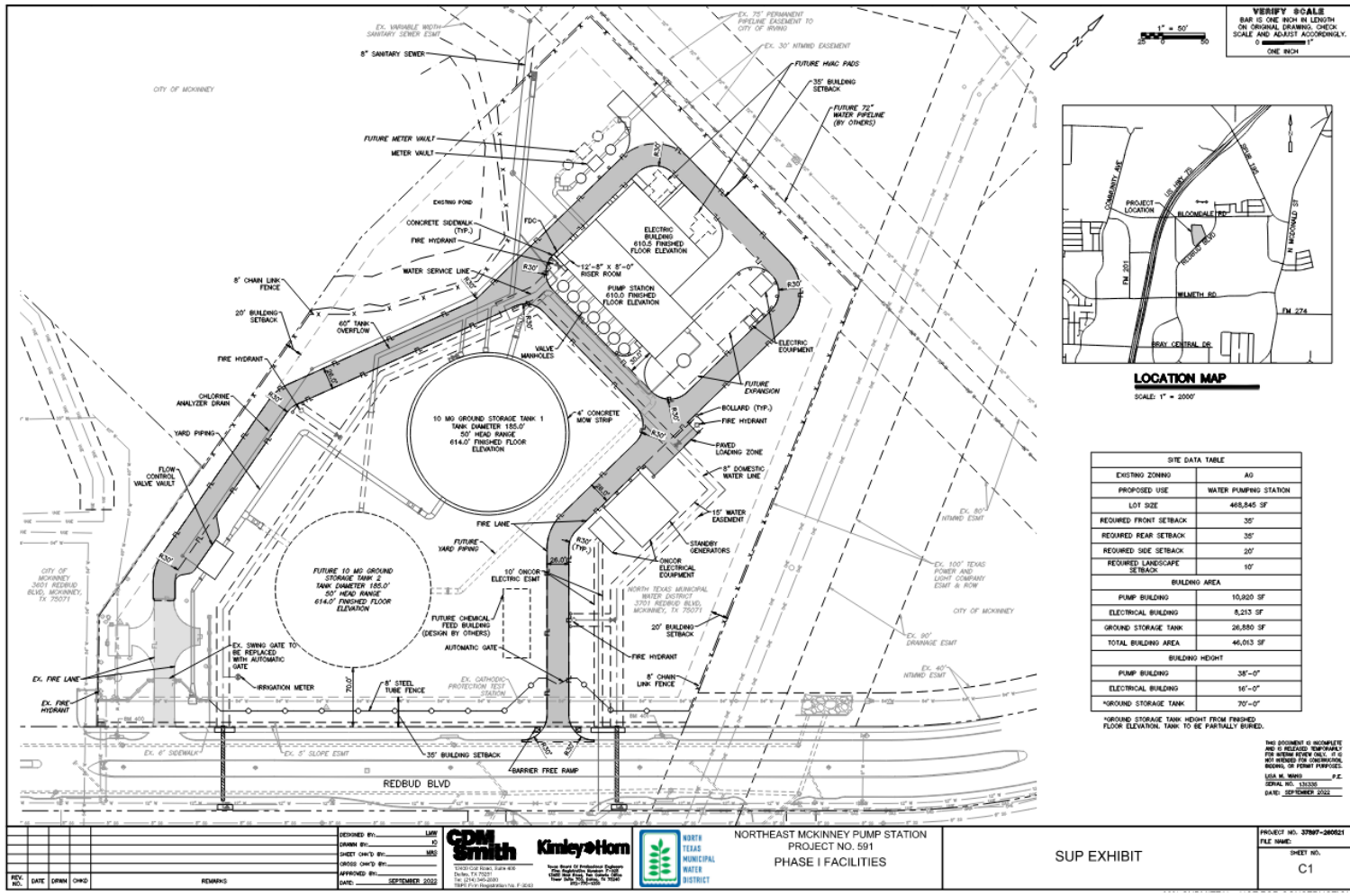
# Location Map



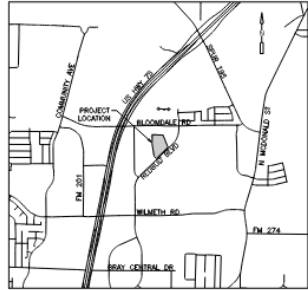
# Aerial Exhibit



# Proposed SUP Exhibit



**VERIFY SCALE**  
 BAR IS ONE INCH IN LENGTH  
 ON ORIGINAL DRAWING. CHECK  
 SCALE AND ADJUST ACCORDINGLY.  
 1" = 2000'



**LOCATION MAP**  
 SCALE: 1" = 2000'

SITE DATA TABLE	
EXISTING ZONING	A0
PROPOSED USE	WATER PUMPING STATION
LOT SIZE	408,846 SF
REQUIRED FRONT SETBACK	35'
REQUIRED REAR SETBACK	35'
REQUIRED SIDE SETBACK	20'
REQUIRED LANDSCAPE SETBACK	10'
BUILDING AREA	
PUMP BUILDING	10,920 SF
ELECTRICAL BUILDING	8,213 SF
GROUND STORAGE TANK	26,880 SF
TOTAL BUILDING AREA	46,013 SF
BUILDING HEIGHT	
PUMP BUILDING	38'-0"
ELECTRICAL BUILDING	16'-0"
GROUND STORAGE TANK	70'-0"

\*GROUND STORAGE TANK HEIGHT FROM FINISHED FLOOR ELEVATION. TANK TO BE PARTIALLY BURIED.

THIS DOCUMENT IS INCOMPLETE AND IS RELEASED FOR YOUR REVIEW ONLY. IT IS NOT BEING USED FOR CONSTRUCTION. U.S.A. # 9003 P.E. SERIAL NO. 13320 DATE: SEP 2008 2002

REV. NO.	DATE	DRWN	CHKD	REMARKS

DESIGNED BY: LHM  
 DRAWN BY: JC  
 SHEET CHECKED BY: MDR  
 CHECKED BY: MDR  
 APPROVED BY: MDR  
 DATE: SEPTEMBER 2008

**CDM Smith**  
 10000 North Central Expressway  
 Suite 1000  
 Dallas, TX 75203  
 (214) 343-7000  
 FAX: (214) 343-7001  
 WWW.CDM-SMITH.COM

**Kinley's Home**  
 10000 North Central Expressway  
 Suite 1000  
 Dallas, TX 75203  
 (214) 343-7000  
 FAX: (214) 343-7001  
 WWW.KINLEYSHOME.COM

NORTHEAST MCKINNEY PUMP STATION  
 PROJECT NO. 591  
 PHASE I FACILITIES

SUP EXHIBIT

PROJECT NO. 37897-280521  
 FILE NAME:  
 SHEET NO.  
 C1



