

# NORTH FACING FACADE

---





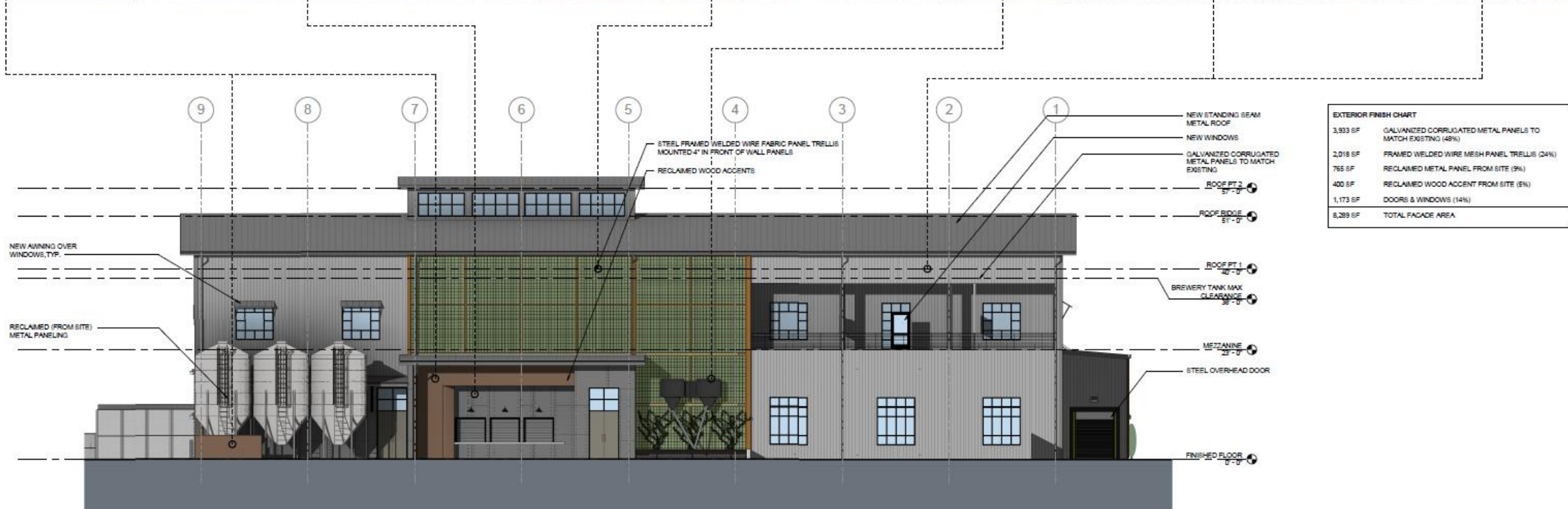
# NORTH FACING FACADE

---





# CORE OFFERINGS



EXTERIOR FINISH CHART	
3,933 SF	GALVANIZED CORRUGATED METAL PANELS TO MATCH EXISTING (48%)
2,018 SF	FRAMED WELDED WIRE MESH PANEL TRELLIS (24%)
765 SF	RECLAIMED METAL PANEL FROM SITE (9%)
400 SF	RECLAIMED WOOD ACCENT FROM SITE (5%)
1,173 SF	DOORS & WINDOWS (14%)
8,289 SF	TOTAL FACADE AREA

- 5.5% ABV



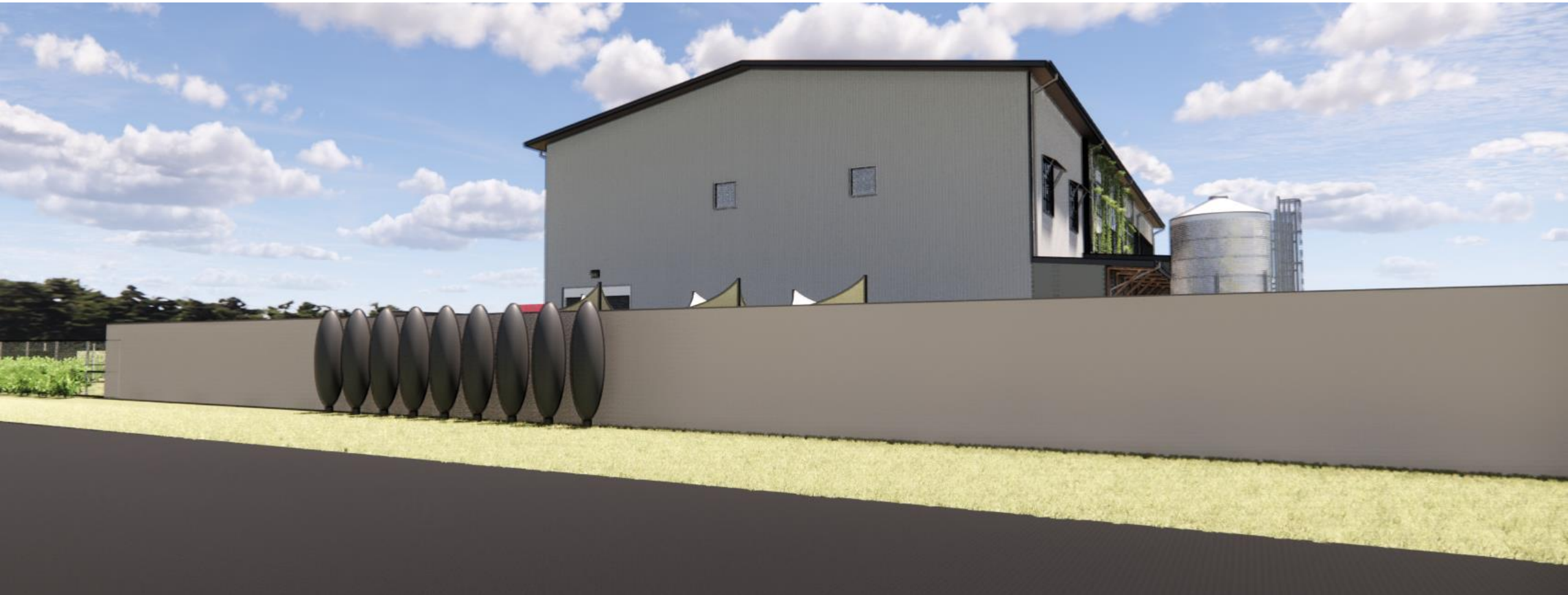
# EAST FACING FACADE

---



# EAST FACING FACADE

---



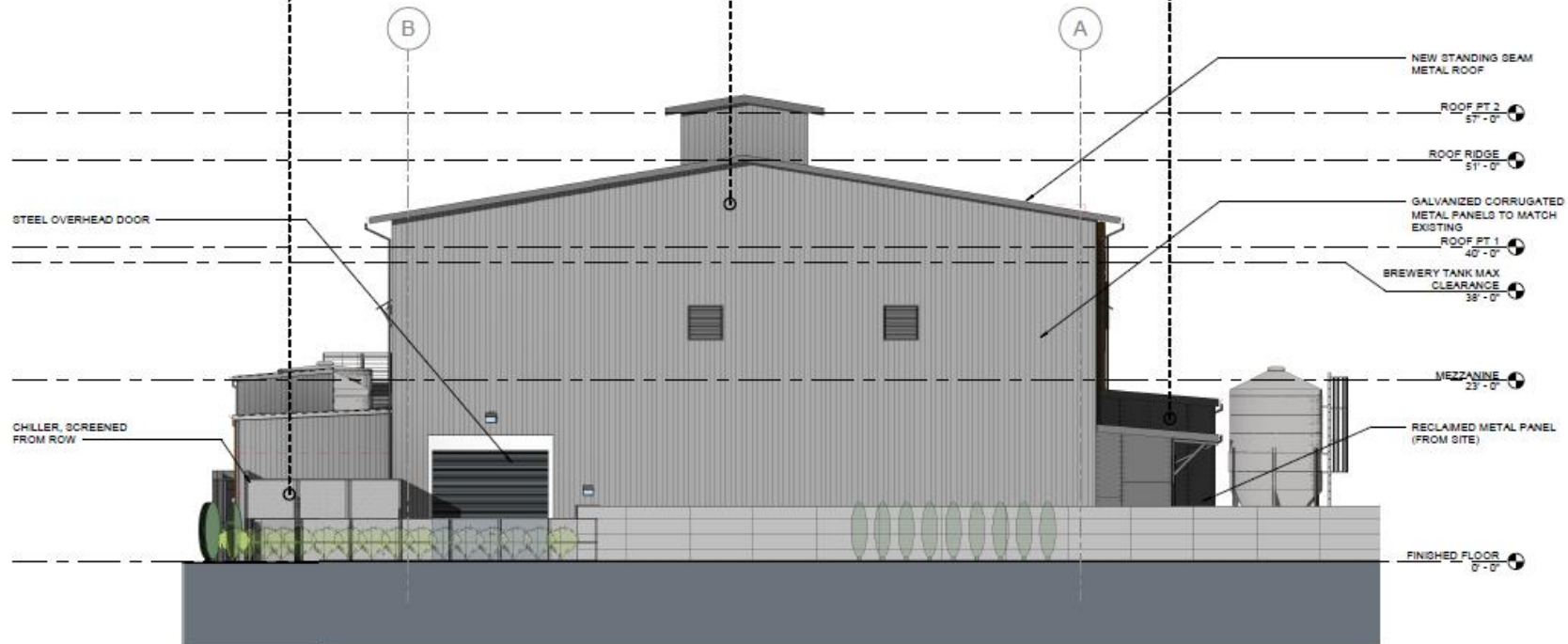


# EAST FACING FACADE

---



# EAST FACING FACADE



EXTERIOR FINISH CHART	
3,913 SF	GALVANIZED CORRUGATED METAL PANELS TO MATCH EXISTING (86%)
296 SF	RECLAIMED METAL PANEL FROM SITE (6%)
320 SF	DOORS & WINDOWS(8%)
4,529 SF	TOTAL FACADE AREA



# EAST FACING FACADE

---





# SOUTH FACING FACADE

---





# SOUTH FACING FACADE

---





# SOUTH FACING FACADE

---





# CORE OFFERINGS

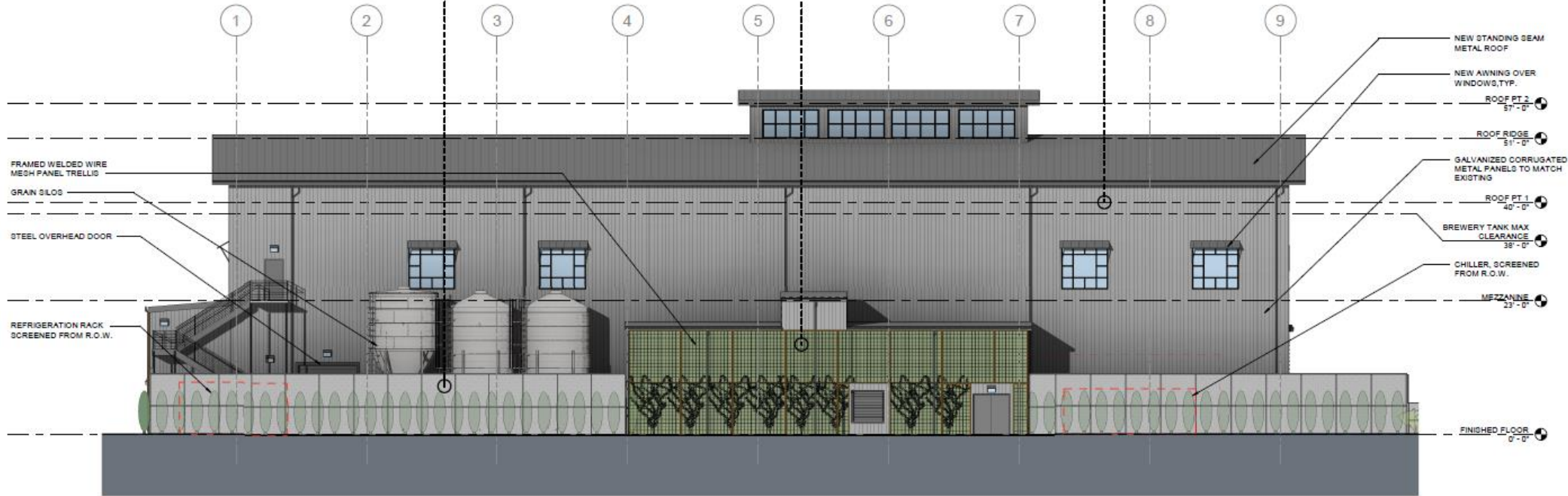
---



- 5.5% ABV



# SOUTH FACING FACADE



EXTERIOR FINISH CHART	
6,482 SF	GALVANIZED CORRUGATED METAL PANELS TO MATCH EXISTING (78%)
1,103 SF	FRAMED WELDED WIRE MESH PANEL TRELLIS (13%)
704 SF	DOORS & WINDOWS(9%)
8,289 SF	TOTAL FACADE AREA

**1** SOUTH ELEVATION - FACADE PLAN  
3/32" = 1'-0"



# WEST FACING FACADE

---





# NORTH FACING FACADE

---





# INTEGRATE INTO THE SITE

---





# INTEGRATE INTO THE SITE

---





# INTEGRATE INTO THE SITE

---

