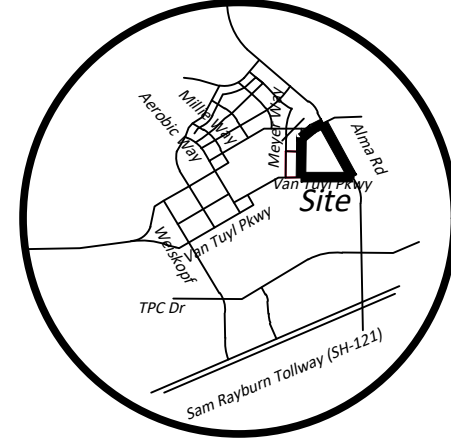
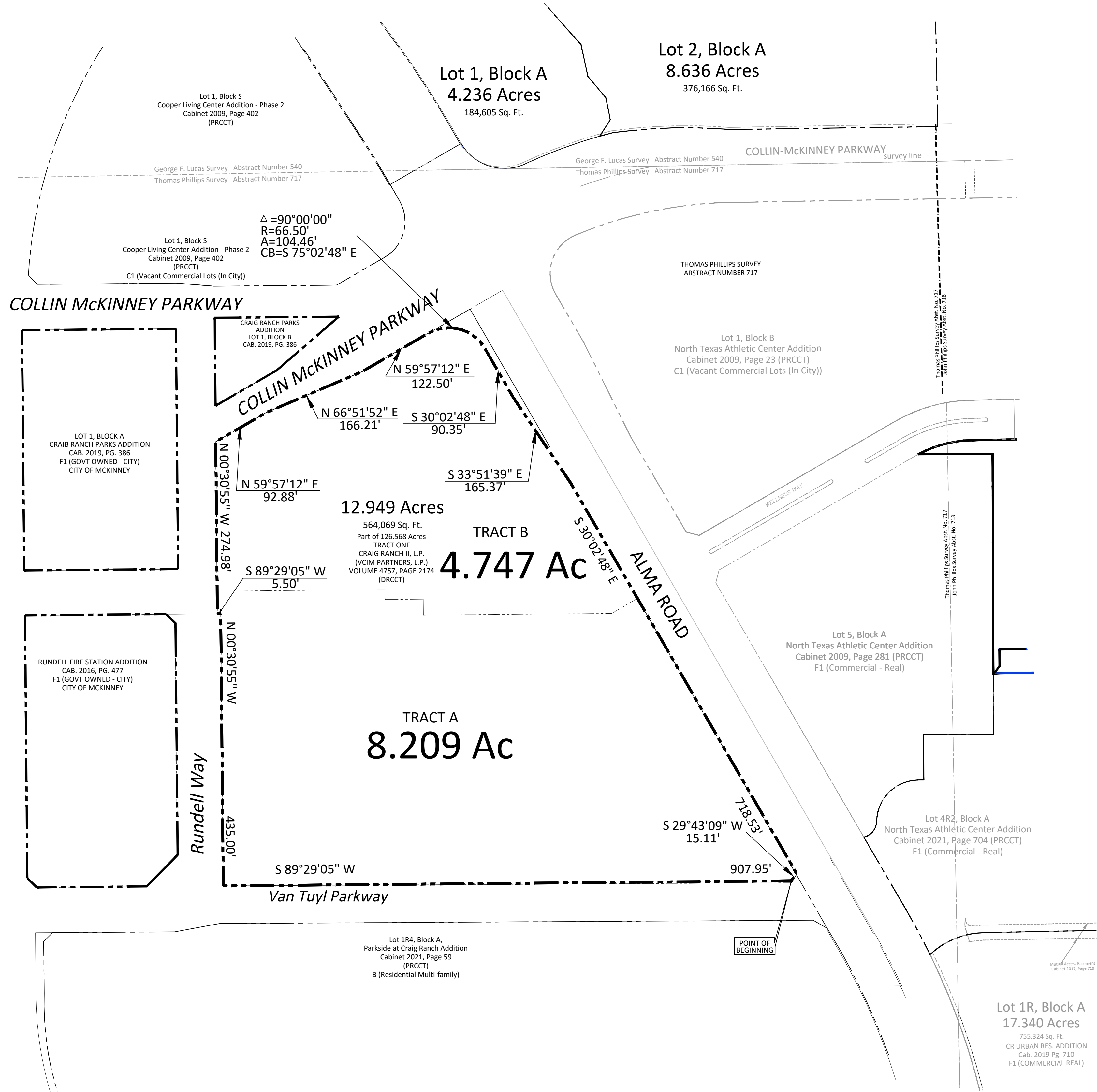


Vicinity Map
(Not to Scale)



0' 50' 100' 200'
Scale: 1" = 100'



FIELD NOTE DESCRIPTION
12.949 ACRES

BEING a 12.949 acre tract of land situated in the Thomas Phillips Survey, Abstract Number 717 in the City of McKinney, Collin County, Texas and being a part of a 126.568 acre tract of land (Tract One) to Craig Ranch II, L.P. and VCIM PARTNERS, L.P. recorded in Volume 4757, Page 2174 of the Official Public Records of Collin County, Texas and being more particularly described as follows:

BEGINNING at a 5/8 inch iron rod found at the intersection of the southwest line of Alma Road (120' wide at this point) with the northeast corner of a corner cut-off line in the north line of Van Tuyl Parkway (60' wide);

THENCE along the north line of said Van Tuyl Parkway with said corner cut-off line, **SOUTH 29°43'09" EAST** a distance of 15.11 feet to a 5/8 inch iron rod found for corner;

THENCE continuing with the north line of said Van Tuyl Parkway, **SOUTH 89°29'05" WEST** a distance of 907.95 feet to a 5/8 inch iron rod set at the intersection of the east line of Rundell Way (73' wide at this point);

THENCE departing the north line of Van Tuyl Parkway and following the northeast line of said Rundell Way, **NORTH 00°30'55" WEST** a distance of 435.00 feet to a 5/8 inch iron rod found for corner;

THENCE continuing with said east line, **SOUTH 89°29'05" WEST** a distance of 5.50 feet to a 5/8 inch iron rod found in the east line of said Rundell Way (being 62' wide at this point);

THENCE continuing with said east line, **NORTH 00°30'55" WEST** a distance of 274.98 feet to a 5/8 inch iron rod found at the intersection of the southeast line of Collin McKinney Parkway (variable width at this point);

THENCE along the southeast line of said Collin McKinney Parkway, **NORTH 59°57'12" EAST** a distance of 92.88 feet to a 5/8 inch iron rod found for corner;

THENCE continuing along the southeast line of said Collin McKinney Parkway, **NORTH 66°51'52" EAST** a distance of 166.21 feet to a 5/8 inch iron rod found for corner;

THENCE continuing along the southeast line of said Collin McKinney Parkway, **NORTH 59°57'12" EAST** a distance of 122.50 feet to a 5/8 inch iron rod found for corner and being the intersection of the southwest line of said Alma Road and being the beginning of a curve to the right having a radius of 66.50 feet and a chord bearing of South 75°02'48" East;

THENCE along the southwest line of said Alma Road with said curve to the right through a central angle of 90°00'00" for an arc length of 104.46 feet to a 5/8 inch iron rod found for corner;

THENCE continuing with the southwest line of Alma Road, **SOUTH 30°02'48" EAST** a distance of 90.35 feet to a 5/8 inch iron rod found for corner;

THENCE continuing with said southwest line, **SOUTH 33°51'39" EAST** a distance of 165.37 feet to a 5/8 inch iron rod found for corner;

THENCE continuing with said southwest line, **SOUTH 30°02'48" EAST** a distance of 718.53 feet to the **POINT OF BEGINNING**;

CONTAINING 12.949 acres or 564,069 square feet of land more or less.

ZONING EXHIBIT
12.949 ACRES

PARCEL A - 4.84 ACRES
PARCEL B - 8.11 ACRES

THOMAS PHILLIPS SURVEY, ABSTRACT NO. 717
CITY OF MCKINNEY
COLLIN COUNTY, TEXAS

Client: VCIM PARTNERS, LP

Scale: 1" = 100'	Checked By: F.R. Owens
Date: 03-25-2022	P.C.: Cryer/Spradling
Technician: Spradling/Bedford	File: SPARROW ZONING
Drawn By: Spradling/Bedford	Job No. 159-173
	GF No. 2018-357523-RU

301 N. Alamo Rd. • Rockwall, Texas 75087
(972) 722-0225, www.ajbedfordgroup.com ajb@ajbedfordgroup.com

Sheet:
1
Of: 1



\\MAIL FILES\CRAIG INTERNATIONAL\159\CRAIG RANCH\REMANDEUR EXHIBITS\PARCEL 3011349 ACRES\SPARROW ZONING 3-25-22.dwg, ZONING, 7/7/2022 10:04:35 AM