

Downtown Parking Committee
Recommendations
April 19, 2016



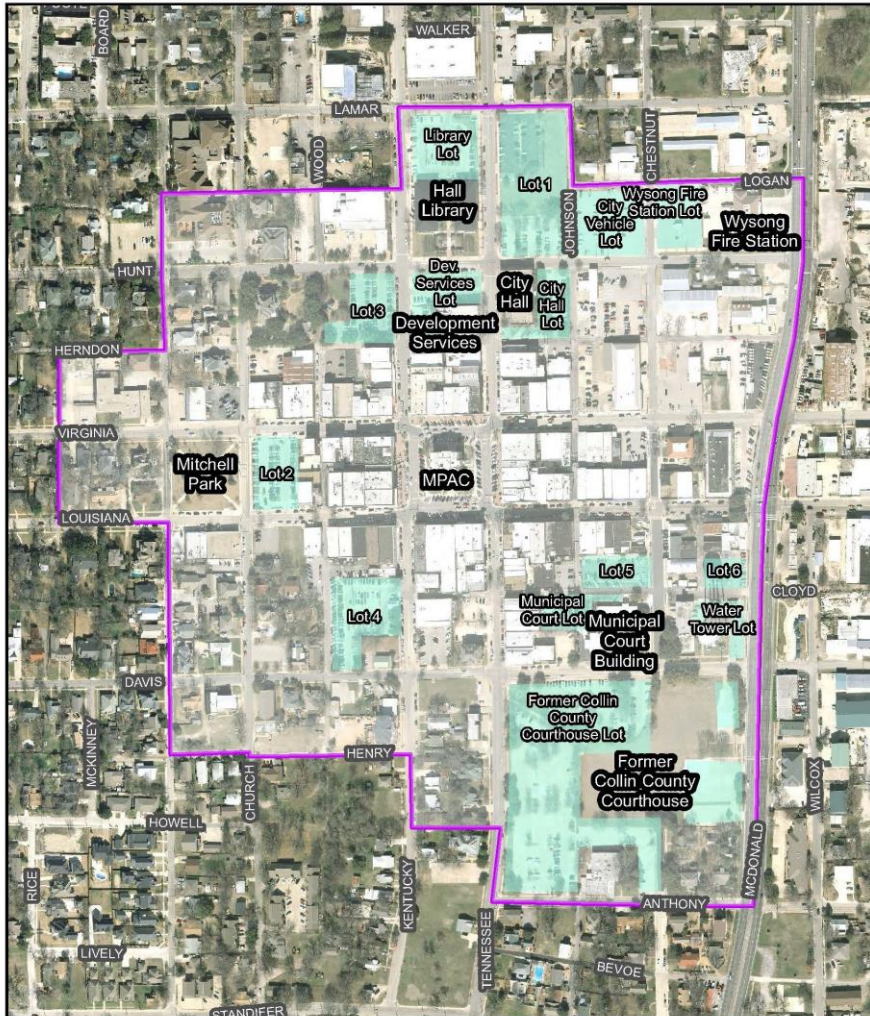
- MONEY MAGAZINE 2014 -

Downtown Parking Committee

- On February 22, 2016, City Council established the Downtown Parking Committee.
- The stated purpose of the committee is to discuss long term and short term solutions to parking related issues in downtown McKinney. Downtown McKinney was defined as the Historic Town Center District including, but not limited to areas impacted by the Town Center Study.
- City Council directed the committee to meet no less than once every two weeks in order to bring a recommendation forward to the City Council no later than at the May 16th Council work session.

2014 Parking Study Update

Figure 1 - Parking Study Area and Public Parking Lots



- Total Supply of Parking Spaces in Downtown McKinney – 2,576
- Public off-street spaces – 1,266
- Private off-street spaces – 853
- On-street spaces - 457

The “Nine-Acre” Site

Located on the southwest corner of Davis St. and McDonald St. (S.H. 5)

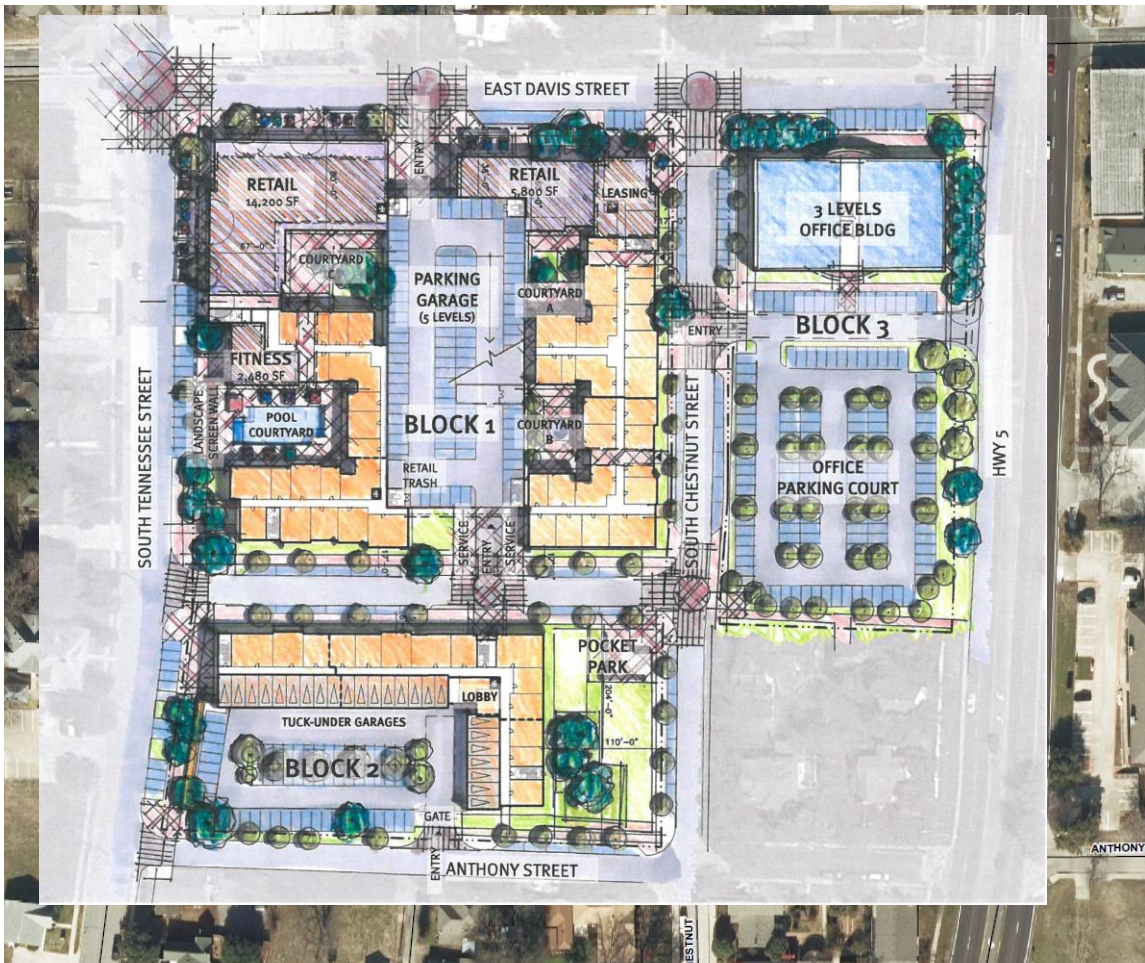


The project calls for:

- Private parking for multifamily residents (not included in totals below)
- 200 non-resident parking spaces (100 of which are to be owned by the City)
- 119 on-street public parking spaces
- 125 parking spaces (publicly available for nights and weekends)
- Total Public Parking Spaces Proposed: 444
- Existing Public Parking Spaces: 523

The “Nine-Acre” Site

Located on the southwest corner of Davis St. and McDonald St. (S.H. 5)



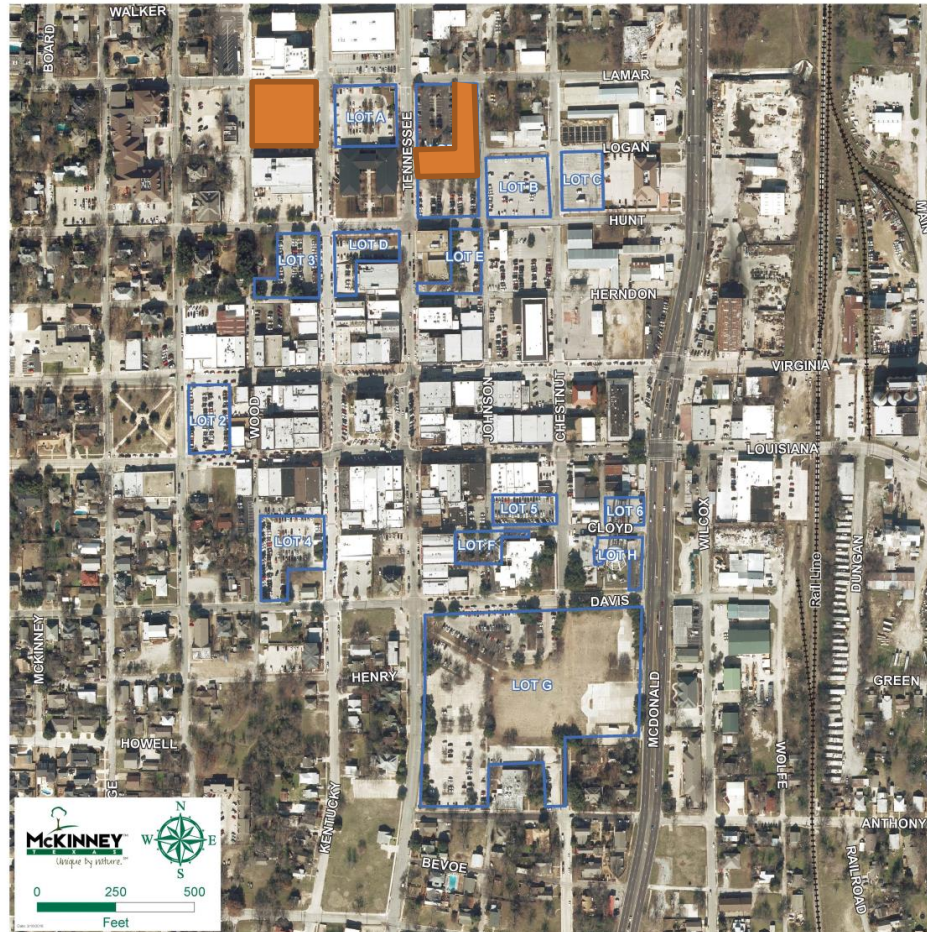
The project calls for:

- Private parking for multifamily residents (not included in totals below)
- 200 non-resident parking spaces (100 of which are to be owned by the City)
- 119 on-street public parking spaces
- 125 parking spaces (publicly available for nights and weekends)
- Total Public Parking Spaces Proposed: 444
- Existing Public Parking Spaces: 523

Parking Committee Recommendations

- Design and construct surface parking on the following downtown properties:
 - The First United Methodist Church lot on the southwest corner of Kentucky Street and Lamar Street, and
 - The old Wysong Hospital Lot located immediately north of City Hall on the northeast corner of Tennessee Street and Hunt Street.
- Improve wayfinding in and around downtown by providing additional parking lot identification and directional signage.
 - Improved wayfinding will also include a re-numbering of public parking lots.
- Improve lighting of downtown parking lots and sidewalks where needed.
 - Consider up-lighting heavily landscaped areas to prevent dark spaces
 - Consider security cameras in public spaces
- Utilize parking apps for mobile devices

Additional Parking

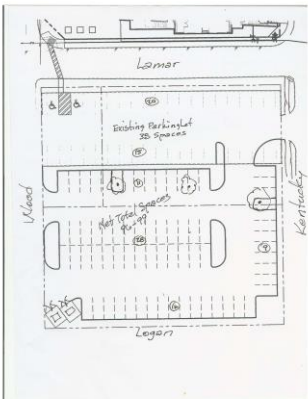


First United Methodist Lot

(SW Corner of Lamar and Kentucky)



- The committee recommends the following:
 - Negotiate a long term lease of the property
 - Design a surface parking lot to maximize the number of spaces (about 96 spaces)
 - Construct a permanent concrete surface parking lot (contract will require City Council approval)
 - Include lighting and public parking identification signage



Wysong Lot

(SW Corner of Lamar and Kentucky)

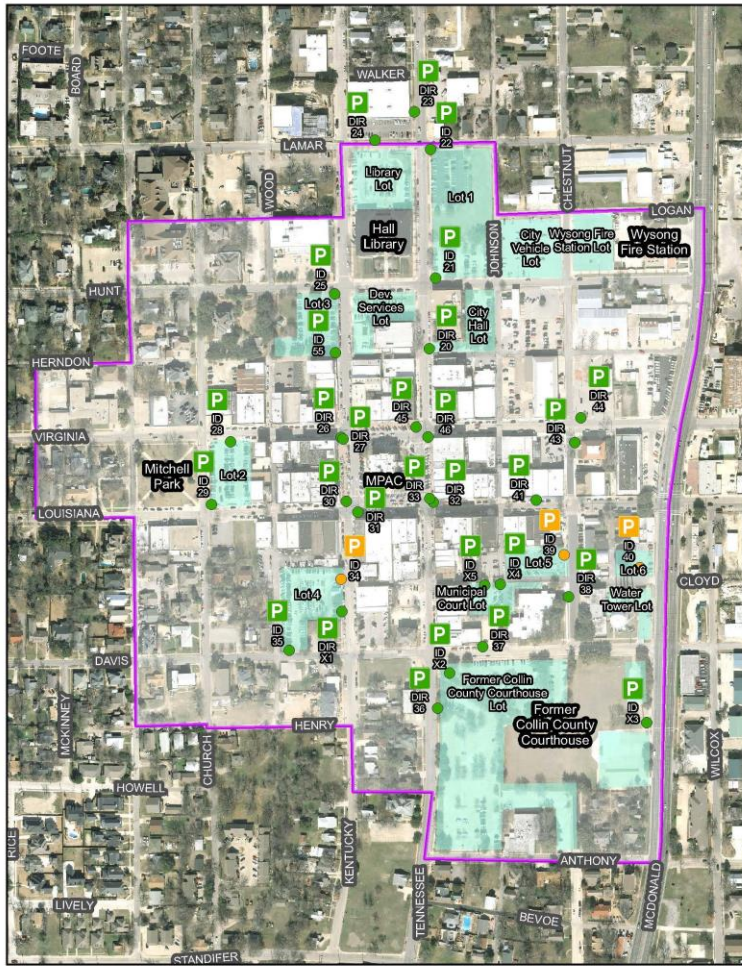


- The committee recommends the following:
 - Design a surface parking lot to maximize the number of spaces (about 106 additional spaces)
 - Determine the best process (total reconstruction or only construct new spaces) and materials for this property
 - Construct additional parking spaces (contract will require City Council approval)
 - Include lighting and public parking identification signage



Wayfinding Signs

Figure 9 - Parking Wayfinding Sign Map



	Parking Sign Present		Directional Sign		Typical Sign Number
	Parking Sign Not Present		Identification Sign		Undocumented Sign Number

- The committee recommends the following:
 - All public parking lots be numbered in a uniform manner to avoid confusion.
 - Additional public parking lot identification signs be installed to clearly designate public parking
 - Additional directional signs be installed to clearly direct traffic to available lots



Lighting



- The committee recommends the following:
 - Lighting of all public parking lots and routes to those lots from the square be studied to ensure proper lighting levels.

Summary

- The recommendations of the Downtown Parking Committee are intended to:
 - Maximize utilization of existing public parking through wayfinding and lighting
 - Increase the number of public parking spaces in the short term to offset the reduction of public spaces during the construction of the 9-acre site.
- The committee will continue to meet to discuss additional short term strategies as well as to prepare recommendations for long term strategies to address parking needs as downtown McKinney continues to grow.

Questions

