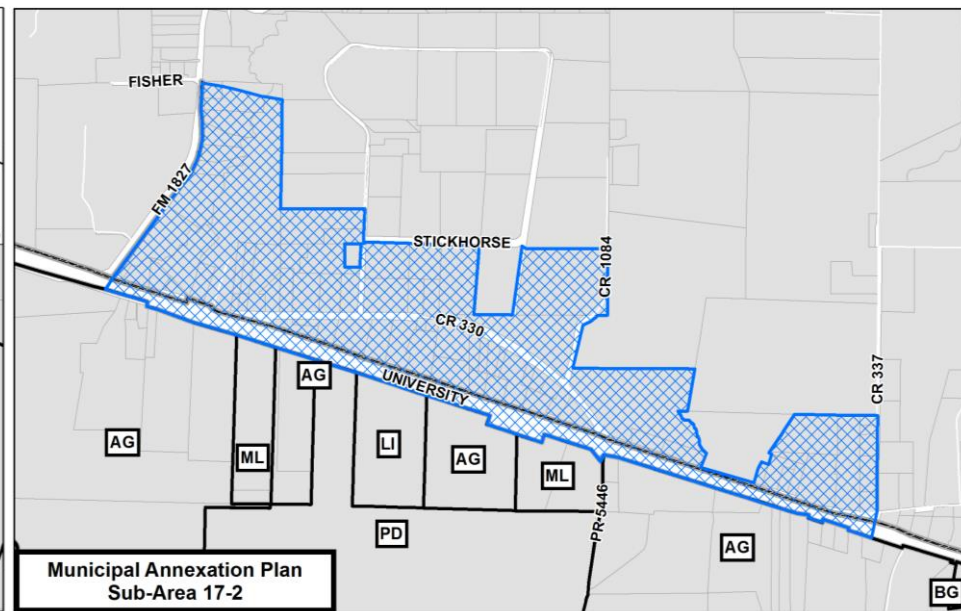
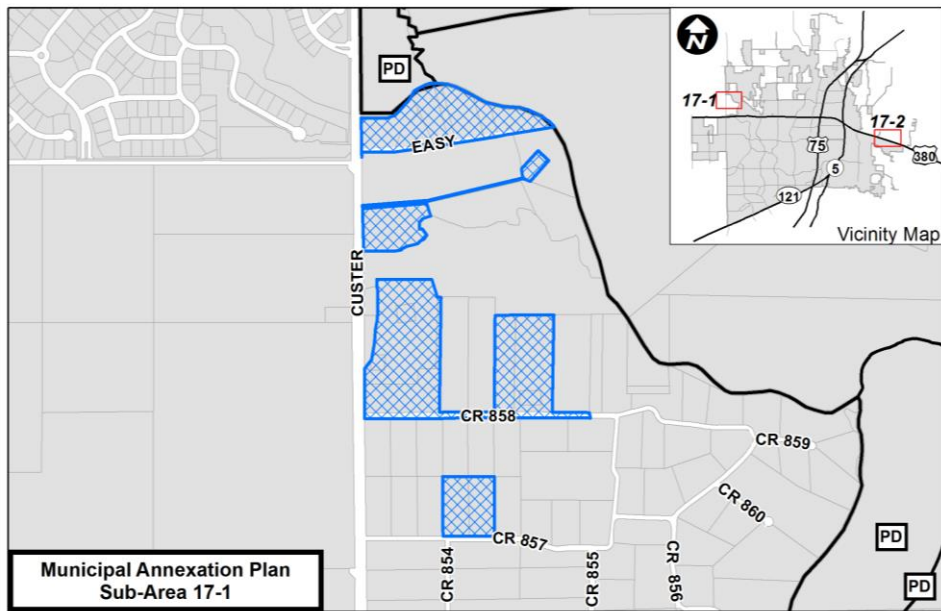


Proposed Annexation of Areas Identified in 2017 Municipal Annexation Plan

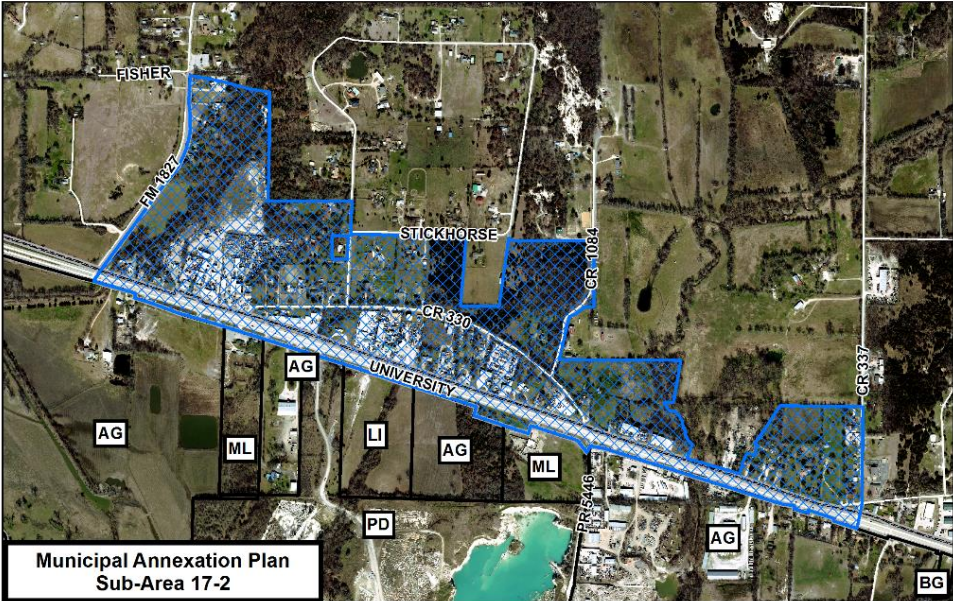
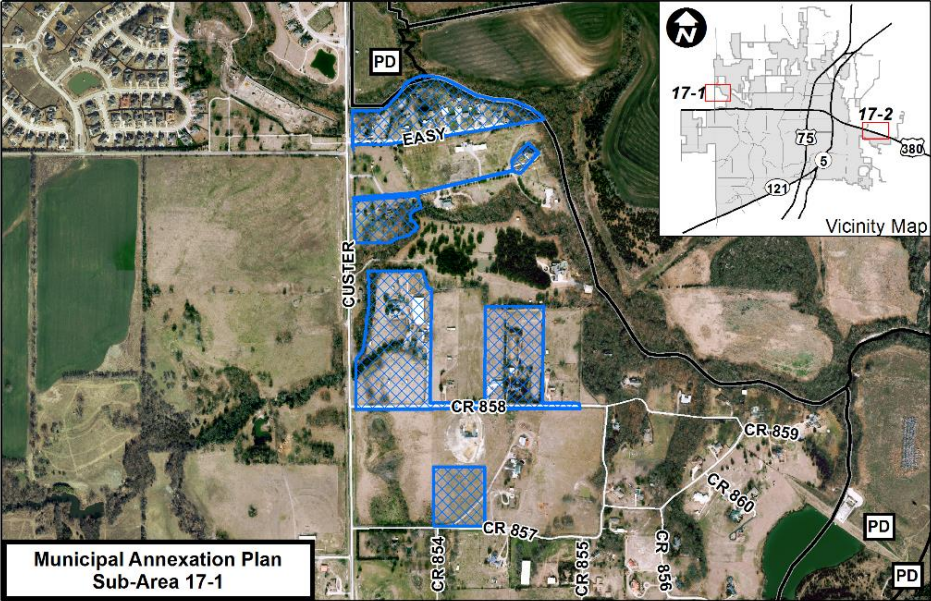
17-201 A



Location Map



Aerial Exhibit



Proposed Annexation: Proposed Service Plan

(Sub-Area 17-1 and Sub-Area 17-2)

- Police Protection
- Fire Protection and Emergency Medical Services
- Fire Prevention
- Solid Waste Collection
- Water Service
- Sanitary Sewer Service
- Streets
- Parks and Recreation
- Environmental, Health, and Code Enforcement Services
- Planning and Zoning
- Miscellaneous (City owned facility, building, or service)

**the City is required to provide the annexed area with a level of service that is comparable to the level of service available in other parts of the City with topography, land use and population density similar to those contemplated or projected in the annexation area.*

Proposed Annexation: Proposed Service Plan

(Sub-Area 17-1 and Sub-Area 17-2)

▪ Water and Sanitary Sewer Services

- provided to the area by any of the methods by which we extend the services to any other area of the municipality
- will be provided at a level of service at least equal to current services available in the City, or **equal to the level of services available in other parts of the City with topography, land use and population density** similar to those contemplated or projected in the annexed area
- For new development, the City of McKinney requires developers to construct the necessary infrastructure to meet the needs of the development. This requirement may also include off-site improvements.

▪ Capital Improvements Program

- Upon annexation, the area becomes eligible for Capital Improvement Program consideration.



Municipal Annexation Plan Timeline

2017

2020

- [2017] Draft/adopt Municipal Annexation Plan
- [2017] Notify property owners included in the Municipal Annexation Plan
- [2017] Collect inventory of public services and publish findings for inspection
- [2017] Create Proposed Service Plan
- [2017] Conduct public hearings for persons interested in the annexation
- [2017] Negotiate and Finalize Service Plan
- [2020] Complete annexation proceedings within 30 days of the third anniversary of the adopted/amended Municipal Annexation Plan

What happens during the 3 years before annexation?

During the three years prior to annexation, properties identified in the annexation plan are still considered part of the ETJ and may continue to legally operate as they currently do.