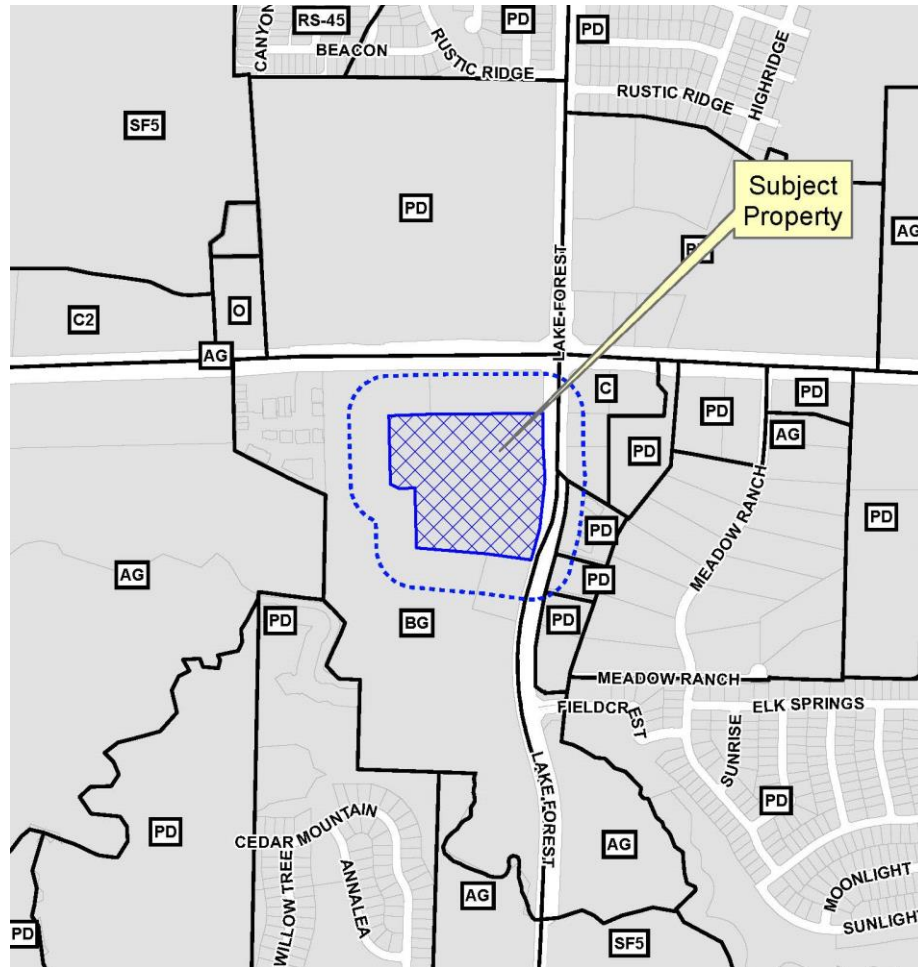


Kroger and Retail
Development
Site Plan
16-153SP

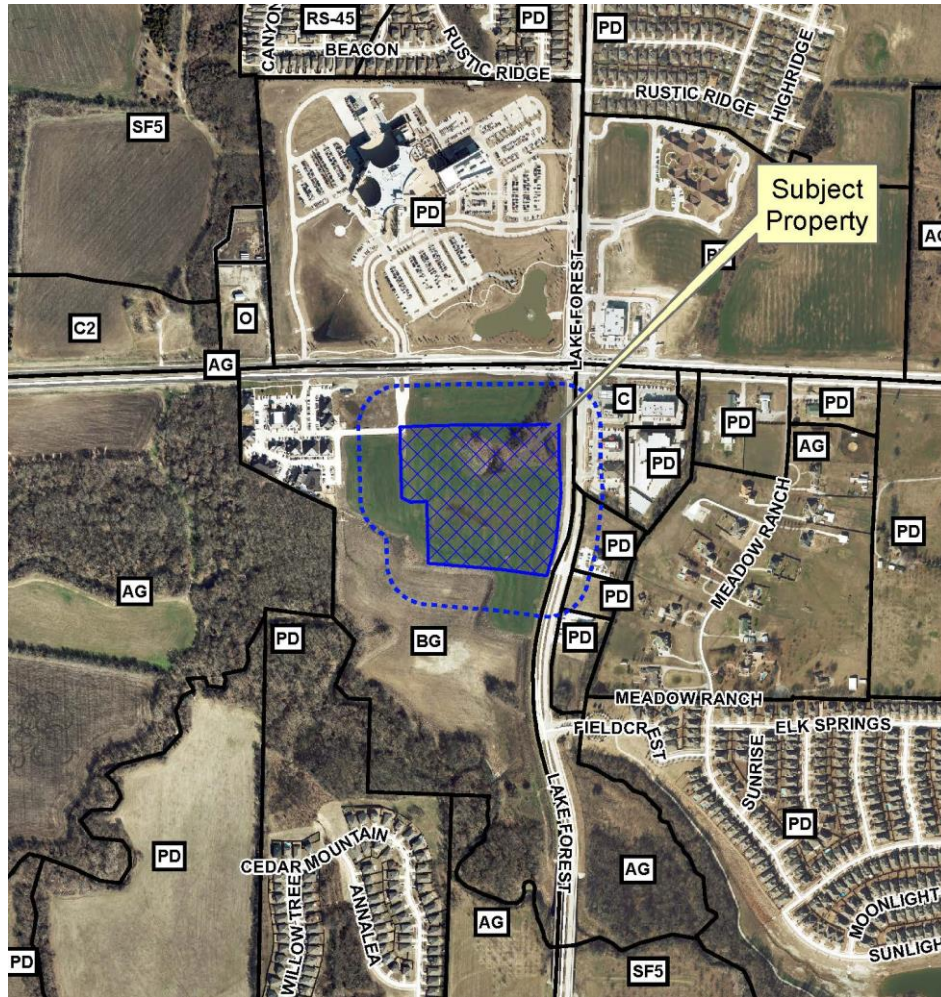


- MONEY MAGAZINE 2014 -

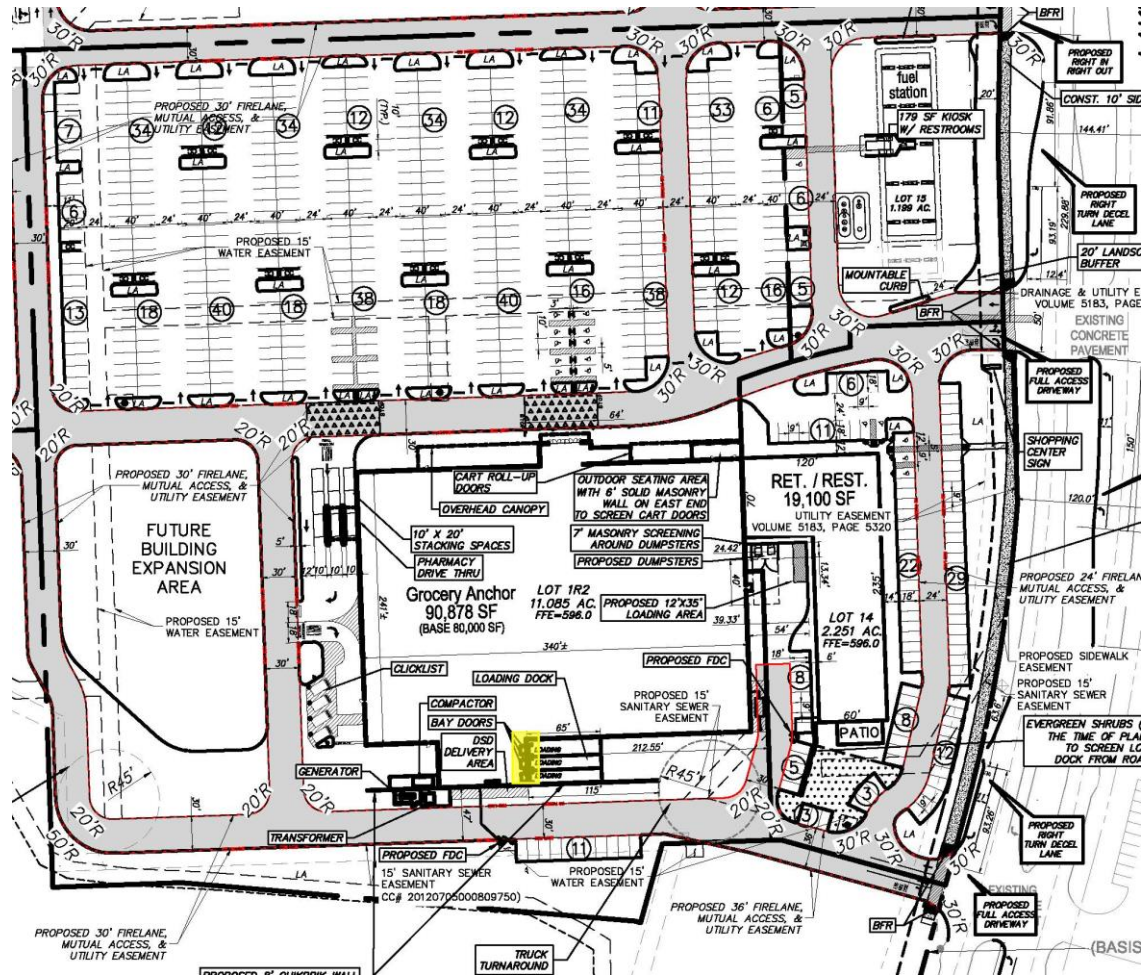
Location Map



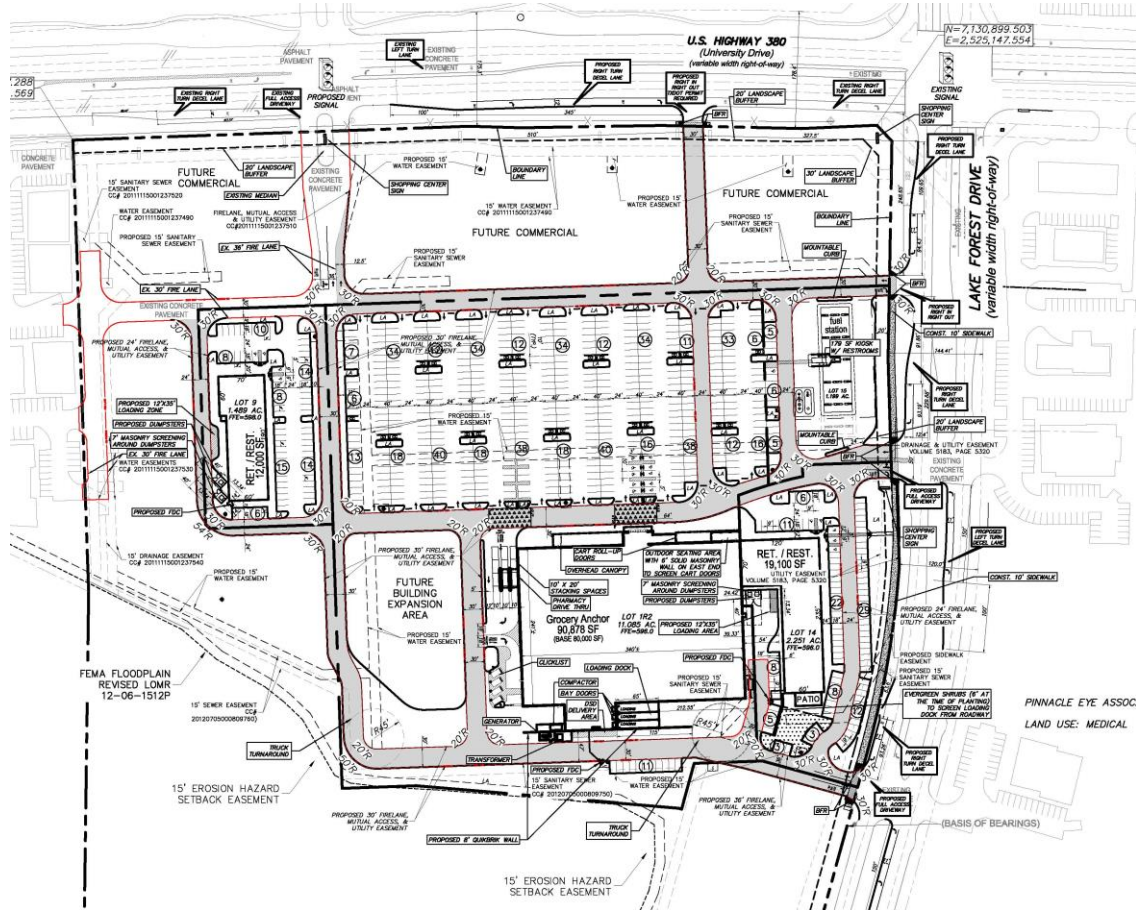
Aerial Exhibit



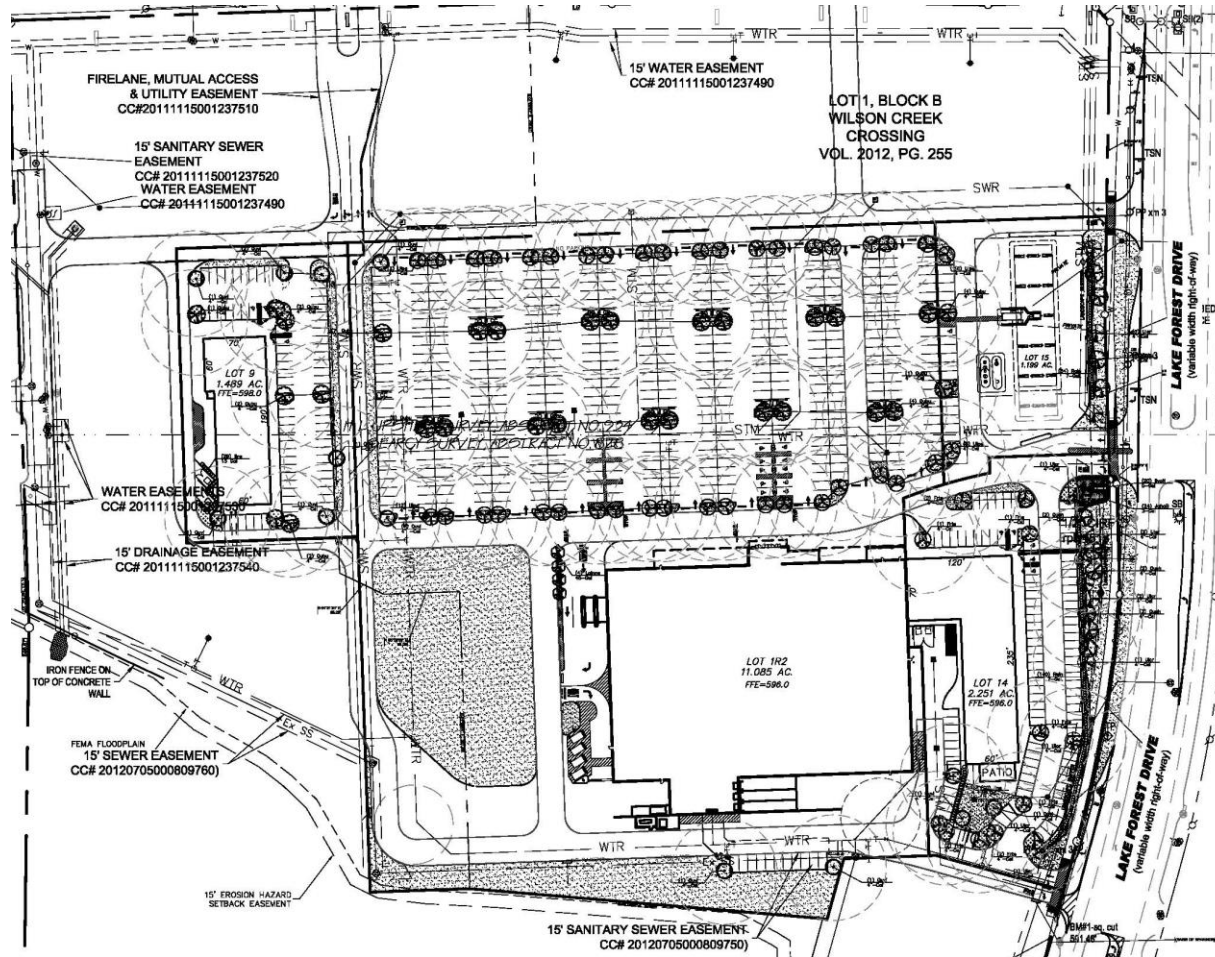
Proposed Site Plan



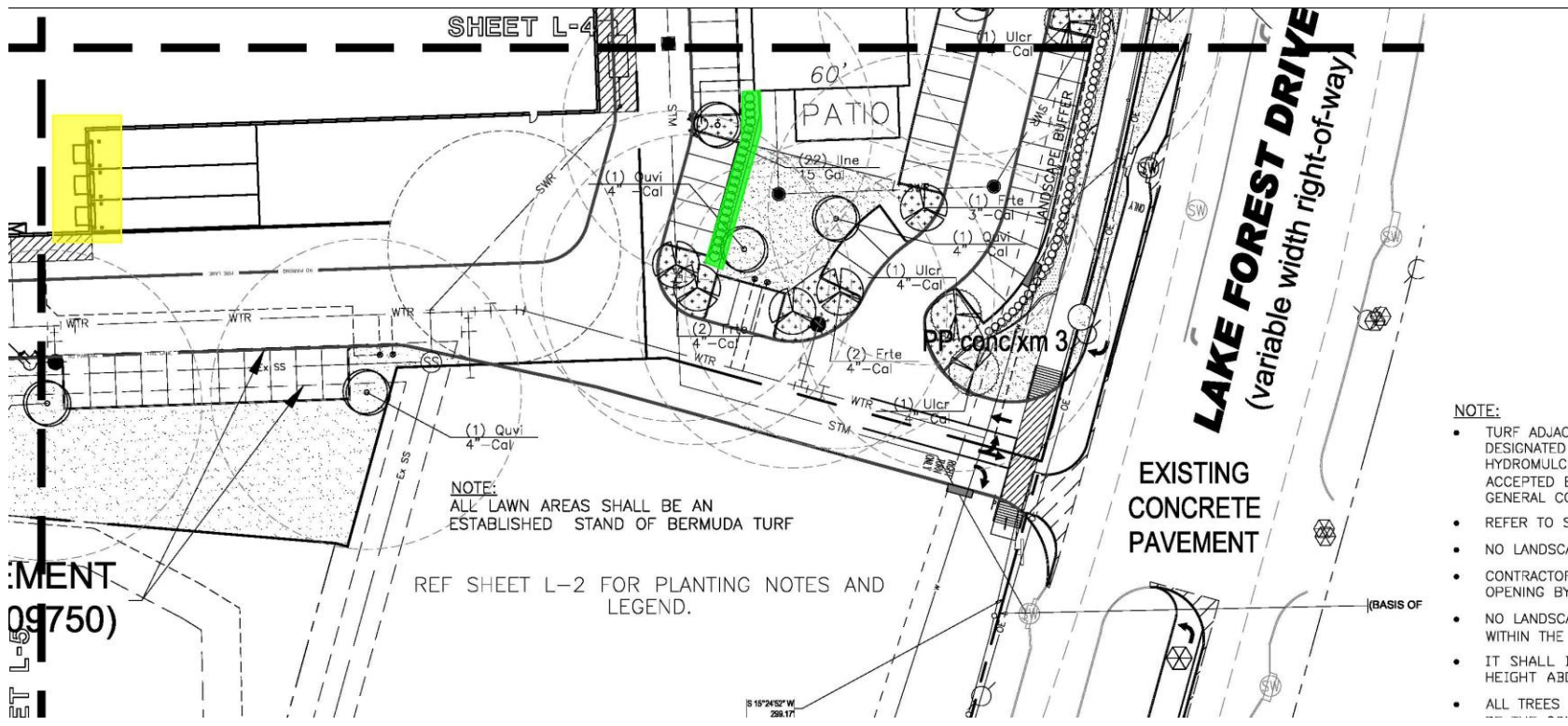
Proposed Site Plan



Proposed Landscape Plan



Proposed Screening



- NOTE:**
- TURF ADJAC DESIGNATED HYDROMULCI ACCEPTED E GENERAL CC
 - REFER TO S
 - NO LANDSC/
 - CONTRACTOR OPENING BY
 - NO LANDSC/ WITHIN THE
 - IT SHALL I HEIGHT ABC
 - ALL TREES

MENT
09750)