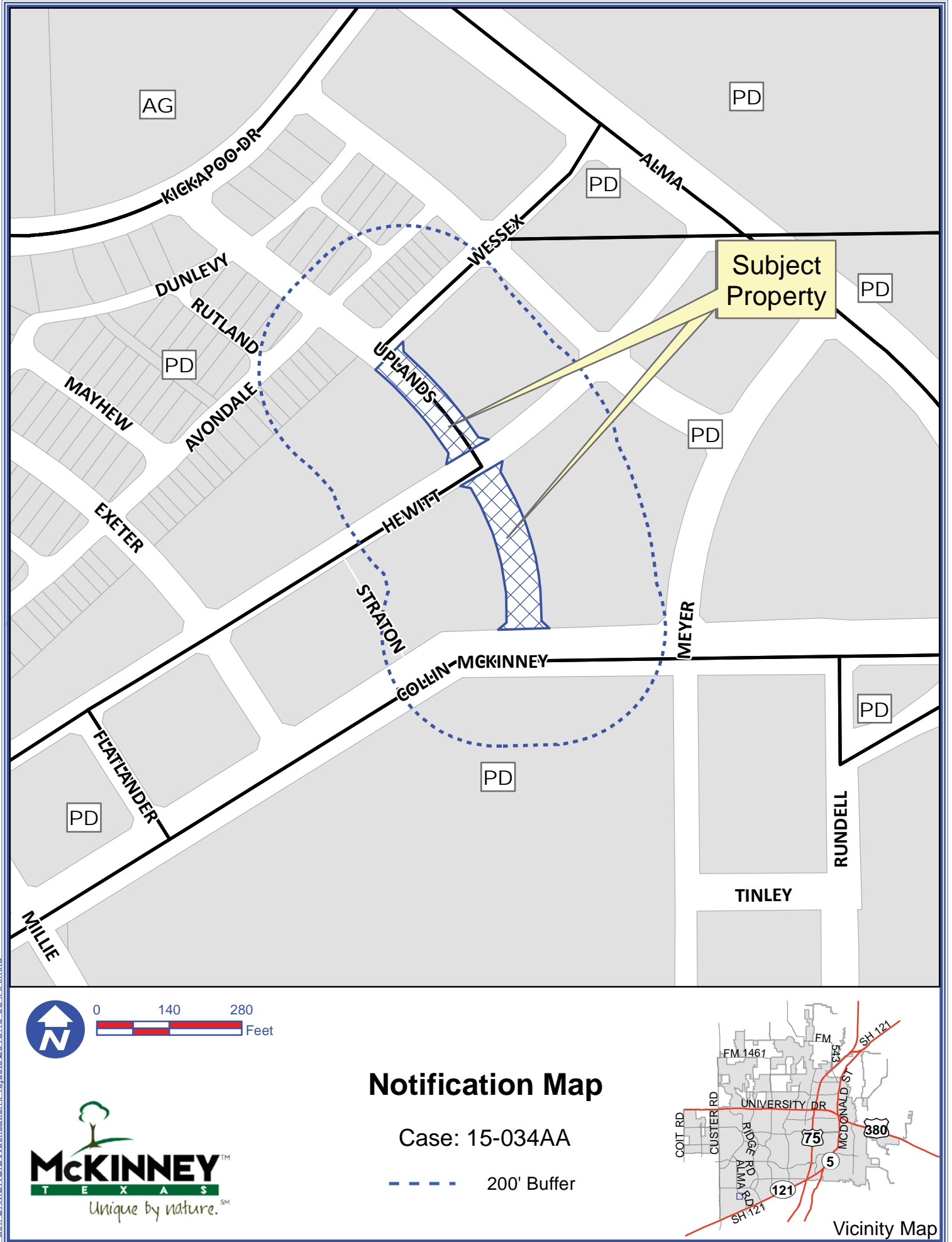


Exhibit A



Path: S:\MCKGIS\Notification\Projects\2015\15-034AA.mxd

DISCLAIMER: This map and information contained in it were developed exclusively for use by the City of McKinney. Any use or reliance on this map by anyone else is at that party's risk and without liability to the City of McKinney, its officials or employees for any discrepancies, errors, or variances which may exist.

Exhibit B

RECEIVED
By PLANNING DEPARTMENT at 12:25 pm, Jan 26, 2015

FIELD NOTE DESCRIPTION

RIGHT OF WAY ABANDONMENT - UPLANDS DRIVE

BEING a 0.397 acre tract of land situated in the George F. Lucas Survey Abstract No. 540 and the Thomas Phillips Survey Abstract No. 717, City of McKinney, Collin County, Texas and being a portion of the right of way of Uplands Drive as dedicated in Cooper Life Center Addition an addition to the City of McKinney according to the plat recorded in Cabinet 2009, Page 402 of the Plat Records of Collin County, Texas (PRCCT) and being more particularly described as follows:

BEGINNING at a 5/8 inch iron rod set for corner at the south end of a corner cut-off line located at the intersection of the north line of Collin McKinney Parkway a 73 feet wide right of way dedicated by plat recorded in Cabinet Q, Page 527 (PRCCT) and the east line of said Uplands Drive a 52 feet wide right of way;

THENCE along the projected north line of said Collin McKinney Parkway, SOUTH 89°29'05" WEST a distance of 82.00 feet to a 5/8 inch iron rod set for corner at the south end of a corner cut-off line located at the intersection of the north line of said Collin McKinney Parkway and the west line of said Uplands Drive;

THENCE along said corner cut-off line, NORTH 44°29'05" EAST a distance of 21.21 feet to a 5/8 inch iron rod set for corner;

THENCE along the west line of said Uplands Drive, NORTH 00°30'55" WEST a distance of 22.20 feet to a 5/8 inch iron rod set for the beginning of a curve to the left having a radius of 474.00 feet a chord bearing of NORTH 16°00'34" WEST;

THENCE continuing along said west line and along said curve to the left through a central angle of 30°59'18" for an arc length of 256.36 feet to a 5/8 inch iron rod set for the southeast end of a corner cut-off line located at the intersection of the west line of said Uplands Drive and the south line of Hewett Drive a 52 feet wide right of way as dedicated by plat recorded in Cabinet 2009, Page 402 (PRCCT);

THENCE along said corner cut-off line, NORTH 77°38'56" WEST a distance of 20.89 feet to a 5/8 inch iron rod set for the beginning of a non-tangent curve to the left having a radius of 1776.00 feet a chord bearing of NORTH 55°24'24" EAST;

THENCE along the projected south line of said Hewitt Drive and along said non-tangent curve to the left through a central angle of 02°38'51" for an arc length of 82.06 feet to a 5/8 inch iron rod set for the north corner of a corner cut-off line located at the intersection of the south line of said Hewitt Drive and the east line of said Uplands Drive;

THENCE along said corner cut-off line, SOUTH 11°15'22" WEST a distance of 21.92 feet to a 5/8 inch iron rod set for the beginning of a non-tangent curve to the right having a radius of 526.00 feet a chord bearing of SOUTH 16°09'44" EAST;

THENCE along the east line of said Uplands Drive and along said non-tangent curve to the right through a central angle of 31°17'39" for an arc length of 287.29 feet to a 5/8 inch iron rod set for corner;

THENCE continuing along said east line, SOUTH 00°30'55" EAST a distance of 22.20 feet to a 5/8 inch iron rod set for the north end of a corner cut-off line located at the intersection of the east line of said Uplands Drive and the north line of said Collin McKinney Drive;

THENCE along said corner cut-off line, SOUTH 45°30'55" EAST a distance of 21.21 feet to the POINT OF BEGINNING;

CONTAINING 0.397 acres or 17,292 square feet of land more or less.



Austin J. Bedford
Registered Professional Land Surveyor No. 4132
A.J. Bedford Group, Inc.
301 North Alamo Road
Rockwall, Texas 75087



SHEET 1 OF 2	SCALE: 1" = 60'	DATE: 01/20/2015
	TECHNICIAN: Elam	
	DRAWN BY: Elam	
	FILE: ROW Aband Exh 1-20-15	
	PROJECT No. 159-	

RIGHT OF WAY ABANDONMENT UPLANDS DRIVE

CAB. 2009, PG. 402
CITY OF MCKINNEY
COLLIN COUNTY, TEXAS

 **Bedford Group, Inc.**

Registered Professional Land Surveyors

301 N. Alamo Road * Rockwall, Texas 75087
(972) 722-0225 www.ajbedfordgroup.com ajb@ajbedfordgroup.com

Exhibit C

FIELD NOTE DESCRIPTION

RIGHT OF WAY ABANDONMENT - UPLANDS DRIVE

BEING a 0.309 acre tract of land situated in the George F. Lucas Survey Abstract No. 540, City of McKinney, Collin County, Texas and being a portion of the right of way of Uplands Drive as dedicated in Cooper Life Center Addition an addition to the City of McKinney according to the plat recorded in Cabinet 2009, Page 402 of the Plat Records of Collin County, Texas (PRCCT) and being more particularly described as follows:

BEGINNING at a 5/8 inch iron rod set for corner at the east corner of a corner cut-off line located at the intersection of the north line of Hewitt Drive a 52 feet wide right of way as dedicated by plat recorded in Cabinet 2009, Page 402 (PRCCT) and the east line of said Uplands Drive and being the beginning of a curve to the right having a radius of 1724.00 feet a chord bearing of SOUTH 55°19'22" WEST;

THENCE along the projected north line of said Hewitt Drive and along said curve to the right through a central angle of 02°43'39" for an arc length of 82.07 feet to a 5/8 inch iron rod set for corner at the south end of a corner cut-off line located at the intersection of the north line of said Hewitt Drive and the west line of said Uplands Drive;

THENCE along said corner cut-off line, NORTH 12°18'44" EAST a distance of 21.53 feet to a 5/8 inch iron rod set for corner;

THENCE along the west line of said Uplands Drive, NORTH 31°48'45" WEST a distance of 1.46 feet to a 5/8 inch iron rod set for the beginning of a curve to the left having a radius of 724.00 feet a chord bearing of NORTH 40°59'35" WEST;

THENCE continuing along said west line and along said curve to the left through a central angle of 18°21'40" for an arc length of 232.01 feet to a 5/8 inch iron rod set for corner in the projected south line of Wessex Court a 52 feet wide right of way as dedicated by plat recorded in Cabinet 2009, Page 402 (PRCCT);

THENCE along the projected south line of said Wessex Court, NORTH 46°54'54" EAST a distance of 67.37 feet to a 5/8 inch iron rod set for corner at the north end of a corner cut-off line located at the intersection of the south line of said Wessex Court and the east line of said Uplands Drive;

THENCE along said corner cut-off line, SOUTH 01°06'50" EAST a distance of 20.06 feet to a 5/8 inch iron rod set for the beginning of a non-tangent curve to the right having a radius of 776.00 feet a chord bearing of SOUTH 40°14'35" EAST;

THENCE along the east line of said Uplands Drive and along said non-tangent curve to the right through a central angle of 16°41'30" for an arc length of 226.07 feet to a 5/8 inch iron rod set for corner at the north end of a corner cut-off line located at the intersection of the east line of said Uplands Drive and the north line of said Hewitt Drive;

THENCE along said corner cut-off line, SOUTH 78°48'14" EAST a distance of 20.46 feet to the POINT OF BEGINNING;

CONTAINING 0.309 acres or 13,461 square feet of land more or less.



Austin J. Bedford
Registered Professional Land Surveyor No. 4132
A.J. Bedford Group, Inc.
301 North Alamo Road
Rockwall, Texas 75087



SHEET 1 OF 2	SCALE: 1" = 60'	DATE: 01/20/2015
	TECHNICIAN: Elam	
	DRAWN BY: Elam	
	FILE: ROW Aband Exh 1-20-15	
	PROJECT No. 159-	

RIGHT OF WAY ABANDONMENT UPLANDS DRIVE

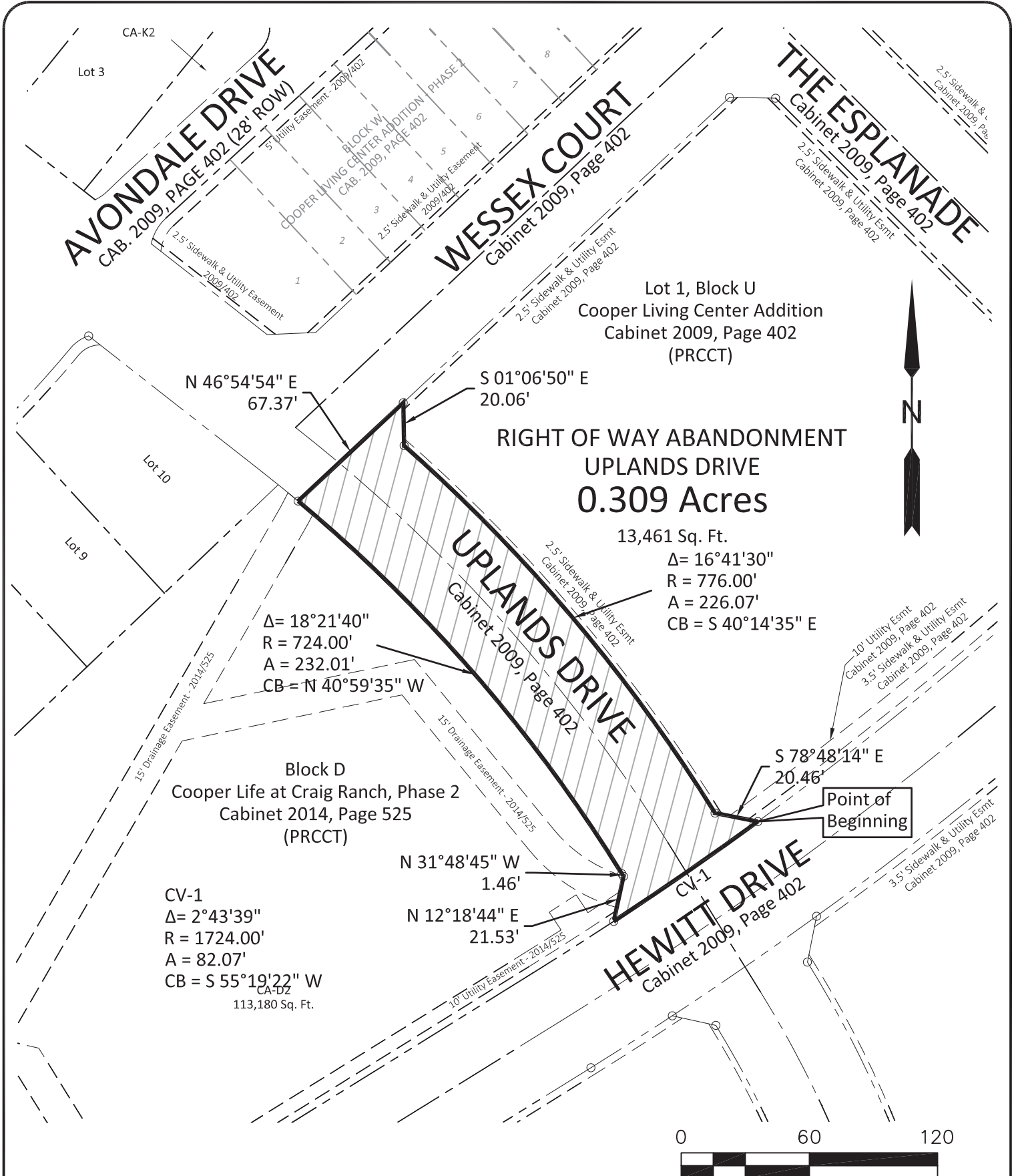
CAB. 2009, PG. 402
CITY OF MCKINNEY
COLLIN COUNTY, TEXAS

 **Bedford Group, Inc.**

Registered Professional Land Surveyors

301 N. Alamo Road * Rockwall, Texas 75087
(972) 722-0225 www.ajbedfordgroup.com ajb@ajbedfordgroup.com

Exhibit C



Lot 1, Block U
Cooper Living Center Addition
Cabinet 2009, Page 402
(PRCT)

RIGHT OF WAY ABANDONMENT UPLANDS DRIVE 0.309 Acres

13,461 Sq. Ft.
 $\Delta = 16^\circ 41' 30''$
 $R = 776.00'$
 $A = 226.07'$
 $CB = S 40^\circ 14' 35'' E$

$\Delta = 18^\circ 21' 40''$
 $R = 724.00'$
 $A = 232.01'$
 $CB = N 40^\circ 59' 35'' W$

Block D
Cooper Life at Craig Ranch, Phase 2
Cabinet 2014, Page 525
(PRCT)

CV-1
 $\Delta = 2^\circ 43' 39''$
 $R = 1724.00'$
 $A = 82.07'$
 $CB = S 55^\circ 19' 22'' W$
 CA-DZ
 113,180 Sq. Ft.

$N 31^\circ 48' 45'' W$ 1.46'
 $N 12^\circ 18' 44'' E$ 21.53'

$S 78^\circ 48' 14'' E$ 20.46'

Point of Beginning



SHEET 2 OF 2	SCALE: 1" = 60'	DATE: 01/20/2015
	TECHNICIAN: Elam	
	DRAWN BY: Elam	
	FILE: ROW Aband Exh 1-20-15	
	PROJECT No. 159-	

**RIGHT OF WAY
ABANDONMENT
UPLANDS DRIVE**
 CAB. 2009, PG. 402
 CITY OF MCKINNEY
 COLLIN COUNTY, TEXAS

Bedford Group, Inc.

Registered Professional Land Surveyors

301 N. Alamo Road * Rockwall, Texas 75087
 (972) 722-0225 www.ajbedfordgroup.com ajb@ajbedfordgroup.com