



01 BLOCK A WEST ELEVATION (TENNESSEE ST)



02 BLOCK A WEST ELEVATION (TENNESSEE ST)

### COLOR KEY

1	Heron Plume SW 6070 Stucco
2	Wool Skein SW 6148 Stucco
3	Mindful Gray SW 7016 Stucco
4	Porpoise SW 7047 Stucco
5	Anonymous SW 7046 Lap Siding
6	Acme Cinnebar Brick*
7	Acme Red Sunset Brick*
8	Acme Mushroom Gray Brick*
9	Acme Ebony Brick*
10	PAC-CLAD Weathered Zinc Mtl. Panel
11	PAC-CLAD Zinc Mtl. Panel
12	Pre-Finished Dark Bronze Mtl.
13	Cast Stone Band

NOTE:  
 1) ALL MATERIALS AND COLORS TO RETURN TO AN INSIDE CORNER.  
 2) ALL VINYL WINDOWS TO BE WHITE.  
 3) \*TO BE CONFIRMED

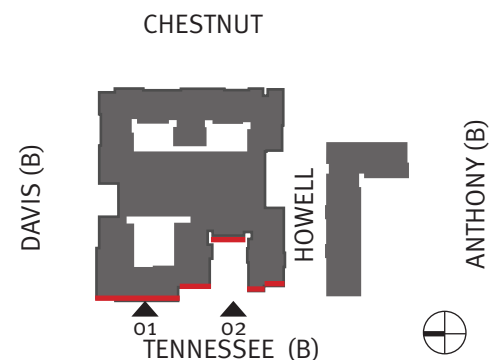
### Material % Calculations (Detail o1 + o2)

	% Total	% Required
Brick	83%	80%
Stucco	13%	Not to Exceed 20%
Metal Panel	4%	

### Glazing % Calculations (Detail o1 + o2)

See Note 3	Gross Sqft	Glazing Sqft	% Total	% Required
Lvl 1 Combined	4088 Sqft	2106 Sqft	51%	65%
Residential Lvl 2	3718 Sqft	1314 Sqft	35%	30%
Residential Lvl 3	3718 Sqft	1314 Sqft	35%	
Residential Lvl 4	3137 Sqft	1360 Sqft	43%	

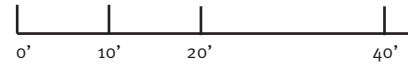
NOTE: 1) Retail HVAC equipment located & screened in private courtyards.  
 2) Residential HVAC equipment located on roof courtyard side.  
 3) Retail Facade Glazing ≥ 65%



Downtown McKinney Block A&B  
 McKinney, TX



Facade Elevations



10.10.2016 2015034.00 ad  
 Copyright © JHP 2016  
 Not for Regulatory Approval, Permit or Construction: J. Mark Wolf, AIA  
 Registered Architect of State of Texas, Registration No. 9129



01 BLOCK A NORTH ELEVATION (DAVIS ST)

### COLOR KEY

1	Heron Plume SW 6070 Stucco
2	Wool Skein SW 6148 Stucco
3	Mindful Gray SW 7016 Stucco
4	Porpoise SW 7047 Stucco
5	Anonymous SW 7046 Lap Siding
6	Acme Cinnebar Brick*
7	Acme Red Sunset Brick*
8	Acme Mushroom Gray Brick*
9	Acme Ebony Brick*
10	PAC-CLAD Weathered Zinc Mtl. Panel
11	PAC-CLAD Zinc Mtl. Panel
12	Pre-Finished Dark Bronze Mtl.
13	Cast Stone Band

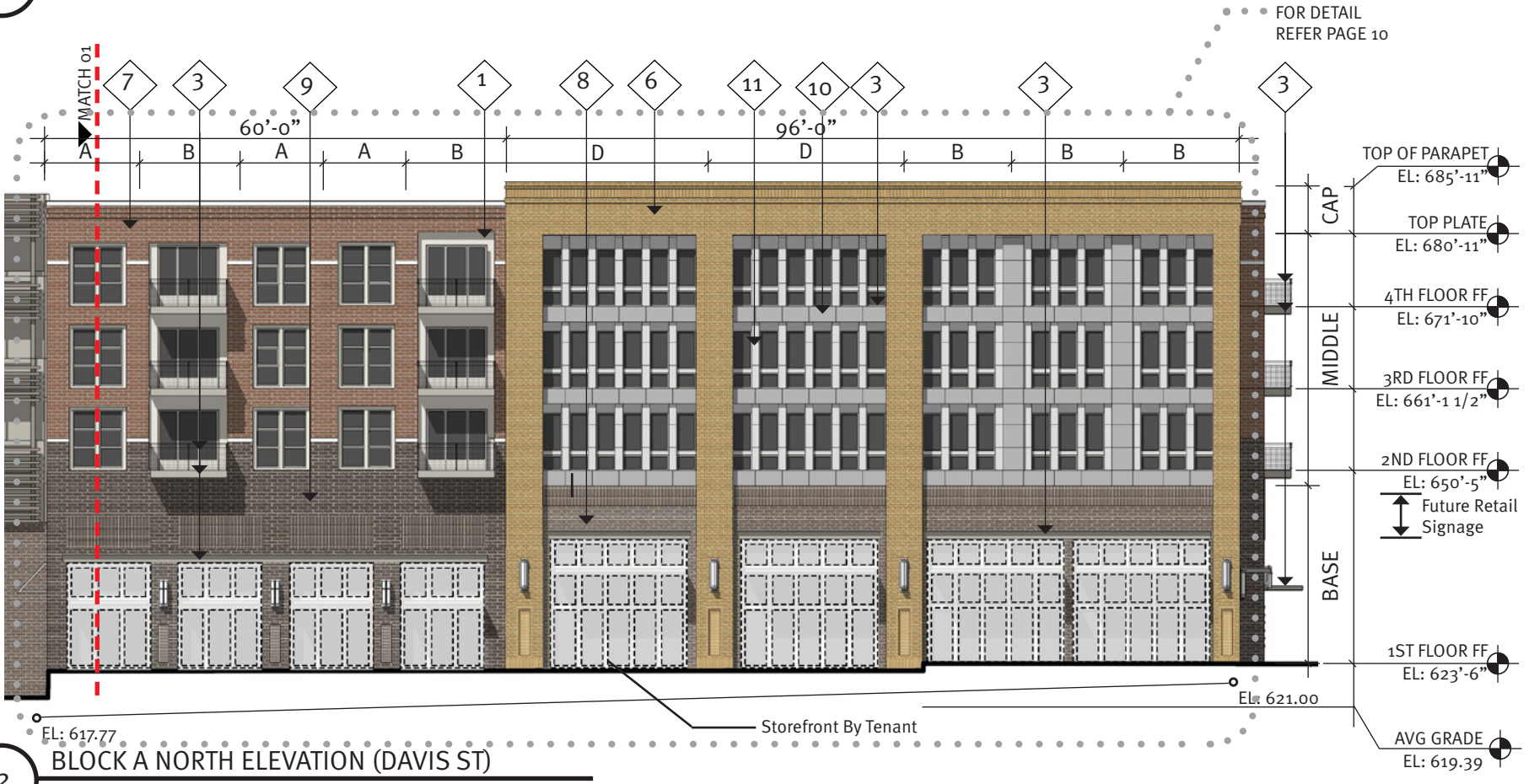
NOTE:  
 1) ALL MATERIALS AND COLORS TO RETURN TO AN INSIDE CORNER.  
 2) ALL VINYL WINDOWS TO BE WHITE.  
 3) \*TO BE CONFIRMED

Material % Calculations (Detail 01 + 02)

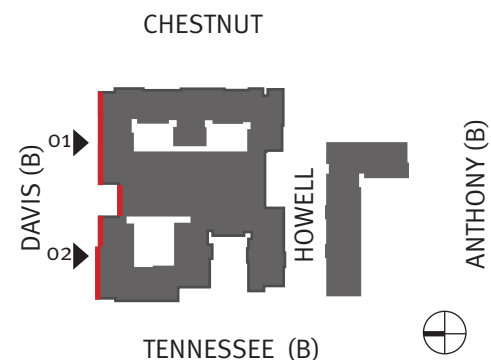
	% Total	% Required
Brick	85%	80%
Stucco	6%	Not to Exceed 20%
Metal Panel	9%	

Glazing % Calculations (Detail 01 + 02)

	Gross Sqft	Glazing Sqft	% Total	% Required
Retail Lvl 1	4838 Sqft	3355 Sqft	70%	30%
Residential Lvl 2	4228 Sqft	1500 Sqft	35%	
Residential Lvl 3	4228 Sqft	1500 Sqft	35%	
Residential Lvl 4	3587 Sqft	1500 Sqft	42%	



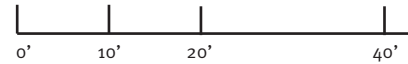
02 BLOCK A NORTH ELEVATION (DAVIS ST)



Downtown McKinney Block A&B  
 McKinney, TX



Facade Elevations



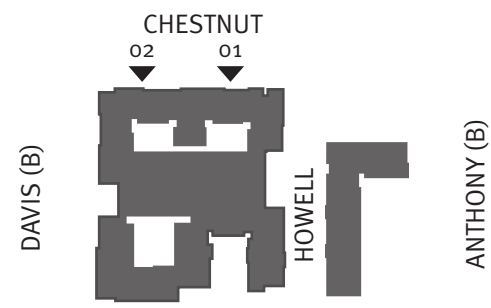
10.10.2016 2015034.00 ad

Copyright © JHP 2016  
 Not for Regulatory Approval, Permit or Construction: J. Mark Wolf, AIA  
 Registered Architect of State of Texas, Registration No. 9129

**COLOR KEY**

- 1 Heron Plume SW 6070 Stucco
- 2 Wool Skein SW 6148 Stucco
- 3 Mindful Gray SW 7016 Stucco
- 4 Porpoise SW 7047 Stucco
- 5 Anonymous SW 7046 Lap Siding
- 6 Acme Cinnebar Brick\*
- 7 Acme Red Sunset Brick\*
- 8 Acme Mushroom Gray Brick\*
- 9 Acme Ebony Brick\*
- 10 PAC-CLAD Weathered Zinc Mtl. Panel
- 11 PAC-CLAD Zinc Mtl. Panel
- 12 Pre-Finished Dark Bronze Mtl.
- 13 Cast Stone Band

**NOTE:**  
 1) ALL MATERIALS AND COLORS TO RETURN TO AN INSIDE CORNER.  
 2) ALL VINYL WINDOWS TO BE WHITE.  
 3) \*TO BE CONFIRMED



01 **BLOCK A EAST ELEVATION (CHESTNUT ST)**



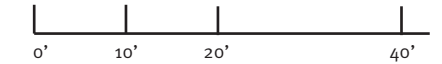
02 **BLOCK A EAST ELEVATION (CHESTNUT ST)**



Downtown McKinney Block A&B  
 McKinney, TX



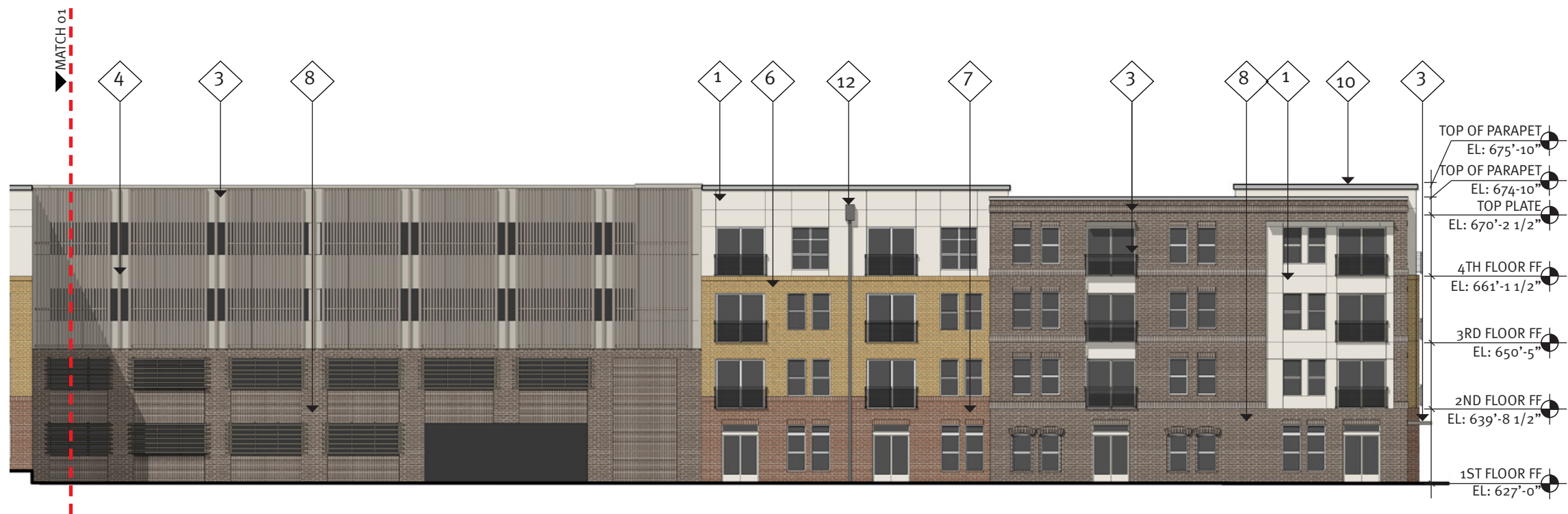
Facade Elevations



10.10.2016 2015034.00 ad  
 Copyright © JHP 2016  
 Not for Regulatory Approval, Permit or Construction: J. Mark Wolf, AIA  
 Registered Architect of State of Texas, Registration No. 9129



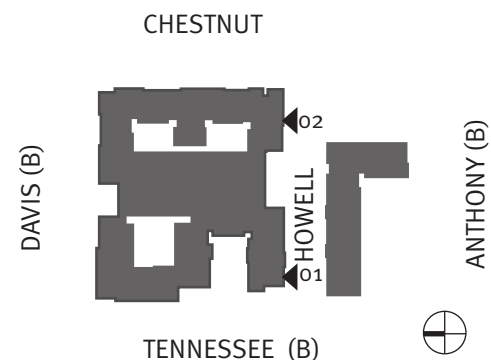
01 BLOCK A SOUTH ELEVATION (HOWELL ST)



02 BLOCK A SOUTH ELEVATION (HOWELL ST)

COLOR KEY	
1	Heron Plume SW 6070 Stucco
2	Wool Skein SW 6148 Stucco
3	Mindful Gray SW 7016 Stucco
4	Porpoise SW 7047 Stucco
5	Anonymous SW 7046 Lap Siding
6	Acme Cinnebar Brick*
7	Acme Red Sunset Brick*
8	Acme Mushroom Gray Brick*
9	Acme Ebony Brick*
10	PAC-CLAD Weathered Zinc Mtl. Panel
11	PAC-CLAD Zinc Mtl. Panel
12	Pre-Finished Dark Bronze Mtl.
13	Cast Stone Band

NOTE:  
 1) ALL MATERIALS AND COLORS TO RETURN TO AN INSIDE CORNER.  
 2) ALL VINYL WINDOWS TO BE WHITE.  
 3) \*TO BE CONFIRMED





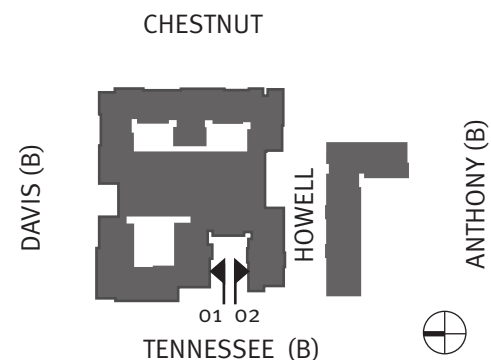
01 BLOCK A SOUTH POOL COURTYARD ELEVATION

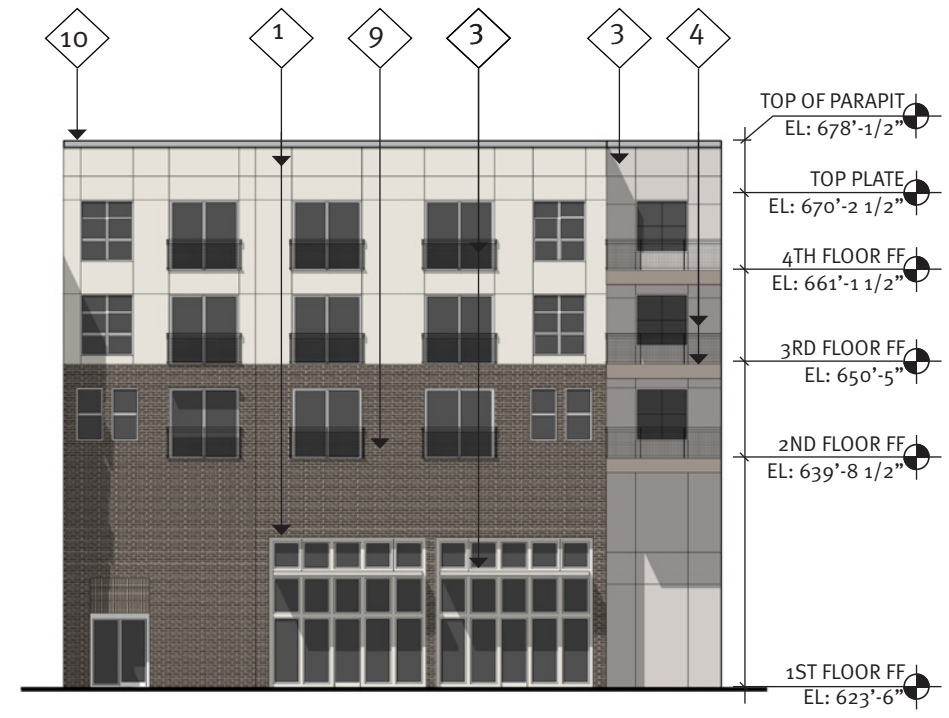


02 BLOCK A NORTH POOL COURTYARD ELEVATION

COLOR KEY	
1	Heron Plume SW 6070 Stucco
2	Wool Skein SW 6148 Stucco
3	Mindful Gray SW 7016 Stucco
4	Porpoise SW 7047 Stucco
5	Anonymous SW 7046 Lap Siding
6	Acme Cinnebar Brick*
7	Acme Red Sunset Brick*
8	Acme Mushroom Gray Brick*
9	Acme Ebony Brick*
10	PAC-CLAD Weathered Zinc Mtl. Panel
11	PAC-CLAD Zinc Mtl. Panel
12	Pre-Finished Dark Bronze Mtl.
13	Cast Stone Band

NOTE:  
 1) ALL MATERIALS AND COLORS TO RETURN TO AN INSIDE CORNER.  
 2) ALL VINYL WINDOWS TO BE WHITE.  
 3) \*TO BE CONFIRMED





COLOR KEY	
1	Heron Plume SW 6070 Stucco
2	Wool Skein SW 6148 Stucco
3	Mindful Gray SW 7016 Stucco
4	Porpoise SW 7047 Stucco
5	Anonymous SW 7046 Lap Siding
6	Acme Cinnebar Brick*
7	Acme Red Sunset Brick*
8	Acme Mushroom Gray Brick*
9	Acme Ebony Brick*
10	PAC-CLAD Weathered Zinc Mtl. Panel
11	PAC-CLAD Zinc Mtl. Panel
12	Pre-Finished Dark Bronze Mtl.
13	Cast Stone Band

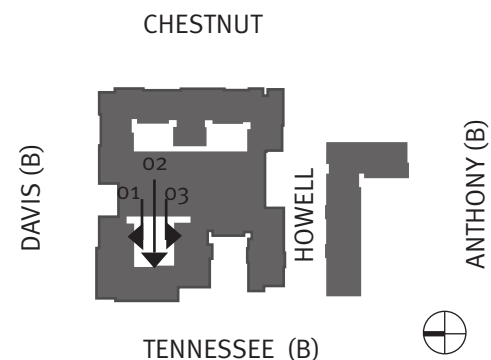
NOTE:  
 1) ALL MATERIALS AND COLORS TO RETURN TO AN INSIDE CORNER.  
 2) ALL VINYL WINDOWS TO BE WHITE.  
 3) \*TO BE CONFIRMED

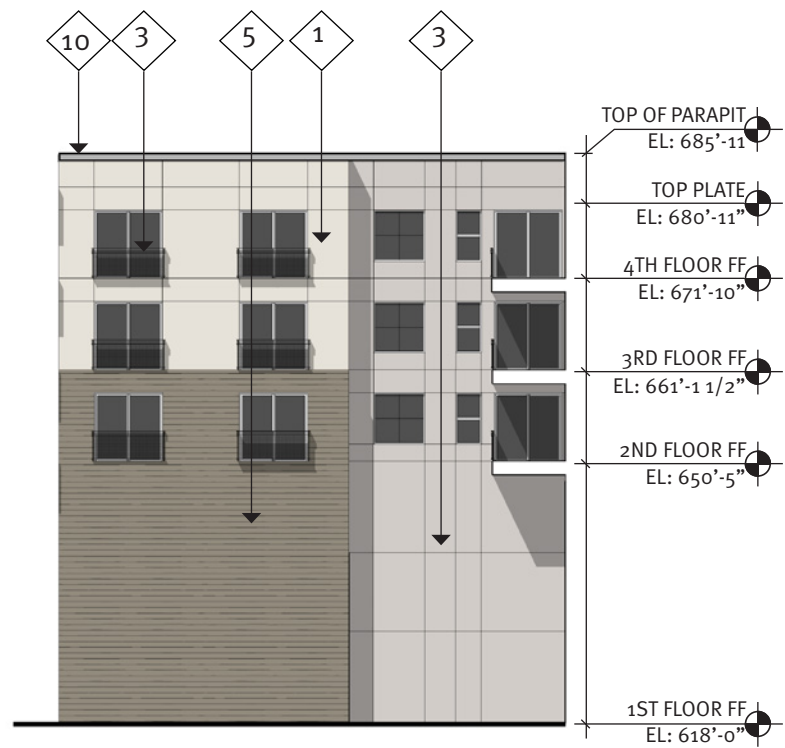
01 BLOCK A SOUTH COURTYARD A ELEVATION  
NOT PUBLIC FRONTAGE

02 BLOCK A EAST COURTYARD A ELEVATION  
NOT PUBLIC FRONTAGE

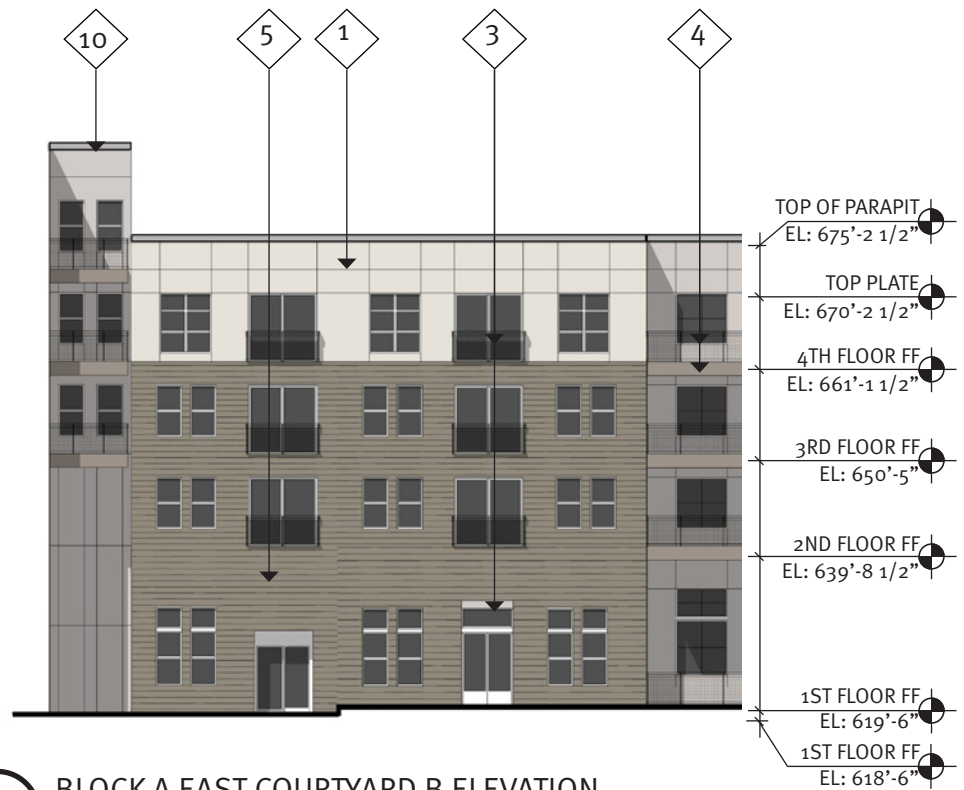


03 BLOCK A NORTH COURTYARD A ELEVATION  
NOT PUBLIC FRONTAGE

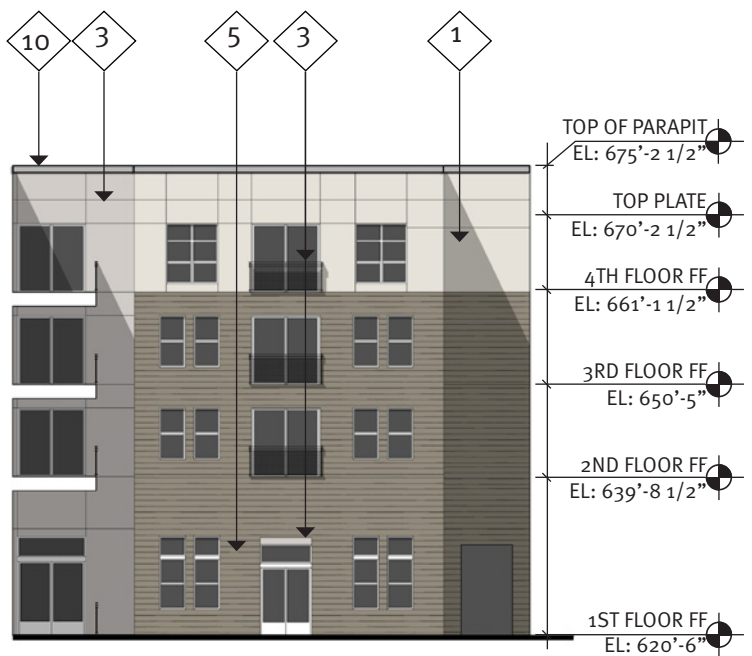




01 BLOCK A SOUTH COURTYARD B ELEVATION  
NOT PUBLIC FRONTAGE



02 BLOCK A EAST COURTYARD B ELEVATION  
NOT PUBLIC FRONTAGE



03 BLOCK A NORTH COURTYARD B ELEVATION  
NOT PUBLIC FRONTAGE

COLOR KEY	
1	Heron Plume SW 6070 Stucco
2	Wool Skein SW 6148 Stucco
3	Mindful Gray SW 7016 Stucco
4	Porpoise SW 7047 Stucco
5	Anonymous SW 7046 Lap Siding
6	Acme Cinnebar Brick*
7	Acme Red Sunset Brick*
8	Acme Mushroom Gray Brick*
9	Acme Ebony Brick*
10	PAC-CLAD Weathered Zinc Mtl. Panel
11	PAC-CLAD Zinc Mtl. Panel
12	Pre-Finished Dark Bronze Mtl.
13	Cast Stone Band

NOTE:  
 1) ALL MATERIALS AND COLORS TO RETURN TO AN INSIDE CORNER.  
 2) ALL VINYL WINDOWS TO BE WHITE.  
 3) \*TO BE CONFIRMED

CHESTNUT



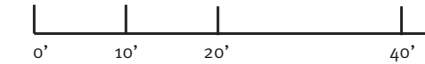
TENNESSEE (B)



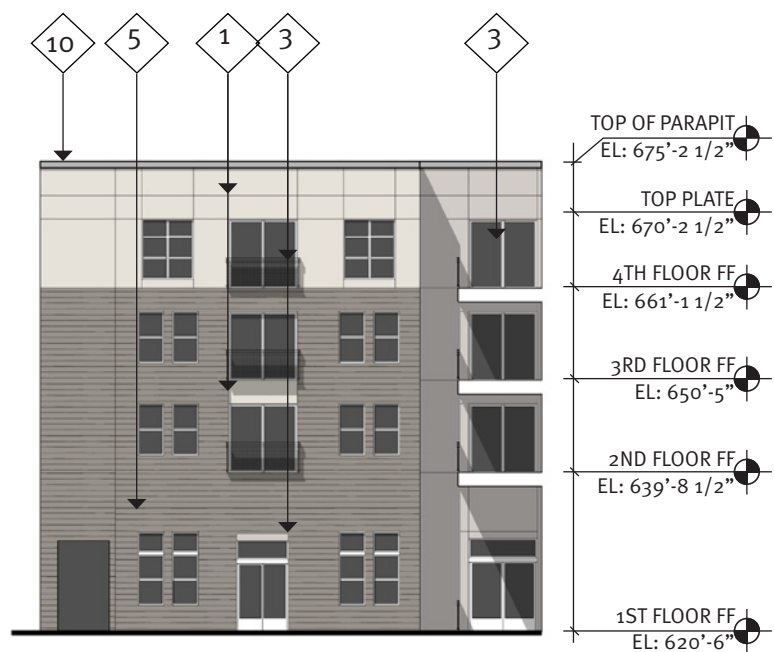
Downtown McKinney Block A&B  
McKinney, TX



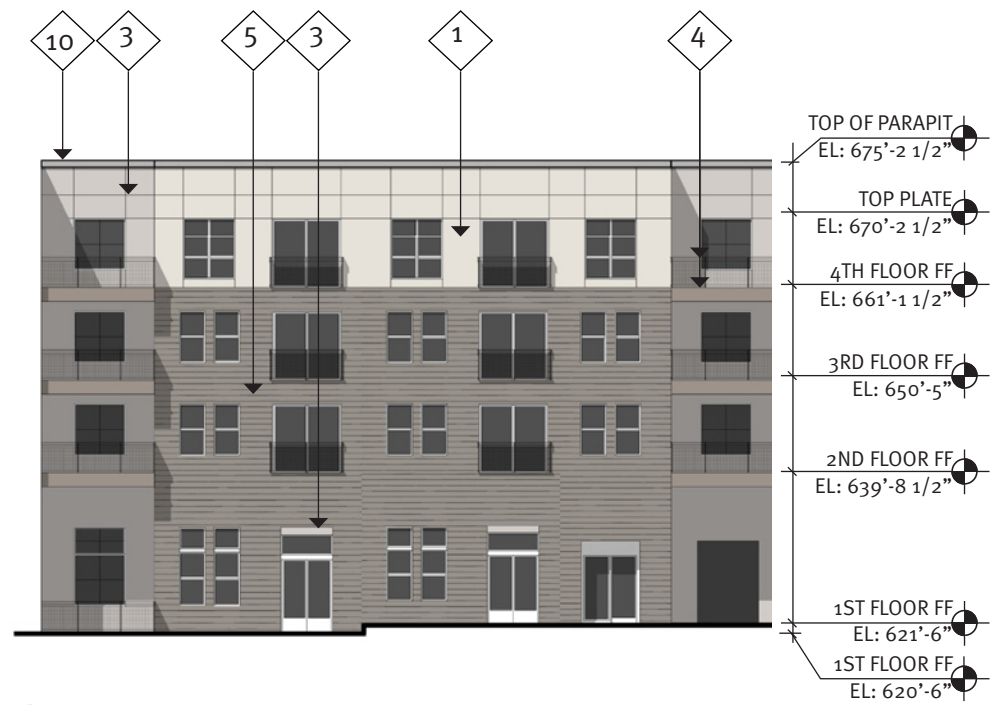
Facade Elevations



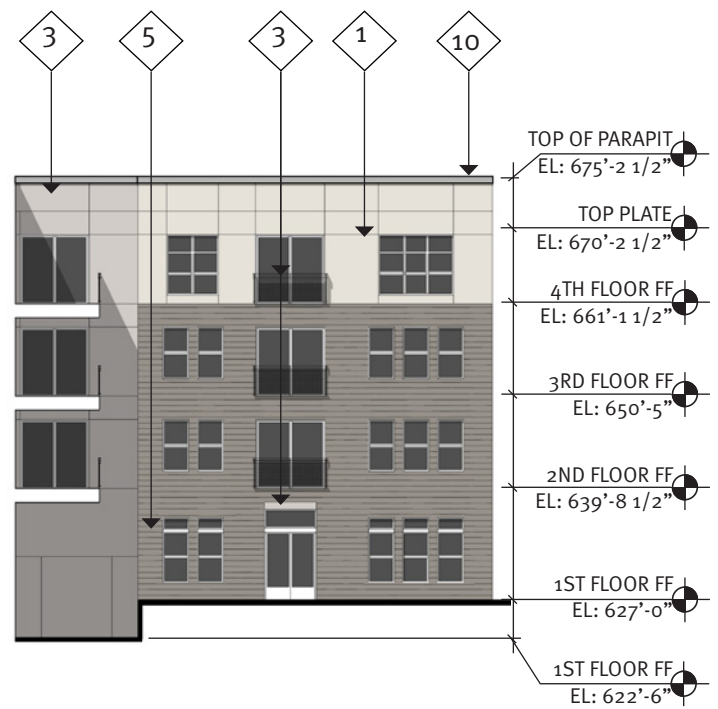
10.10.2016	2015034.00	ad
Copyright © JHP 2016 Not for Regulatory Approval, Permit or Construction: J. Mark Wolf, AIA Registered Architect of State of Texas, Registration No. 9129		



**01** BLOCK A SOUTH COURTYARD C ELEVATION  
NOT PUBLIC FRONTAGE



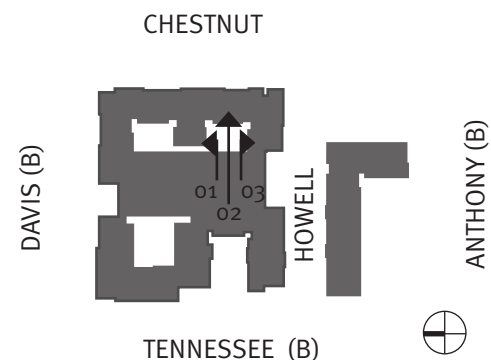
**02** BLOCK A WEST COURTYARD C ELEVATION  
NOT PUBLIC FRONTAGE



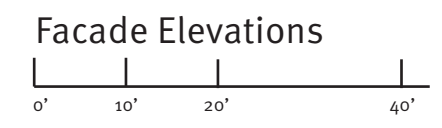
**03** BLOCK A NORTH COURTYARD C ELEVATION  
NOT PUBLIC FRONTAGE

COLOR KEY	
1	Heron Plume SW 6070 Stucco
2	Wool Skein SW 6148 Stucco
3	Mindful Gray SW 7016 Stucco
4	Porpoise SW 7047 Stucco
5	Anonymous SW 7046 Lap Siding
6	Acme Cinnebar Brick*
7	Acme Red Sunset Brick*
8	Acme Mushroom Gray Brick*
9	Acme Ebony Brick*
10	PAC-CLAD Weathered Zinc Mtl. Panel
11	PAC-CLAD Zinc Mtl. Panel
12	Pre-Finished Dark Bronze Mtl.
13	Cast Stone Band

NOTE:  
 1) ALL MATERIALS AND COLORS TO RETURN TO AN INSIDE CORNER.  
 2) ALL VINYL WINDOWS TO BE WHITE.  
 3) \*TO BE CONFIRMED



Downtown McKinney Block A&B  
McKinney, TX



10.10.2016	2015034.00	ad
Copyright © JHP 2016 Not for Regulatory Approval, Permit or Construction: J. Mark Wolf, AIA Registered Architect of State of Texas, Registration No. 9129		





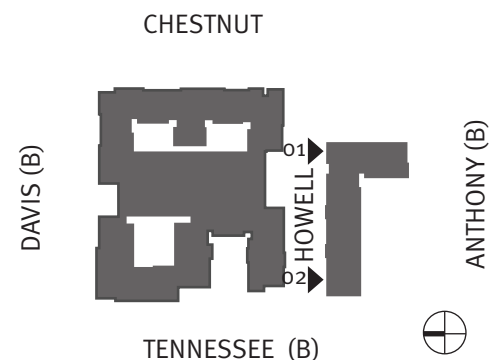
01 BLOCK B NORTH ELEVATION (HOWELL ST)



02 BLOCK B NORTH ELEVATION (HOWELL ST)

COLOR KEY	
1	Heron Plume SW 6070 Stucco
2	Wool Skein SW 6148 Stucco
3	Mindful Gray SW 7016 Stucco
4	Porpoise SW 7047 Stucco
5	Anonymous SW 7046 Lap Siding
6	Acme Cinnebar Brick*
7	Acme Red Sunset Brick*
8	Acme Mushroom Gray Brick*
9	Acme Ebony Brick*
10	PAC-CLAD Weathered Zinc Mtl. Panel
11	PAC-CLAD Zinc Mtl. Panel
12	Pre-Finished Dark Bronze Mtl.
13	Cast Stone Band

NOTE:  
 1) ALL MATERIALS AND COLORS TO RETURN TO AN INSIDE CORNER.  
 2) ALL VINYL WINDOWS TO BE WHITE.  
 3) \*TO BE CONFIRMED



Downtown McKinney Block A&B  
 McKinney, TX



Facade Elevations



10.10.2016	2015034.00	ad
Copyright © JHP 2016 Not for Regulatory Approval, Permit or Construction: J. Mark Wolf, AIA Registered Architect of State of Texas, Registration No. 9129		



**Glazing % Calculations (Detail 01)**

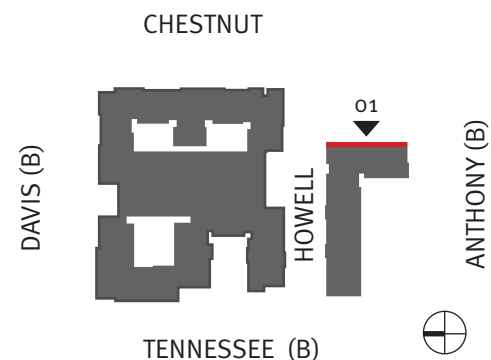
	Gross Sqft	Glazing Sqft	% Total	% Required
Facade	5227 Sqft	1858 Sqft	35%	30%

**COLOR KEY**

- 1 Heron Plume SW 6070 Stucco
- 2 Wool Skein SW 6148 Stucco
- 3 Mindful Gray SW 7016 Stucco
- 4 Porpoise SW 7047 Stucco
- 5 Anonymous SW 7046 Lap Siding
- 6 Acme Cinnebar Brick\*
- 7 Acme Red Sunset Brick\*
- 8 Acme Mushroom Gray Brick\*
- 9 Acme Ebony Brick\*
- 10 PAC-CLAD Weathered Zinc Mtl. Panel
- 11 PAC-CLAD Zinc Mtl. Panel
- 12 Pre-Finished Dark Bronze Mtl.
- 13 Cast Stone Band

**NOTE:**  
 1) ALL MATERIALS AND COLORS TO RETURN TO AN INSIDE CORNER.  
 2) ALL VINYL WINDOWS TO BE WHITE.  
 3) \*TO BE CONFIRMED

01 **BLOCK B EAST ELEVATION (CHESTNUT ST PARK)**

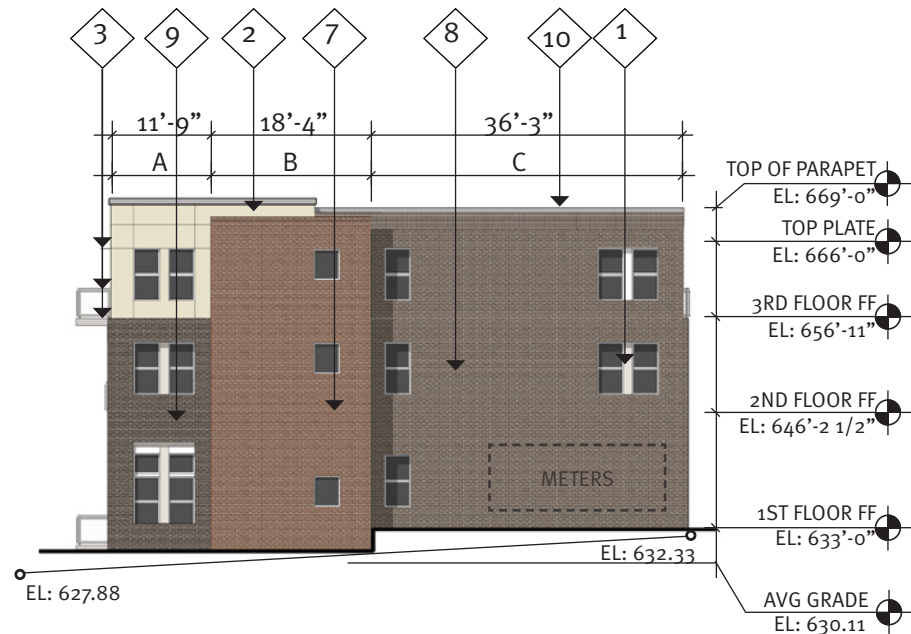


Downtown McKinney Block A&B  
 McKinney, TX

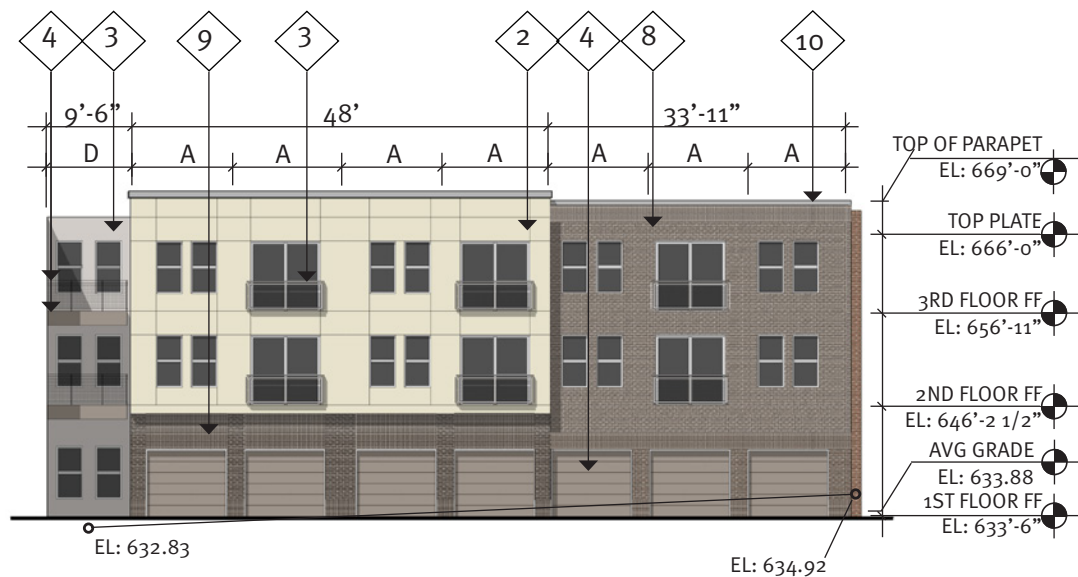


10.10.2016 2015034.00 ad

Copyright © JHP 2016  
 Not for Regulatory Approval, Permit or Construction: J. Mark Wolf, AIA  
 Registered Architect of State of Texas, Registration No. 9129



01 BLOCK B WEST ELEVATION (TENNESSEE ST)



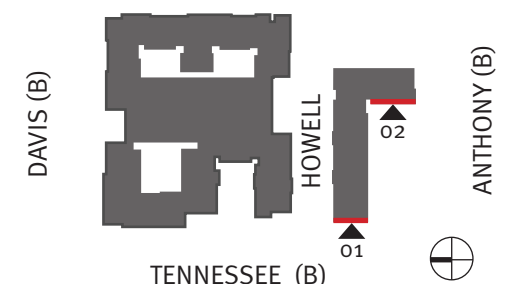
02 BLOCK B WEST ELEVATION

COLOR KEY		
1	[Color swatch]	Heron Plume SW 6070 Stucco
2	[Color swatch]	Wool Skein SW 6148 Stucco
3	[Color swatch]	Mindful Gray SW 7016 Stucco
4	[Color swatch]	Porpoise SW 7047 Stucco
5	[Color swatch]	Anonymous SW 7046 Lap Siding
6	[Color swatch]	Acme Cinnebar Brick*
7	[Color swatch]	Acme Red Sunset Brick*
8	[Color swatch]	Acme Mushroom Gray Brick*
9	[Color swatch]	Acme Ebony Brick*
10	[Color swatch]	PAC-CLAD Weathered Zinc Mtl. Panel
11	[Color swatch]	PAC-CLAD Zinc Mtl. Panel
12	[Color swatch]	Pre-Finished Dark Bronze Mtl.
13	[Color swatch]	Cast Stone Band

NOTE:  
 1) ALL MATERIALS AND COLORS TO RETURN TO AN INSIDE CORNER.  
 2) ALL VINYL WINDOWS TO BE WHITE.  
 3) \*TO BE CONFIRMED

Material % Calculations (Detail o1 + o2)		
	% Total	% Required
Brick	74%	80%
Cementitious Panel	26%	Not to Exceed 20%
Metal Panel	0%	

CHESTNUT



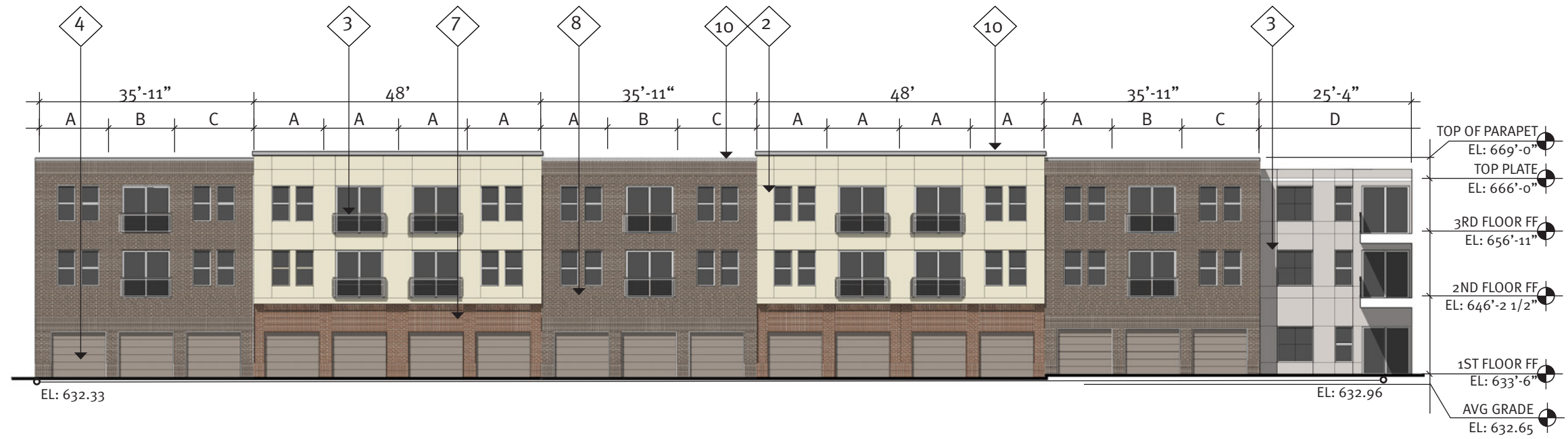
Downtown McKinney Block A&B  
 McKinney, TX



Facade Elevations



10.10.2016 2015034.00 ad  
 Copyright © JHP 2016  
 Not for Regulatory Approval, Permit or Construction: J. Mark Wolf, AIA  
 Registered Architect of State of Texas, Registration No. 9129

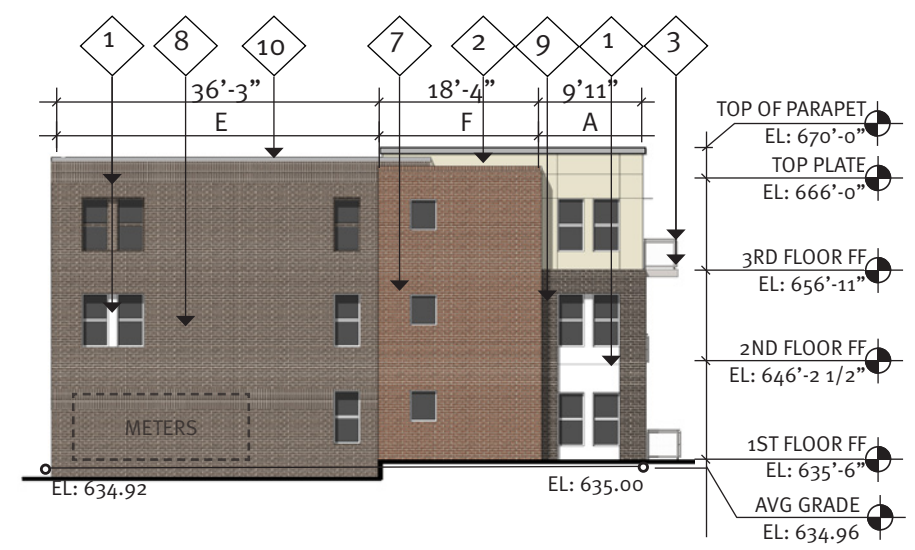


**COLOR KEY**

1	Heron Plume SW 6070 Stucco
2	Wool Skein SW 6148 Stucco
3	Mindful Gray SW 7016 Stucco
4	Porpoise SW 7047 Stucco
5	Anonymous SW 7046 Lap Siding
6	Acme Cinnebar Brick*
7	Acme Red Sunset Brick*
8	Acme Mushroom Gray Brick*
9	Acme Ebony Brick*
10	PAC-CLAD Weathered Zinc Mtl. Panel
11	PAC-CLAD Zinc Mtl. Panel
12	Pre-Finished Dark Bronze Mtl.
13	Cast Stone Band

NOTE:  
 1) ALL MATERIALS AND COLORS TO RETURN TO AN INSIDE CORNER.  
 2) ALL VINYL WINDOWS TO BE WHITE.  
 3) \*TO BE CONFIRMED

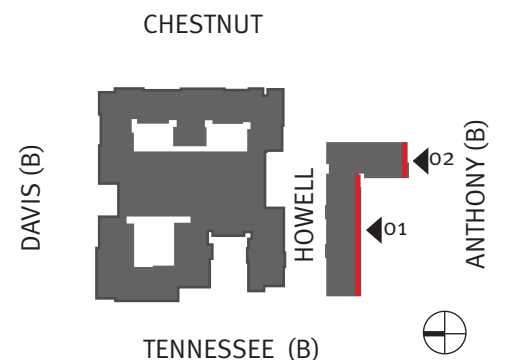
01 BLOCK B SOUTH ELEVATION



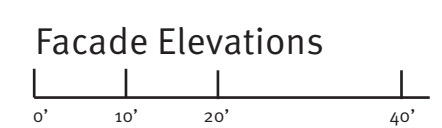
**Material % Calculations (Detail 01 + 02)**

	% Total	% Required
Brick	71%	80%
Cementitious Panel	29%	Not to Exceed 20%
Metal Panel	0%	Not to Exceed 20%

02 BLOCK B SOUTH ELEVATION (ANTHONY ST)



Downtown McKinney Block A&B  
 McKinney, TX



10.10.2016 2015034.00 ad

Copyright © JHP 2016  
 Not for Regulatory Approval, Permit or Construction: J. Mark Wolf, AIA  
 Registered Architect of State of Texas, Registration No. 9129



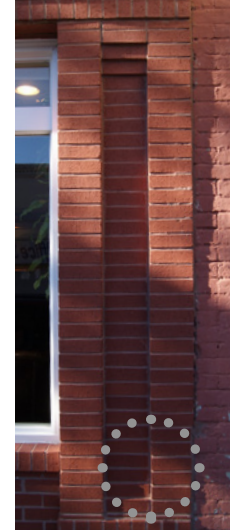
BRICK PARAPET DETAILING  
101 N Kentucky St



AWNINGS CUSTOMIZED TO RETAILER  
109 E Virginia St



FRAMED WINDOWS INSET IN BRICK  
107 W Louisiana St



BRICK PILASTER DETAILING  
103 E Virginia St



RETAIL SIGNAGE  
216 W Virginia St



BRICK PARAPET DETAILING  
214 N Kentucky St



INTERMEDIATE BANDING  
200 W Virginia St



INSET BRICK PANELS  
107 1/2 E. Virginia Parkway



DECORATIVE BRICK PANELS  
103 E Virginia St



GROUPED WINDOWS  
208 E Louisiana St



AWNINGS CUSTOMIZED TO RETAILER  
200 W Virginia St

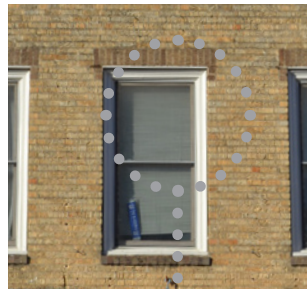




ARCHED WINDOW HEAD DETAILING  
228 E Louisiana St



BRICK PARAPET DETAILING  
214 N Kentucky St



EXPRESSED WINDOW HEAD  
103 E Virginia St

