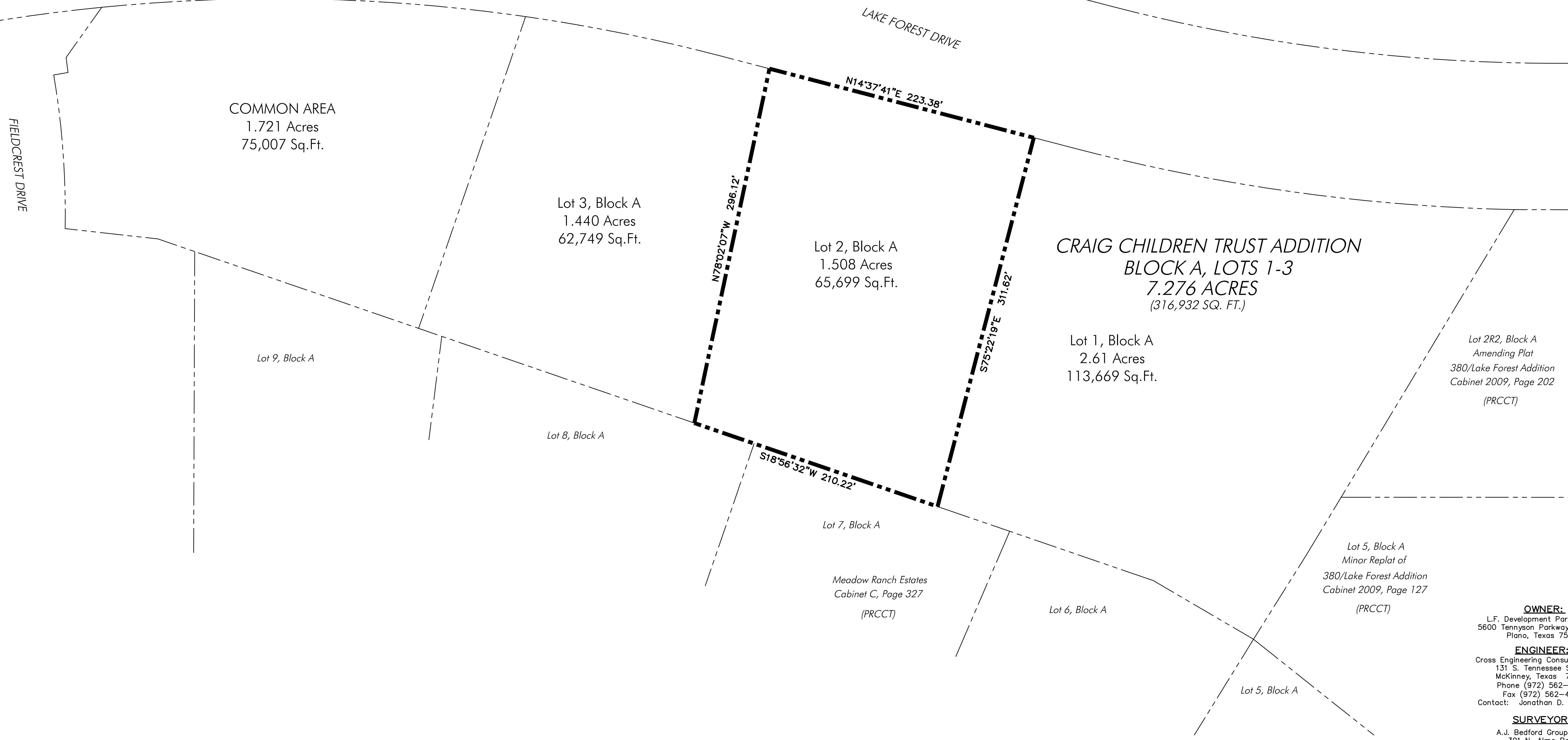
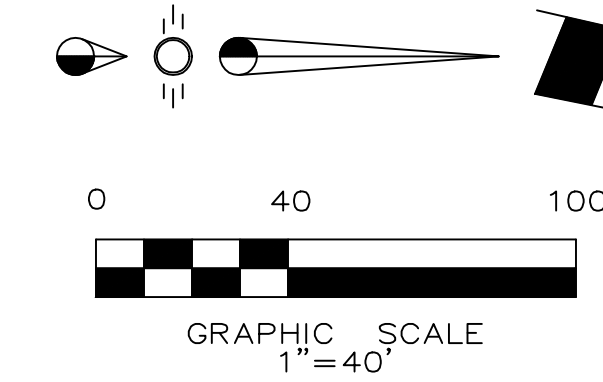
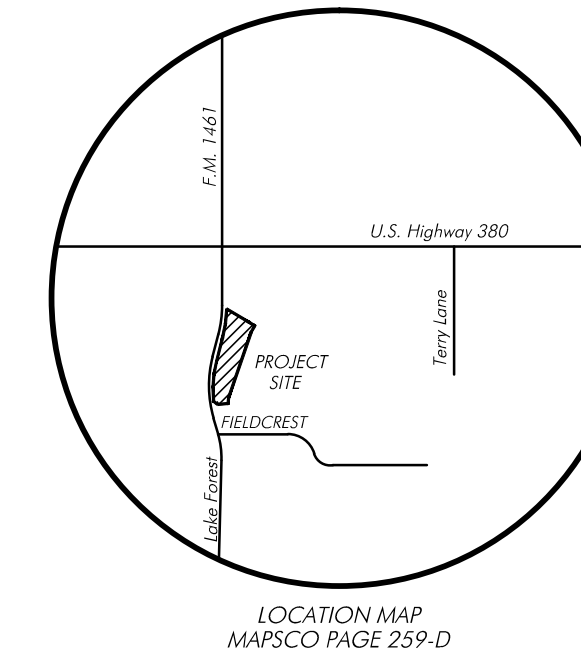


Exhibit B



COMMON AREA
1.721 Acres
75,007 Sq.Ft.

Lot 3, Block A
1.440 Acres
62,749 Sq.Ft.

Lot 2, Block A
1.508 Acres
65,699 Sq.Ft.

CRAIG CHILDREN TRUST ADDITION
BLOCK A, LOTS 1-3
7.276 ACRES
(316,932 SQ. FT.)

Lot 1, Block A
2.61 Acres
113,669 Sq.Ft.

Lot 2R2, Block A
Amending Plat
380/Lake Forest Addition
Cabinet 2009, Page 202
(PRCT)

Lot 9, Block A

Lot 8, Block A

S18°56'32"W 210.22'

Lot 7, Block A

Meadow Ranch Estates
Cabinet C, Page 327
(PRCT)

Lot 6, Block A

Lot 5, Block A

Lot 5, Block A
Minor Replat of
380/Lake Forest Addition
Cabinet 2009, Page 127
(PRCT)

BENCHMARK:
BM#1: Standard City of McKinney Monument Station No. CM17 is a 2" aluminum disc set 13 feet south of the south curb of Highway 380 near the west end of the 3rd Monday Trade Days location. Posted Elevation = 607.85'
BM#2: Box Cut In The Top Of Curb On A Storm Inlet On The West Side of Lake Forest Drive Approximately 90' North of The Intersection With Fieldcrest Drive Elevation = 590.20'

Issue Dates:	Revisions:	Date:
1	02/25/13	1
2	04/29/13	2
3		3
4		4
5		5
6		6

CROSS ENGINEERING CONSULTANTS		
131 S. Tennessee Street • McKinney, Texas 75069 972.562.4409 • Texas P.E. Firm No. F-5935		
Drawn By:	Checked By:	Scale:
B.J.	J.D.C.	1" = 40'

ZONING EXHIBIT	Sheet No.
Craig Brother's Trust	ZN
City of McKinney, Texas	Project No. 11037

ACCESS MANAGEMENT PLAN
CRAIG BROTHER'S TRUST