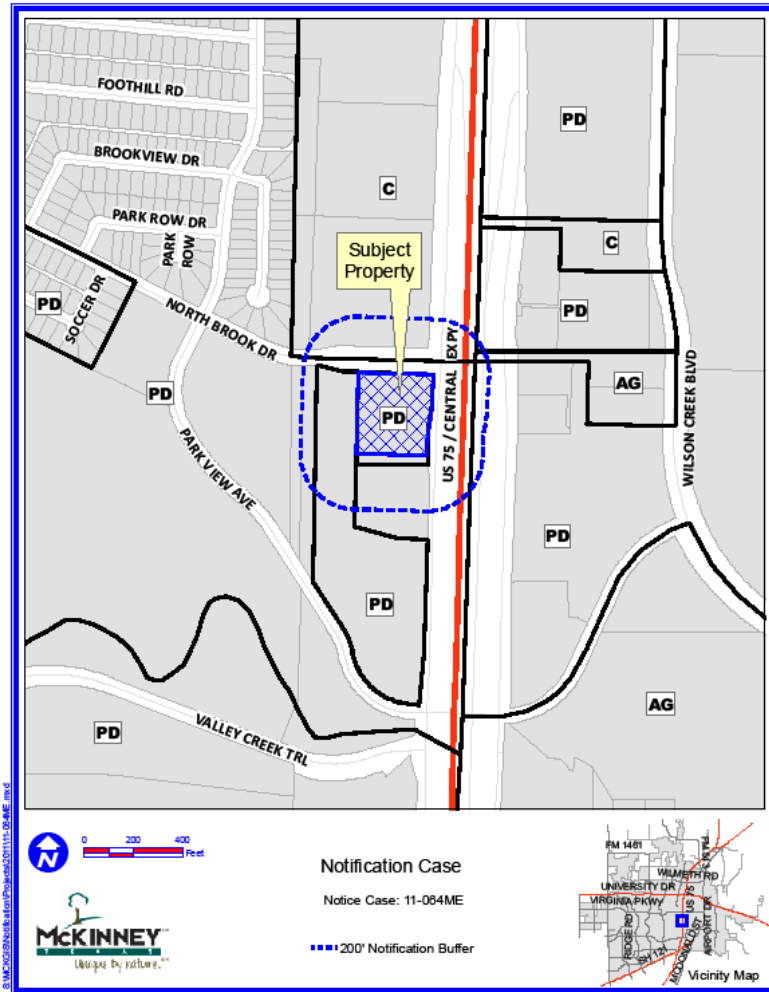


Case No. 11-064ME

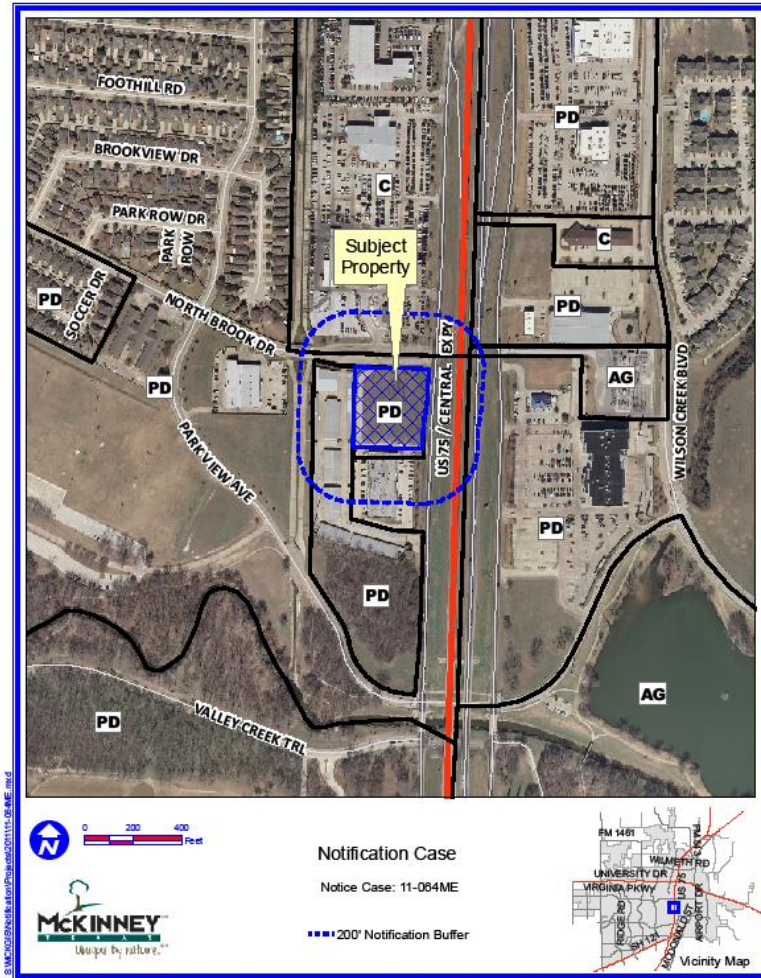
Conduct a Public Hearing to Consider/Discuss/Act on the Request by Bob Tomes Ford, on Behalf of Zerga Investments I, Ltd., for Approval of a Meritorious Exception for Brandon Tomes Subaru Dealership, Approximately 2.26 Acres, Located on the Southwest Corner of North Brook Drive and U.S. Highway 75 (Central Expressway).

Location Map



DISCLAIMER: This map and information contained in it were developed exclusively for use by the City of McKinney. Any use or reliance on this map by anyone else is at that party's risk and without liability to the City of McKinney, its officials or employees for any discrepancies, errors, or variances which may exist.

Aerial Exhibit



DISCLAIMER: This report and information contained in it were developed exclusively for use by the City of McKinney. Any use or reliance on this map by anyone else is at that party's risk and without liability to the City of McKinney, its officers or employees for any discrepancies, errors, or variances which may exist.

Proposed Elevations



01 EAST ELEVATION
SCALE: 1" = 1/8"



02 WEST ELEVATION
SCALE: 1" = 1/8"



03 SOUTH ELEVATION
SCALE: 1" = 1/8"



04 NORTH ELEVATION
SCALE: 1" = 1/8"

ELEVATION KEY

02/A-1
02/B-1

EAST ELEVATION

TOTAL WALL AREA	4780.63 SF
CURTAIN WALL AREA	275.32 SF
GLAZING AREA	263.29 SF (15%) OF TOTAL WALL AREA
SUB TOTAL	3855.87 SF

CRème BRICK VENEER	1977.84 SF	51%
LIGHT BROWN BRICK VENEER	643.32 SF	16%
SLATE TILE (BLUE/GREEN)	381.37 SF	10%
ALUMINUM COMPOSITE MATERIAL PANEL (ACM)	700.38 SF	18%
TOTAL MASONRY S.	875	

NOTE: FOR ALL NON RESIDENTIAL USES IN NON-INDUSTRIAL DISTRICTS AT LEAST 50% OF EACH WALL LESS THAN 24" SHALL BE COVERED WITH A MASONRY FINISH MATERIAL.

WEST ELEVATION

TOTAL WALL AREA	3400.83 SF
WINDOW AREA	86.50 SF
SUB TOTAL	3309

CRème BRICK VENEER	76	%
LIGHT BROWN BRICK VENEER	25	%
TOTAL MASONRY S.	100	%

NOTE: FOR ALL NON RESIDENTIAL USES IN NON-INDUSTRIAL DISTRICTS AT LEAST 50% OF EACH WALL LESS THAN 24" SHALL BE COVERED WITH A MASONRY FINISH MATERIAL.

NORTH ELEVATION

TOTAL WALL AREA	2084.07 SF
CURTAIN WALL AREA	862.70 SF (23.7%) OF TOTAL WALL AREA
GLAZING AREA	150
SUB TOTAL	2797.82 SF

CRème BRICK VENEER	1628.17 SF	58%
LIGHT BROWN BRICK VENEER	292.15 SF	10%
SLATE (BLUE/GREEN)	228.04 SF	8%
ALUMINUM COMPOSITE MATERIAL PANEL (ACM)	579.83 SF	21%
TOTAL MASONRY S.	875	

NOTE: FOR ALL NON RESIDENTIAL USES IN NON-INDUSTRIAL DISTRICTS AT LEAST 50% OF EACH WALL LESS THAN 24" SHALL BE COVERED WITH A MASONRY FINISH MATERIAL.

SOUTH ELEVATION

TOTAL WALL AREA	3709.9 SF
CURTAIN WALL AREA	241.3 SF
SUB TOTAL	3468.6 SF

CRème BRICK VENEER	313.34 SF	9%
LIGHT BROWN BRICK VENEER	209 SF	3.7%
SLATE (BLUE/GREEN)	209 SF	3.7%
ALUMINUM COMPOSITE MATERIAL PANEL (ACM)	1736.29 SF	49.6%
TOTAL MASONRY S.	875	

NOTE: FOR ALL NON RESIDENTIAL USES IN NON-INDUSTRIAL DISTRICTS AT LEAST 50% OF EACH WALL LESS THAN 24" SHALL BE COVERED WITH A MASONRY FINISH MATERIAL.

NEW DEALERSHIP FOR
 BRANCON TOMES SUBARU
 MCKINNEY, TX

McINTOSH
 ARCHITECTURE
 INC.

4400 West Loop South, Suite 400
 Dallas, Texas 75249
 972.244.0000



Project: 1104
 Date: 5/06/11
 Scale:
 Release Dates

Sheet Name
**EXTERIOR
 RENDERED
 ELEVATIONS**

Sheet Number
A-1

Staff Recommendation

- Staff recommends approval of the proposed meritorious exception as outlined in the Staff Report