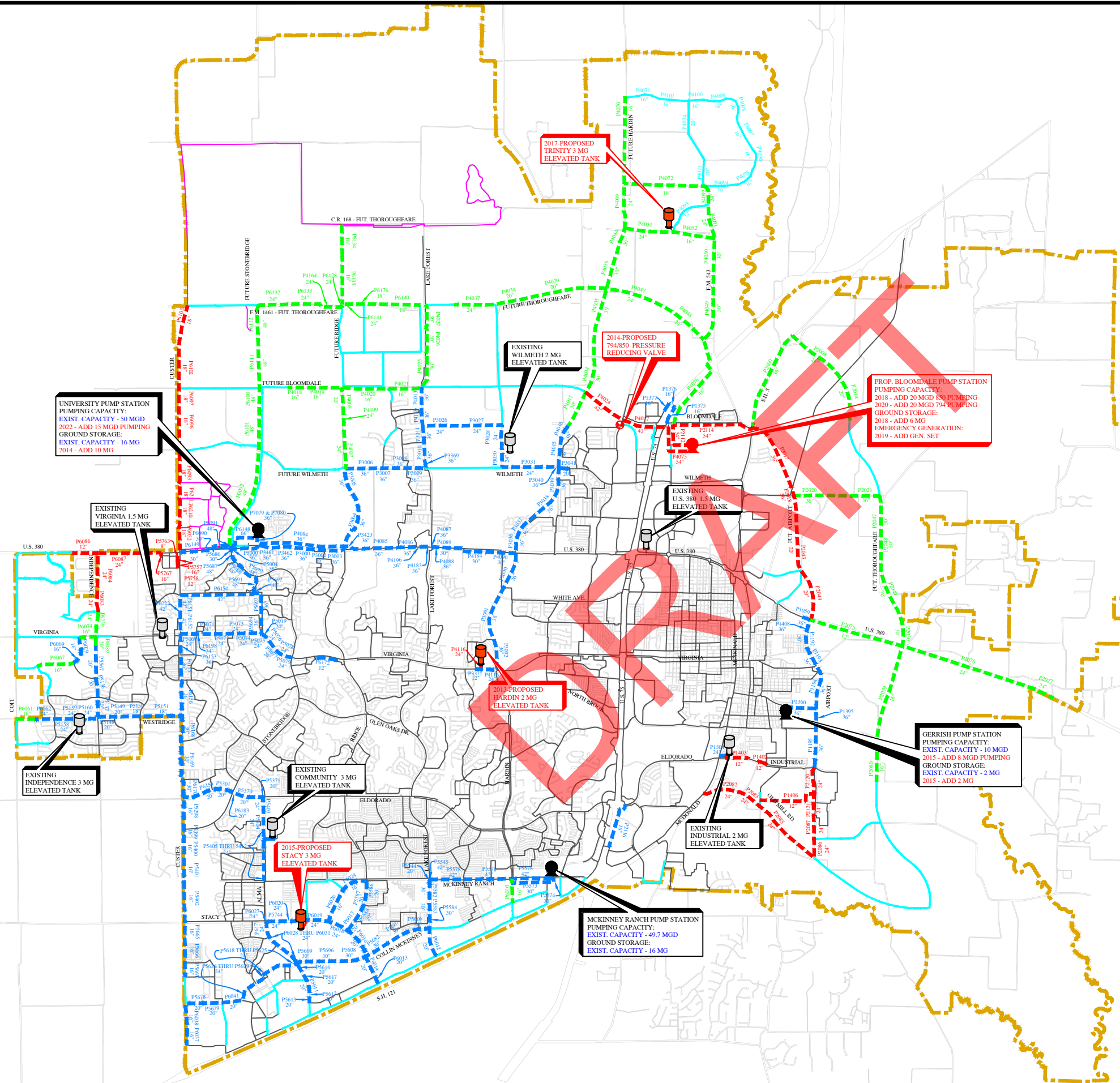
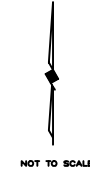




2012 - 2022 WATER IMPACT FEE 10-YEAR CAPITAL IMPROVEMENT PLAN

BIRKHOFF, HENDRICKS & CARTER, L.L.P.
CONSULTING ENGINEERS
Dallas, Texas
JUNE 2013



LEGEND

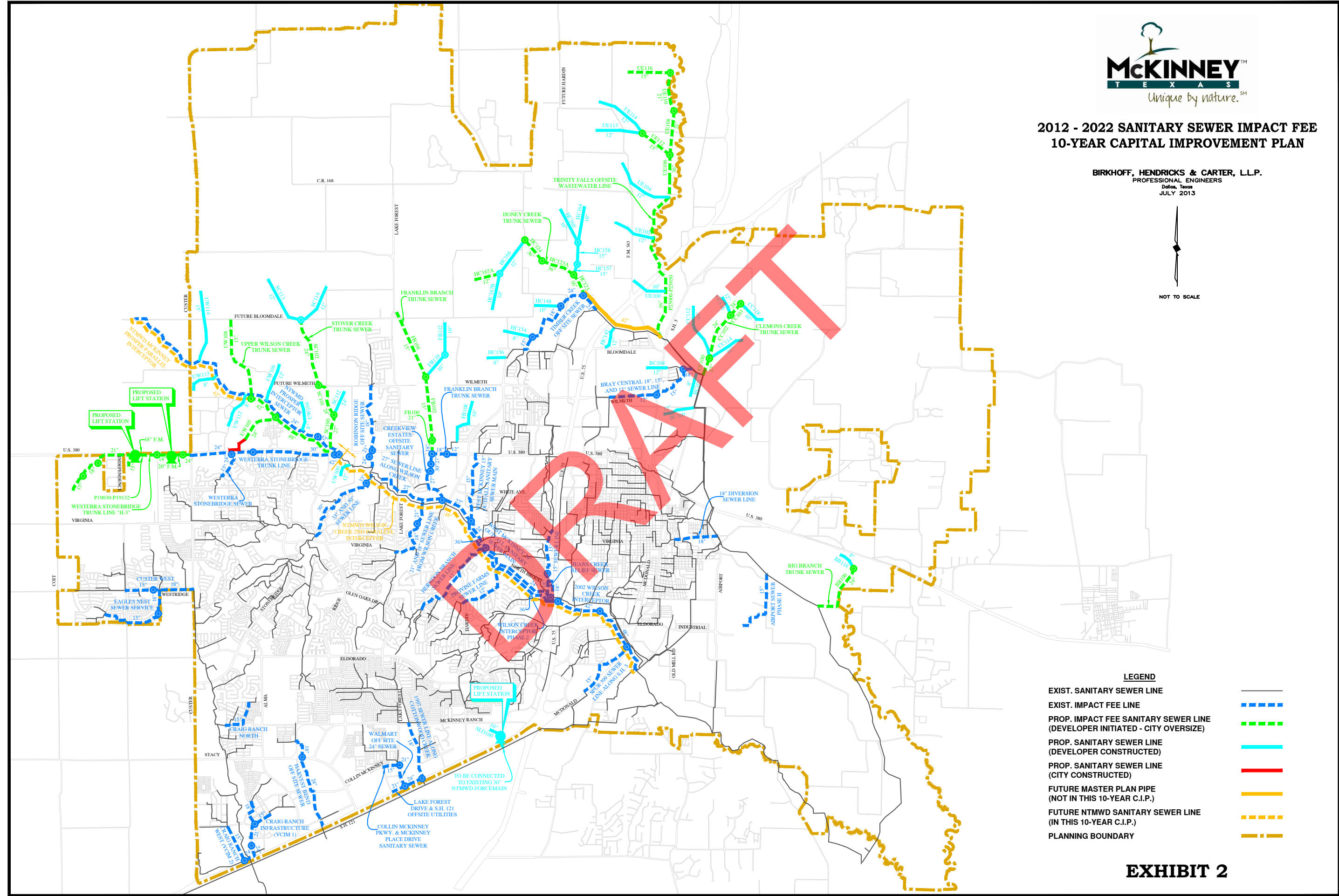
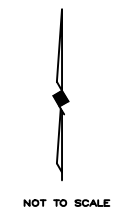
EXIST. WATER LINE	—
DANVILLE SYSTEM REMAINING IN 2022	—
EXIST. IMPACT FEE LINE	—
PROP. WATER LINE (DEVELOPER CONSTRUCTED 12-INCH UNLESS OTHERWISE NOTED)	—
PROP. IMPACT FEE WATER LINE (DEVELOPER INITIATED - CITY OVERSIZE)	—
PROPOSED IMPACT FEE WATER LINE (CITY INITIATED & CONSTRUCTED)	—
PLANNING BOUNDARY	—
EXISTING PUMP STATION	●
PROPOSED PUMP STATION	●
EXISTING ELEVATED STORAGE TANK	○
PROPOSED ELEVATED STORAGE TANK	○
PROPOSED PRESSURE REDUCING VALVE	⊗

EXHIBIT 1



**2012 - 2022 SANITARY SEWER IMPACT FEE
10-YEAR CAPITAL IMPROVEMENT PLAN**

BIRKHOFF, HENDRICKS & CARTER, L.L.P.
 PROFESSIONAL ENGINEERS
 Dallas, Texas
 JULY 2013



LEGEND

EXIST. SANITARY SEWER LINE	—
EXIST. IMPACT FEE LINE	- - -
PROP. IMPACT FEE SANITARY SEWER LINE (DEVELOPER INITIATED - CITY OVERSIZE)	- · - · -
PROP. SANITARY SEWER LINE (DEVELOPER CONSTRUCTED)	— (Cyan)
PROP. SANITARY SEWER LINE (CITY CONSTRUCTED)	— (Red)
FUTURE MASTER PLAN PIPE (NOT IN THIS 10-YEAR C.I.P.)	— (Yellow)
FUTURE NTMWD SANITARY SEWER LINE (IN THIS 10-YEAR C.I.P.)	- - - (Orange)
PLANNING BOUNDARY	- · - · - (Orange)

EXHIBIT 2