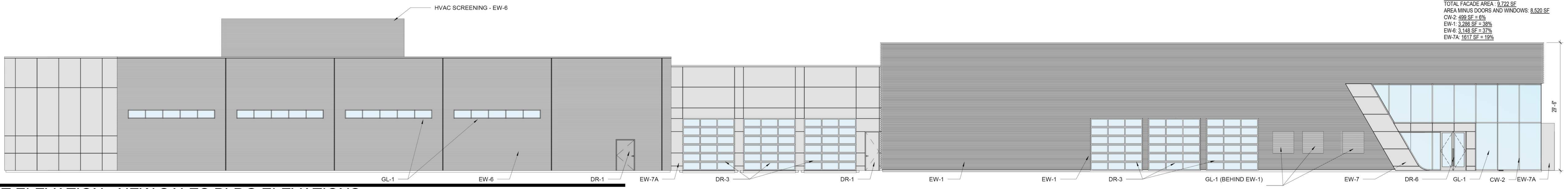
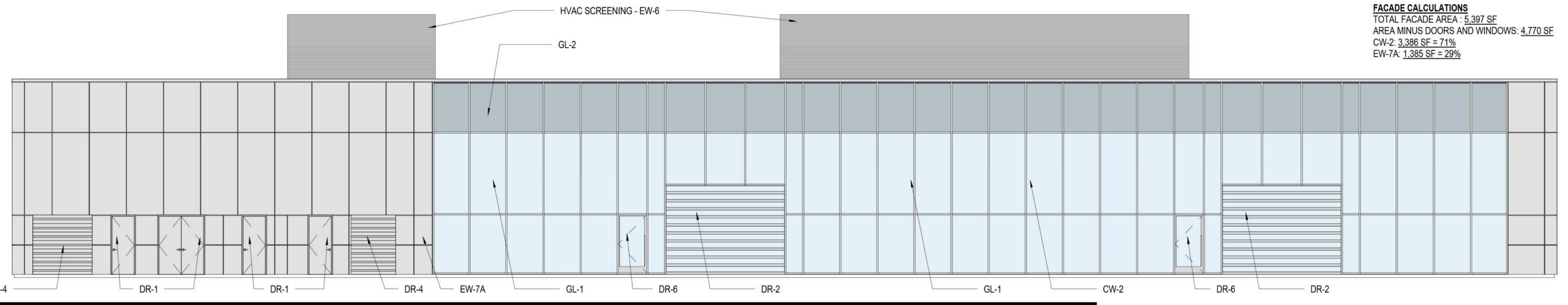


FACADE CALCULATIONS
 TOTAL FACADE AREA: 9,722 SF
 AREA MINUS DOORS AND WINDOWS: 8,520 SF
 CW-2: 499 SF = 5%



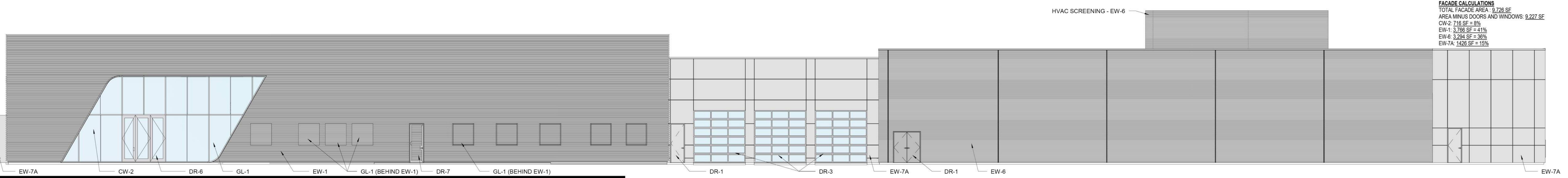
WEST ELEVATION - NEW SALES BLDG ELEVATIONS
 SCALE: 3/32" = 1'-0" **4**

FACADE CALCULATIONS
 TOTAL FACADE AREA: 5,397 SF
 AREA MINUS DOORS AND WINDOWS: 4,770 SF
 CW-2: 3,398 SF = 71%



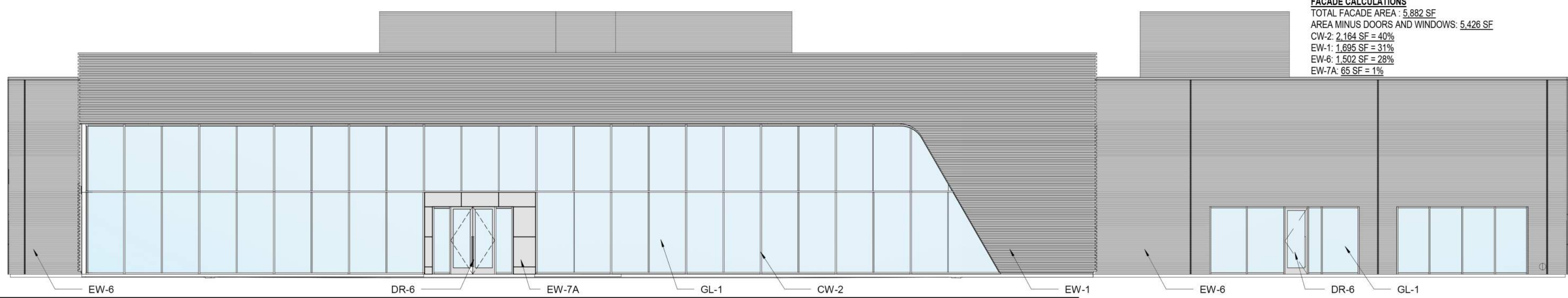
NORTH ELEVATION - NEW SALES BLDG ELEVATIONS
 SCALE: 3/32" = 1'-0" **3**

FACADE CALCULATIONS
 TOTAL FACADE AREA: 9,726 SF
 AREA MINUS DOORS AND WINDOWS: 9,227 SF
 CW-2: 716 SF = 9%



EAST ELEVATION - NEW SALES BLDG ELEVATIONS
 SCALE: 3/32" = 1'-0" **2**

FACADE CALCULATIONS
 TOTAL FACADE AREA: 5,592 SF
 AREA MINUS DOORS AND WINDOWS: 5,426 SF
 CW-2: 2,164 SF = 40%

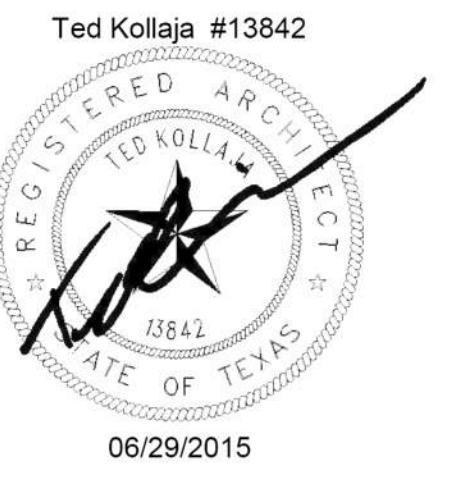


SOUTH ELEVATION - NEW SALES BLDG ELEVATIONS
 SCALE: 3/32" = 1'-0" **1**

- | | | | |
|-------|---|-------|---|
| GL-1 | INSULATED GLASS PANEL (11% VISIBLE LIGHT REFLECTANCE) SOLARBAN 60 ON LOW IRON GLASS | EW-17 | SOLAR SCREEN: FABRIC FINISH: GREY |
| GL-2 | INSULATED SPANDREL GLASS PANEL | EW-18 | STEEL STRUCTURE FINISH: HOT DIPPED GALVANIZED |
| CW-2 | CURTAIN WALL FRAMING CLEAR ANODIZED ALUMINUM | EW-19 | ALUMINUM LOUVER FINISH: GREY |
| EW-1 | PERFORATED CORRUGATED METAL PANEL SYSTEM CLEAR ANODIZED ALUMINUM | DR-1 | HOLLOW METAL DOOR BRUSHED STAINLESS STEEL CLAD |
| EW-6 | PREFINISHED CORRUGATED METAL PANEL SYSTEM FINISH: SILVERSMITH | DR-2 | HIGH SPEED ROLL UP DOOR CLEAR ANODIZED ALUMINUM FRAME WITH CLEAR PLASTIC PANELS |
| EW-7A | ALUMINUM COMPOSITE PANEL COLOR: SILVERSMITH | DR-3 | SECTIONAL OVERHEAD DOOR CLEAR ANODIZED ALUMINUM FRAME WITH CLEAR GLASS PANELS |
| EW-7B | ALUMINUM COMPOSITE PANEL COLOR: WHITE | DR-4 | COILING OVERHEAD DOOR GRAY BAKED ENAMEL FINISH |
| EW-9 | EXTERIOR PAINT COLOR: GRAY SHINGLE | DR-5 | COILING OVERHEAD DOOR GALVANIZED STEEL FINISH |
| EW-14 | MASONRY: SPLIT FACE CMU FINISH: GRAY GRANITE | DR-6 | STOREFRONT DOOR CLEAR ANODIZED ALUMINUM FINISH WITH CLEAR GLASS |
| EW-15 | MASONRY: SPLIT FACE CMU FINISH: SALT & PEPPER | DR-7 | HOLLOW METAL DOOR CLAD W/ CORRUGATED PERFORATED METAL PANEL OVERLAY FINISH: BRUSHED STAINLESS STEEL |
| EW-16 | STANDING SEAM METAL ROOF FINISH: BERRIDGE NATURAL WHITE | DR-8 | HOLLOW METAL DOOR FINISH: PAINT EW-7B |

NOTE: FACADE CALCULATIONS DO NOT INCLUDE HVAC SCREENING

EXTERIOR FINISH LIST
 SCALE: 6" = 1'-0"



As indicated

AUDI OF MCKINNEY

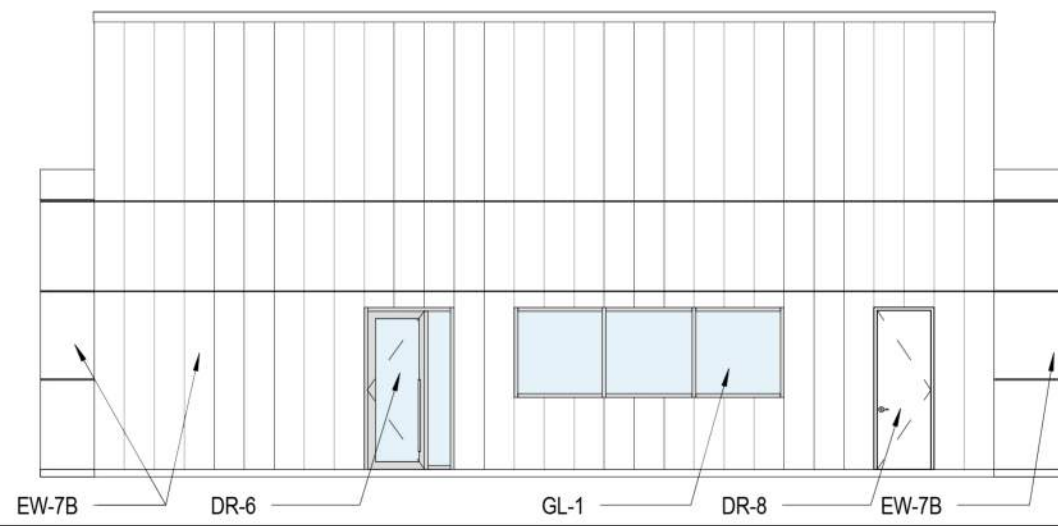
06/29/2015

Gensler

A02 - COLOR EXTERIOR ELEVATIONS - FACADE PLAN REVIEW

© 2015 Gensler

FACADE CALCULATIONS
 TOTAL FACADE AREA: 1,382 SF
 AREA MINUS DOORS AND WINDOWS: 1,232 SF
 EW-7B: 1,232 SF = 100%

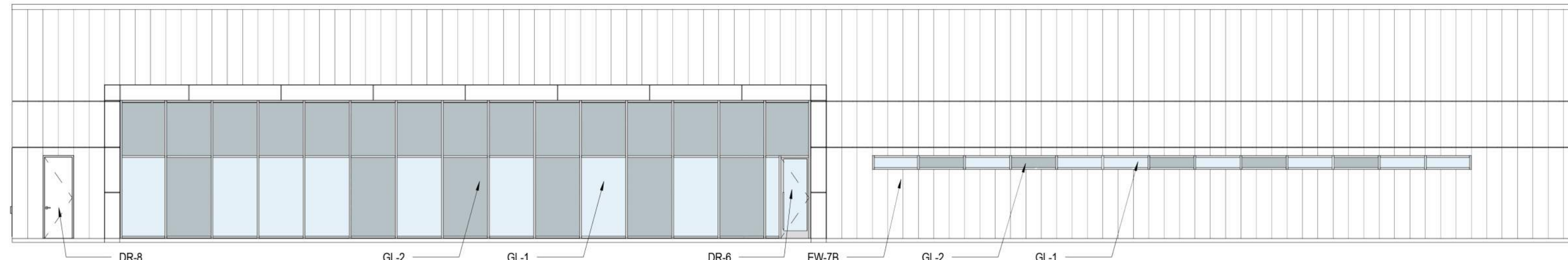


WEST ELEVATION - PREOWNED SALES BLDG ELEVATIONS

SCALE: 3/32" = 1'-0"

4

FACADE CALCULATIONS
 TOTAL FACADE AREA: 4,322 SF
 AREA MINUS DOORS AND WINDOWS: 4,195 SF
 CW-1: 1,125 SF = 27%
 EW-7B: 3,069 SF = 73%

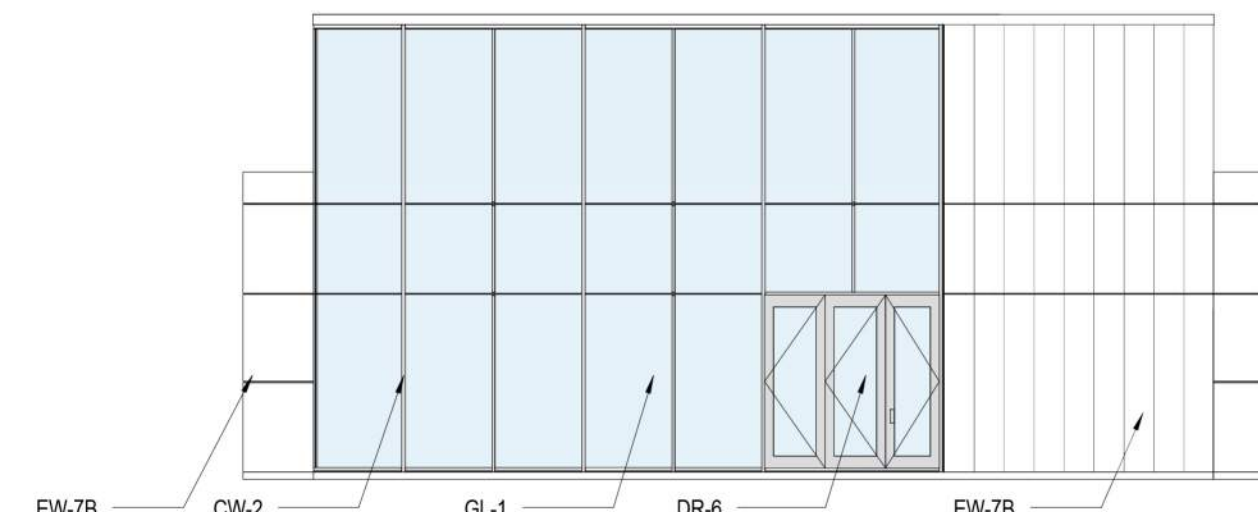


NORTH ELEVATION - PREOWNED SALES BLDG ELEVATIONS

SCALE: 3/32" = 1'-0"

3

FACADE CALCULATIONS
 TOTAL FACADE AREA: 1,351 SF
 AREA MINUS DOORS AND WINDOWS: 1,351 SF
 EW-7B: 481 SF = 36%
 CW-2: 870 SF = 64%

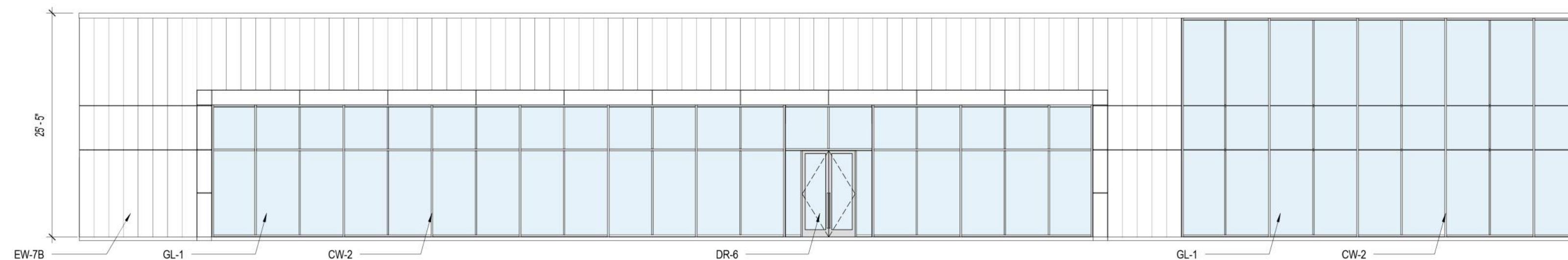


EAST ELEVATION - PREOWNED SALES BLDG ELEVATIONS

SCALE: 3/32" = 1'-0"

2

FACADE CALCULATIONS
 TOTAL FACADE AREA: 4,322 SF
 AREA MINUS DOORS AND WINDOWS: 4,322 SF
 EW-7B: 1,704 SF = 39%
 CW-2: 2,618 SF = 61%



SOUTH ELEVATION - PREOWNED SALES BLDG ELEVATIONS

SCALE: 3/32" = 1'-0"

1

GL-1	INSULATED GLASS PANEL (11% VISIBLE LIGHT REFLECTANCE) SOLARBAN 60 ON LOW IRON GLASS	EW-17	SOLAR SCREEN: FABRIC FINISH: GREY
GL-2	INSULATED SPANDREL GLASS PANEL	EW-18	STEEL STRUCTURE FINISH: HOT DIPPED GALVANIZED
CW-2	CURTAIN WALL FRAMING CLEAR ANODIZED ALUMINUM	EW-19	ALUMINUM LOUVER FINISH: GREY
EW-1	PERFORATED CORRUGATED METAL PANEL SYSTEM CLEAR ANODIZED ALUMINUM	DR-1	HOLLOW METAL DOOR BRUSHED STAINLESS STEEL CLAD
EW-6	PREFINISHED CORRUGATED METAL PANEL SYSTEM FINISH: SILVERSMITH	DR-2	HIGH SPEED ROLL UP DOOR CLEAR ANODIZED ALUMINUM FRAME WITH CLEAR PLASTIC PANELS
EW-7A	ALUMINUM COMPOSITE PANEL COLOR: SILVERSMITH	DR-3	SECTIONAL OVERHEAD DOOR CLEAR ANODIZED ALUMINUM FRAME WITH CLEAR GLASS PANELS
EW-7B	ALUMINUM COMPOSITE PANEL COLOR: WHITE	DR-4	COILING OVERHEAD DOOR GRAY BAKED ENAMEL FINISH
EW-9	EXTERIOR PAINT COLOR: GRAY SHINGLE	DR-5	COILING OVERHEAD DOOR GALVANIZED STEEL FINISH
EW-14	MASONRY: SPLIT FACE CMU FINISH: GRAY GRANITE	DR-6	STOREFRONT DOOR CLEAR ANODIZED ALUMINUM FINISH WITH CLEAR GLASS
EW-15	MASONRY: SPLIT FACE CMU FINISH: SALT & PEPPER	DR-7	HOLLOW METAL DOOR CLAD W/ CORRUGATED PERFORATED METAL PANEL OVERLAY FINISH: BRUSHED STAINLESS STEEL
EW-16	STANDING SEAM METAL ROOF FINISH: BERRIDGE NATURAL WHITE	DR-8	HOLLOW METAL DOOR FINISH: PAINT EW-7B

EXTERIOR FINISH LIST

SCALE: 6" = 1'-0"

As indicated

Gensler

AUDI OF MCKINNEY

A03 - COLOR EXTERIOR ELEVATIONS - FACADE PLAN REVIEW

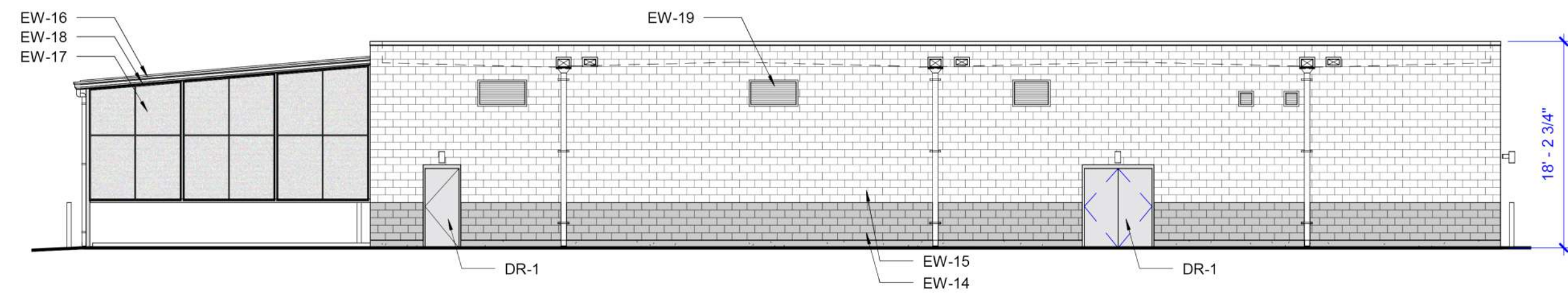
Ted Kollaja #13842



06/29/2015

06/29/2015

© 2015 Gensler

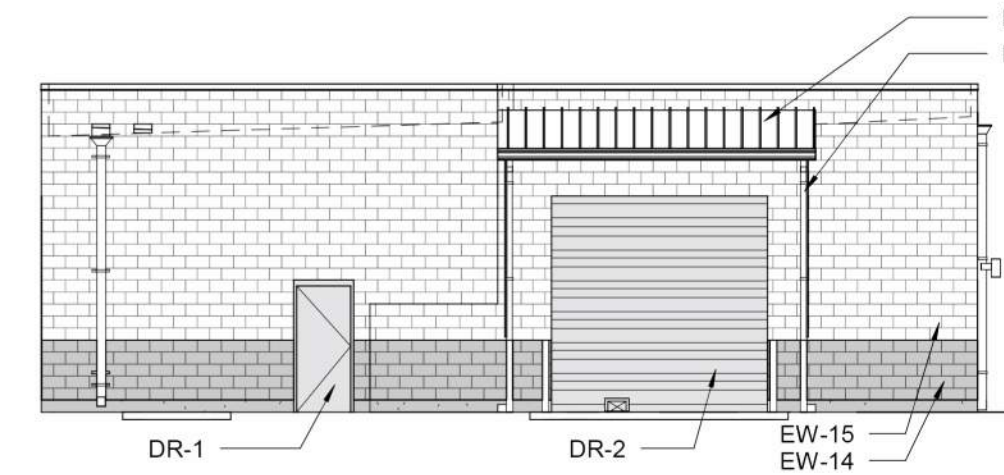


FACADE CALCULATIONS
 TOTAL FACADE AREA : 2132 SF
 AREA MINUS DOORS AND WINDOWS: 2081 SF
 EW-14: 301 SF = 15%
 EW-15: 1422 SF = 69%
 EW-16: 17 SF = 1%
 EW-17: 265 SF = 13%
 EW-18: 24 SF = 1%
 EW-119: 32 SF = 1%

NORTH ELEVATION - CARWASH BLDG ELEVATIONS

SCALE: 3/32" = 1'-0"

7

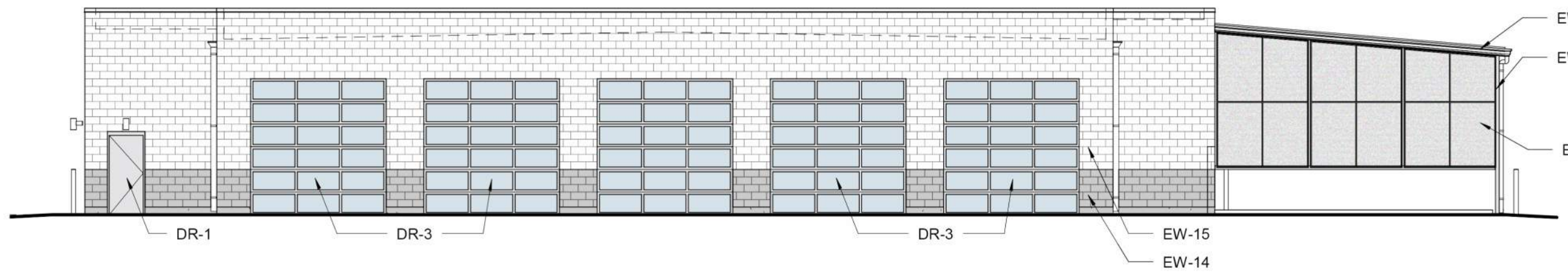


FACADE CALCULATIONS
 TOTAL FACADE AREA : 949 SF
 AREA MINUS DOORS AND WINDOWS: 581 SF
 EW-14: 122 SF = 21%
 EW-15: 401 SF = 69%
 EW-16: 49 SF = 8%
 EW-18: 9 SF = 2%

EAST ELEVATION - CARWASH BLDG ELEVATIONS

SCALE: 3/32" = 1'-0"

8

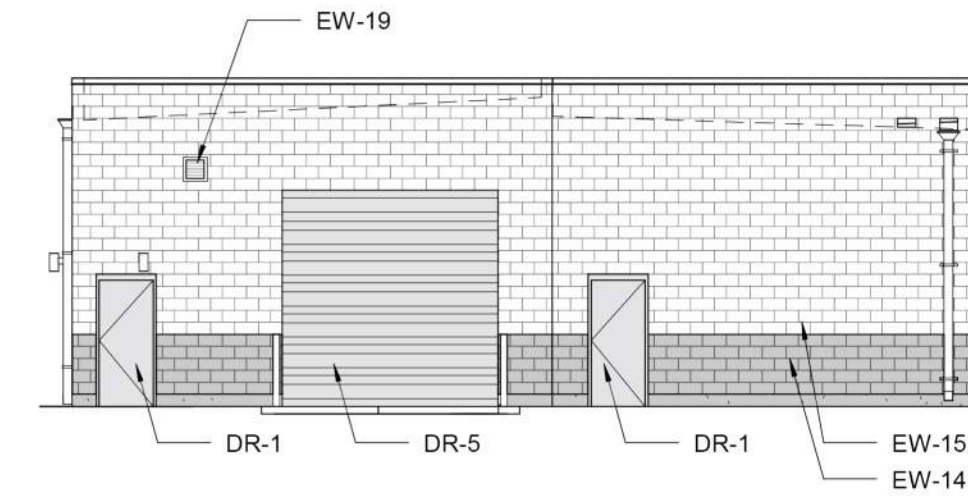


FACADE CALCULATIONS
 TOTAL FACADE AREA : 2132 SF
 AREA MINUS DOORS AND WINDOWS: 1499 SF
 EW-14: 122 SF = 9%
 EW-16: 1071 SF = 71%
 EW-17: 17 SF = 1%
 EW-18: 265 SF = 18%
 EW-19: 24 SF = 1%

SOUTH ELEVATION - CARWASH BLDG ELEVATIONS

SCALE: 3/32" = 1'-0"

5

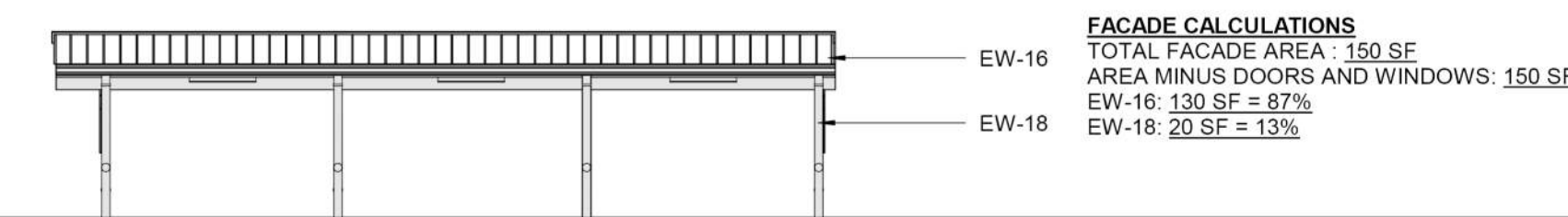


FACADE CALCULATIONS
 TOTAL FACADE AREA : 949 SF
 AREA MINUS DOORS AND WINDOWS: 756 SF
 EW-14: 111 SF = 14.75%
 EW-15: 643 SF = 85%
 EW-19: 2 SF = .25%

WEST ELEVATION - CARWASH BLDG ELEVATIONS

SCALE: 3/32" = 1'-0"

6

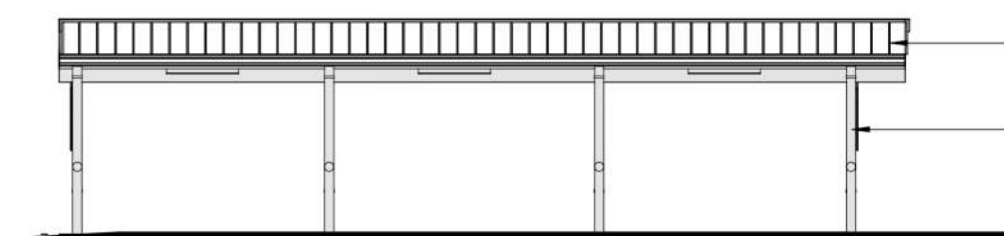


FACADE CALCULATIONS
 TOTAL FACADE AREA : 150 SF
 AREA MINUS DOORS AND WINDOWS: 150 SF
 EW-16: 130 SF = 87%
 EW-18: 20 SF = 13%

EAST ELEVATION - VACUUM CANOPY1

SCALE: 3/32" = 1'-0"

3

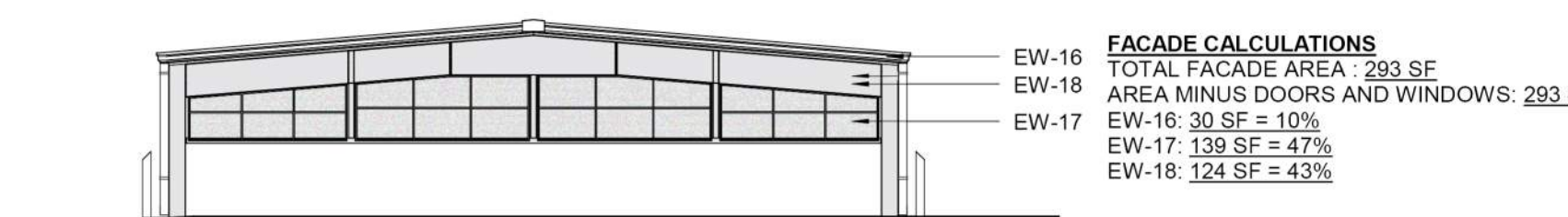


FACADE CALCULATIONS
 TOTAL FACADE AREA : 150 SF
 AREA MINUS DOORS AND WINDOWS: 150 SF
 EW-16: 130 SF = 87%
 EW-18: 20 SF = 13%

WEST ELEVATION - VACUUM CANOPY

SCALE: 3/32" = 1'-0"

4

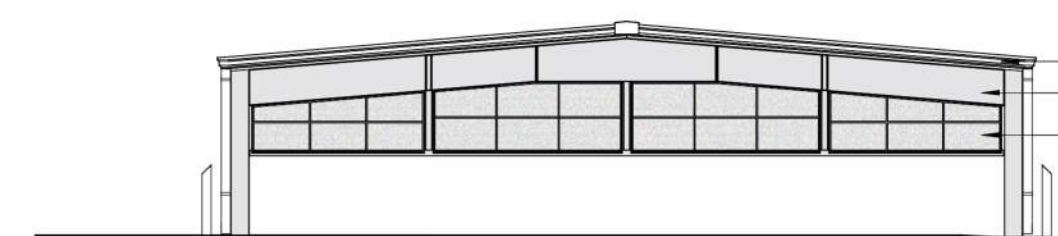


FACADE CALCULATIONS
 TOTAL FACADE AREA : 293 SF
 AREA MINUS DOORS AND WINDOWS: 293 SF
 EW-16: 30 SF = 10%
 EW-17: 139 SF = 47%
 EW-18: 124 SF = 43%

SOUTH ELEVATION - VACUUM CANOPY

SCALE: 3/32" = 1'-0"

1



FACADE CALCULATIONS
 TOTAL FACADE AREA : 293 SF
 AREA MINUS DOORS AND WINDOWS: 293 SF
 EW-16: 30 SF = 10%
 EW-17: 139 SF = 47%
 EW-18: 124 SF = 43%

NORTH ELEVATION - VACUUM CANOPY

SCALE: 3/32" = 1'-0"

2

- GL-1 INSULATED GLASS PANEL (11% VISIBLE LIGHT REFLECTANCE)
SOLARBAN 60 ON LOW IRON GLASS
- GL-2 INSULATED SPANDREL GLASS PANEL
- CW-2 CURTAIN WALL FRAMING
CLEAR ANODIZED ALUMINUM
- EW-1 PERFORATED CORRUGATED METAL PANEL SYSTEM
CLEAR ANODIZED ALUMINUM
- EW-6 PREFINISHED CORRUGATED METAL PANEL SYSTEM
FINISH: SILVERSMITH
- EW-7A ALUMINUM COMPOSITE PANEL
COLOR: SILVERSMITH
- EW-7B ALUMINUM COMPOSITE PANEL
COLOR: WHITE
- EW-9 EXTERIOR PAINT
COLOR: GRAY SHINGLE
- EW-14 MASONRY: SPLIT FACE CMU
FINISH: GRAY GRANITE
- EW-15 MASONRY: SPLIT FACE CMU
FINISH: SALT & PEPPER
- EW-16 STANDING SEAM METAL ROOF
FINISH: BERRIDGE NATURAL WHITE
- EW-17 SOLAR SCREEN: FABRIC
FINISH: GREY
- EW-18 STEEL STRUCTURE
FINISH: HOT DIPPED GALVANIZED
- EW-19 ALUMINUM LOUVER
FINISH: GREY
- DR-1 HOLLOW METAL DOOR
BRUSHED STAINLESS STEEL CLAD
- DR-2 HIGH SPEED ROLL UP DOOR
CLEAR ANODIZED ALUMINUM FRAME WITH CLEAR PLASTIC PANELS
- DR-3 SECTIONAL OVERHEAD DOOR
CLEAR ANODIZED ALUMINUM FRAME WITH CLEAR GLASS PANELS
- DR-4 COILING OVERHEAD DOOR
GRAY BAKED ENAMEL FINISH
- DR-5 COILING OVERHEAD DOOR
GALVANIZED STEEL FINISH
- DR-6 STOREFRONT DOOR
CLEAR ANODIZED ALUMINUM FINISH WITH CLEAR GLASS
- DR-7 HOLLOW METAL DOOR CLAD W/ CORRUGATED PERFORATED METAL PANEL OVERLAY
FINISH: BRUSHED STAINLESS STEEL
- DR-8 HOLLOW METAL DOOR
FINISH: PAINT EW-7B

EXTERIOR FINISH LIST

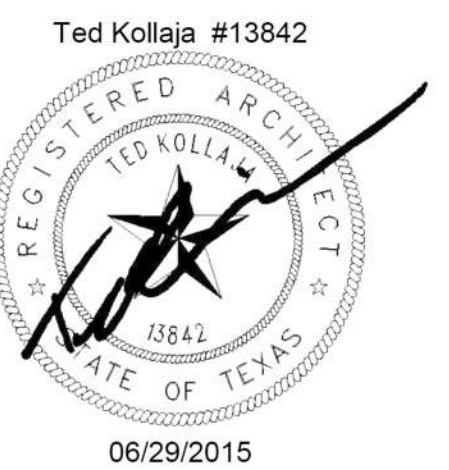
SCALE: 6" = 1'-0"

As indicated

Gensler

AUDI of McKinney

A04 - COLOR EXTERIOR ELEVATIONS - FACADE PLAN REVIEW



06/29/2015

06/29/2015