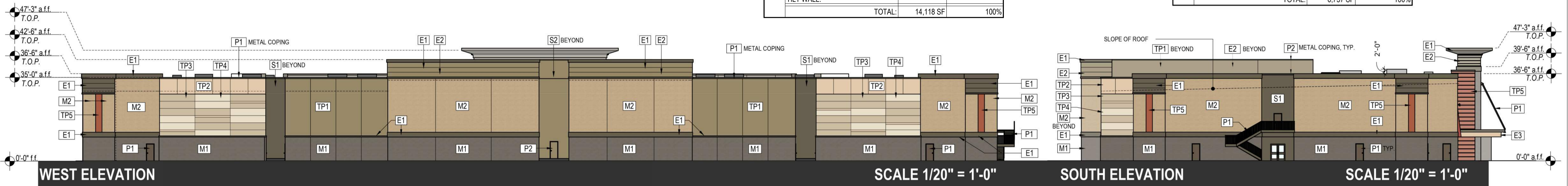


**EAST FACADE MATERIAL AREAS & PERCENTAGES:**

	AREA (SF)	PERCENTAGE
BRICK VENEER:	7,269 SF	52%
EIFS:	1,985 SF	14%
STUCCO:	480 SF	3%
CURTAIN WALL:	929 SF	7%
ARCHITECTURALLY FINISHED TILT WALL:	3,455 SF	24%
<b>TOTAL:</b>	<b>14,118 SF</b>	<b>100%</b>

**NORTH FACADE MATERIAL AREAS & PERCENTAGES:**

	AREA (SF)	PERCENTAGE
BRICK VENEER:	4,427 SF	66%
EIFS:	844 SF	12%
STUCCO:	410 SF	6%
ARCHITECTURALLY FINISHED TILT WALL:	1,066 SF	16%
<b>TOTAL:</b>	<b>6,737 SF</b>	<b>100%</b>

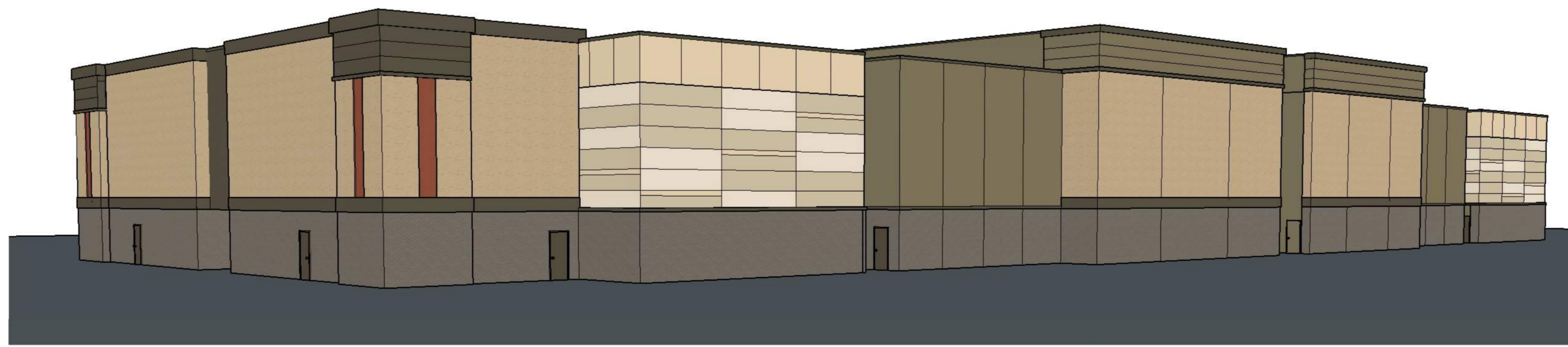


**WEST FACADE MATERIAL AREAS & PERCENTAGES:**

	AREA (SF)	PERCENTAGE
BRICK VENEER:	7,482 SF	52%
EIFS:	1,634 SF	11%
STUCCO:	1,065 SF	8%
ARCHITECTURALLY FINISHED TILT WALL:	4,276 SF	29%
<b>TOTAL:</b>	<b>14,457 SF</b>	<b>100%</b>

**SOUTH FACADE MATERIAL AREAS & PERCENTAGES:**

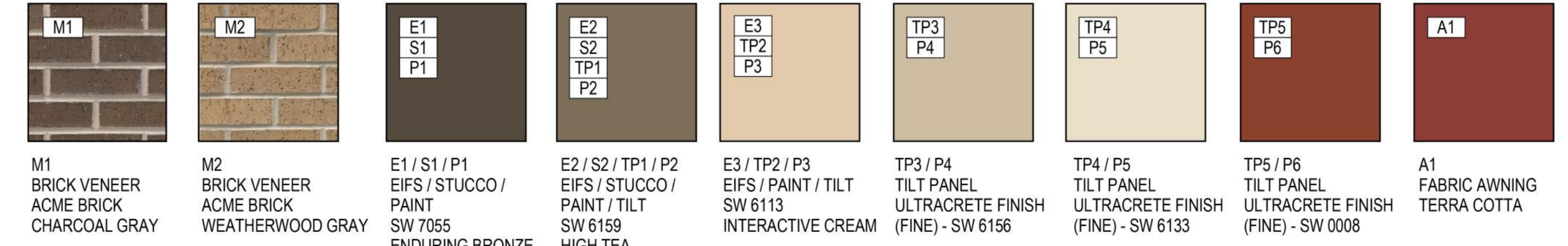
	AREA (SF)	PERCENTAGE
BRICK VENEER:	4,427 SF	66%
EIFS:	844 SF	12%
STUCCO:	410 SF	6%
ARCHITECTURALLY FINISHED TILT WALL:	1,066 SF	16%
<b>TOTAL:</b>	<b>6,737 SF</b>	<b>100%</b>



**ELEVATION KEY**

<b>P1</b> SW 7055 ENDURING BRONZE	<b>M1</b> BRICK VENEER: CHARCOAL GRAY (RUNNING BOND)	<b>L1</b> DECORATIVE LIGHTING SCENCE
<b>P2</b> SW 6159 HIGH TEA	<b>M2</b> BRICK VENEER: WEATHERWOOD GRAY (RUNNING BOND)	<b>TP1</b> ARCHITECTURALLY FINISHED TILT WALL: SHERWIN WILLIAMS ULTRACRETE - FINE (SW 6159)
<b>P3</b> SW 6113 INTERACTIVE CREAM	<b>E1</b> P1 PAINTED EIFS	<b>TP2</b> ARCHITECTURALLY FINISHED TILT WALL: SHERWIN WILLIAMS ULTRACRETE - FINE (SW 6113)
<b>P4</b> SW 6156 RAMIE	<b>E2</b> P2 PAINTED EIFS	<b>TP3</b> ARCHITECTURALLY FINISHED TILT WALL: SHERWIN WILLIAMS ULTRACRETE - FINE (SW 6156)
<b>P5</b> SW 6133 MUSLIN	<b>E3</b> P3 PAINTED EIFS	<b>TP4</b> ARCHITECTURALLY FINISHED TILT WALL: SHERWIN WILLIAMS ULTRACRETE - FINE (SW 6133)
<b>P6</b> SW 0008 CAJUN RED	<b>GL1</b> GLAZING CLEAR	<b>TP5</b> ARCHITECTURALLY FINISHED TILT WALL: SHERWIN WILLIAMS ULTRACRETE - FINE (SW 0008)
<b>S1</b> P1 PAINTED STUCCO	<b>GL2</b> GLAZING WHITE SPANDREL	
<b>S2</b> P2 PAINTED STUCCO	<b>A1</b> AWNING FABRIC: SUNBRELLA - TERRA COTTA	

NOTES:  
- EXTERIOR METAL DOORS TO BE PAINTED P1, P2 OR P6 TO MATCH ADJACENT FACE  
- ALL GLAZING TO BE "SOLARBAN 60 (2) SOLARGRAY + CLEAR" - VISIBLE LIGHT REFLECTANCE OF 6%  
- ALL EXPOSED TILT PANELS TO RECEIVE SHERWIN WILLIAMS "ULTRA CRETE FINE TEXTURE" TOP COAT (SIMILAR IN FINISH TO EIFS)



**ARCHITECT**  
 BECK ARCHITECTURE, LLC  
 1807 ROSS AVE. SUITE 500  
 DALLAS, TX 75201  
 214.303.6200  
 ATTN. SCOTT SOMERVILLE

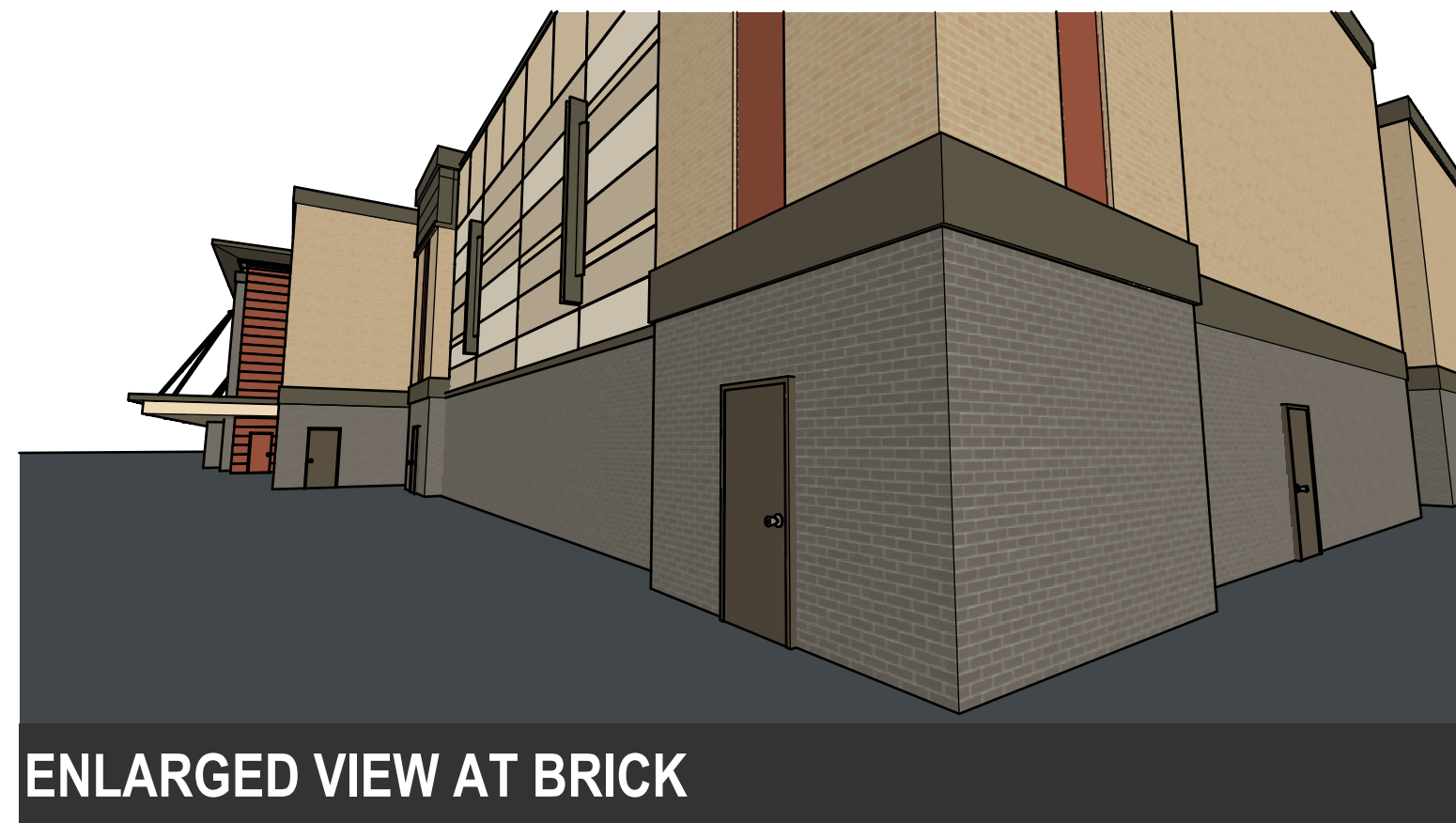
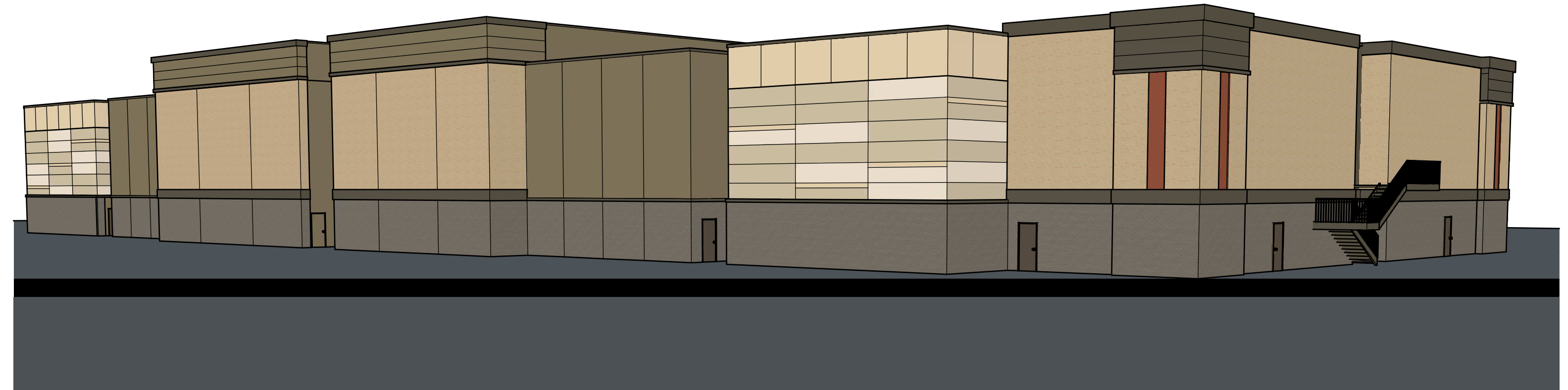
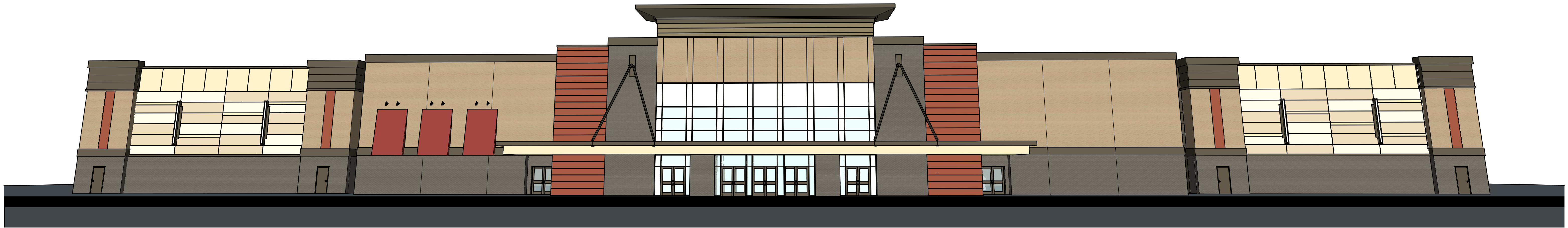
**DEVELOPER**  
 THE SEITZ GROUP  
 1110 COWAN RD.  
 CELINA, TX 75009

**CLIENT**  
 CINEMARK USA, INC  
 3900 DALLAS PARKWAY  
 PLANO, TX 75093  
 972.665.1100  
 ATTN. DON HARTON

**PROJECT**  
 CUSA MCKINNEY XD14  
 PROJECT NO.  
 170889.50

**ISSUE**  
 10.26.17

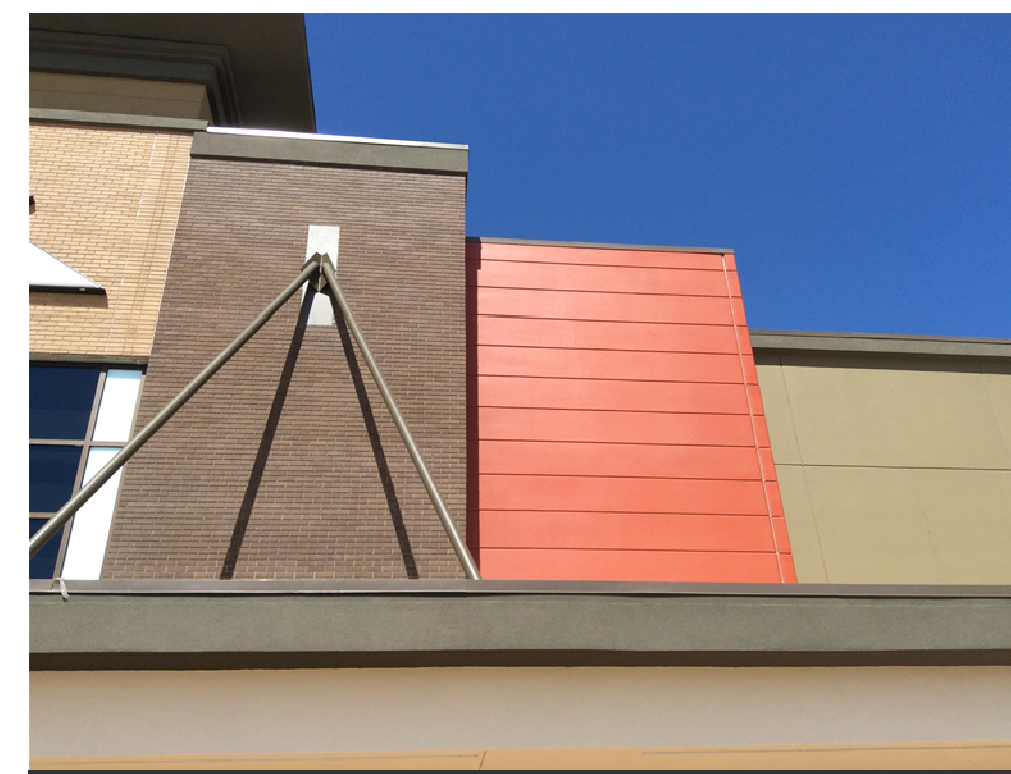
**LOCATION**  
 MCKINNEY, TX



ENLARGED VIEW AT BRICK



ARCHITECTURALLY FINISHED TILT WALL EXAMPLES



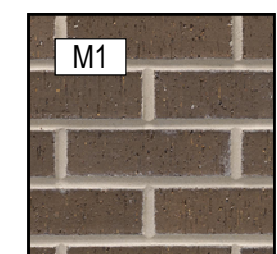
PREVIOUSLY EXECUTED WORK OF SIMILAR DESIGN



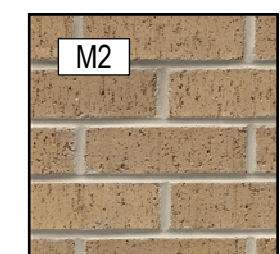
**ELEVATION KEY**

<b>P1</b>	SW 7055 ENDURING BRONZE	<b>M1</b>	BRICK VENEER: CHARCOAL GRAY (RUNNING BOND)	<b>L1</b>	DECORATIVE LIGHTING SCENCE
<b>P2</b>	SW 6159 HIGH TEA	<b>M2</b>	BRICK VENEER: WEATHERWOOD GRAY (RUNNING BOND)	<b>TP1</b>	ARCHITECTURALLY FINISHED TILT WALL: SHERWIN WILLIAMS ULTRACRETE - FINE (SW 6159)
<b>P3</b>	SW 6113 INTERACTIVE CREAM	<b>E1</b>	P1 PAINTED EIFS	<b>TP2</b>	ARCHITECTURALLY FINISHED TILT WALL: SHERWIN WILLIAMS ULTRACRETE - FINE (SW 6113)
<b>P4</b>	SW 6156 RAMIE	<b>E2</b>	P2 PAINTED EIFS	<b>TP3</b>	ARCHITECTURALLY FINISHED TILT WALL: SHERWIN WILLIAMS ULTRACRETE - FINE (SW 6156)
<b>P5</b>	SW 6133 MUSLIN	<b>E3</b>	P3 PAINTED EIFS	<b>TP4</b>	ARCHITECTURALLY FINISHED TILT WALL: SHERWIN WILLIAMS ULTRACRETE - FINE (SW 6133)
<b>P6</b>	SW 0008 CAJUN RED	<b>GL1</b>	GLAZING CLEAR	<b>TP5</b>	ARCHITECTURALLY FINISHED TILT WALL: SHERWIN WILLIAMS ULTRACRETE - FINE (SW 0008)
<b>S1</b>	P1 PAINTED STUCCO	<b>GL2</b>	GLAZING WHITE SPANDREL		
<b>S2</b>	P2 PAINTED STUCCO	<b>A1</b>	AWNING FABRIC: SUNBRELLA - TERRA COTTA		

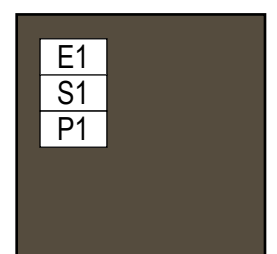
NOTES:  
 - EXTERIOR METAL DOORS TO BE PAINTED P1, P2 OR P6 TO MATCH ADJACENT FACE  
 - ALL GLAZING TO BE "SOLARBAN 60 (2) SOLARGRAY + CLEAR" - VISIBLE LIGHT REFLECTANCE OF 6%  
 - ALL EXPOSED TILT PANELS TO RECEIVE SHERWIN WILLIAMS "ULTRA CRETE FINE TEXTURE" TOP COAT (SIMILAR IN FINISH TO EIFS)



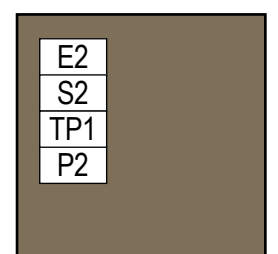
M1 BRICK VENEER ACME BRICK CHARCOAL GRAY



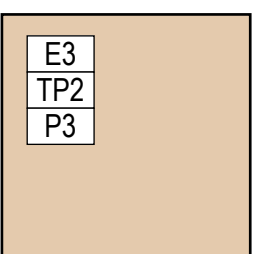
M2 BRICK VENEER ACME BRICK WEATHERWOOD GRAY



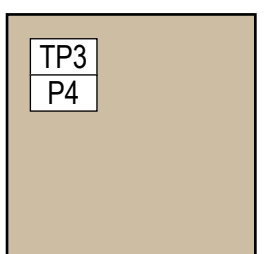
E1 / S1 / P1 EIFS / STUCCO / PAINT SW 7055 ENDURING BRONZE



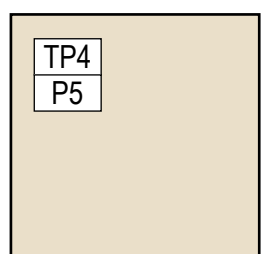
E2 / S2 / TP1 / P2 EIFS / STUCCO / PAINT / TILT SW 6159 HIGH TEA



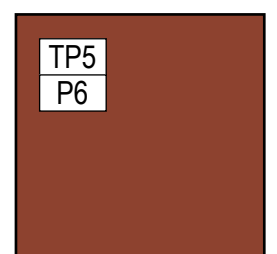
E3 / TP2 / P3 EIFS / PAINT / TILT SW 6113 INTERACTIVE CREAM



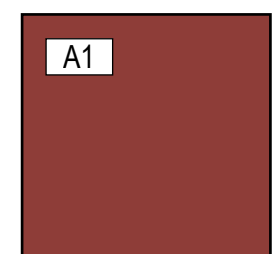
TP3 / P4 TILT PANEL ULTRACRETE FINISH (FINE) - SW 6156



TP4 / P5 TILT PANEL ULTRACRETE FINISH (FINE) - SW 6133



TP5 / P6 TILT PANEL ULTRACRETE FINISH (FINE) - SW 0008



A1 FABRIC AWNING TERRA COTTA

**EXTERIOR ELEVATIONS**