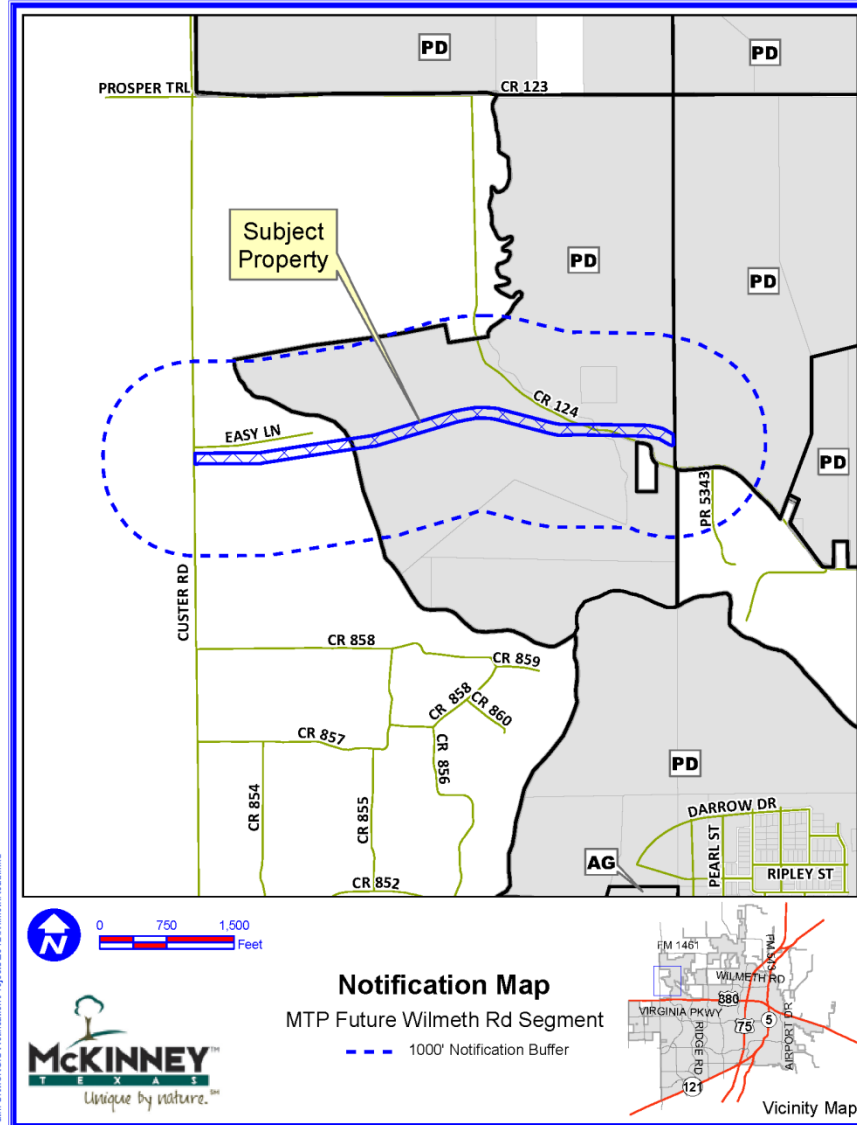


Case No. 12-157M

Conduct a Public Hearing to Consider/Discuss/Act on the Request by the City of McKinney to Amend the Comprehensive Plan, Including the Master Thoroughfare Plan Regarding the Proposed Alignment of the Intersection of Custer Road (F.M. 2478) and the Future Extension of Wilmeth Road.

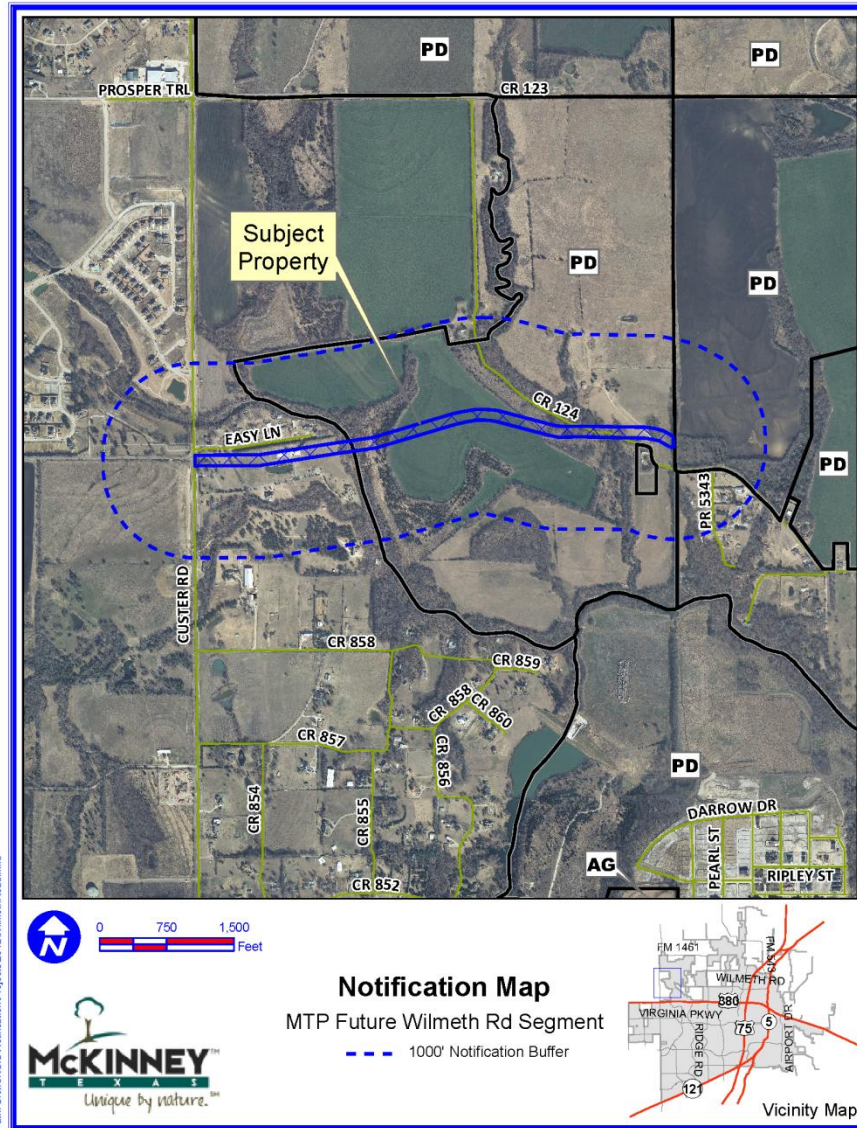
Location Map



Path: S:\MCKGIS\Notification\Projects\2012\WilmetHPRoad.mxd

DISCLAIMER: This map and information contained in it were developed exclusively for use by the City of McKinney. Any use or reliance on this map by anyone else is at that party's risk and without liability to the City of McKinney, its officials or employees for any discrepancies, errors, or variances which may exist.

Aerial Exhibit



Path: S:\MCKGIS\Notification\Projects\2012\WilmetHfRoad.mxd

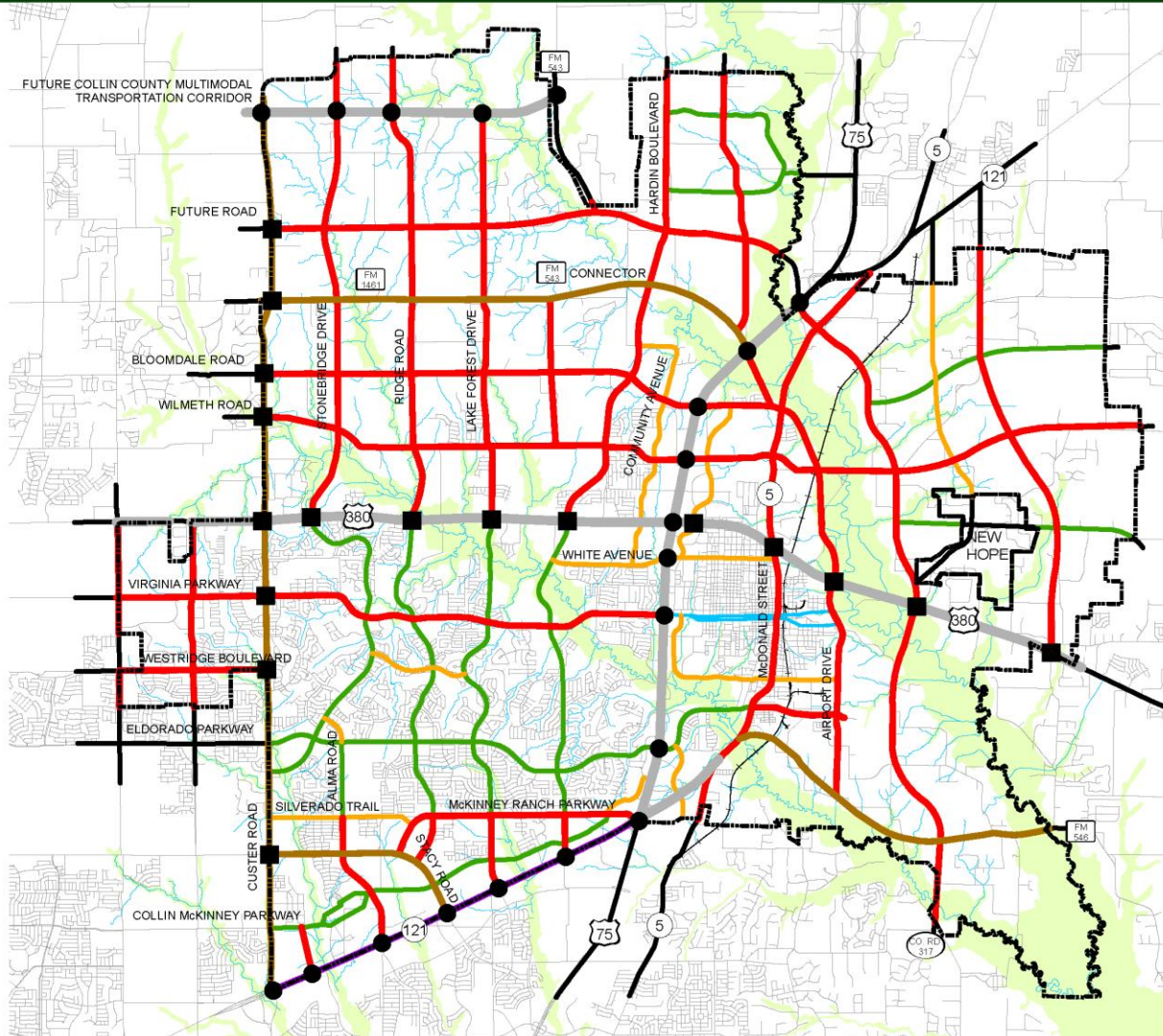
DISCLAIMER: This map and information contained in it were developed exclusively for use by the City of McKinney. Any use or reliance on this map by anyone else is at that party's risk and without liability to the City of McKinney, its officials or employees for any discrepancies, errors, or variances which may exist.



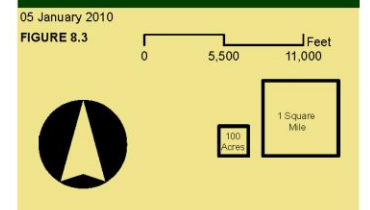
Existing Master Thoroughfare Plan



CITY OF MCKINNEY COMPREHENSIVE PLAN MASTER THOROUGHFARE PLAN



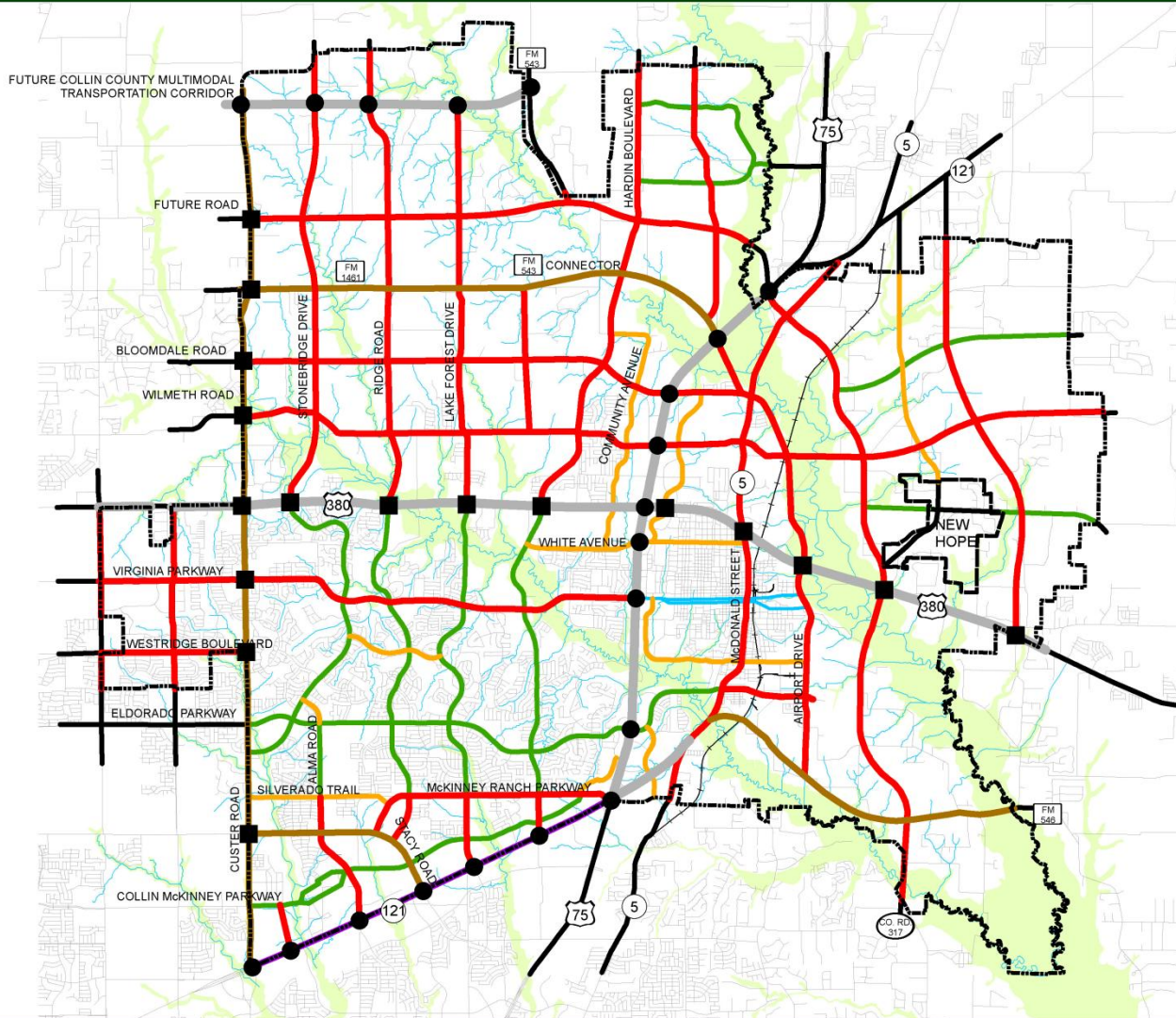
- High Capacity at Grade Intersections
 - Grade Separated Intersections
 - Extraterritorial Jurisdiction
 - Rail Lines
 - Floodplain
- Thoroughfare Categories**
- Major Regional Highway / Multi-Modal
 - Tollway
 - Principal Arterial - 130' ROW (6 lanes)
 - Major Arterial (6 lanes)
 - Minor Arterial (4 lanes)
 - Greenway Arterial (4 lanes)
 - Town Thoroughfare
 - Road By Others
- * Original Adoption 03-22-2004 (Ordinance No. 2004-03-035)
- * Amendment #1: 10-18-2005 (Ordinance No. 2005-10-133)
Revised to reflect changes to Ridge Road and Stonebridge Drive north of Bloomdale Road.
- * Amendment #2 01-05-2010 (Ordinance No. 2010-01-001)
Revised to reflect actual alignments of recently built roads, the Future Collin County Multimodal Transportation Corridor alignment, the Trinity Falls Municipal Utility District, assorted thoroughfare category changes, and boundary changes between McKinney, Fairview and Princeton.
- Source: City of McKinney GIS Department Data



Proposed Master Thoroughfare Plan



CITY OF MCKINNEY
COMPREHENSIVE PLAN
MASTER THOROUGHFARE PLAN



- High Capacity at Grade Intersections
 - Grade Separated Intersections
 - ▭ Extraterritorial Jurisdiction
 - Rail Lines
 - Floodplain
- Thoroughfare Categories**
- Major Regional Highway / Multi-Modal
 - Tollway
 - Principal Arterial - 130' ROW (6 lanes)
 - Major Arterial (6 lanes)
 - Minor Arterial (4 lanes)
 - Greenway Arterial (4 lanes)
 - Town Thoroughfare
 - Road By Others
- * Original Adoption 03-22-2004 (Ordinance No. 2004-03-035)
 * Amendment #1: 10-18-2005 (Ordinance No. 2005-10-133)
 Revised to reflect changes to Ridge Road and Stonebridge Drive north of Bloomdale Road.
 * Amendment #2 01-05-2010 (Ordinance No. 2010-01-001)
 Revised to reflect actual alignments of recently built roads, the Future Collin County Multimodal Transportation Corridor alignment, the Trimly Falls Municipal Utility District, assorted thoroughfare category changes, and boundary changes between McKinney, Fairview and Princeton.
 * Amendment #3 11-6-2012 (Ordinance No. 2012-11-XXX)
 Revised to reflect new Custer Rd. /Wilmet Rd. Alignment

6 November 2012
FIGURE 8.3

Source: City of McKinney GIS Department Data

Staff Recommendation

Staff recommends approval of the proposed amendment to the Comprehensive Plan, including the Master Thoroughfare Plan as outlined in the Staff Report