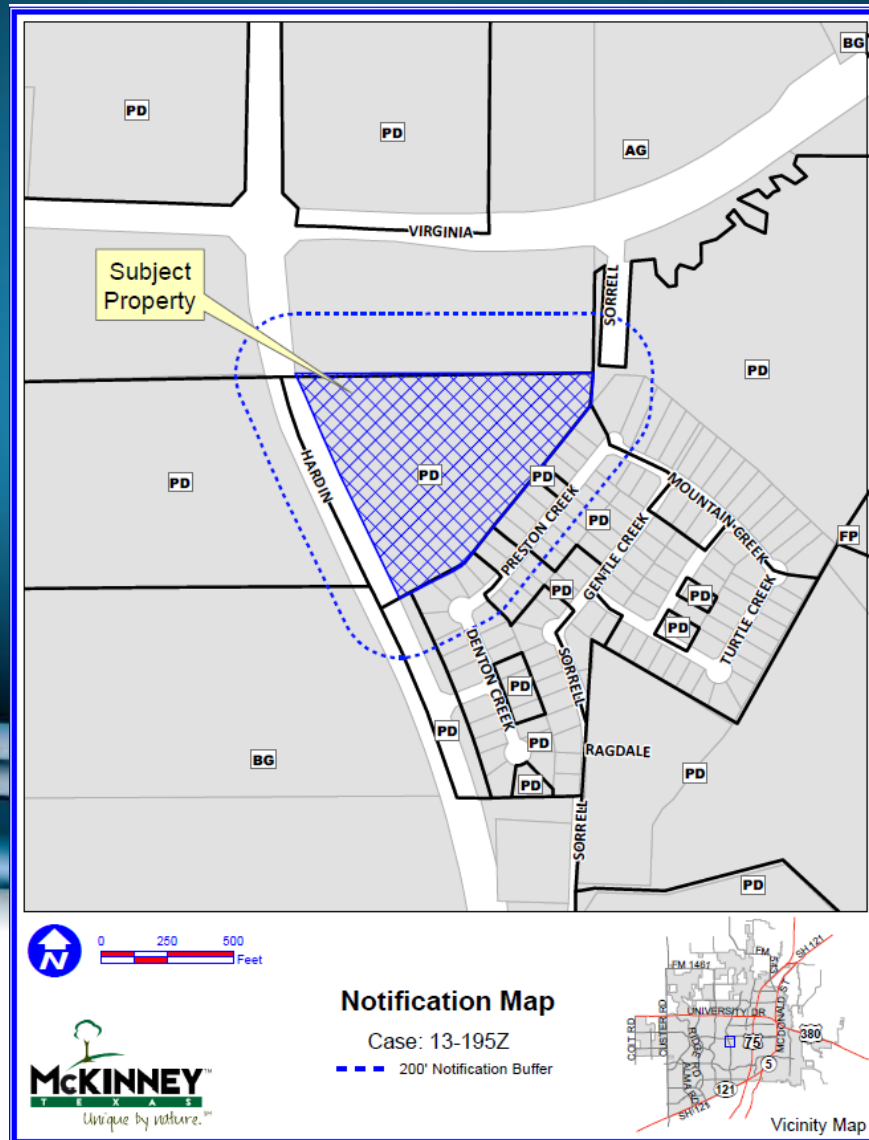


# Case No. 13-195Z

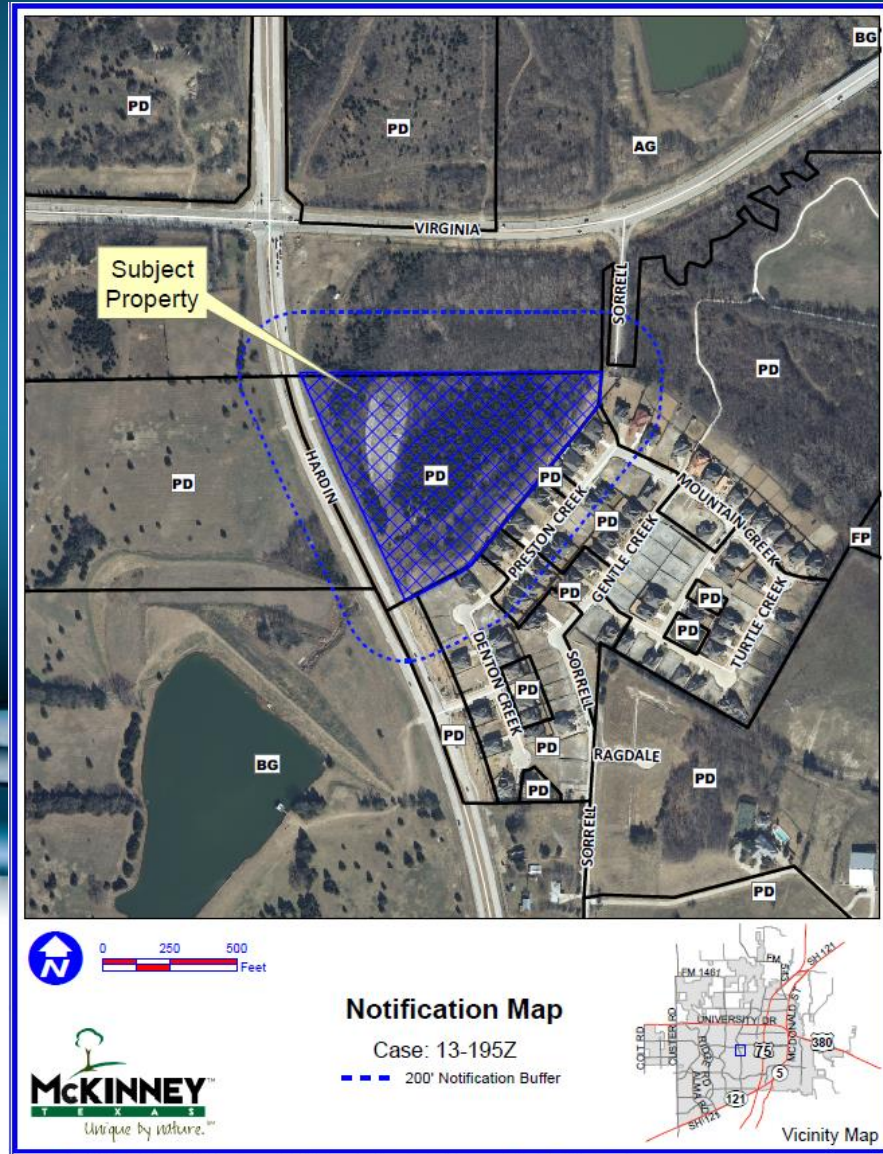
## Sorrellwood Terrace



# Location Map

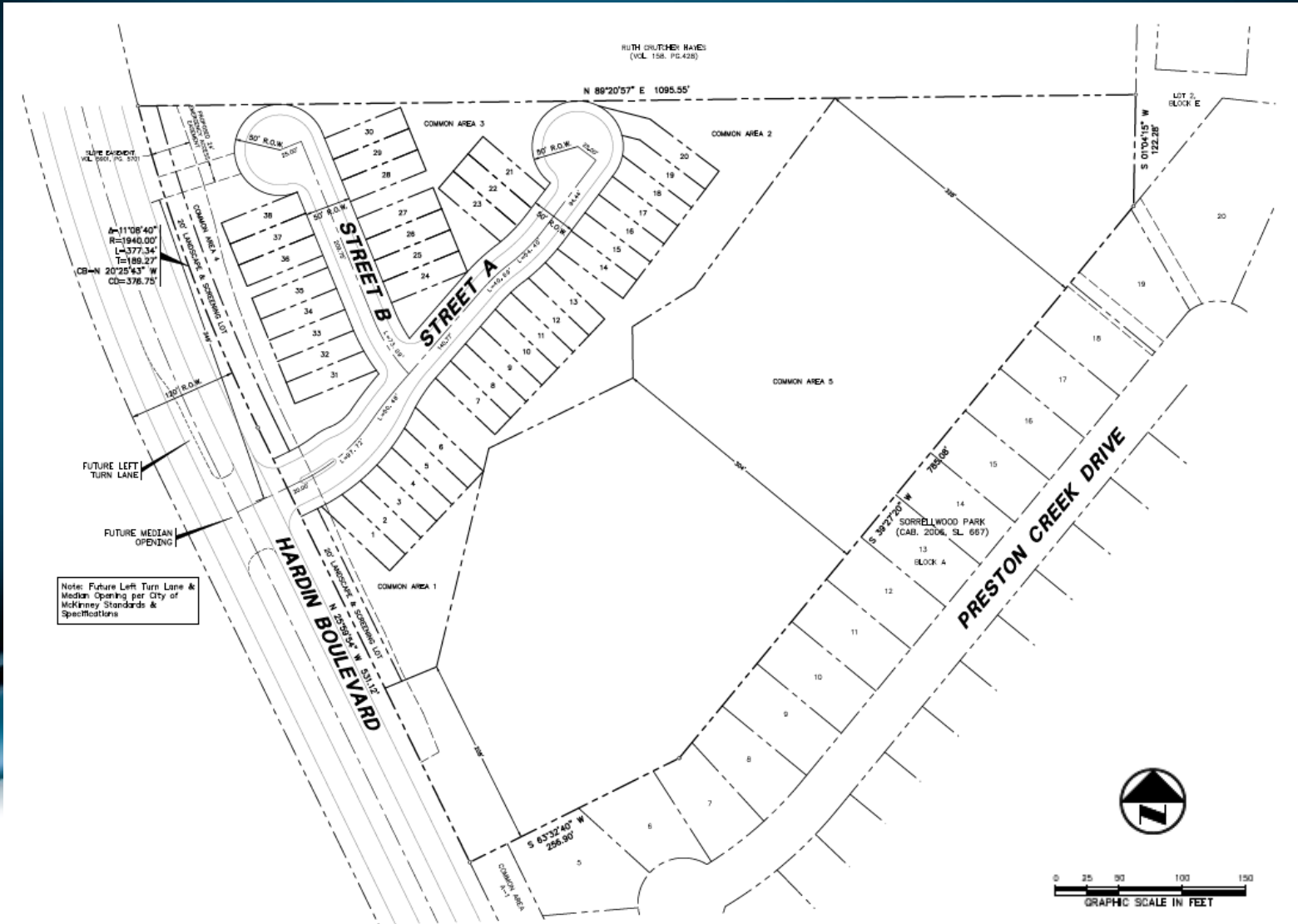


# Aerial Exhibit





# Proposed Site Layout



# Comparison Chart

	<b>“TH” – Townhome Residential District</b>	<b>Proposed “PD” – Planned Development District</b>
<b>Min. Lot Area</b>	2,700 Square Feet	2,250 Square Feet
<b>Min. Lot Width</b>	25 Feet	25 Feet
<b>Min. Lot Depth</b>	80 Feet	90 Feet
<b>Front Yard Setback</b>	20 Feet	10 Feet
<b>Rear Yard Setback</b>	15 Feet	10 Feet
<b>Side Yard at Corner</b>	15 Feet	10 Feet
<b>Min. Building Separation</b>	10 Feet	10 Feet
<b>Max. Building Height</b>	35 Feet	35 Feet
<b>Parking Requirement</b>	2 Covered or Enclosed Spaces	2 Spaces, 1 Covered or Enclosed
<b>Minimum Masonry Percentages</b>	85%	65% including Stucco
<b>Exterior Finishing Materials</b>	Stucco Permitted up to 15% for Each Side	Stucco Permitted on 100% of Each Side
<b>Garage Access</b>	Alley Access Required for Lots Less than 50' in Width	Front Entry Garage Access