



01 BLOCK A WEST ELEVATION (TENNESSEE ST)



02 BLOCK A WEST ELEVATION (TENNESSEE ST)

COLOR KEY

- 1 Heron Plume SW 6070 Cementitious Panel
- 2 Wool Skein SW 6148 Cementitious Panel
- 3 Mindful Gray SW 7016 Cementitious Panel
- 4 Porpoise SW 7047 Cementitious Panel
- 5 Anonymous SW 7046 Lap Siding
- 6 Acme Cinnebar Brick
- 7 Acme Red Sunset Brick
- 8 Acme Mushroom Gray Brick
- 9 Acme Ebony Brick
- 10 PAC-CLAD Weathered Zinc Mtl. Panel
- 11 PAC-CLAD Zinc Mtl. Panel
- 12 Pre-Finished Dark Bronze Mtl.
- 13 Cast Stone Band

NOTE:
 1) ALL MATERIALS AND COLORS TO RETURN TO AN INSIDE CORNER.
 2) ALL VINYL WINDOWS TO BE WHITE.

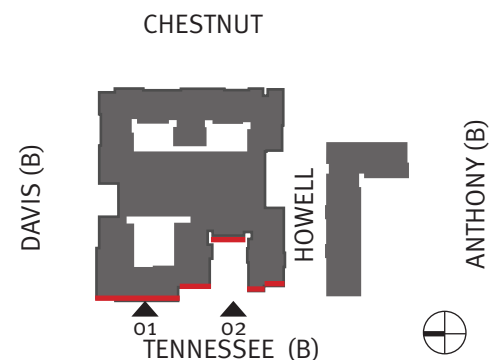
Material % Calculations (Detail 01 + 02)

	% Total	% Required
Brick	83%	80%
Cementitious Panel	13%	Not to Exceed 20%
Metal Panel	4%	

Glazing % Calculations (Detail 01 + 02)

	Gross Sqft	Glazing Sqft	% Total	% Required
Level 1	4088 Sqft	2106 Sqft	51%	30%
Level 2	3718 Sqft	1314 Sqft	35%	
Level 3	3718 Sqft	1314 Sqft	35%	
Level 4	3137 Sqft	1360 Sqft	43%	

NOTE: Retail HVAC equipment located & screened in private courtyards. Residential HVAC equipment located on roof courtyard side.





01 BLOCK A NORTH ELEVATION (DAVIS ST)

COLOR KEY

- 1 Heron Plume SW 6070 Cementitious Panel
- 2 Wool Skein SW 6148 Cementitious Panel
- 3 Mindful Gray SW 7016 Cementitious Panel
- 4 Porpoise SW 7047 Cementitious Panel
- 5 Anonymous SW 7046 Lap Siding
- 6 Acme Cinnebar Brick
- 7 Acme Red Sunset Brick
- 8 Acme Mushroom Gray Brick
- 9 Acme Ebony Brick
- 10 PAC-CLAD Weathered Zinc Mtl. Panel
- 11 PAC-CLAD Zinc Mtl. Panel
- 12 Pre-Finished Dark Bronze Mtl.
- 13 Cast Stone Band

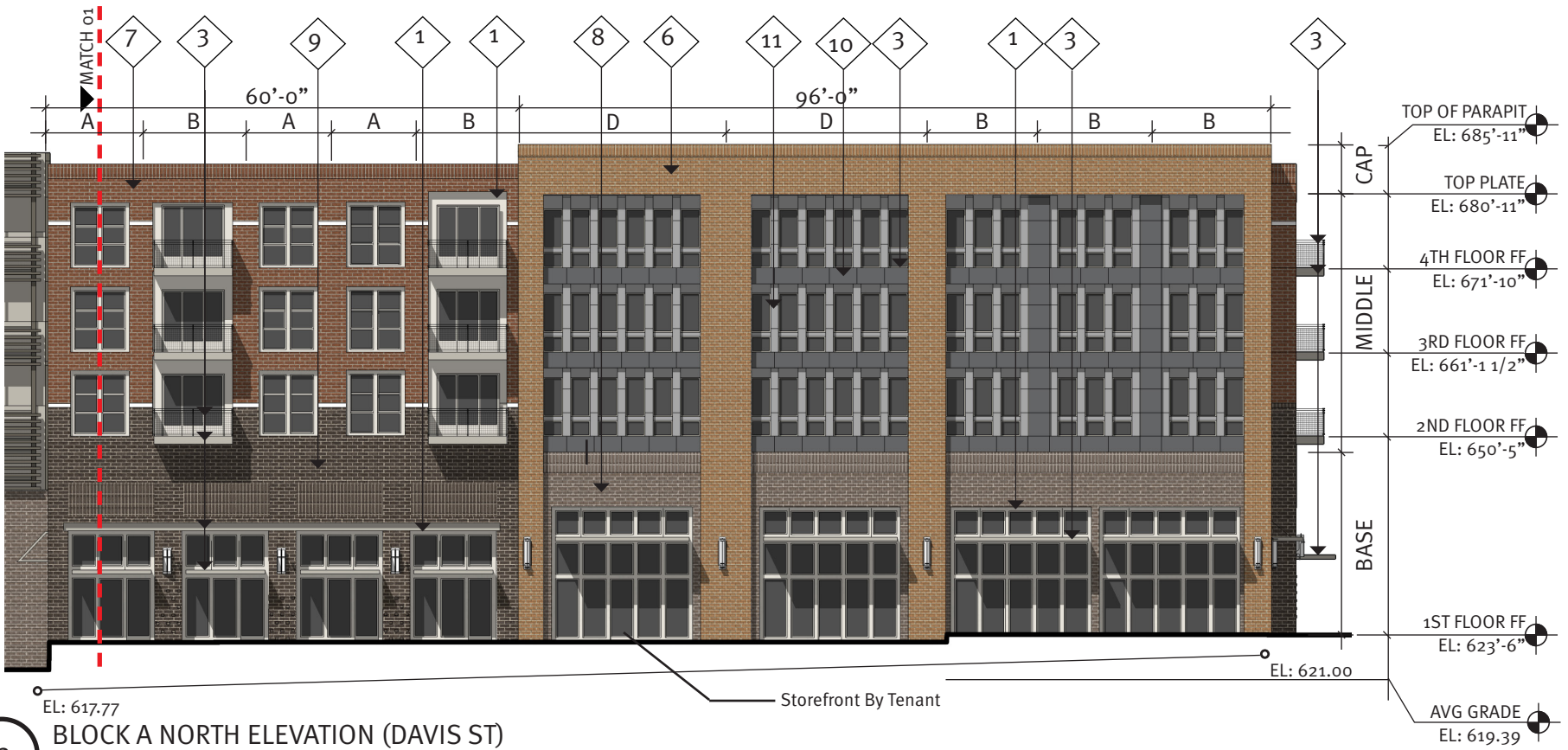
NOTE:
 1) ALL MATERIALS AND COLORS TO RETURN TO AN INSIDE CORNER.
 2) ALL VINYL WINDOWS TO BE WHITE.

Material % Calculations (Detail 01 + 02)

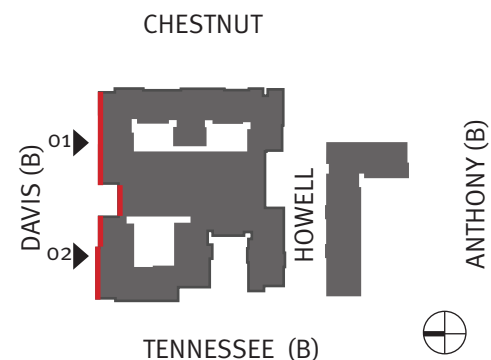
	% Total	% Required
Brick	85%	80%
Cementitious Panel	6%	Not to Exceed 20%
Metal Panel	9%	

Glazing % Calculations (Detail 01 + 02)

	Gross Sqft	Glazing Sqft	% Total	% Required
Retail lvl 1	4838 Sqft	3355 Sqft	70%	65%
Residential lvl 2	4228 Sqft	1500 Sqft	35%	
Residential lvl 3	4228 Sqft	1500 Sqft	35%	
Residential lvl 4	3587 Sqft	1500 Sqft	42%	



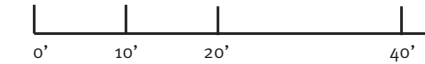
02 BLOCK A NORTH ELEVATION (DAVIS ST)



Downtown McKinney Block A&B
 McKinney, TX



Color Elevations



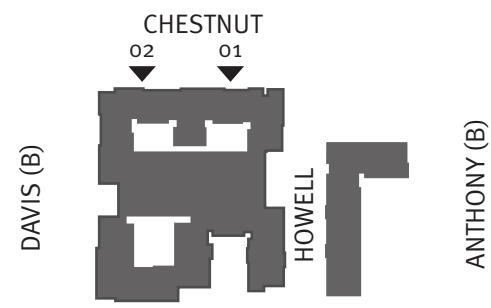
08.05.2016 2015034.00 ad

Copyright © JHP 2016
 Not for Regulatory Approval, Permit or Construction: J. Mark Wolf, AIA
 Registered Architect of State of Texas, Registration No. 9129

COLOR KEY

- 1 Heron Plume SW 6070 Cementitious Panel
- 2 Wool Skein SW 6148 Cementitious Panel
- 3 Mindful Gray SW 7016 Cementitious Panel
- 4 Porpoise SW 7047 Cementitious Panel
- 5 Anonymous SW 7046 Lap Siding
- 6 Acme Cinnebar Brick
- 7 Acme Red Sunset Brick
- 8 Acme Mushroom Gray Brick
- 9 Acme Ebony Brick
- 10 PAC-CLAD Weathered Zinc Mtl. Panel
- 11 PAC-CLAD Zinc Mtl. Panel
- 12 Pre-Finished Dark Bronze Mtl.
- 13 Cast Stone Band

NOTE:
 1) ALL MATERIALS AND COLORS TO RETURN TO AN INSIDE CORNER.
 2) ALL VINYL WINDOWS TO BE WHITE.



TENNESSEE (B)

08.05.2016 2015034.00 ad
 Copyright © JHP 2016
 Not for Regulatory Approval, Permit or Construction: J. Mark Wolf, AIA
 Registered Architect of State of Texas, Registration No. 9129



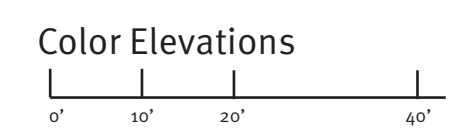
01 BLOCK A EAST ELEVATION (CHESTNUT ST)



02 BLOCK A EAST ELEVATION (CHESTNUT ST)

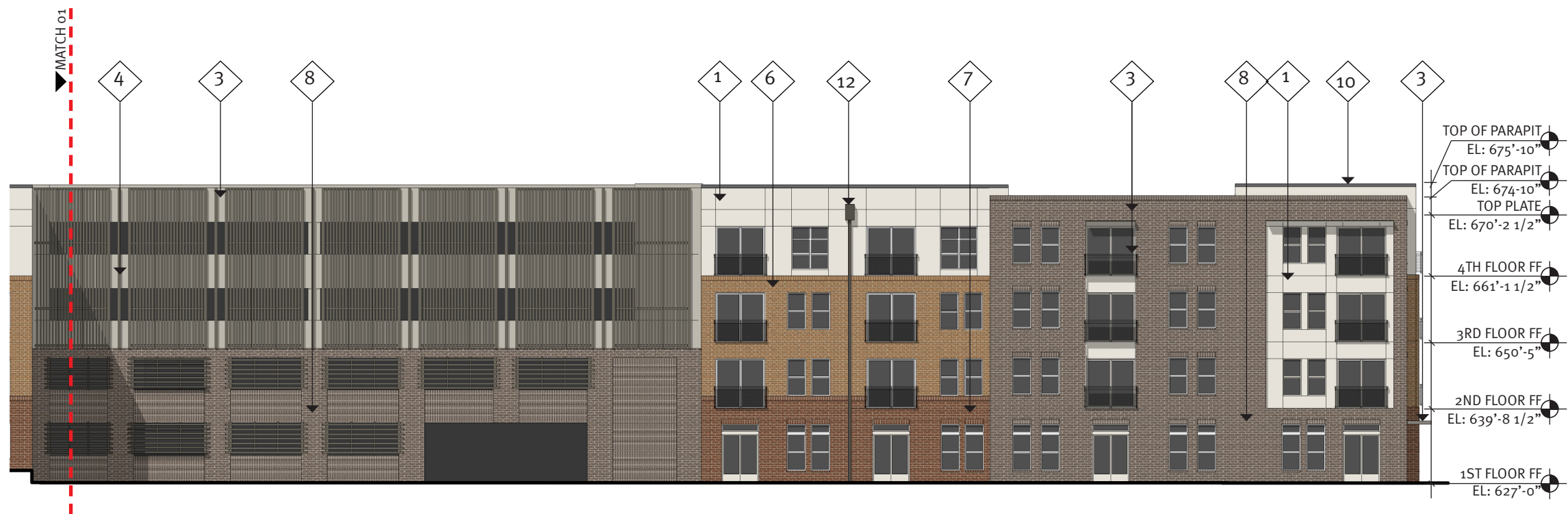


Downtown McKinney Block A&B
 McKinney, TX





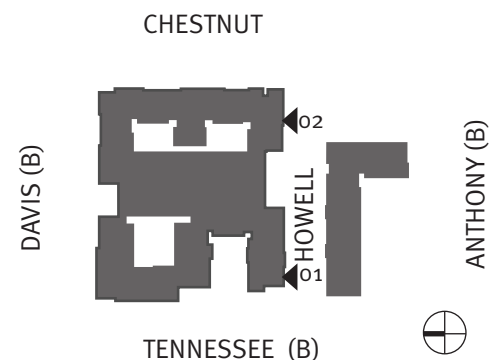
01 BLOCK A SOUTH ELEVATION (HOWELL ST)



02 BLOCK A SOUTH ELEVATION (HOWELL ST)

COLOR KEY	
1	Heron Plume SW 6070 Cementitious Panel
2	Wool Skein SW 6148 Cementitious Panel
3	Mindful Gray SW 7016 Cementitious Panel
4	Porpoise SW 7047 Cementitious Panel
5	Anonymous SW 7046 Lap Siding
6	Acme Cinnebar Brick
7	Acme Red Sunset Brick
8	Acme Mushroom Gray Brick
9	Acme Ebony Brick
10	PAC-CLAD Weathered Zinc Mtl. Panel
11	PAC-CLAD Zinc Mtl. Panel
12	Pre-Finished Dark Bronze Mtl.
13	Cast Stone Band

NOTE:
 1) ALL MATERIALS AND COLORS TO RETURN TO AN INSIDE CORNER.
 2) ALL VINYL WINDOWS TO BE WHITE.





01 BLOCK A SOUTH POOL COURTYARD ELEVATION

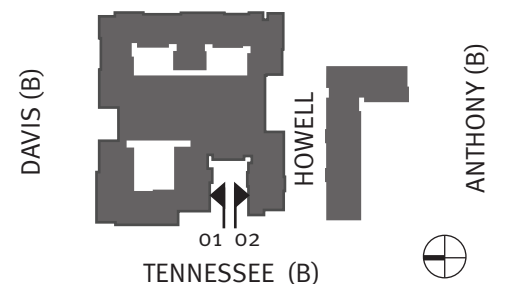


02 BLOCK A NORTH POOL COURTYARD ELEVATION

COLOR KEY	
1	Heron Plume SW 6070 Cementitious Panel
2	Wool Skein SW 6148 Cementitious Panel
3	Mindful Gray SW 7016 Cementitious Panel
4	Porpoise SW 7047 Cementitious Panel
5	Anonymous SW 7046 Lap Siding
6	Acme Cinnebar Brick
7	Acme Red Sunset Brick
8	Acme Mushroom Gray Brick
9	Acme Ebony Brick
10	PAC-CLAD Weathered Zinc Mtl. Panel
11	PAC-CLAD Zinc Mtl. Panel
12	Pre-Finished Dark Bronze Mtl.
13	Cast Stone Band

NOTE:
 1) ALL MATERIALS AND COLORS TO RETURN TO AN INSIDE CORNER.
 2) ALL VINYL WINDOWS TO BE WHITE.

CHESTNUT



Downtown McKinney Block A&B
McKinney, TX

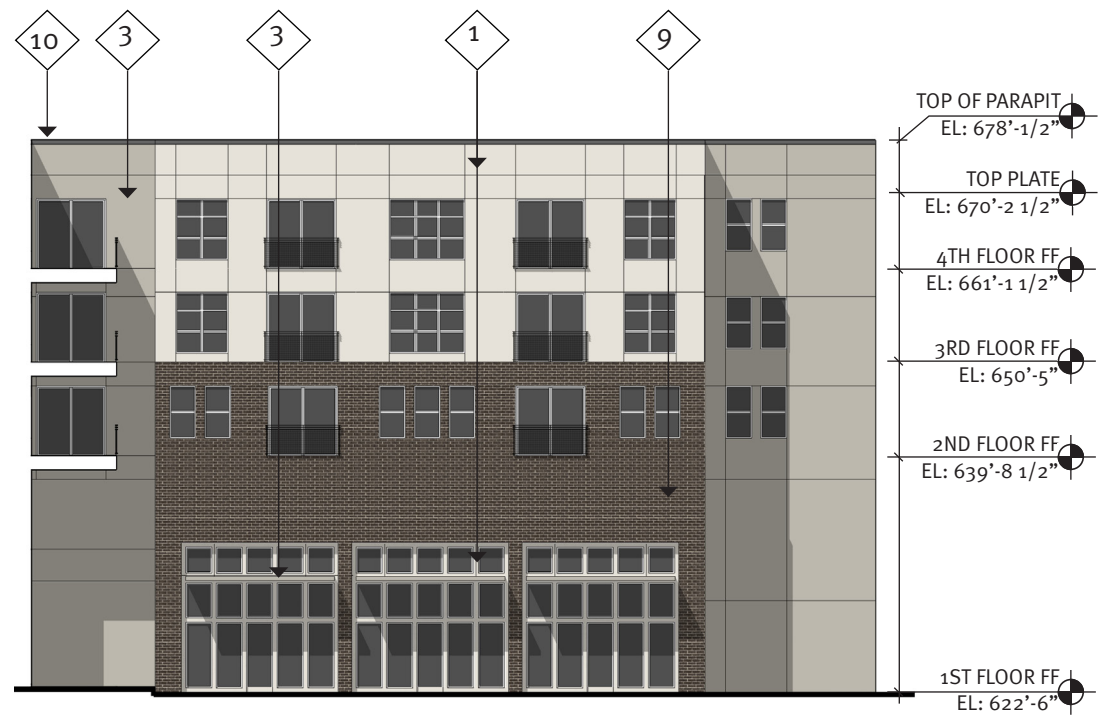


Color Elevations

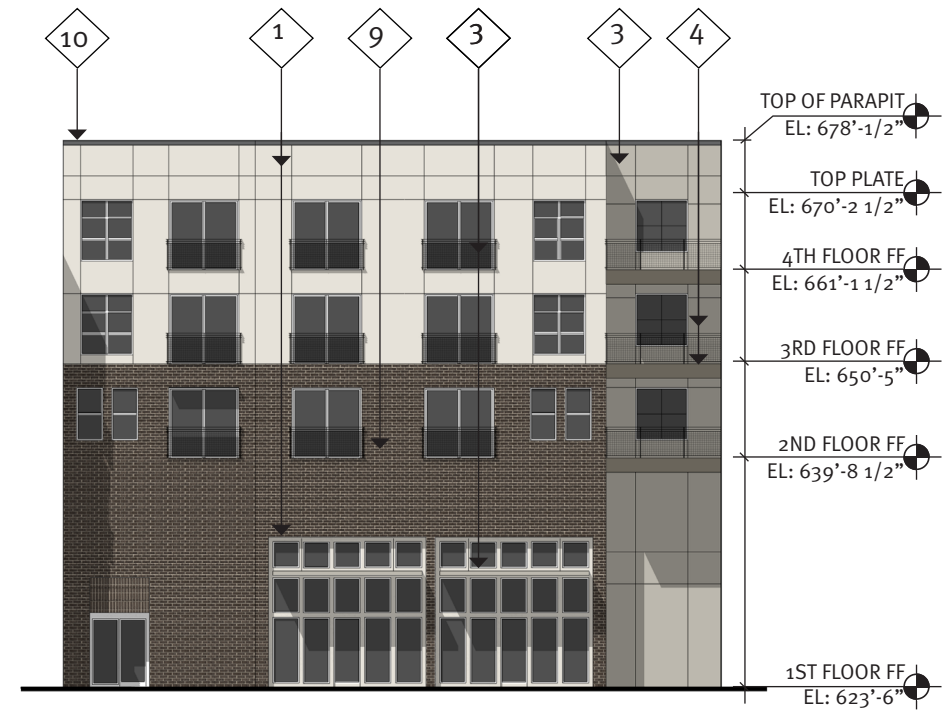


08.05.2016 2015034.00 ad

Copyright © JHP 2016
 Not for Regulatory Approval, Permit or Construction: J. Mark Wolf, AIA
 Registered Architect of State of Texas, Registration No. 9129



01 BLOCK A SOUTH COURTYARD A ELEVATION



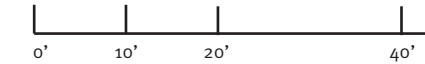
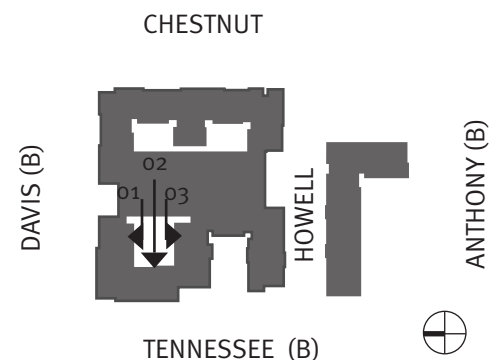
02 BLOCK A EAST COURTYARD A ELEVATION

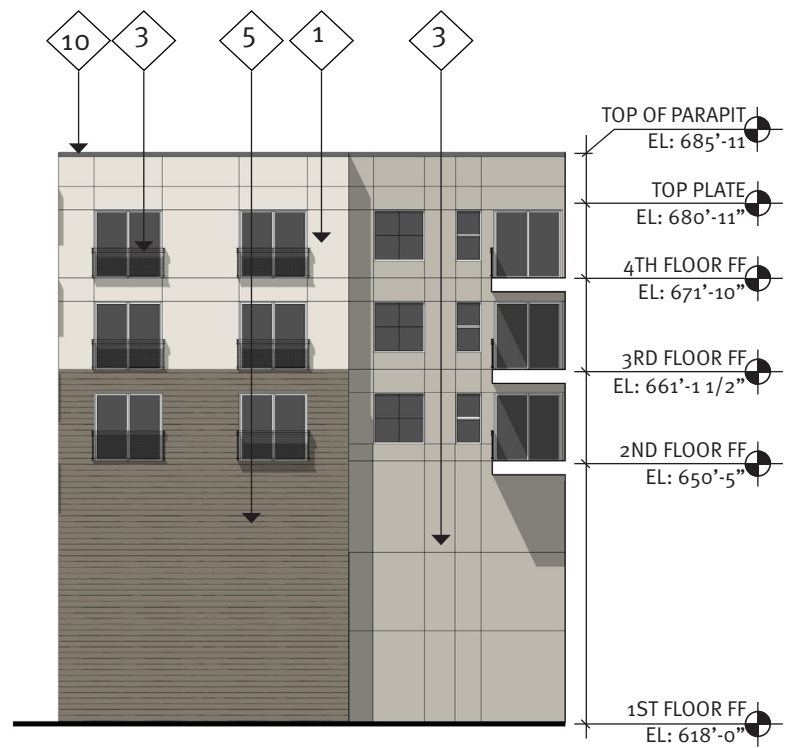
COLOR KEY	
1	Heron Plume SW 6070 Cementitious Panel
2	Wool Skein SW 6148 Cementitious Panel
3	Mindful Gray SW 7016 Cementitious Panel
4	Porpoise SW 7047 Cementitious Panel
5	Anonymous SW 7046 Lap Siding
6	Acme Cinnebar Brick
7	Acme Red Sunset Brick
8	Acme Mushroom Gray Brick
9	Acme Ebony Brick
10	PAC-CLAD Weathered Zinc Mtl. Panel
11	PAC-CLAD Zinc Mtl. Panel
12	Pre-Finished Dark Bronze Mtl.
13	Cast Stone Band

NOTE:
 1) ALL MATERIALS AND COLORS TO RETURN TO AN INSIDE CORNER.
 2) ALL VINYL WINDOWS TO BE WHITE.

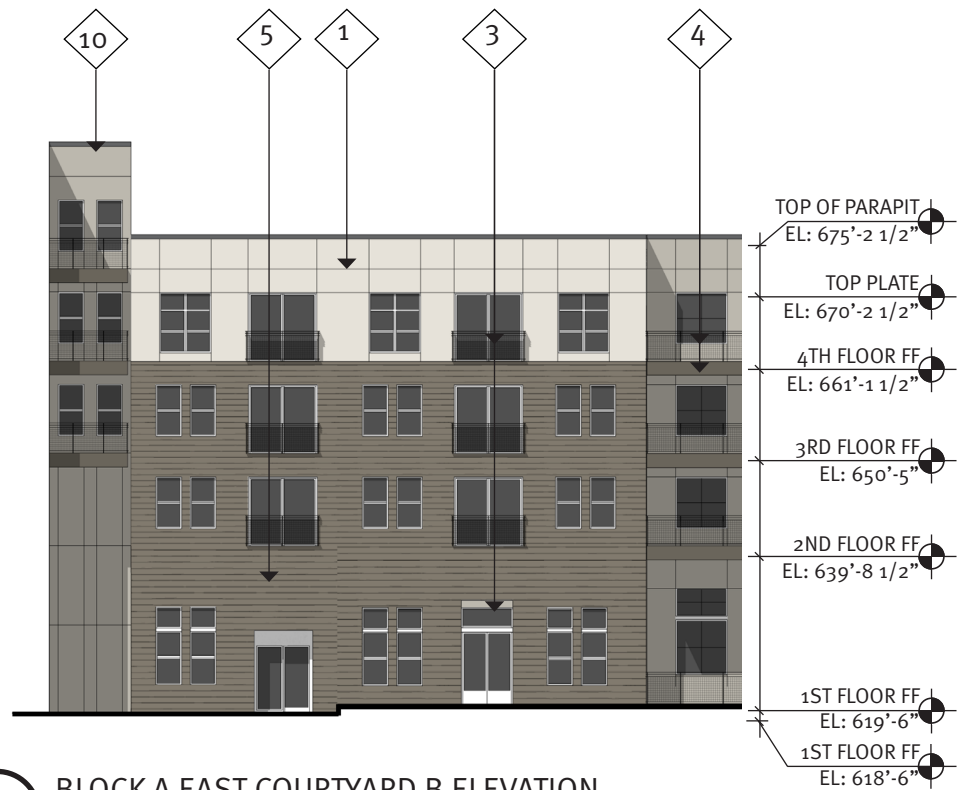


03 BLOCK A NORTH COURTYARD A ELEVATION

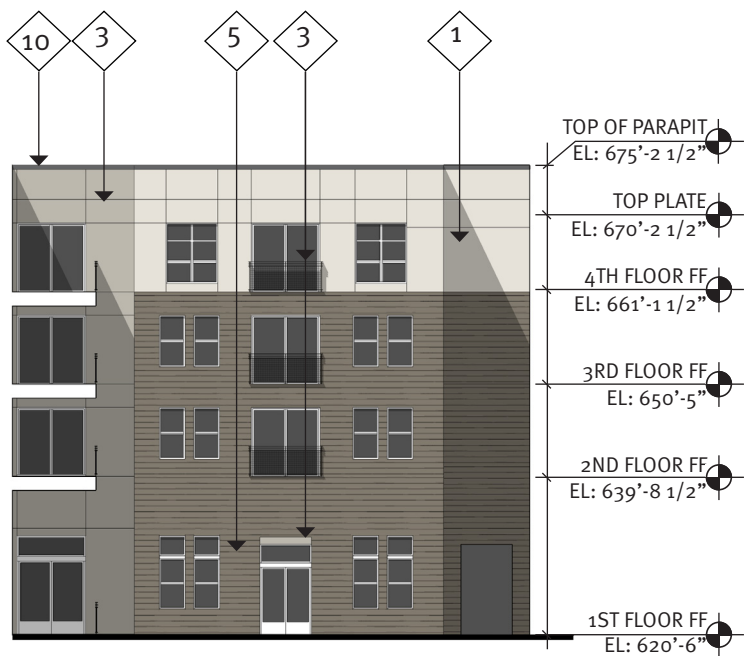




01 BLOCK A SOUTH COURTYARD B ELEVATION



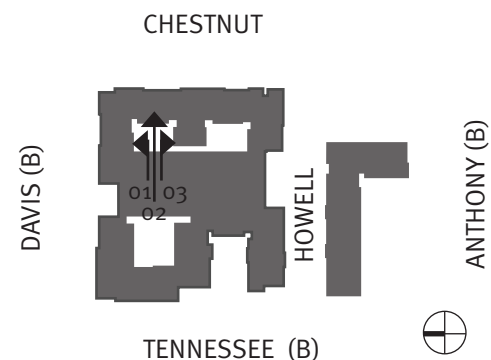
02 BLOCK A EAST COURTYARD B ELEVATION



03 BLOCK A NORTH COURTYARD B ELEVATION

COLOR KEY	
1	Heron Plume SW 6070 Cementitious Panel
2	Wool Skein SW 6148 Cementitious Panel
3	Mindful Gray SW 7016 Cementitious Panel
4	Porpoise SW 7047 Cementitious Panel
5	Anonymous SW 7046 Lap Siding
6	Acme Cinnebar Brick
7	Acme Red Sunset Brick
8	Acme Mushroom Gray Brick
9	Acme Ebony Brick
10	PAC-CLAD Weathered Zinc Mtl. Panel
11	PAC-CLAD Zinc Mtl. Panel
12	Pre-Finished Dark Bronze Mtl.
13	Cast Stone Band

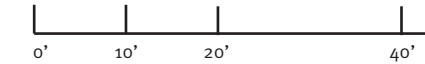
NOTE:
 1) ALL MATERIALS AND COLORS TO RETURN TO AN INSIDE CORNER.
 2) ALL VINYL WINDOWS TO BE WHITE.



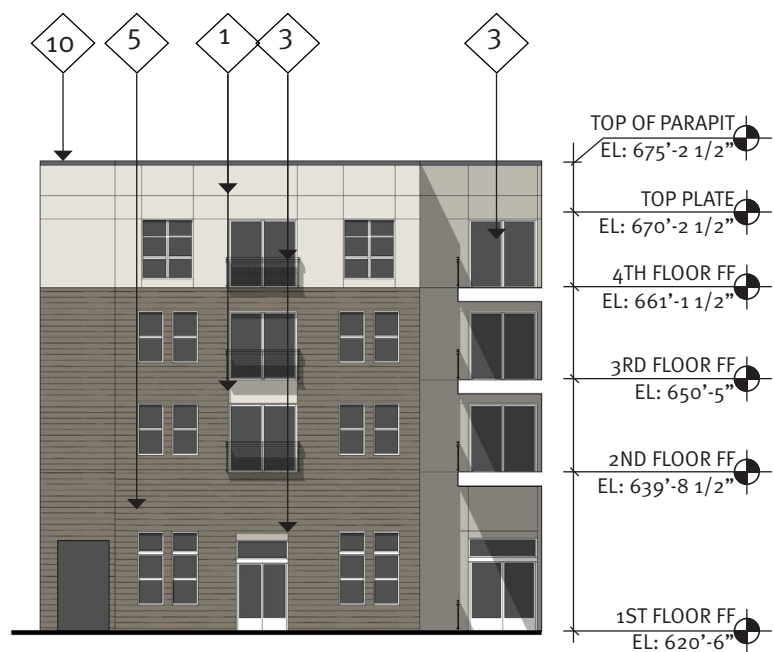
Downtown McKinney Block A&B
 McKinney, TX



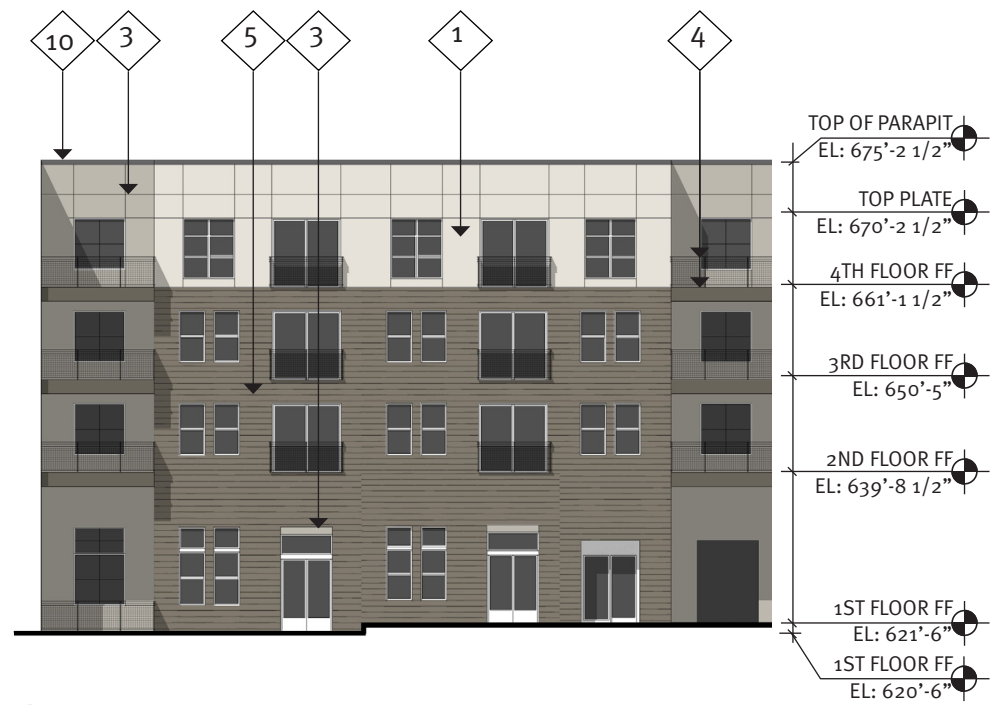
Color Elevations



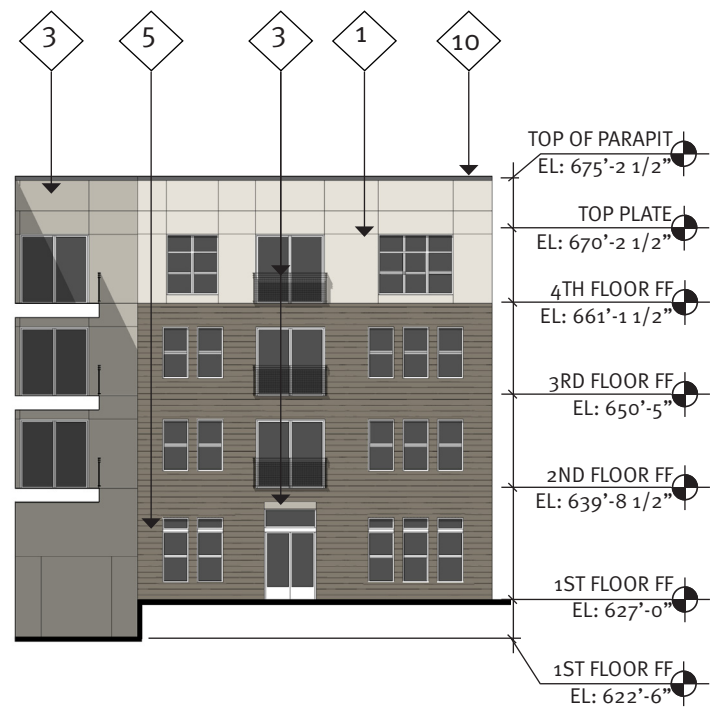
08.05.2016 2015034.00 ad
 Copyright © JHP 2016
 Not for Regulatory Approval, Permit or Construction: J. Mark Wolf, AIA
 Registered Architect of State of Texas, Registration No. 9129



01 BLOCK A SOUTH COURTYARD C ELEVATION



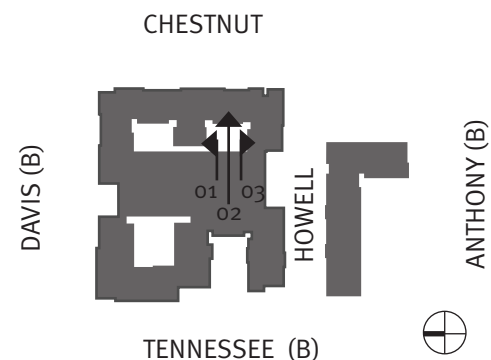
02 BLOCK A WEST COURTYARD C ELEVATION



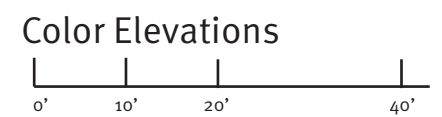
03 BLOCK A NORTH COURTYARD C ELEVATION

COLOR KEY	
1	Heron Plume SW 6070 Cementitious Panel
2	Wool Skein SW 6148 Cementitious Panel
3	Mindful Gray SW 7016 Cementitious Panel
4	Porpoise SW 7047 Cementitious Panel
5	Anonymous SW 7046 Lap Siding
6	Acme Cinnebar Brick
7	Acme Red Sunset Brick
8	Acme Mushroom Gray Brick
9	Acme Ebony Brick
10	PAC-CLAD Weathered Zinc Mtl. Panel
11	PAC-CLAD Zinc Mtl. Panel
12	Pre-Finished Dark Bronze Mtl.
13	Cast Stone Band

NOTE:
 1) ALL MATERIALS AND COLORS TO RETURN TO AN INSIDE CORNER.
 2) ALL VINYL WINDOWS TO BE WHITE.



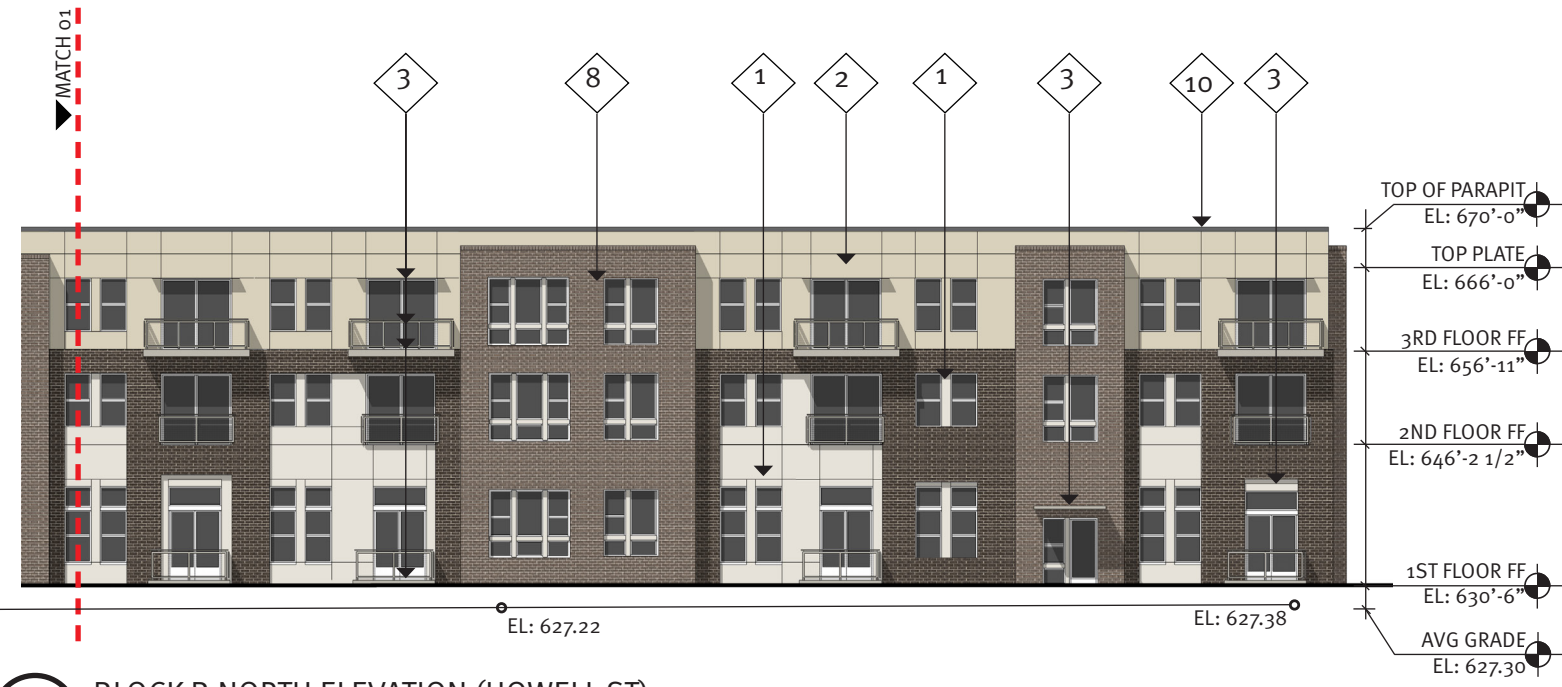
Downtown McKinney Block A&B
 McKinney, TX



08.05.2016 2015034.00 ad
 Copyright © JHP 2016
 Not for Regulatory Approval, Permit or Construction: J. Mark Wolf, AIA
 Registered Architect of State of Texas, Registration No. 9129



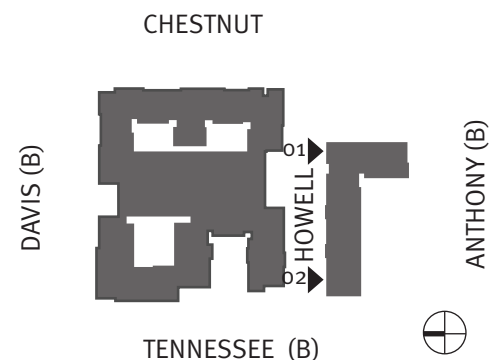
01 BLOCK B NORTH ELEVATION (HOWELL ST)



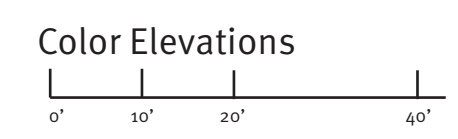
02 BLOCK B NORTH ELEVATION (HOWELL ST)

COLOR KEY	
1	Heron Plume SW 6070 Cementitious Panel
2	Wool Skein SW 6148 Cementitious Panel
3	Mindful Gray SW 7016 Cementitious Panel
4	Porpoise SW 7047 Cementitious Panel
5	Anonymous SW 7046 Lap Siding
6	Acme Cinnebar Brick
7	Acme Red Sunset Brick
8	Acme Mushroom Gray Brick
9	Acme Ebony Brick
10	PAC-CLAD Weathered Zinc Mtl. Panel
11	PAC-CLAD Zinc Mtl. Panel
12	Pre-Finished Dark Bronze Mtl.
13	Cast Stone Band

NOTE:
 1) ALL MATERIALS AND COLORS TO RETURN TO AN INSIDE CORNER.
 2) ALL VINYL WINDOWS TO BE WHITE.



Downtown McKinney Block A&B
 McKinney, TX



08.05.2016 2015034.00 ad

Copyright © JHP 2016
 Not for Regulatory Approval, Permit or Construction: J. Mark Wolf, AIA
 Registered Architect of State of Texas, Registration No. 9129



01 BLOCK B EAST ELEVATION (CHESTNUT ST)

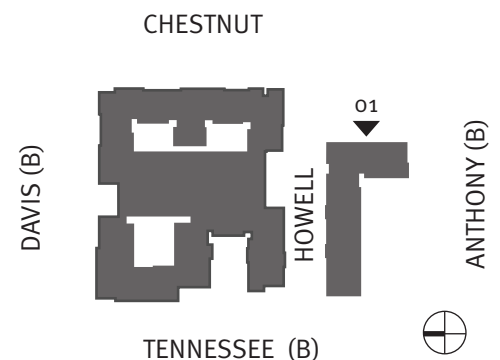
Glazing % Calculations (Detail 01)

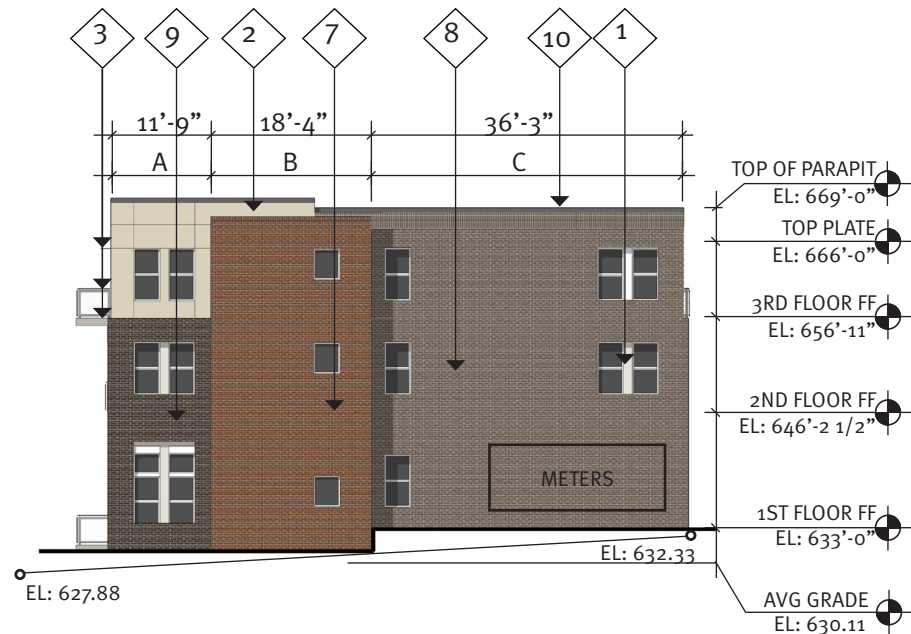
	Gross Sqft	Glazing Sqft	% Total	% Required
Facade	5227 Sqft	1858 Sqft	35%	30%

COLOR KEY

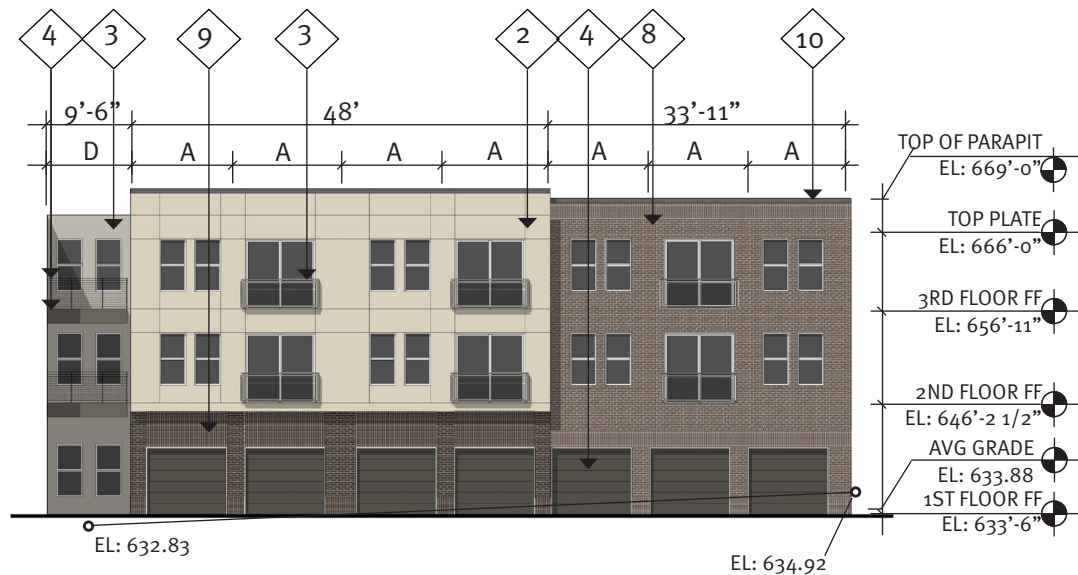
- 1 Heron Plume SW 6070 Cementitious Panel
- 2 Wool Skein SW 6148 Cementitious Panel
- 3 Mindful Gray SW 7016 Cementitious Panel
- 4 Porpoise SW 7047 Cementitious Panel
- 5 Anonymous SW 7046 Lap Siding
- 6 Acme Cinnebar Brick
- 7 Acme Red Sunset Brick
- 8 Acme Mushroom Gray Brick
- 9 Acme Ebony Brick
- 10 PAC-CLAD Weathered Zinc Mtl. Panel
- 11 PAC-CLAD Zinc Mtl. Panel
- 12 Pre-Finished Dark Bronze Mtl.
- 13 Cast Stone Band

NOTE:
 1) ALL MATERIALS AND COLORS TO RETURN TO AN INSIDE CORNER.
 2) ALL VINYL WINDOWS TO BE WHITE.





01 BLOCK B WEST ELEVATION (TENNESSEE ST)



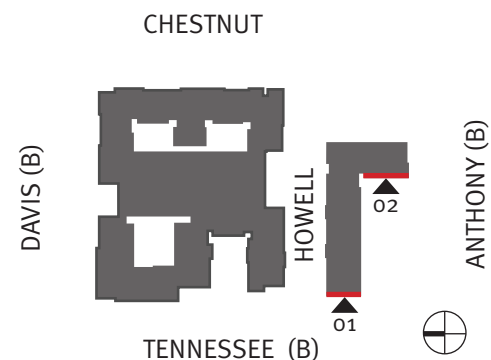
02 BLOCK B WEST ELEVATION (TENNESSEE ST)

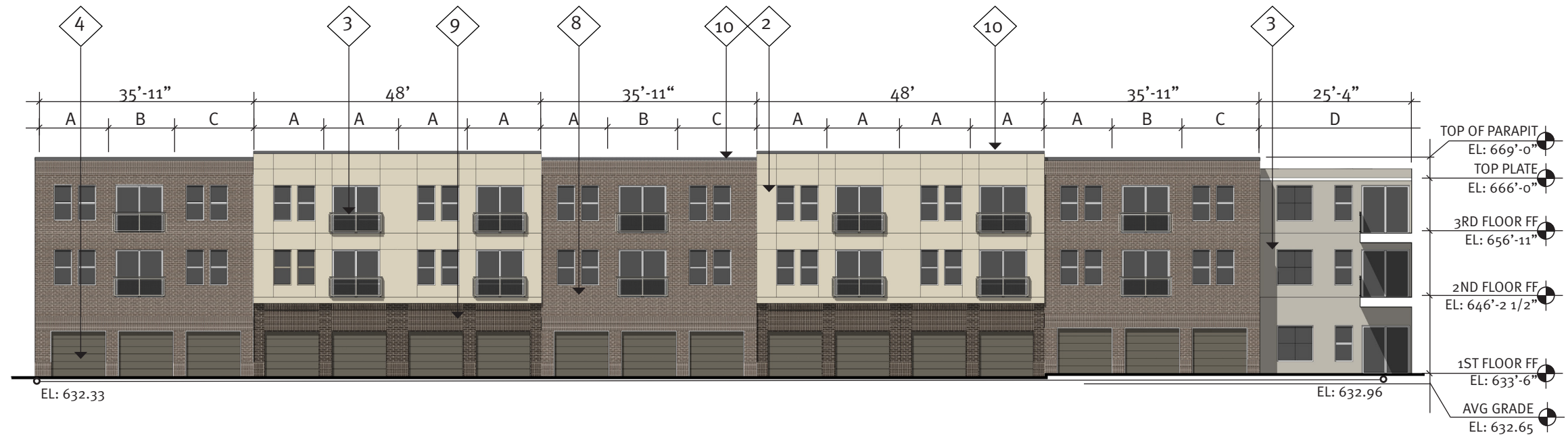
COLOR KEY

- 1 Heron Plume SW 6070 Cementitious Panel
- 2 Wool Skein SW 6148 Cementitious Panel
- 3 Mindful Gray SW 7016 Cementitious Panel
- 4 Porpoise SW 7047 Cementitious Panel
- 5 Anonymous SW 7046 Lap Siding
- 6 Acme Cinnebar Brick
- 7 Acme Red Sunset Brick
- 8 Acme Mushroom Gray Brick
- 9 Acme Ebony Brick
- 10 PAC-CLAD Weathered Zinc Mtl. Panel
- 11 PAC-CLAD Zinc Mtl. Panel
- 12 Pre-Finished Dark Bronze Mtl.
- 13 Cast Stone Band

NOTE:
 1) ALL MATERIALS AND COLORS TO RETURN TO AN INSIDE CORNER.
 2) ALL VINYL WINDOWS TO BE WHITE.

	% Total	% Required
Brick	74%	80%
Cementitious Panel	26%	Not to Exceed 20%
Metal Panel	0%	



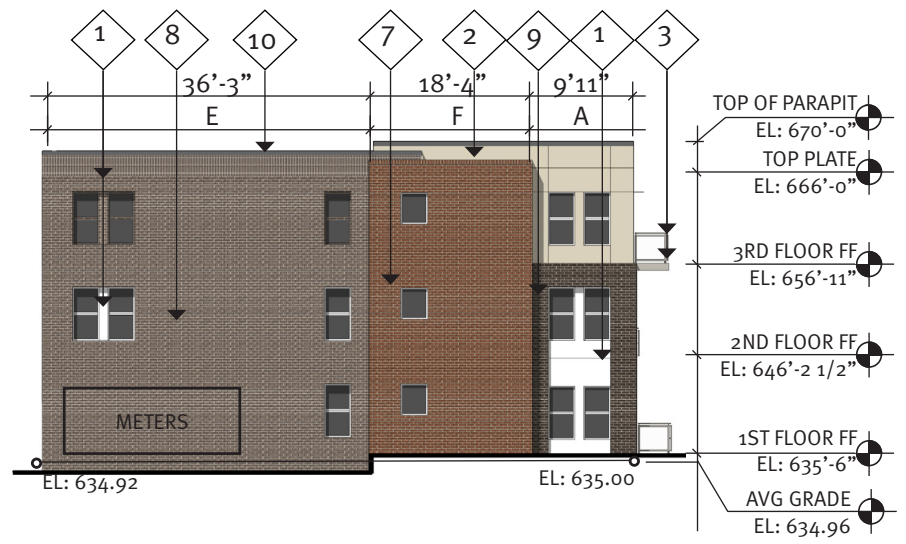


COLOR KEY

1	Heron Plume SW 6070 Cementitious Panel
2	Wool Skein SW 6148 Cementitious Panel
3	Mindful Gray SW 7016 Cementitious Panel
4	Porpoise SW 7047 Cementitious Panel
5	Anonymous SW 7046 Lap Siding
6	Acme Cinnebar Brick
7	Acme Red Sunset Brick
8	Acme Mushroom Gray Brick
9	Acme Ebony Brick
10	PAC-CLAD Weathered Zinc Mtl. Panel
11	PAC-CLAD Zinc Mtl. Panel
12	Pre-Finished Dark Bronze Mtl.
13	Cast Stone Band

NOTE:
 1) ALL MATERIALS AND COLORS TO RETURN TO AN INSIDE CORNER.
 2) ALL VINYL WINDOWS TO BE WHITE.

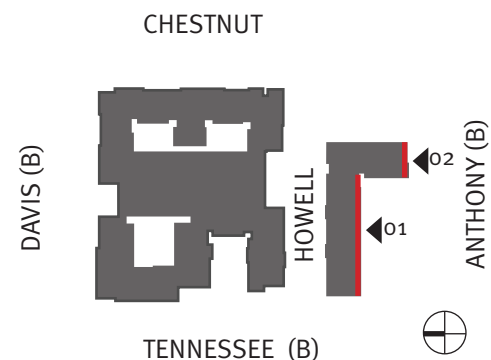
01 BLOCK B SOUTH ELEVATION (ANTHONY ST)



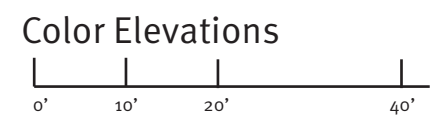
Material % Calculations (Detail 01 + 02)

	% Total	% Required
Brick	71%	80%
Cementitious Panel	29%	Not to Exceed 20%
Metal Panel	0%	Not to Exceed 20%

02 BLOCK B SOUTH ELEVATION (ANTHONY ST)



Downtown McKinney Block A&B
 McKinney, TX



08.05.2016 2015034.00 ad

Copyright © JHP 2016
 Not for Regulatory Approval, Permit or Construction: J. Mark Wolf, AIA
 Registered Architect of State of Texas, Registration No. 9129