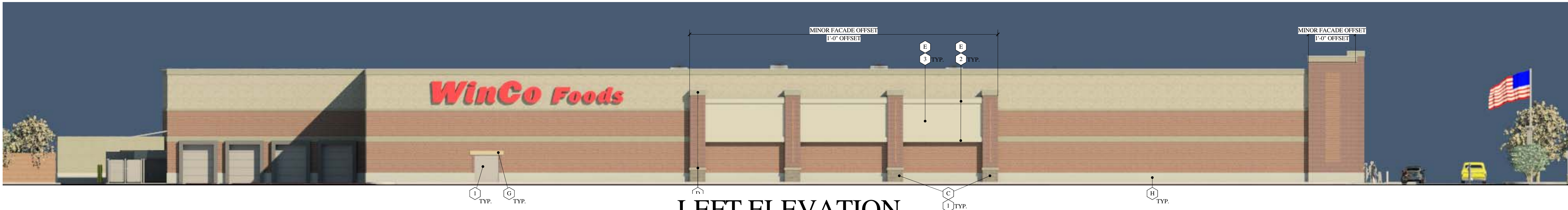
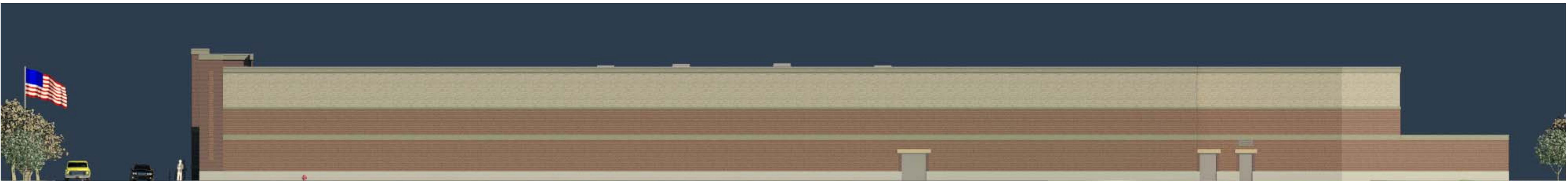




FRONT ELEVATION
(PRIMARY FACADE FACING GRAVES ST.)



LEFT ELEVATION
(FACING UNIVERSITY DR.)



RIGHT ELEVATION
(FACING HARROUN ST.)



REAR ELEVATION
(FACING WADDILL ST.)

EXTERIOR FINISHING MATERIALS COVERAGE						
ELEVATION	A & B	C	D	E	H	NOTES:
FRONT	51.1%	26.5%	5.7%	8.7%	8.0%	MINOR FACADE OFFSETS = 22% OF TOTAL ELEVATION LENGTH > 75% OF ELEVATION HEIGHT MINOR FACADE OFFSETS = 30% OF TOTAL ELEVATION LENGTH > 75% OR GREATER THAN ELEVATION HEIGHT
LEFT	50.1%	29.1%	5.5%	7.9%	7.4%	
RIGHT	50.6%	34%	6.7%	0%	8.7%	
REAR	50.2%	34.6%	6.7%	0%	8.5%	

NOTE: ALL INDIVIDUAL WALLS OF ALL ELEVATIONS = OR > 50% (A) & (B)

MATERIALS & FINISHES

- | | |
|---|---|
| MATERIALS | FINISHES |
| (A) KING SIZE BRICK NO. 1 (10" x 3" MOD.) RUNNING BOND
ACME BRICK BLEND 150 - 'RED SUNSET' | (1) DARK NEUTRAL COLOR TO MEET CITY EXTERIOR
COLOR REQUIREMENTS (SIM. TO SHOWN ABOVE) |
| (B) KING SIZE BRICK NO. 2 (10" x 3" MOD.) RUNNING BOND
ACME BRICK BLEND 137 - 'BURGUNDY' | (2) LIGHT NEUTRAL COLOR NO. 1 TO MEET CITY
EXTERIOR REQUIREMENTS (SIM. TO SHOWN ABOVE) |
| (C) ARCHITECTURAL CMU RUNNING BOND | (3) LIGHT NEUTRAL COLOR NO. 2 TO MEET CITY
EXTERIOR REQUIREMENTS (SIM. TO SHOWN ABOVE) |
| (D) SMOOTH FACE CMU CAP/CORNICE | |
| (E) INTEGRAL COLOR E.I.F.S. OR STUCCO | |
| (F) PREFINISHED STANDING SEAM METAL ROOF PANEL
MBCL COLOR 'TUNDRA' OR SIM. | |
| (G) STONE DOOR HEADER, ARISCRAFT RENAISSANCE ROCKED
FINISH, COLOR 'LIMESTONE' OR SIM. | |
| (H) CAST-IN-PLACE CONCRETE FOUNDATION NATURAL
CONCRETE, SACK FINISH | |

RECEIVED
By Kathy Wright at 10:23 am, Dec 11, 2012

REVISIONS

ARCH. PROJECT NO. 1213
DRAWN: Author
CHECKED: Checker
SUBMITTAL DATES:
OTD DATE:

h/z studio
architecture | planning
404 W. 13TH AVE. SUITE 201 | DENVER, CO 80202
P: 303.228.4159 | E: 303.228.6164 | h.z@h-z.com

WinCo FOODS

SHEET TITLE
ELEVATIONS WITH MATERIALS

SHEET
6