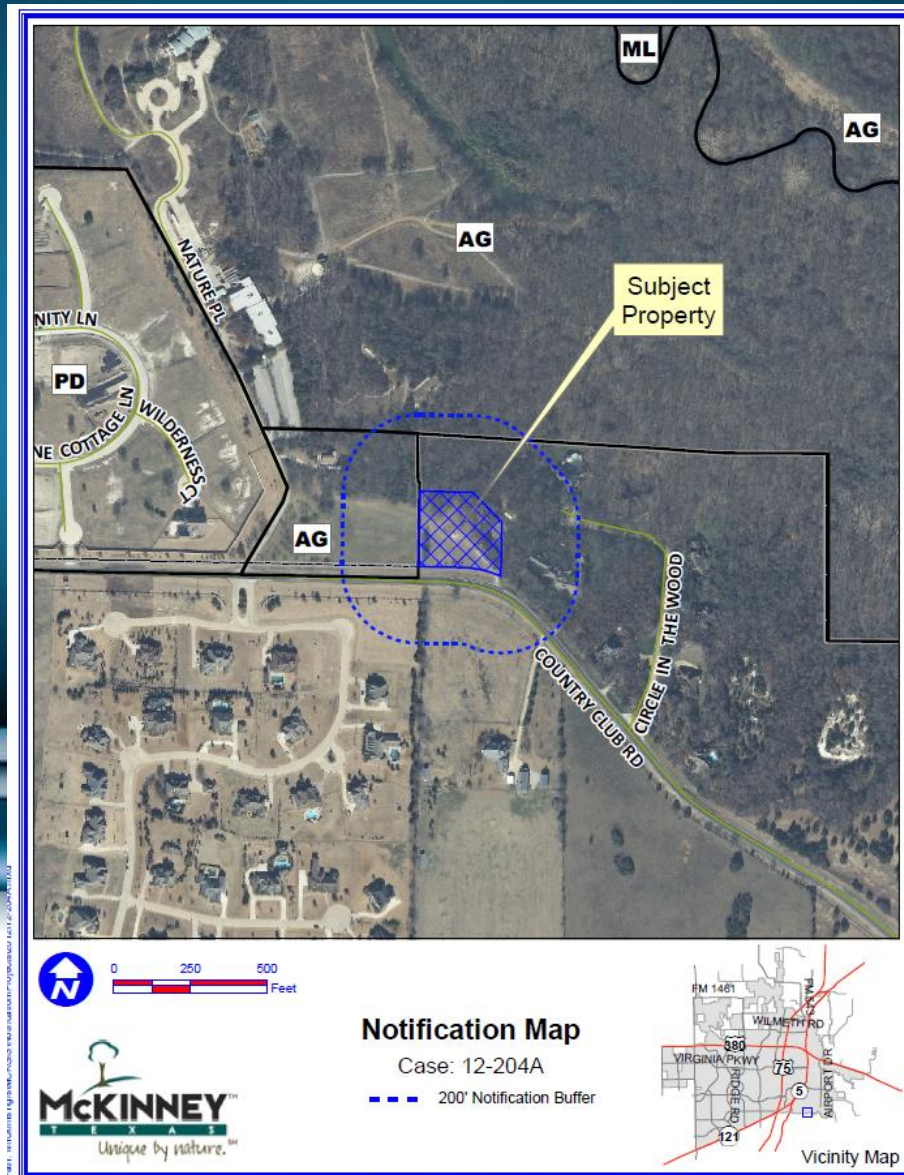


# Case No. 12-204A3

Located on the North Side of Country Club Road and  
Approximately 600 Feet East of Nature Place

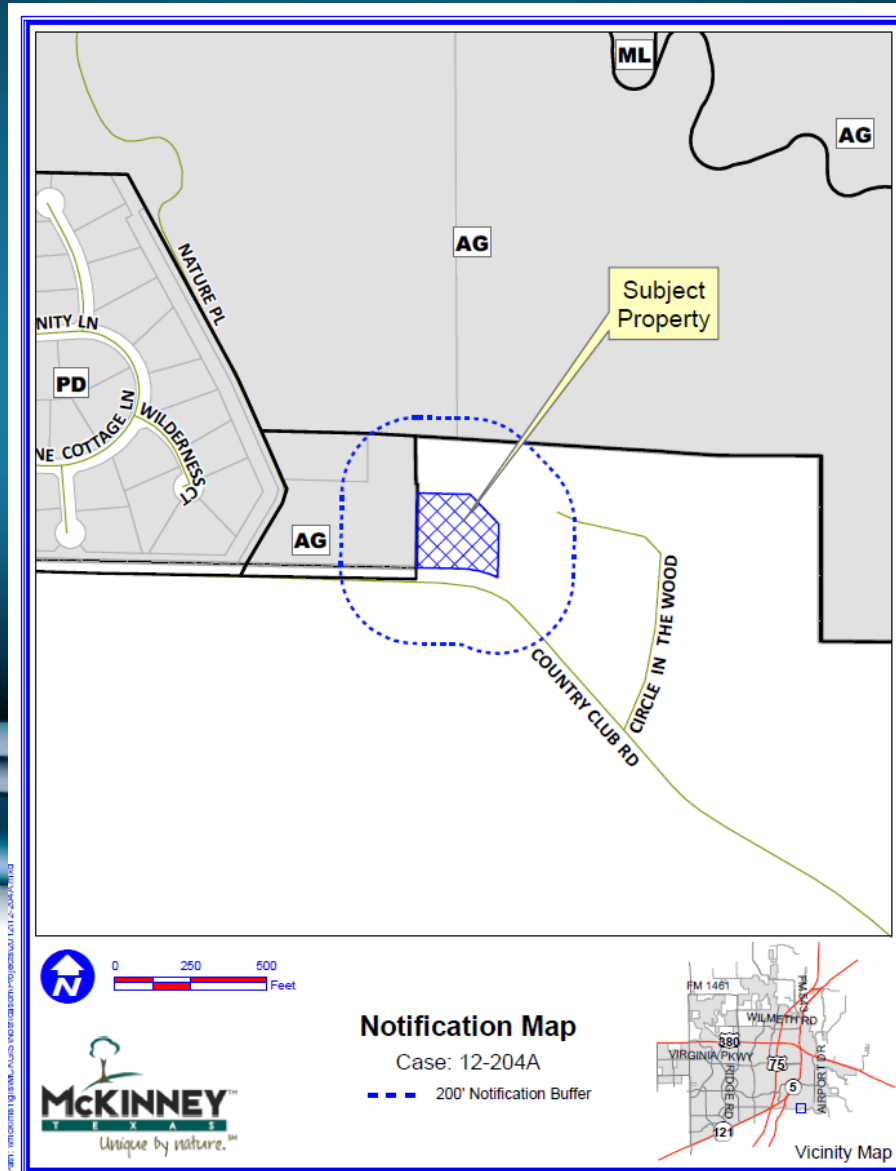


# Aerial Exhibit



DISCLAIMER: This map and information contained in it were developed exclusively for use by the City of McKinney. Any use or reliance on this map by anyone else is at that party's risk and without liability to the City of McKinney, its officials or employees for any discrepancies, errors, or variances which may exist.

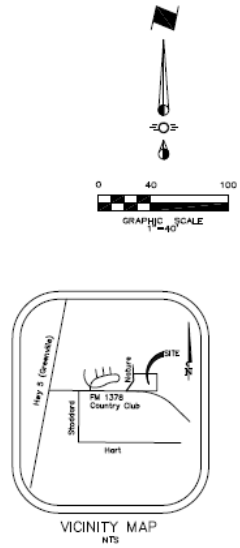
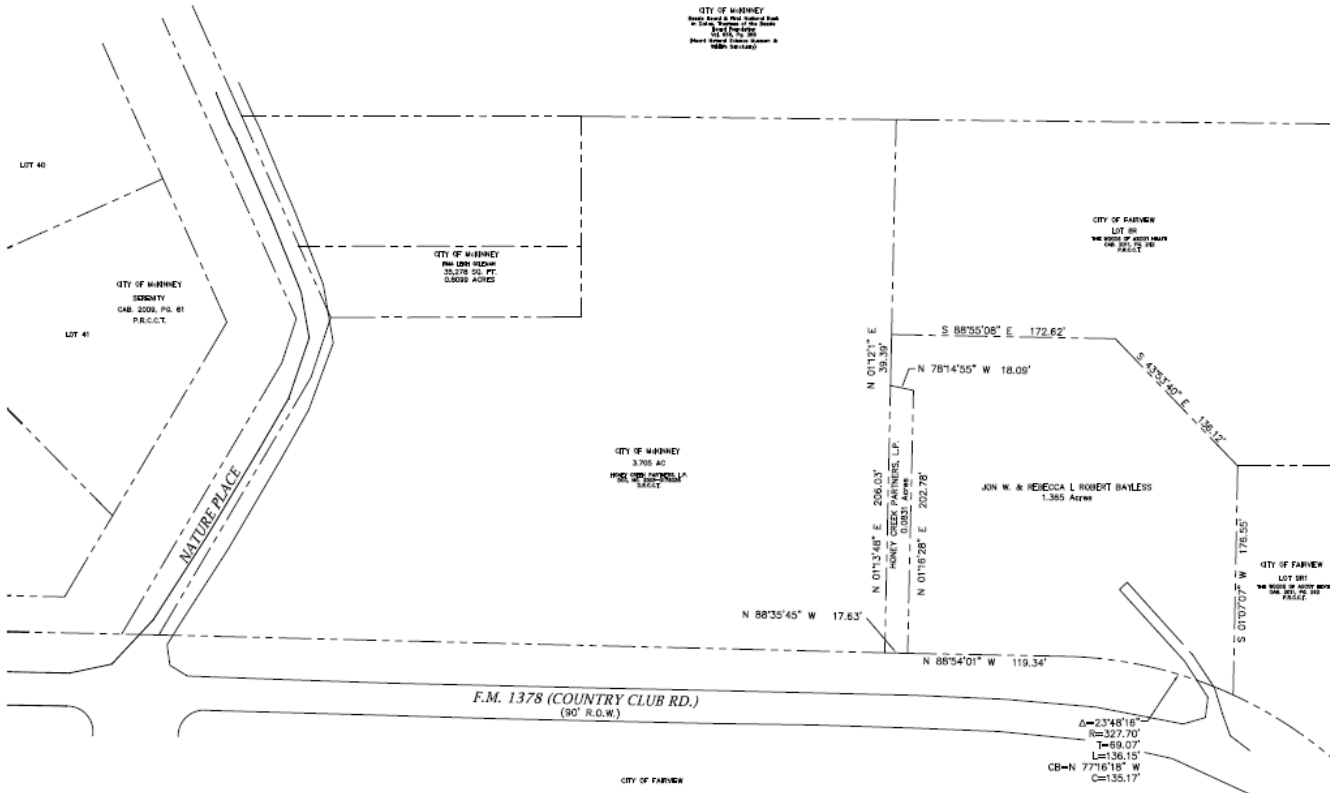
# Location Map



McKinney, Texas

DISCLAIMER: This map and information contained in it were developed exclusively for use by the City of McKinney. Any use or reliance on this map by anyone else is at that party's risk and without liability to the City of McKinney, its officials or employees for any discrepancies, errors, or variances which may exist.

# Annexation Exhibit



NOTE: THIS IS NOT A CONSTRUCTION DOCUMENT.  
 THIS DOCUMENT IS FOR PLANNING PURPOSES ONLY.

Issue Date:	Revisions:	Date:
1		10/28/12
2		5/03/13
3		
4		
5		
6		

**CROSS ENGINEERING CONSULTANTS**  
 111 E. Trammell St. • McKinney, Texas 75069  
 972.562.6409 • Fax: 972.562.6408

Drawn By: C.E.C.L.    Checked By: C.E.C.L.    Scale: 1"=400'

**ANNEXATION EXHIBIT**  
 of  
 Jon W. & Rebecca L. Robert Bayless  
 Samuel Sloan Survey, Abstract 791  
 City of McKinney, Texas

Sheet No.  
**AN**  
 of  
 Project No.  
 12114

Jon W. & Rebecca L. Robert Bayless

# STAFF RECOMMENDATION:

Staff recommends approval of the annexation request.

