



3rd FLOOR WINDOW AREA: 519 SF

2nd FLOOR WINDOW AREA: 425 SF

1st FLOOR WINDOW AREA: 328 SF

**EXTERIOR MATERIALS:**  
 TOTAL WALL AREA: 4,793 SF  
 TOTAL WALL AREA LESS WINDOWS & DOORS: 3,521 SF  
 LIMESTONE: CHOPPED WHITE AUSTIN CHALK, 2,253 SF 63.9%  
 CMU: SPLIT FACE: 539 SF 15.3%  
 HARDI BOARD: PAINTED, 352 SF 9.9% FACADE  
 CAST STONE: 377 SF 10.7% FACADE

**VISUAL LIGHT TRANSMITTANCE**  
 TO MAINTAIN VISUAL APPEARANCE, ALL WINDOW GLASS SHALL HAVE A VISUAL LIGHT TRANSMITTANCE OF 0.60 OR 60% OR GREATER.  
 RE: PPG DOCUMENT ATTACHED.

**1 front elevation – North**  
 scale: 1/4" = 1'-0"

INTERIOR FINISHED FLOOR AT ENTRY DOORS IS + 1/2" ABOVE SIDEWALK ELEVATION



3rd FLOOR WINDOW AREA: 519 SF

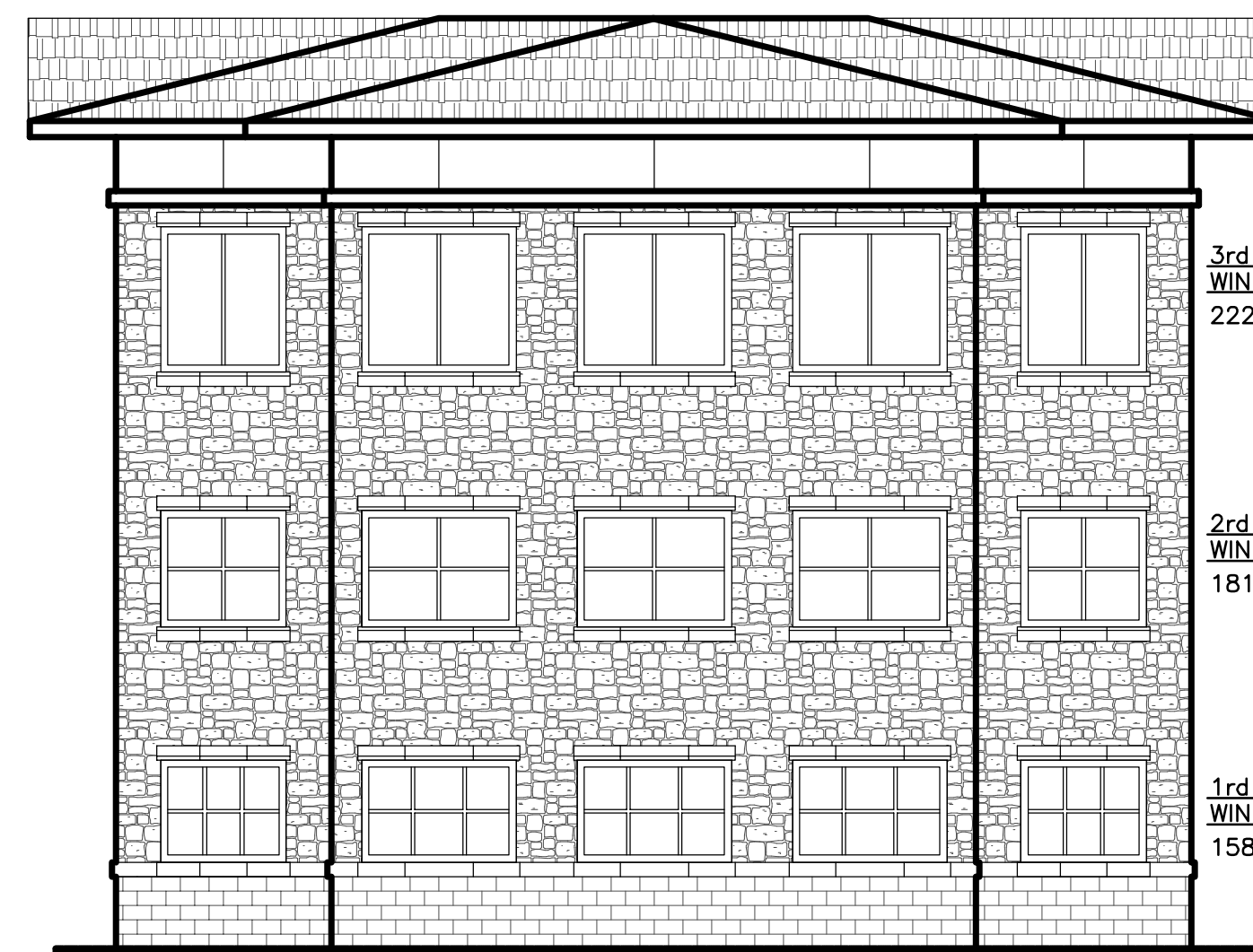
2nd FLOOR WINDOW AREA: 425 SF

1st FLOOR WINDOW AREA: 328 SF

**EXTERIOR MATERIALS:**  
 TOTAL WALL AREA: 4,793 SF  
 TOTAL WALL AREA LESS WINDOWS & DOORS: 3,521 SF  
 LIMESTONE: CHOPPED WHITE AUSTIN CHALK, 2,253 SF 63.9%  
 CMU: SPLIT FACE: 539 SF 15.3%  
 HARDI BOARD: PAINTED, 352 SF 9.9% FACADE  
 CAST STONE: 377 SF 10.7% FACADE

**VISUAL LIGHT TRANSMITTANCE**  
 TO MAINTAIN VISUAL APPEARANCE, ALL WINDOW GLASS SHALL HAVE A VISUAL LIGHT TRANSMITTANCE OF 0.60 OR 60% OR GREATER.

**2 rear elevation – South**  
 scale: 1/8" = 1'-0"



3rd FLOOR WINDOW AREA: 222 SF

2nd FLOOR WINDOW AREA: 181 SF

1st FLOOR WINDOW AREA: 158 SF

**EXTERIOR MATERIALS: (EACH SIDE)**  
 TOTAL WALL AREA: 1,880 SF  
 TOTAL WALL AREA LESS WINDOWS & DOORS: 1,318 SF  
 LIMESTONE: CHOPPED WHITE AUSTIN CHALK, 846 SF: 64.1%  
 CMU: SPLIT FACE: 166 SF: 12.5%  
 HARDI BOARD: PAINTED, 159 SF: 12%  
 CAST STONE: 148 SF: 11.2%

**VISUAL LIGHT TRANSMITTANCE**  
 TO MAINTAIN VISUAL APPEARANCE, ALL WINDOW GLASS SHALL HAVE A VISUAL LIGHT TRANSMITTANCE OF 0.60 OR 60% OR GREATER.

**3 side elevation – East**  
 scale: 1/8" = 1'-0" west elevation opposite

**PROJECT INFORMATION**

PROJECT: 231 HUNT ST OFFICES  
 OWNER: DON DAY  
 ZONING: MTC – DOWNTOWN CORE  
 LOT AREA: 19,999.91 SF OR 0.459 ACRES  
 LOT COVERAGE: 5,580 SF BLDG FOOT PRINT, FLOOR TO AREA RATIO: 27.9%  
 BUILDING INFO: 3 STORY OFFICE BLDG 5,580 SF EACH FLR  
 TOTAL BUILDING AREA: 17,550 SF  
 BUILDING HEIGHT: 42'-0"  
 LOCATION: 231 HUNT STREET  
 CITY OF MCKINNEY – COLLIN COUNTY, TEXAS  
 LOTS 47 AND 48 BLOCK 23  
 DESIGNER: MATTHEW KING  
 mkingarchitect@mkingarchitect.com  
 PH: 469-742-0678  
 DATE: MARCH 30, 2015  
 APRIL 13, 2015 CITY COMMENTS  
 APRIL 21, 2015 CITY COMMENTS

**BUILDING ELEVATIONS**

**RECEIVED**  
 By Planning Department at 3:09 pm, Apr 21, 2015