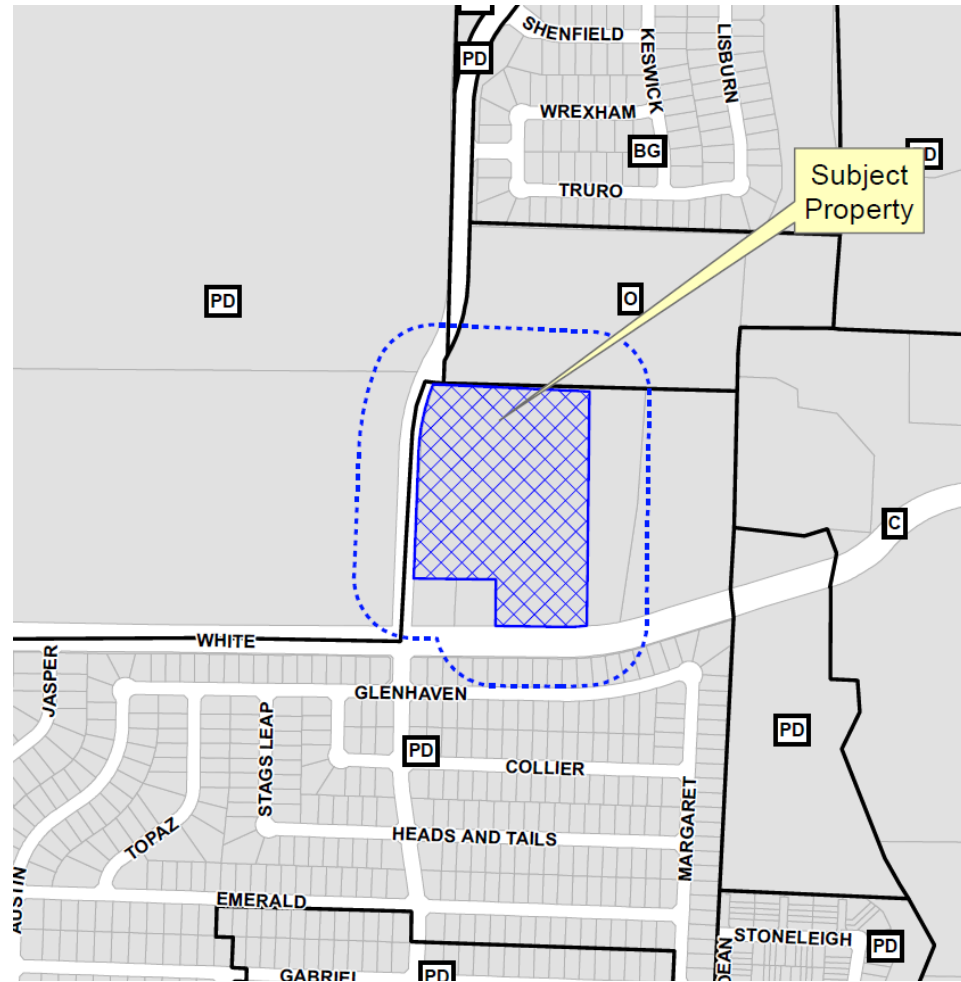


Avilla McKinney Site Plan

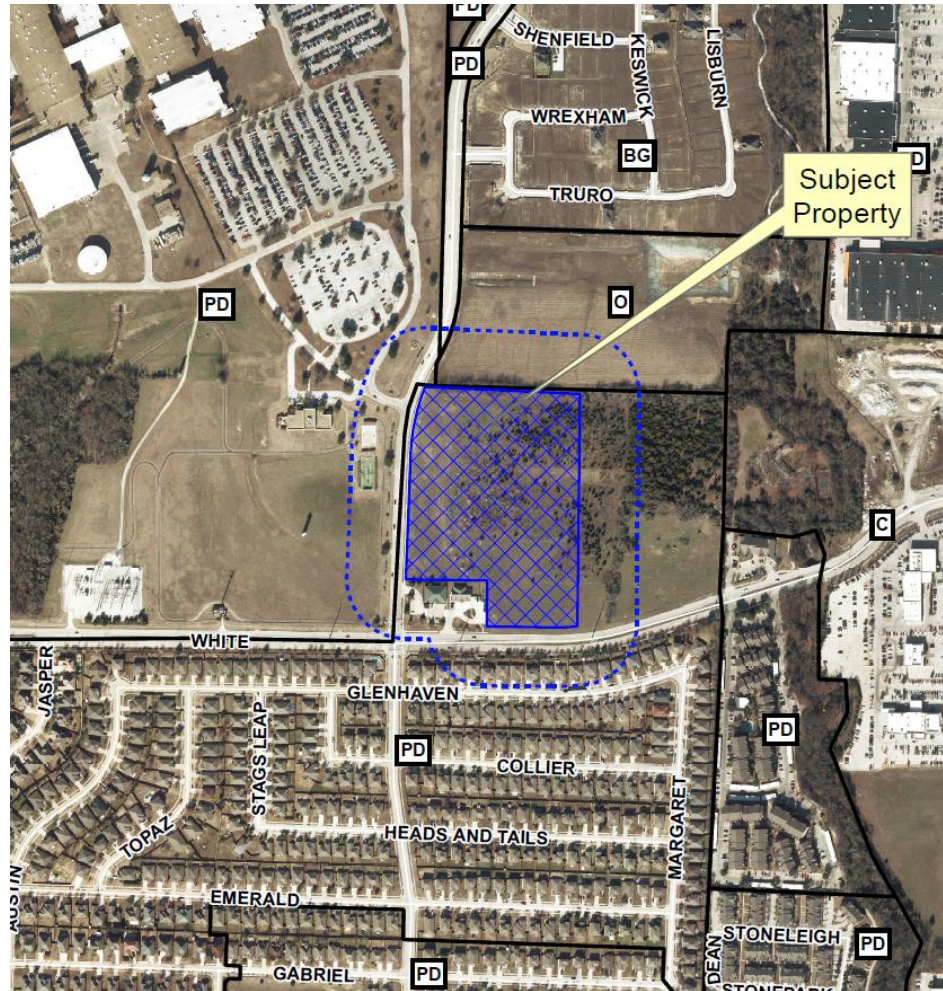
15-316SP



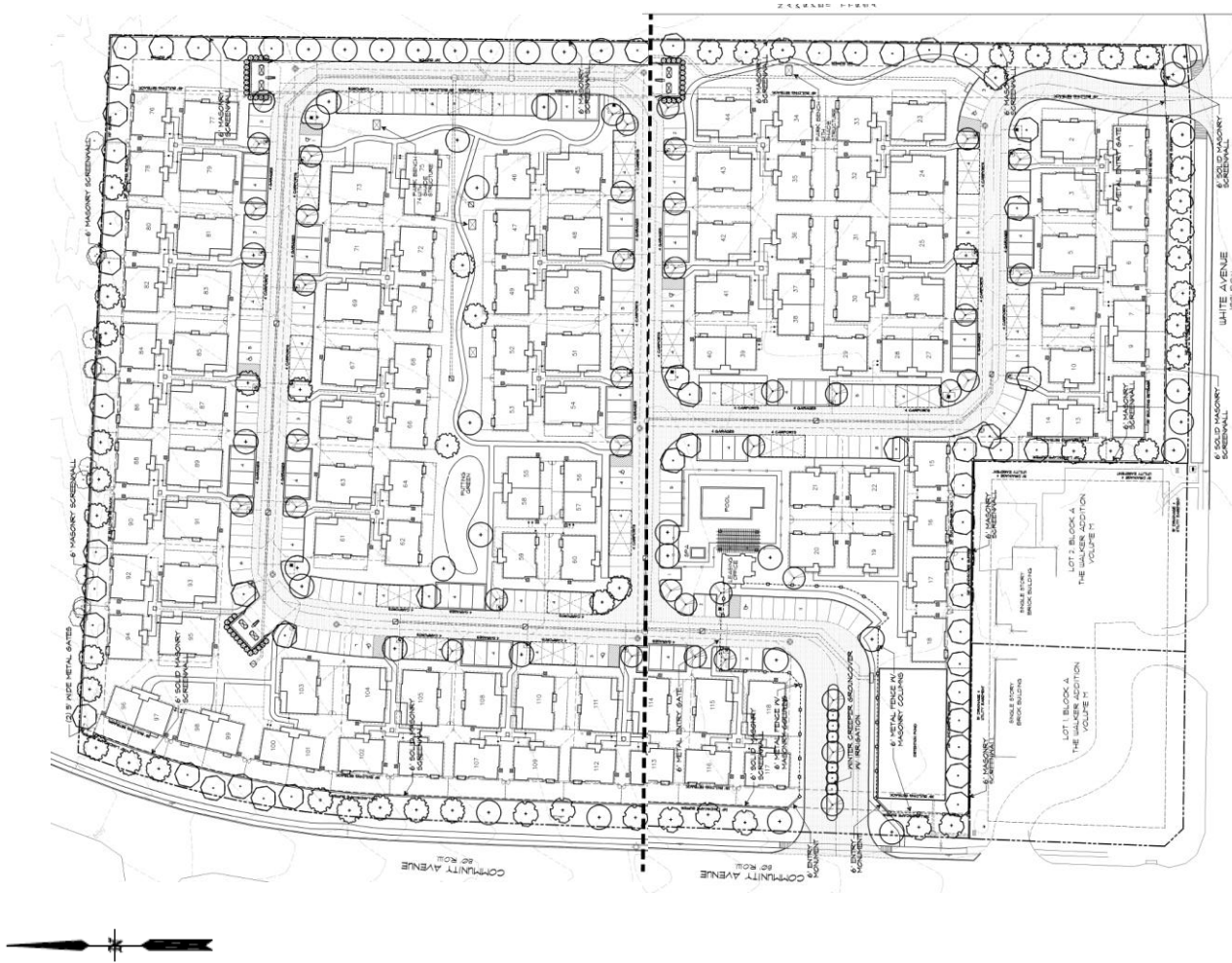
Location Map



Aerial Exhibit

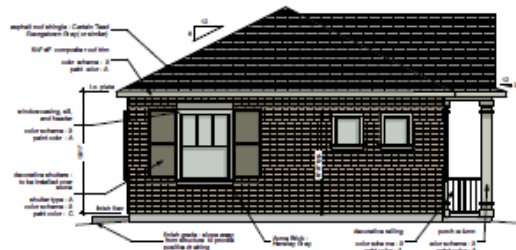


Landscape Plan



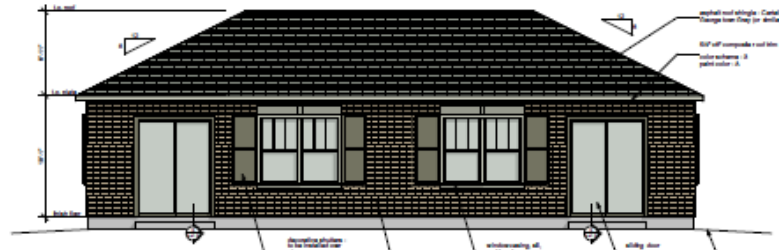
Elevations

Material Elevation Descriptions
 Masonry = 50%
 Fiber Cement = 2%
 (Fiber cement includes all siding, trim, and columns)



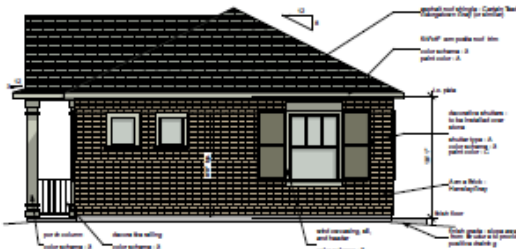
04 Left Elevation - 1A
 Scale: 1/8" = 1'-0"

Material Elevation Descriptions
 Masonry = 100%
 Fiber Cement = 0%
 (Fiber cement includes all siding, trim, and columns)



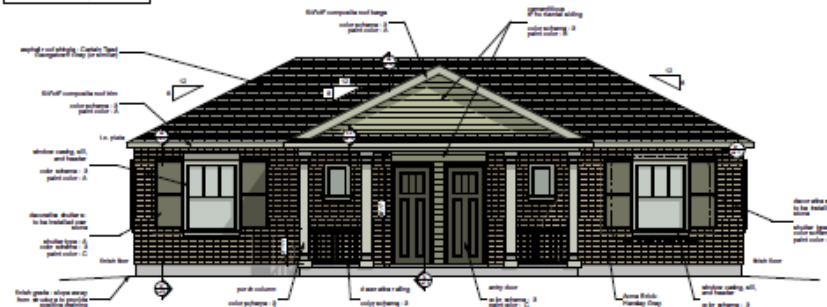
02 Rear Elevation - 1A
 Scale: 1/8" = 1'-0"

Material Elevation Descriptions
 Masonry = 50%
 Fiber Cement = 2%
 (Fiber cement includes all siding, trim, and columns)



03 Right Elevation - 1A
 Scale: 1/8" = 1'-0"

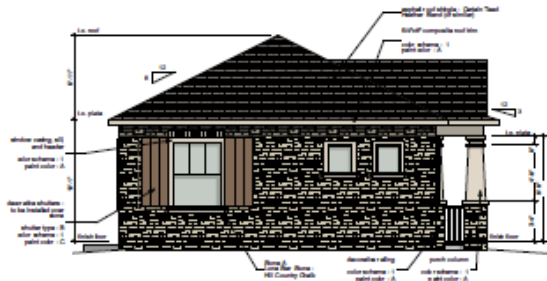
Material Elevation Descriptions
 Masonry = 72%
 Fiber Cement = 28%
 (Fiber cement includes all siding, trim, and columns)



01 Front Elevation - 1A
 Scale: 1/8" = 1'-0"

Elevations

Material Elevation Percentages
 Masonry = 50%
 Fiber Cement = 2%
 (Fiber cement includes all siding, trim, and columns)



04 Left Elevation - 1B

Material Elevation Percentages
 Masonry = 100%
 Fiber Cement = 0%
 (Fiber cement includes all siding, trim, and columns)



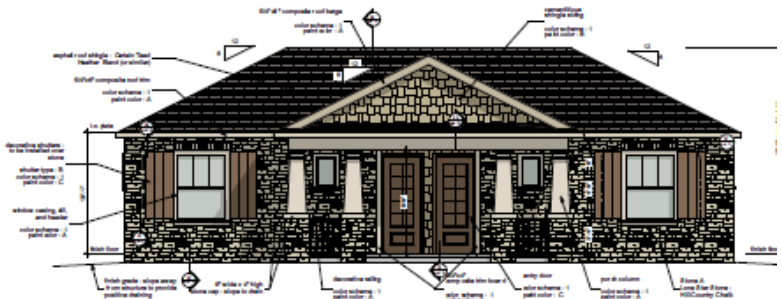
02 Rear Elevation - 1B

Material Elevation Percentages
 Masonry = 50%
 Fiber Cement = 2%
 (Fiber cement includes all siding, trim, and columns)



03 Right Elevation - 1B

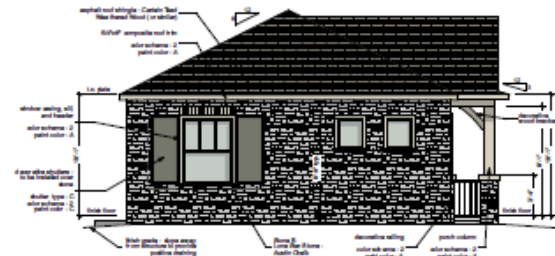
Material Elevation Percentages
 Masonry = 75%
 Fiber Cement = 20%
 (Fiber cement includes all siding, trim, and columns)



01 Front Elevation - 1B

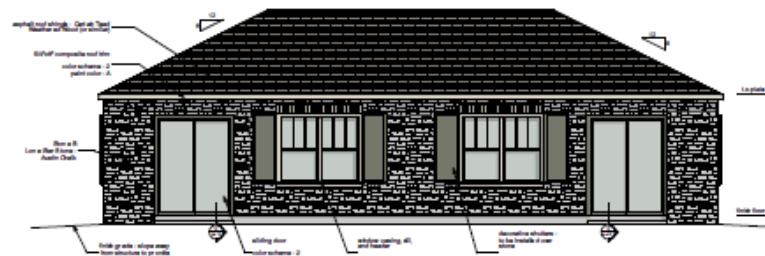
Elevations

Material Elevation Percentages
 Masonry = 98%
 Fiber Cement = 2%
 (Fiber cement includes all siding, trim, and columns)



04 Left Elevation - 1C
 SCALE: 1/8" = 1'-0"

Material Elevation Percentages
 Masonry = 100%
 Fiber Cement = 0%
 (Fiber cement includes all siding, trim, and columns)



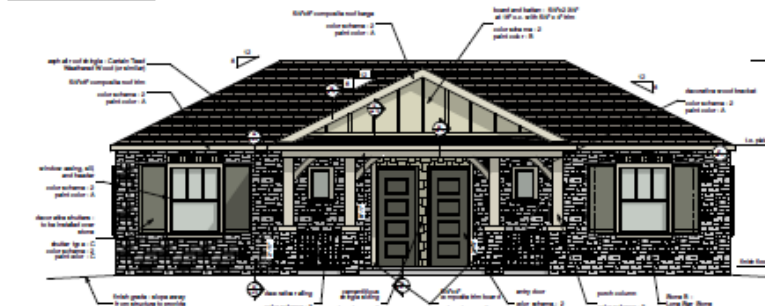
02 Rear Elevation - 1C
 SCALE: 1/8" = 1'-0"

Material Elevation Percentages
 Masonry = 98%
 Fiber Cement = 2%
 (Fiber cement includes all siding, trim, and columns)



03 Right Elevation - 1C
 SCALE: 1/8" = 1'-0"

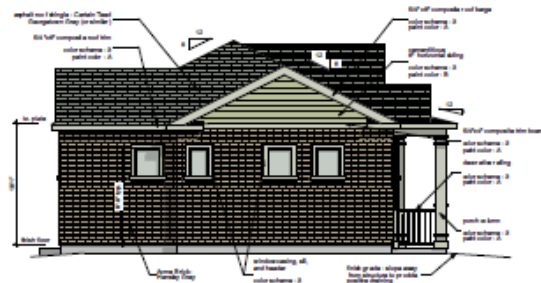
Material Elevation Percentages
 Masonry = 75%
 Fiber Cement = 25%
 (Fiber cement includes all siding, trim, and columns)



01 Front Elevation - 1C
 SCALE: 1/8" = 1'-0"

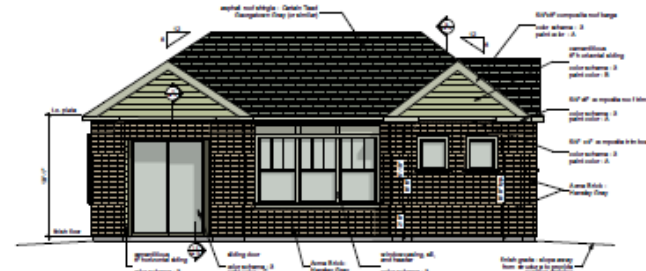
Elevations

Material Elevation Percentages:
Masonry = 65%
Fiber Cement = 15%
(Fiber cement includes all siding, trim, and columns)



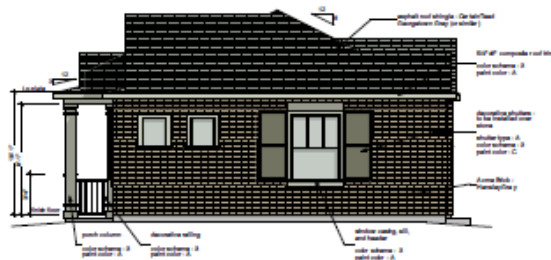
04 Left Elevation - 2A
Material = 100%

Material Elevation Percentages:
Masonry = 65%
Fiber Cement = 30%
(Fiber cement includes all siding, trim, and columns)



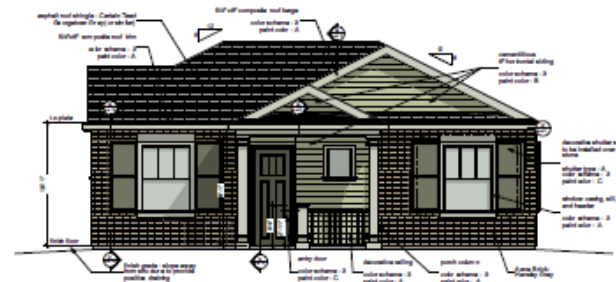
02 Rear Elevation - 2A
Material = 100%

Material Elevation Percentages:
Masonry = 50%
Fiber Cement = 4%
(Fiber cement includes all siding, trim, and columns)



03 Right Elevation - 2A
Material = 100%

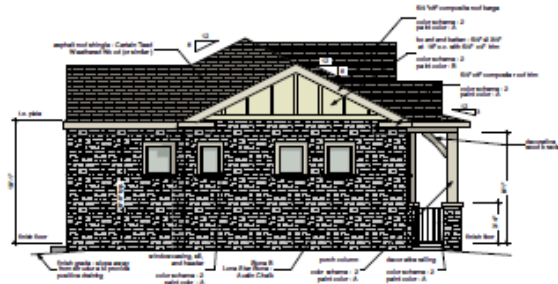
Material Elevation Percentages:
Masonry = 50%
Fiber Cement = 42%
(Fiber cement includes all siding, trim, and columns)



01 Front Elevation - 2A
Material = 100%

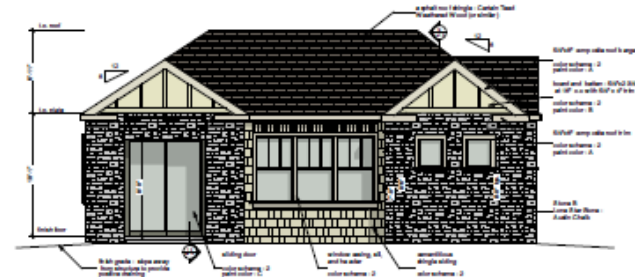
Elevations

Material Elevation Percentages
 Masonry = 85%
 Fiber Cement = 15%
 (Fiber cement includes all siding, trim, and columns)



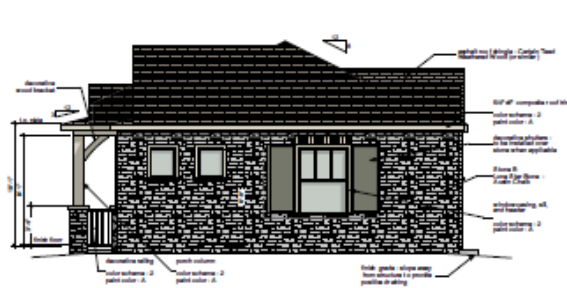
04 Left Elevation - 2C
 Stock cut = 1/2"

Material Elevation Percentages
 Masonry = 62%
 Fiber Cement = 38%
 (Fiber cement includes all siding, trim, and columns)



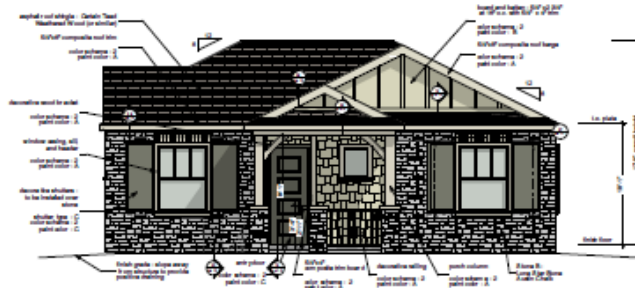
02 Rear Elevation - 2C
 Stock cut = 1/2"

Material Elevation Percentages
 Masonry = 80%
 Fiber Cement = 4%
 (Fiber cement includes all siding, trim, and columns)



03 Right Elevation - 2C
 Stock cut = 1/2"

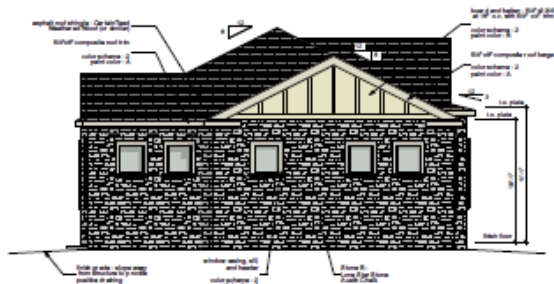
Material Elevation Percentages
 Masonry = 59%
 Fiber Cement = 42%
 (Fiber cement includes all siding, trim, and columns)



01 Front Elevation - 2C
 Stock cut = 1/2"

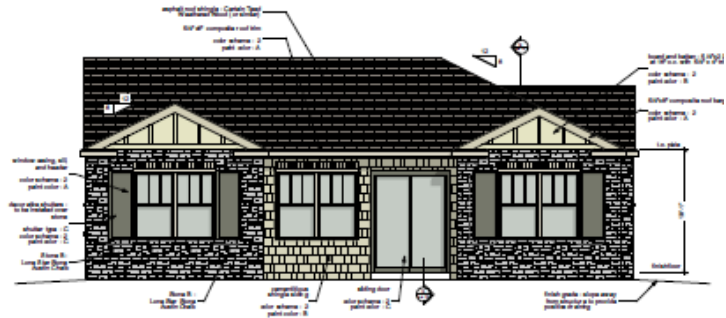
Elevations

Material Elevation Percentages
 Masonry = 83%
 Fiber Cement = 13%
 (Fiber cement includes siding, trim, and columns)



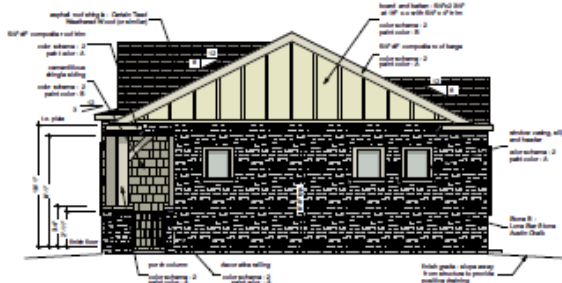
04 Left Elevation - 3C
 Stock Color = 17%

Material Elevation Percentages
 Masonry = 65%
 Fiber Cement = 33%
 (Fiber cement includes siding, trim, and columns)



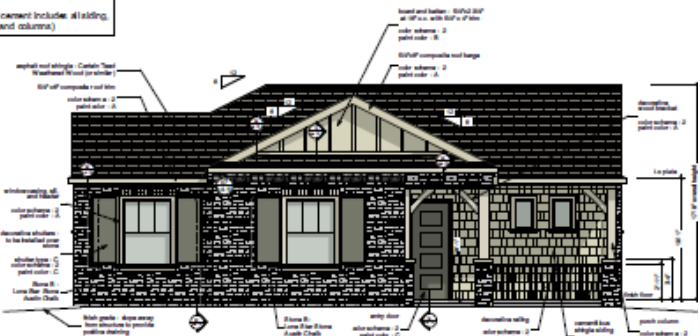
02 Rear Elevation - 3C
 Stock Color = 17%

Material Elevation Percentages
 Masonry = 82%
 Fiber Cement = 38%
 (Fiber cement includes siding, trim, and columns)



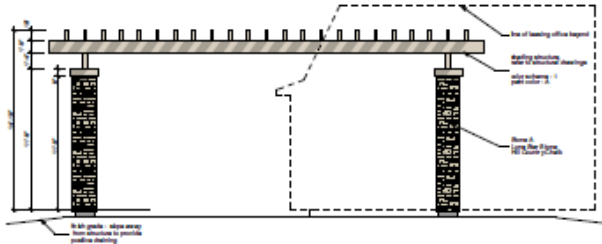
03 Right Elevation - 3C
 Stock Color = 17%

Material Elevation Percentages
 Masonry = 54%
 Fiber Cement = 46%
 (Fiber cement includes siding, trim, and columns)

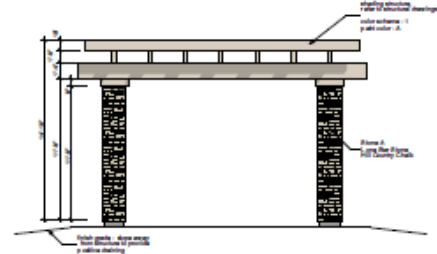


01 Front Elevation - 3C
 Stock Color = 17%

Elevations

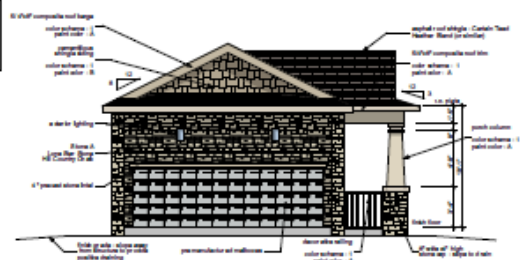


06 Pergola Front Elevation
Scale: 1/4" = 1'-0"



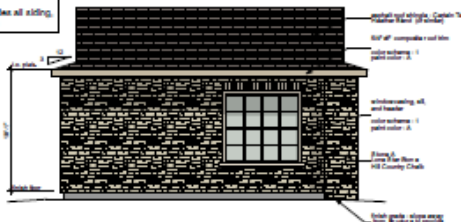
03 Pergola Side Elevation
Scale: 1/4" = 1'-0"

Material Elevation Percentages
Masonry = 72%
Floor Cement = 28%
(Floor cement includes all siding, trim, and columns)



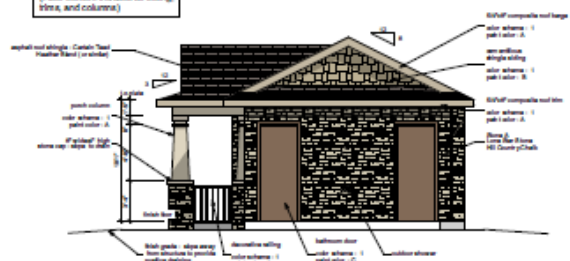
05 Left Elevation

Material Elevation Percentages
Masonry = 100%
Floor Cement = 0%
(Floor cement includes all siding, trim, and columns)



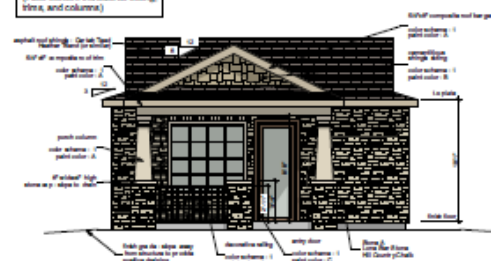
02 Rear Elevation

Material Elevation Percentages
Masonry = 71%
Floor Cement = 29%
(Floor cement includes all siding, trim, and columns)



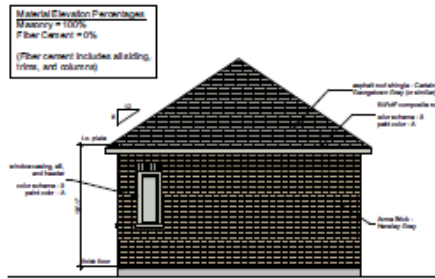
04 Right Elevation

Material Elevation Percentages
Masonry = 72%
Floor Cement = 27%
(Floor cement includes all siding, trim, and columns)

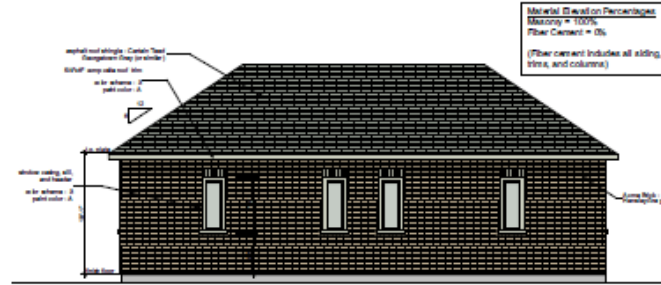


01 Front Elevation

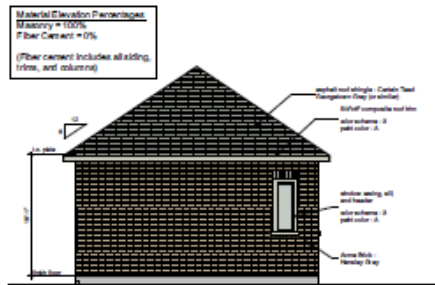
Elevations



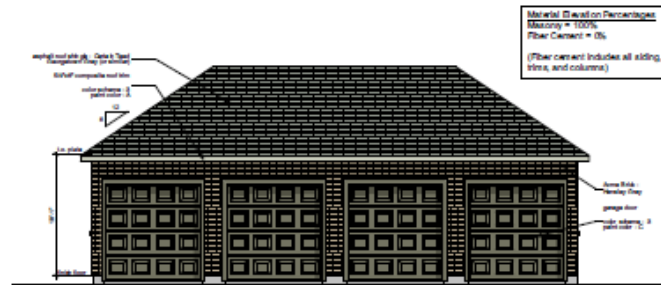
04 Left Elevation
Scale 1/8" = 1'-0"



02 Rear Elevation
Scale 1/8" = 1'-0"



03 Right Elevation
Scale 1/8" = 1'-0"



01 Front Elevation
Scale 1/8" = 1'-0"