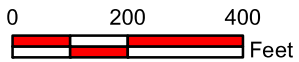
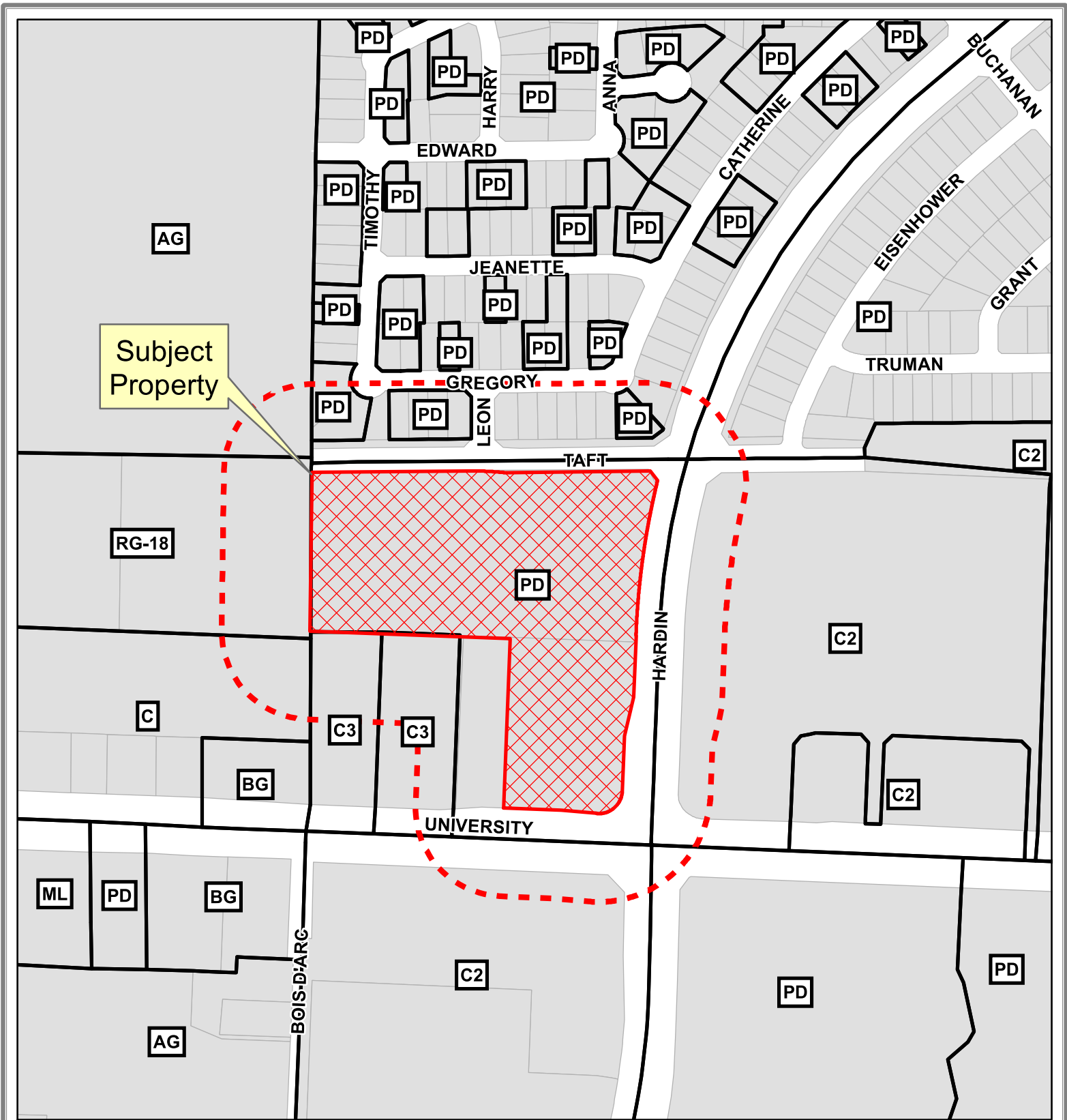
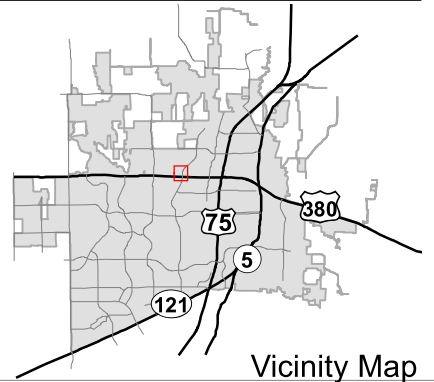


# Exhibit A



## Notification Map

Case: 17-276Z

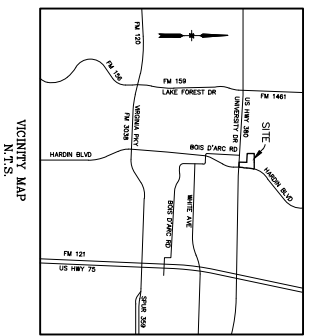
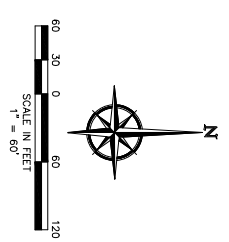
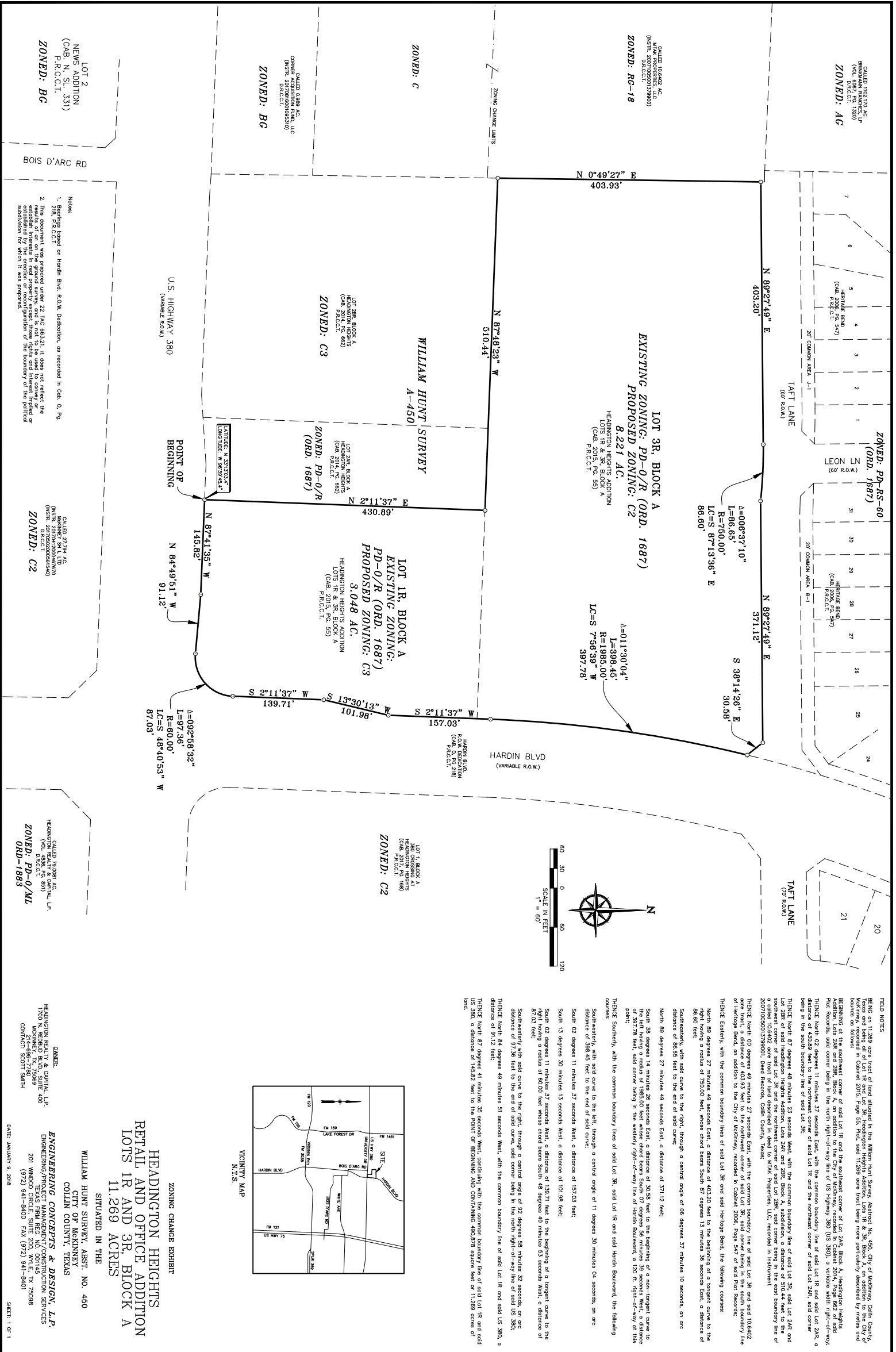


Vicinity Map

DISCLAIMER: This map and information contained in it were developed exclusively for use by the City of McKinney. Any use or reliance on this map by anyone else is at that party's risk and without liability to the City of McKinney, its officials or employees for any discrepancies, errors, or variances which may exist.

Path: S:\MCKGIS\Notification\Projects\2017\17-276Z.mxd

# Exhibit B



**FIELD NOTES**

BEING an 11.269 acre tract of land situated in the William Hunt Survey, Abstract No. 450, City of McKinney, Collin County, Texas and being all of Lot 1R and Lot 3R, Headington Heights Addition, Lots 1R & 3R, Block A, an addition to the City of McKinney, recorded in Cabinet 2015, Page 55, Plat, said 11.269 acre tract being more particularly described by means and recording of the said plat of record of said Lot 1R and the southeast corner of Lot 24R, Block A, Headington Heights Addition, Lots 24R and 28R, Block A, an addition to the City of McKinney, recorded in Cabinet 2014, Page 682 of said Plat Records, said corner being in the north right-of-way line of US Highway 380 (US 380), a variable width right-of-way; THENCE North 02 degrees 11 minutes 37 seconds East, with the common boundary line of said Lot 1R and said Lot 24R, a distance of 430.89 feet to the northwest corner of said Lot 1R and the northeast corner of said Lot 24R; said corner being in the south boundary line of said Lot 3R;

THENCE North 09 degrees 49 minutes 27 seconds East, with the common boundary line of said Lot 3R and said Lot 10.6402 acre tract, a distance of 403.93 feet to the northwest corner of said Lot 3R; said corner being in the south boundary line of Heritage Blvd, an addition to the City of McKinney, recorded in Cabinet 2006, Page 547 of said Plat Records; THENCE Eastward, with the common boundary line of said Lot 3R and said Heritage Blvd, the following courses:  
 North 89 degrees 27 minutes 49 seconds East, a distance of 403.20 feet to the beginning of a tangent curve to the right having a radius of 750.00 feet, whose chord bears South 87 degrees 13 minutes 36 seconds East, a distance of 86.60 feet;  
 Southward, with said curve to the right, through a central angle of 06 degrees 37 minutes 10 seconds, on arc distance of 86.60 feet to the end of said curve;  
 North 89 degrees 27 minutes 49 seconds East, a distance of 371.12 feet;  
 South 38 degrees 14 minutes 26 seconds East, a distance of 30.58 feet to the beginning of a non-tangent curve to the left having a radius of 1985.00 feet whose chord bears South 07 degrees 56 minutes 30 seconds West, a distance of 397.78 feet; said corner being in the westerly right-of-way line of Harbin Boulevard, a 120 ft. right-of-way at this point;

THENCE Southward, with the common boundary line of said Lot 3R, said Lot 1R and said Harbin Boulevard, the following courses:  
 Southward, with said curve to the left, through a central angle of 11 degrees 30 minutes 04 seconds, on arc distance of 397.78 feet to the end of said curve;  
 South 02 degrees 11 minutes 37 seconds West, a distance of 157.03 feet;  
 South 13 degrees 02 minutes 13 seconds West, a distance of 101.98 feet;  
 South 02 degrees 11 minutes 37 seconds West, a distance of 157.03 feet;  
 South 02 degrees 11 minutes 37 seconds West, a distance of 139.71 feet to the beginning of a tangent curve to the right having a radius of 60.00 feet whose chord bears South 48 degrees 40 minutes 53 seconds West, a distance of 87.03 feet;

Southward, with said curve to the right, through a central angle of 92 degrees 58 minutes 32 seconds, on arc distance of 97.36 feet to the end of said curve, said corner being in the north right-of-way line of said US 380, a distance of 97.36 feet;  
 THENCE North 84 degrees 49 minutes 51 seconds West, with the common boundary line of said Lot 1R and said US 380, a distance of 91.12 feet;  
 THENCE North 87 degrees 41 minutes 35 seconds West, with the common boundary line of said Lot 1R and said US 380, a distance of 145.82 feet to the POINT OF BEGINNING AND CONTAINING 490,875 square feet or 11.269 acres of land.

**HEADINGTON HEIGHTS  
 RETAIL AND OFFICE ADDITION  
 LOTS 1R AND 3R, BLOCK A  
 11.269 ACRES**

**WILLIAM HUNT SURVEY ABST. NO. 450  
 CITY OF MCKINNEY  
 COLLIN COUNTY, TEXAS**

**OWNER:**  
 HEADINGTON REALTY & CAPITAL, L.P.  
 1700 N. CENTRAL BLVD., SUITE 400  
 WYOMING, MISSOURI 64190  
 CONTACT: SCOTT SMITH  
 (972) 941-5900 FAX (972) 941-5901

**ENGINEERING/PROJECT MANAGEMENT/CONSTRUCTION SERVICES:**  
 201 WINDO CIRCLE, SUITE 2001, WELLS, TX 75098  
 (972) 941-5900 FAX (972) 941-5901

**DATE:** JANUARY 4, 2018

**SHEET:** 1 OF 1

**NOTES:**  
 1. Being based on Harbin Blvd. R.O.W. Dedication, as recorded in Cab. 0, Pg. 216, P.L.C.C.T.  
 2. This document was prepared under 22 TAC 643.21; it does not reflect the results of an on the ground survey, and is not to be used to convey or establish a valid property interest. This document is for informational purposes only and does not constitute a professional subdivision for which it was prepared.

**LOT 2  
 NEWS ADDITION  
 (CAB. N. SL. 331)  
 P.R.C.C.T.  
 ZONED: BC**

**CALL# 27724 AC  
 HEADINGTON HEIGHTS ADDITION  
 (CAB. N. SL. 331)  
 P.R.C.C.T.  
 ZONED: C2**

**CALL# 78,081 AC  
 HEADINGTON HEIGHTS ADDITION  
 (CAB. N. SL. 331)  
 P.R.C.C.T.  
 ZONED: PD-0/ML  
 ORD-1883**

**CALL# 10,640 AC  
 MAIN PROPERTIES, LLC  
 (CAB. N. SL. 331)  
 P.R.C.C.T.  
 ZONED: RC-18**

**CALL# 9,189 AC  
 CORNER ACQUISITION FUND, LLC  
 (INSTR. 207020200619430)  
 ZONED: BC**

**CALL# 248 AC  
 HEADINGTON HEIGHTS  
 (CAB. 2006, PG. 547)  
 P.R.C.C.T.  
 ZONED: C3**

**CALL# 248 AC  
 HEADINGTON HEIGHTS  
 (CAB. 2006, PG. 547)  
 P.R.C.C.T.  
 ZONED: PD-0/R  
 (ORD. 1687)**

**CALL# 248 AC  
 HEADINGTON HEIGHTS  
 (CAB. 2006, PG. 547)  
 P.R.C.C.T.  
 ZONED: PD-0/R  
 (ORD. 1687)**

**CALL# 248 AC  
 HEADINGTON HEIGHTS  
 (CAB. 2006, PG. 547)  
 P.R.C.C.T.  
 ZONED: PD-0/R  
 (ORD. 1687)**

**CALL# 248 AC  
 HEADINGTON HEIGHTS  
 (CAB. 2006, PG. 547)  
 P.R.C.C.T.  
 ZONED: PD-0/R  
 (ORD. 1687)**

**CALL# 248 AC  
 HEADINGTON HEIGHTS  
 (CAB. 2006, PG. 547)  
 P.R.C.C.T.  
 ZONED: PD-0/R  
 (ORD. 1687)**

**CALL# 248 AC  
 HEADINGTON HEIGHTS  
 (CAB. 2006, PG. 547)  
 P.R.C.C.T.  
 ZONED: PD-0/R  
 (ORD. 1687)**

**CALL# 248 AC  
 HEADINGTON HEIGHTS  
 (CAB. 2006, PG. 547)  
 P.R.C.C.T.  
 ZONED: PD-0/R  
 (ORD. 1687)**

**CALL# 248 AC  
 HEADINGTON HEIGHTS  
 (CAB. 2006, PG. 547)  
 P.R.C.C.T.  
 ZONED: PD-0/R  
 (ORD. 1687)**

**CALL# 248 AC  
 HEADINGTON HEIGHTS  
 (CAB. 2006, PG. 547)  
 P.R.C.C.T.  
 ZONED: PD-0/R  
 (ORD. 1687)**

**CALL# 248 AC  
 HEADINGTON HEIGHTS  
 (CAB. 2006, PG. 547)  
 P.R.C.C.T.  
 ZONED: PD-0/R  
 (ORD. 1687)**

**CALL# 248 AC  
 HEADINGTON HEIGHTS  
 (CAB. 2006, PG. 547)  
 P.R.C.C.T.  
 ZONED: PD-0/R  
 (ORD. 1687)**

**CALL# 248 AC  
 HEADINGTON HEIGHTS  
 (CAB. 2006, PG. 547)  
 P.R.C.C.T.  
 ZONED: PD-0/R  
 (ORD. 1687)**

**CALL# 248 AC  
 HEADINGTON HEIGHTS  
 (CAB. 2006, PG. 547)  
 P.R.C.C.T.  
 ZONED: PD-0/R  
 (ORD. 1687)**

**CALL# 248 AC  
 HEADINGTON HEIGHTS  
 (CAB. 2006, PG. 547)  
 P.R.C.C.T.  
 ZONED: PD-0/R  
 (ORD. 1687)**

**CALL# 248 AC  
 HEADINGTON HEIGHTS  
 (CAB. 2006, PG. 547)  
 P.R.C.C.T.  
 ZONED: PD-0/R  
 (ORD. 1687)**

**CALL# 248 AC  
 HEADINGTON HEIGHTS  
 (CAB. 2006, PG. 547)  
 P.R.C.C.T.  
 ZONED: PD-0/R  
 (ORD. 1687)**

**CALL# 248 AC  
 HEADINGTON HEIGHTS  
 (CAB. 2006, PG. 547)  
 P.R.C.C.T.  
 ZONED: PD-0/R  
 (ORD. 1687)**

**CALL# 248 AC  
 HEADINGTON HEIGHTS  
 (CAB. 2006, PG. 547)  
 P.R.C.C.T.  
 ZONED: PD-0/R  
 (ORD. 1687)**

**CALL# 248 AC  
 HEADINGTON HEIGHTS  
 (CAB. 2006, PG. 547)  
 P.R.C.C.T.  
 ZONED: PD-0/R  
 (ORD. 1687)**

**CALL# 248 AC  
 HEADINGTON HEIGHTS  
 (CAB. 2006, PG. 547)  
 P.R.C.C.T.  
 ZONED: PD-0/R  
 (ORD. 1687)**

**CALL# 248 AC  
 HEADINGTON HEIGHTS  
 (CAB. 2006, PG. 547)  
 P.R.C.C.T.  
 ZONED: PD-0/R  
 (ORD. 1687)**

**CALL# 248 AC  
 HEADINGTON HEIGHTS  
 (CAB. 2006, PG. 547)  
 P.R.C.C.T.  
 ZONED: PD-0/R  
 (ORD. 1687)**

**CALL# 248 AC  
 HEADINGTON HEIGHTS  
 (CAB. 2006, PG. 547)  
 P.R.C.C.T.  
 ZONED: PD-0/R  
 (ORD. 1687)**

**CALL# 248 AC  
 HEADINGTON HEIGHTS  
 (CAB. 2006, PG. 547)  
 P.R.C.C.T.  
 ZONED: PD-0/R  
 (ORD. 1687)**

**CALL# 248 AC  
 HEADINGTON HEIGHTS  
 (CAB. 2006, PG. 547)  
 P.R.C.C.T.  
 ZONED: PD-0/R  
 (ORD. 1687)**

**CALL# 248 AC  
 HEADINGTON HEIGHTS  
 (CAB. 2006, PG. 547)  
 P.R.C.C.T.  
 ZONED: PD-0/R  
 (ORD. 1687)**

**CALL# 248 AC  
 HEADINGTON HEIGHTS  
 (CAB. 2006, PG. 547)  
 P.R.C.C.T.  
 ZONED: PD-0/R  
 (ORD. 1687)**

**CALL# 248 AC  
 HEADINGTON HEIGHTS  
 (CAB. 2006, PG. 547)  
 P.R.C.C.T.  
 ZONED: PD-0/R  
 (ORD. 1687)**

**CALL# 248 AC  
 HEADINGTON HEIGHTS  
 (CAB. 2006, PG. 547)  
 P.R.C.C.T.  
 ZONED: PD-0/R  
 (ORD. 1687)**

**CALL# 248 AC  
 HEADINGTON HEIGHTS  
 (CAB. 2006, PG. 547)  
 P.R.C.C.T.  
 ZONED: PD-0/R  
 (ORD. 1687)**

**CALL# 248 AC  
 HEADINGTON HEIGHTS  
 (CAB. 2006, PG. 547)  
 P.R.C.C.T.  
 ZONED: PD-0/R  
 (ORD. 1687)**

**CALL# 248 AC  
 HEADINGTON HEIGHTS  
 (CAB. 2006, PG. 547)  
 P.R.C.C.T.  
 ZONED: PD-0/R  
 (ORD. 1687)**

**CALL# 248 AC  
 HEADINGTON HEIGHTS  
 (CAB. 2006, PG. 547)  
 P.R.C.C.T.  
 ZONED: PD-0/R  
 (ORD. 1687)**

**CALL# 248 AC  
 HEADINGTON HEIGHTS  
 (CAB. 2006, PG. 547)  
 P.R.C.C.T.  
 ZONED: PD-0/R  
 (ORD. 1687)**

**CALL# 248 AC  
 HEADINGTON HEIGHTS  
 (CAB. 2006, PG. 547)  
 P.R.C.C.T.  
 ZONED: PD-0/R  
 (ORD. 1687)**

**CALL# 248 AC  
 HEADINGTON HEIGHTS  
 (CAB. 2006, PG. 547)  
 P.R.C.C.T.  
 ZONED: PD-0/R  
 (ORD. 1687)**

**CALL# 248 AC  
 HEADINGTON HEIGHTS  
 (CAB. 2006, PG. 547)  
 P.R.C.C.T.  
 ZONED: PD-0/R  
 (ORD. 1687)**

**CALL# 248 AC  
 HEADINGTON HEIGHTS  
 (CAB. 2006, PG. 547)  
 P.R.C.C.T.  
 ZONED: PD-0/R  
 (ORD. 1687)**

**CALL# 248 AC  
 HEADINGTON HEIGHTS  
 (CAB. 2006, PG. 547)  
 P.R.C.C.T.  
 ZONED: PD-0/R  
 (ORD. 1687)**

**CALL# 248 AC  
 HEADINGTON HEIGHTS  
 (CAB. 2006, PG. 547)  
 P.R.C.C.T.  
 ZONED: PD-0/R  
 (ORD. 1687)**

**CALL# 248 AC  
 HEADINGTON HEIGHTS  
 (CAB. 2006, PG. 547)  
 P.R.C.C.T.  
 ZONED: PD-0/R  
 (ORD. 1687)**

**CALL# 248 AC  
 HEADINGTON HEIGHTS  
 (CAB. 2006, PG. 547)  
 P.R.C.C.T.  
 ZONED: PD-0/R  
 (ORD. 1687)**

**CALL# 248 AC  
 HEADINGTON HEIGHTS  
 (CAB. 2006, PG. 547)  
 P.R.C.C.T.  
 ZONED: PD-0/R  
 (ORD. 1687)**

**CALL# 248 AC  
 HEADINGTON HEIGHTS  
 (CAB. 2006, PG. 547)  
 P.R.C.C.T.  
 ZONED: PD-0/R  
 (ORD. 1687)**

**CALL# 248 AC  
 HEADINGTON HEIGHTS  
 (CAB. 2006, PG. 547)  
 P.R.C.C.T.  
 ZONED: PD-0/R  
 (ORD. 1687)**

**CALL# 248 AC  
 HEADINGTON HEIGHTS  
 (CAB. 2006, PG. 547)  
 P.R.C.C.T.  
 ZONED: PD-0/R  
 (ORD. 1687)**

**CALL# 248 AC  
 HEADINGTON HEIGHTS  
 (CAB. 2006, PG. 547)  
 P.R.C.C.T.  
 ZONED: PD-0/R  
 (ORD. 1687)**

**CALL# 248 AC  
 HEADINGTON HEIGHTS  
 (CAB. 2006, PG. 547)  
 P.R.C.C.T.  
 ZONED: PD-0/R  
 (ORD. 1687)**

**CALL# 248 AC  
 HEADINGTON HEIGHTS  
 (CAB. 2006, PG. 547)  
 P.R.C.C.T.  
 ZONED: PD-0/R  
 (ORD. 1687)**

**CALL# 248 AC  
 HEADINGTON HEIGHTS  
 (CAB. 2006, PG. 547)  
 P.R.C.C.T.  
 ZONED: PD-0/R  
 (ORD. 1687)**

**CALL# 248 AC  
 HEADINGTON HEIGHTS  
 (CAB. 2006, PG. 547)  
 P.R.C.C.T.  
 ZONED: PD-0/R  
 (ORD. 1687)**

**CALL# 248 AC  
 HEADINGTON HEIGHTS  
 (CAB. 2006, PG. 547)  
 P.R.C.C.T.  
 ZONED: PD-0/R  
 (ORD. 1687)**

**CALL# 248 AC  
 HEADINGTON HEIGHTS  
 (CAB. 2006, PG. 547)  
 P.R.C.C.T.  
 ZONED: PD-0/R  
 (ORD. 1687)**

**CALL# 248 AC  
 HEADINGTON HEIGHTS  
 (CAB. 2006, PG. 547)  
 P.R.C.C.T.  
 ZONED: PD-0/R  
 (ORD. 1687)**

**CALL# 248 AC  
 HEADINGTON HEIGHTS  
 (CAB. 2006, PG. 547)  
 P.R.C.C.T.  
 ZONED: PD-0/R  
 (ORD. 1687)**

**CALL# 248 AC  
 HEADINGTON HEIGHTS  
 (CAB. 2006, PG. 547)  
 P.R.C.C.T.  
 ZONED: PD-0/R  
 (ORD. 1687)**

**CALL# 248 AC  
 HEADINGTON HEIGHTS  
 (CAB. 2006, PG. 547)  
 P.R.C.C.T.  
 ZONED: PD-0/R  
 (ORD. 1687)**

**CALL# 248 AC  
 HEADINGTON HEIGHTS  
 (CAB. 2006, PG. 547)  
 P.R.C.C.T.  
 ZONED: PD-0/R  
 (ORD. 1687)**

**CALL# 248 AC  
 HEADINGTON HEIGHTS  
 (CAB. 2006, PG. 547)  
 P.R.C.C.T.  
 ZONED: PD-0/R  
 (ORD. 1687)**

**CALL# 248 AC  
 HEADINGTON HEIGHTS  
 (CAB. 2006, PG. 547)  
 P.R.C.C.T.  
 ZONED: PD-0/R  
 (ORD. 1687)**

**CALL# 248 AC  
 HEADINGTON HEIGHTS  
 (CAB. 2006, PG. 547)  
 P.R.C.C.T.  
 ZONED: PD-0/R  
 (ORD. 1687)**

**CALL# 248 AC  
 HEADINGTON HEIGHTS  
 (CAB. 2006, PG. 547)  
 P.R.C.C.T.  
 ZONED: PD-0/R  
 (ORD. 1687)**

**CALL# 248 AC  
 HEADINGTON HEIGHTS  
 (CAB. 2006, PG. 547)  
 P.R.C.C.T.  
 ZONED: PD-0/R  
 (ORD. 1687)**

**CALL# 248 AC  
 HEADINGTON HEIGHTS  
 (CAB. 2006, PG. 547)  
 P.R.C.C.T.  
 ZONED: PD-0/R  
 (ORD. 1687)**

**CALL# 248 AC  
 HEADINGTON HEIGHTS  
 (CAB. 2006, PG. 547)  
 P.R.C.C.T.  
 ZONED: PD-0/R  
 (ORD. 1687)**

**CALL# 248 AC  
 HEADINGTON HEIGHTS  
 (CAB. 2006, PG. 547)  
 P.R.C.C.T.  
 ZONED: PD-0/R  
 (ORD. 1687)**

**CALL# 248 AC  
 HEADINGTON HEIGHTS  
 (CAB. 2006, PG. 547)  
 P.R.C.C.T.  
 ZONED: PD-0/R  
 (ORD. 1687)**

**CALL# 248 AC  
 HEADINGTON HEIGHTS  
 (CAB. 2006, PG. 547)  
 P.R.C.C.T.  
 ZONED: PD-0/R  
 (ORD. 1687)**

**CALL# 248 AC  
 HEADINGTON HEIGHTS  
 (CAB. 2006, PG. 547)  
 P.R.C.C.T.  
 ZONED: PD-0/R  
 (ORD. 1687)**

**CALL# 248 AC  
 HEADINGTON HEIGHTS  
 (CAB. 2006, PG. 547)  
 P.R.C.C.T.  
 ZONED: PD-0/R  
 (ORD. 1687)**

**CALL# 248 AC  
 HEADINGTON HEIGHTS  
 (CAB. 2006, PG. 547)  
 P.R.C.C.T.  
 ZONED: PD-0/R  
 (ORD. 1687)**

**CALL# 248 AC  
 HEADINGTON HEIGHTS  
 (CAB. 2006, PG. 547)  
 P.R.C.C.T.  
 ZONED: PD-0/R  
 (ORD. 1687)**

**CALL# 248 AC  
 HEADINGTON HEIGHTS  
 (CAB. 2006, PG. 547)  
 P.R.C.C.T.  
 ZONED: PD-0/R  
 (ORD. 1687)**

**CALL# 248 AC  
 HEADINGTON HEIGHTS  
 (CAB. 2006, PG. 547)  
 P.R.C.C.T.  
 ZONED: PD-0/R  
 (ORD. 1687)**

**CALL# 248 AC  
 HEADINGTON HEIGHTS  
 (CAB. 2006, PG. 547)  
 P.R.C.C.T.  
 ZONED: PD-0/R  
 (ORD. 1687)**

**CALL# 248 AC  
 HEADINGTON HEIGHTS  
 (CAB. 2006, PG. 547)  
 P.R.C.C.T.  
 ZONED: PD-0/R  
 (ORD. 1687)**

**CALL# 248 AC  
 HEADINGTON HEIGHTS  
 (CAB. 2006, PG. 547)  
 P.R.C.C.T.  
 ZONED: PD-0/R  
 (ORD. 1687)**

**CALL# 248 AC  
 HEADINGTON HEIGHTS  
 (CAB. 2006, PG. 547)  
 P.R.C.C.T.  
 ZONED: PD-0/R  
 (ORD. 1687)**

**CALL# 248 AC  
 HEADINGTON HEIGHTS  
 (CAB. 2006, PG. 547)  
 P.R.C.C.T.  
 ZONED: PD-0/R  
 (ORD. 1687)**

**CALL# 248 AC  
 HEADINGTON HEIGHTS  
 (CAB. 2006, PG. 547)  
 P.R.C.C.T.  
 ZONED: PD-0/R  
 (ORD. 1687)**

**CALL# 248 AC  
 HEADINGTON HEIGHTS  
 (CAB. 2006, PG. 547)  
 P.R.C.C.T.  
 ZONED: PD-0/R  
 (ORD. 1687)**

**CALL# 248 AC  
 HEADINGTON HEIGHTS  
 (CAB. 2006, PG. 547)  
 P.R.C.C.T.  
 ZONED: PD-0/R  
 (ORD. 1687)**

**CALL# 248 AC  
 HEADINGTON HEIGHTS  
 (CAB. 2006, PG. 547)  
 P.R.C.C.T.  
 ZONED: PD-0/R  
 (ORD. 1687)**

**CALL# 248 AC  
 HEADINGTON HEIGHTS  
 (CAB. 2006, PG. 547)  
 P.R.C.C.T.  
 ZONED: PD-0/R  
 (ORD. 1687)**