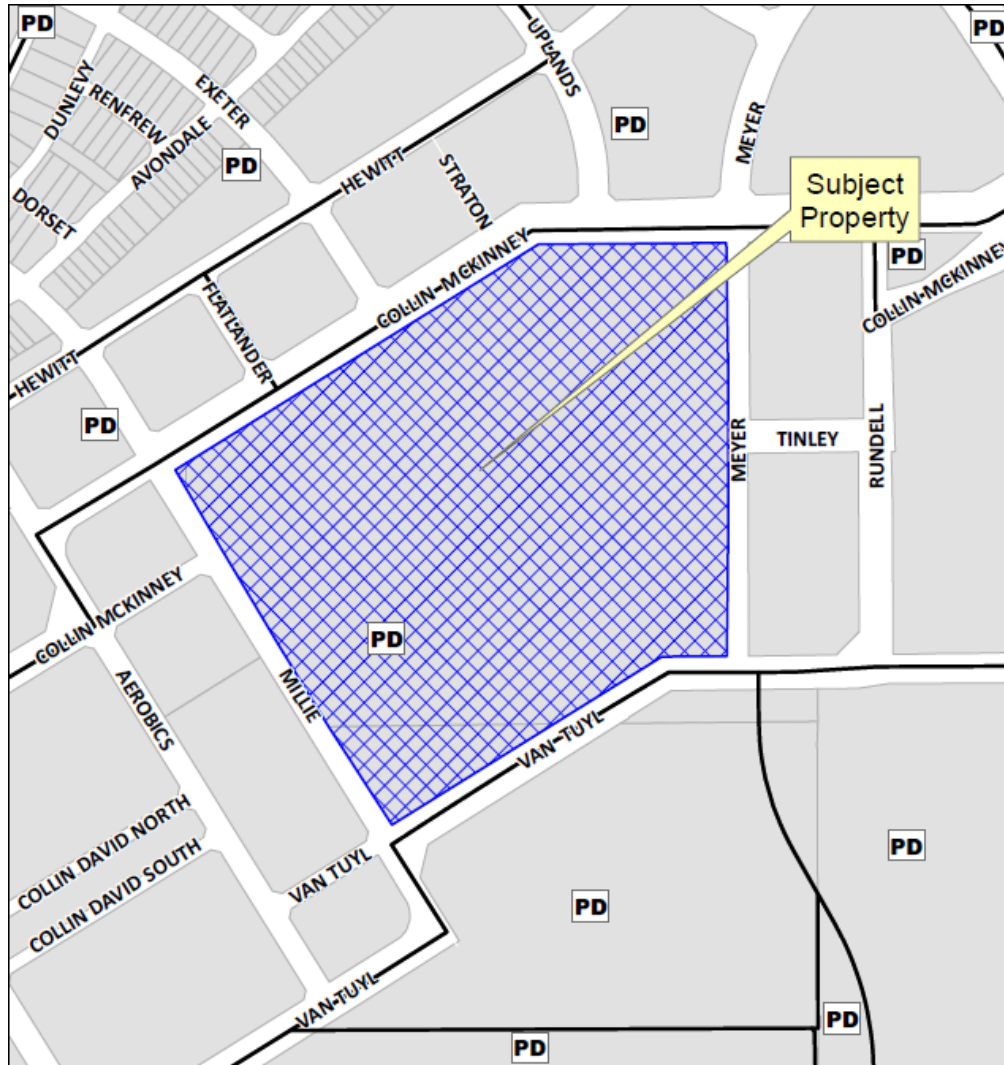


Spicewood at Craig Ranch  
Preliminary-Final Plat  
14-321PF



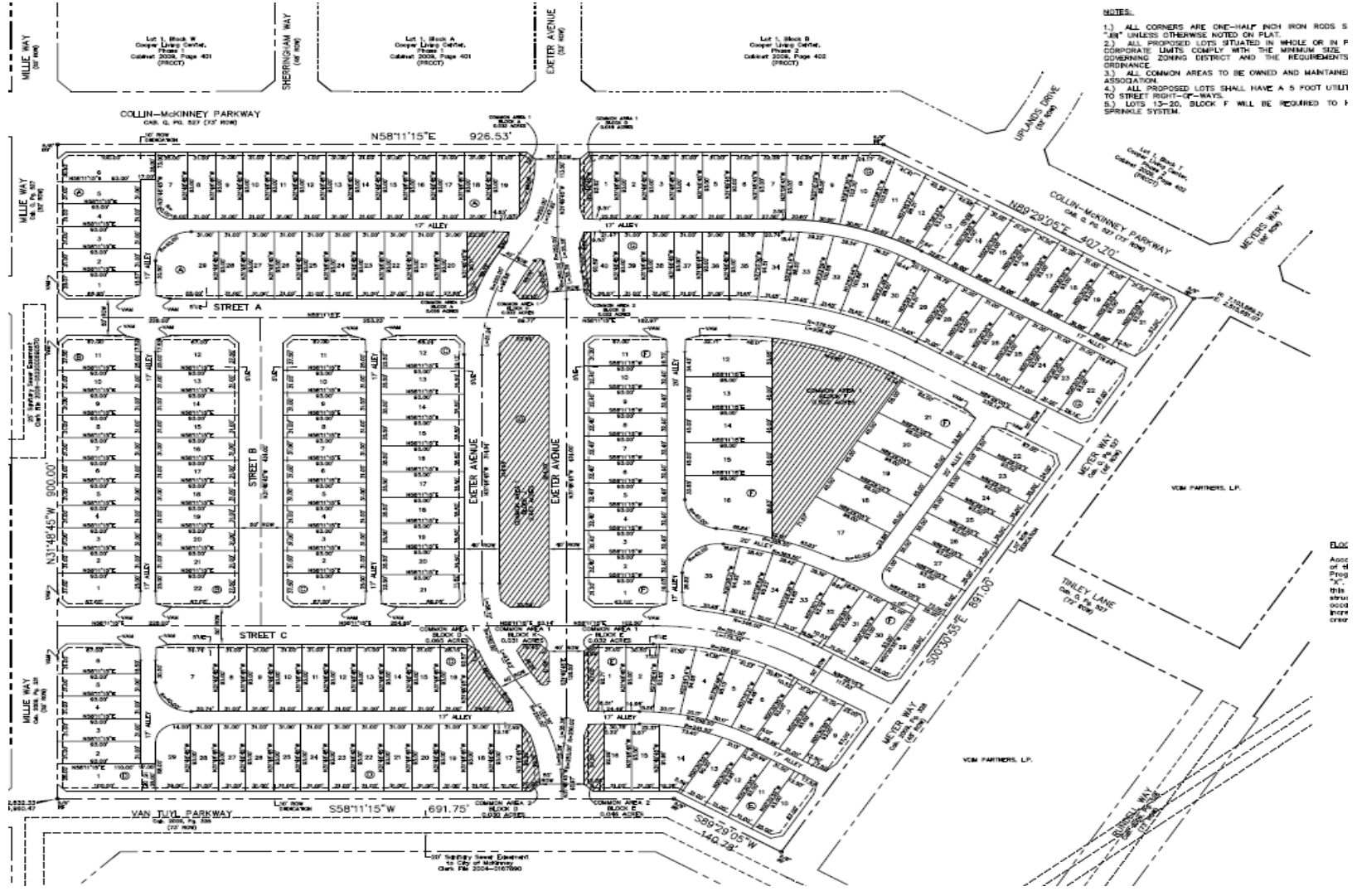
# Location Map



# Aerial Exhibit



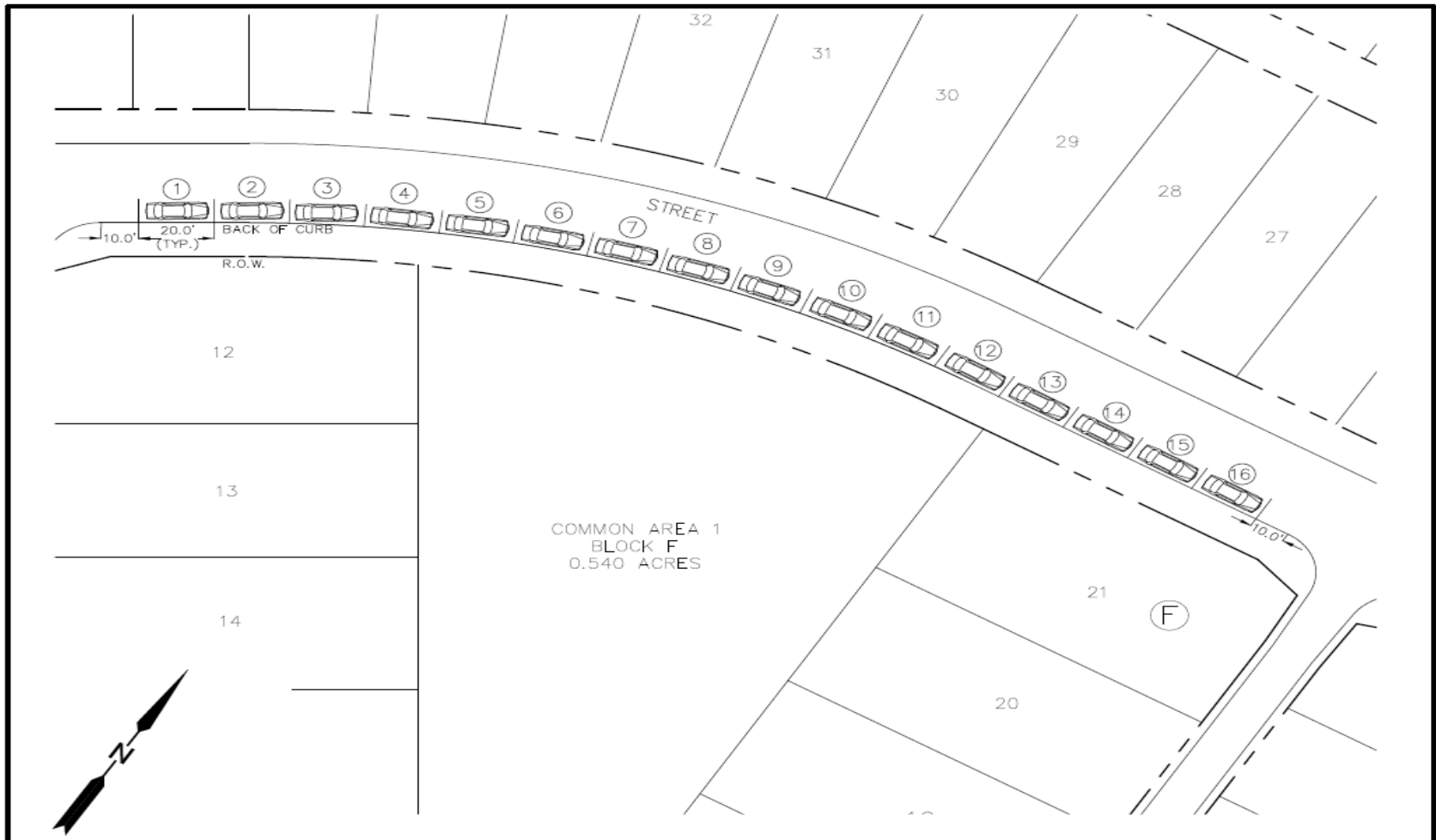
# Proposed Preliminary-Final Plat



# Common Area Exhibit



# Parking Exhibit



	SCALE: 1"=40'	DATE 2-4-15	PROJECT CTR014-PARKING EXHIBIT	16301 QUORUM DRIVE, SUITE 200B ADDISON, TEXAS 75001	
--	------------------	----------------	-----------------------------------	--	--