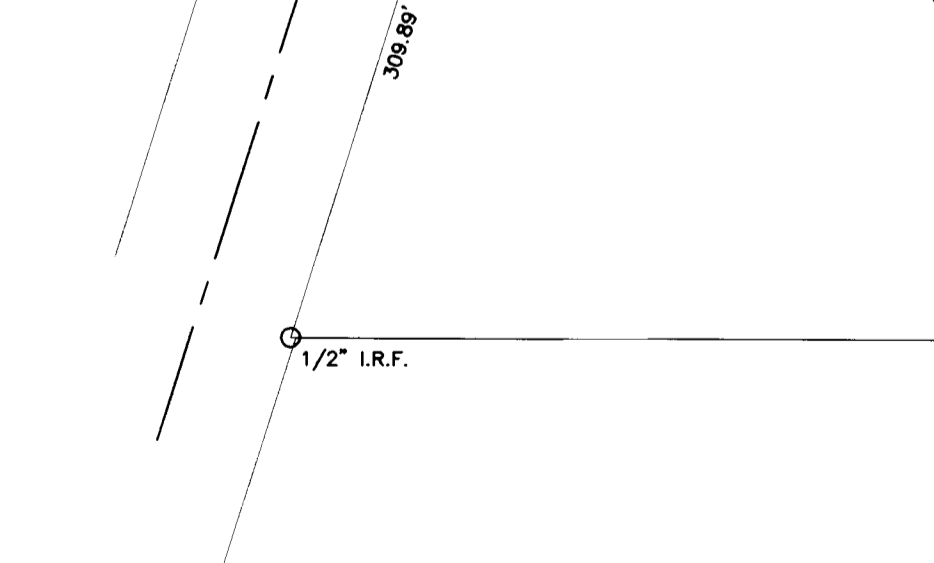
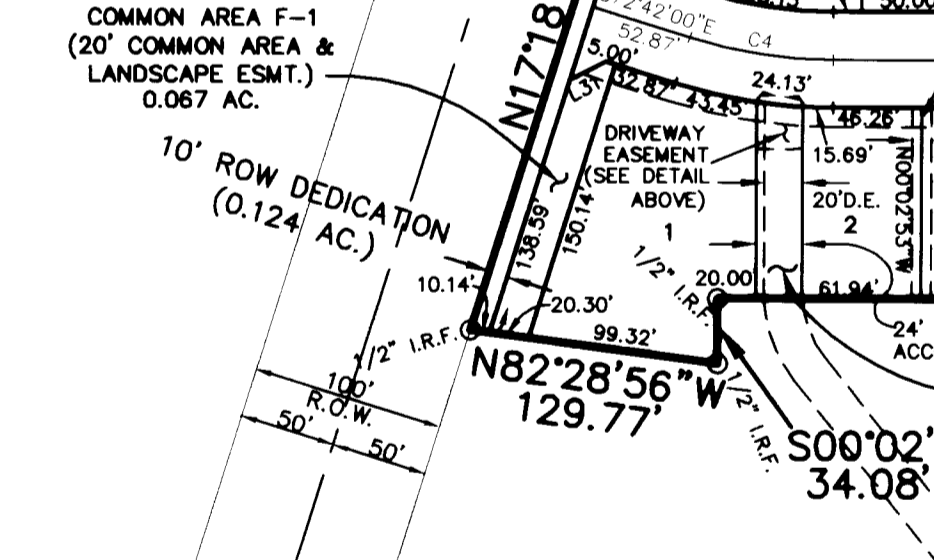
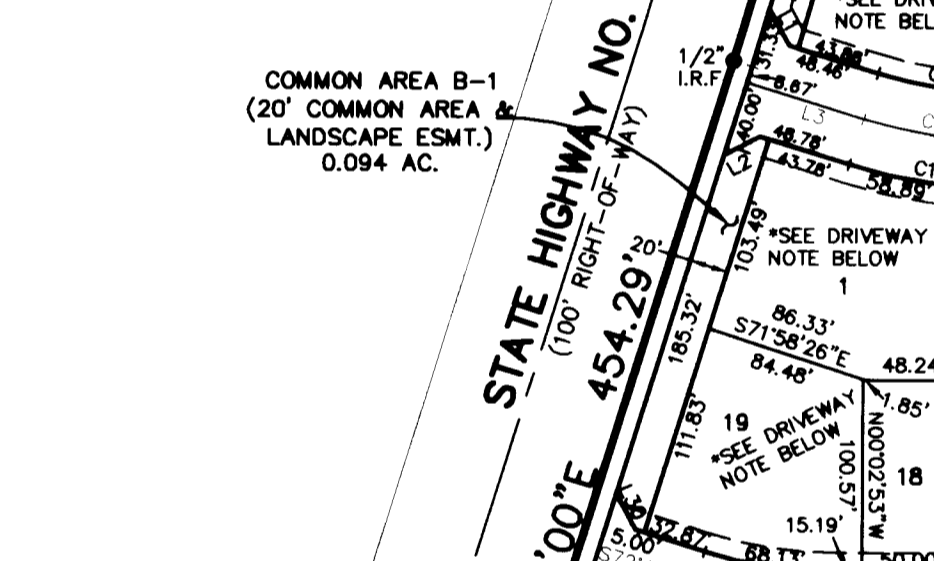
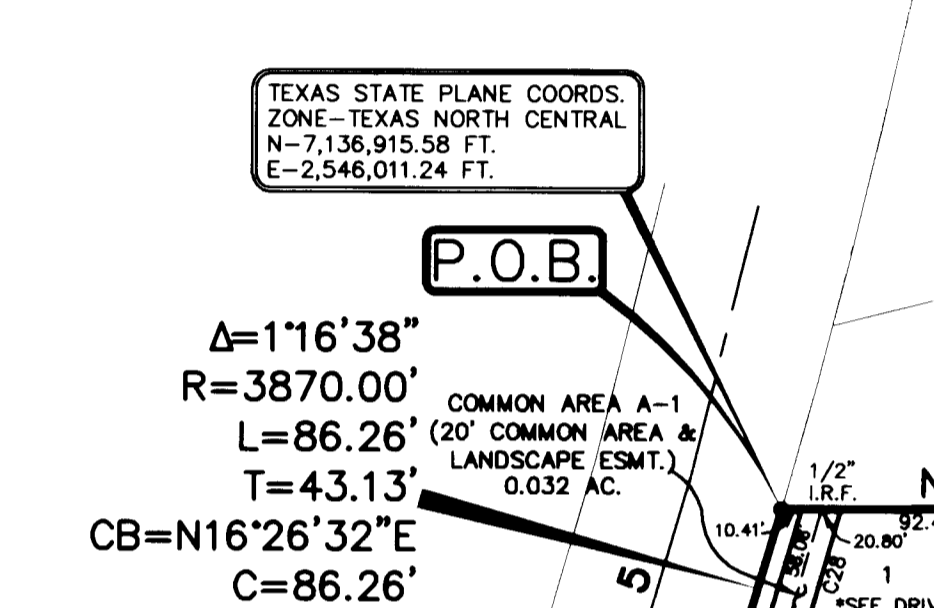
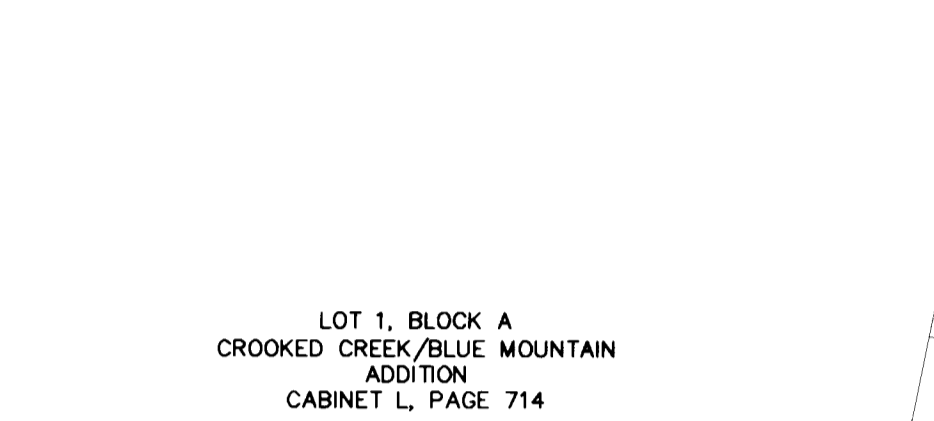
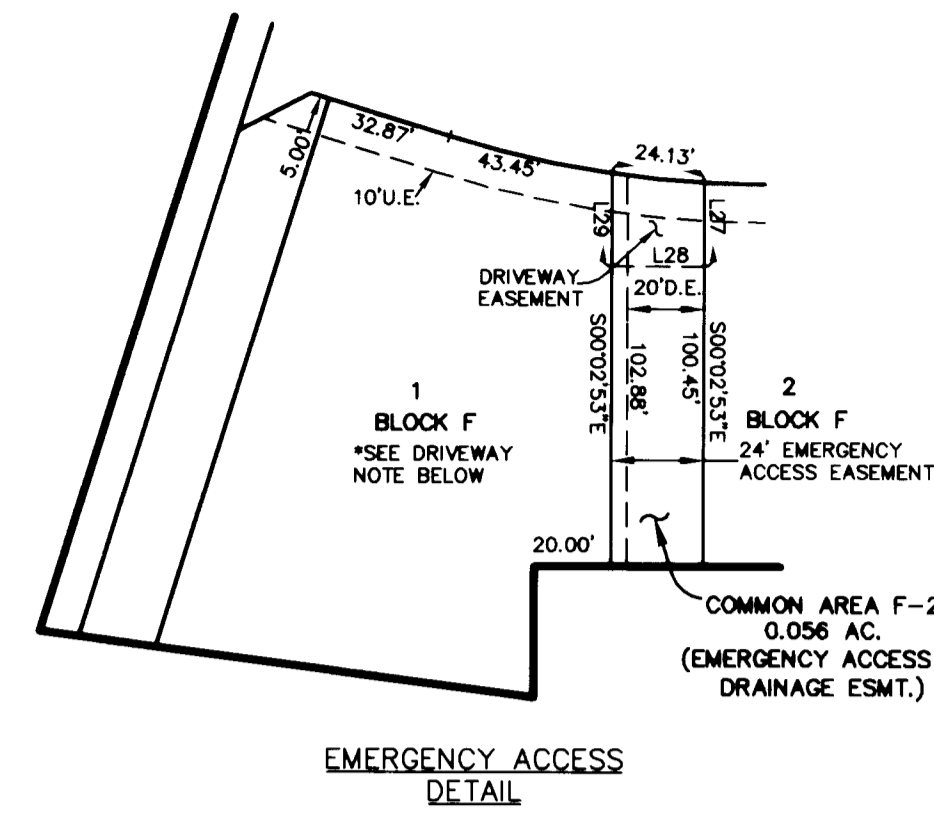


8347



LOT 1, BLOCK A
CROOKED CREEK/BLUE MOUNTAIN
ADDITION
CABINET L, PAGE 714

TEXAS STATE PLANE COORDS.
ZONE-Texas North Central
N=7,136,915.58 FT.
E=2,546,011.24 FT.

COMMON AREA A-1
(20' COMMON AREA &
LANDSCAPE ESMT.)
0.032 AC.

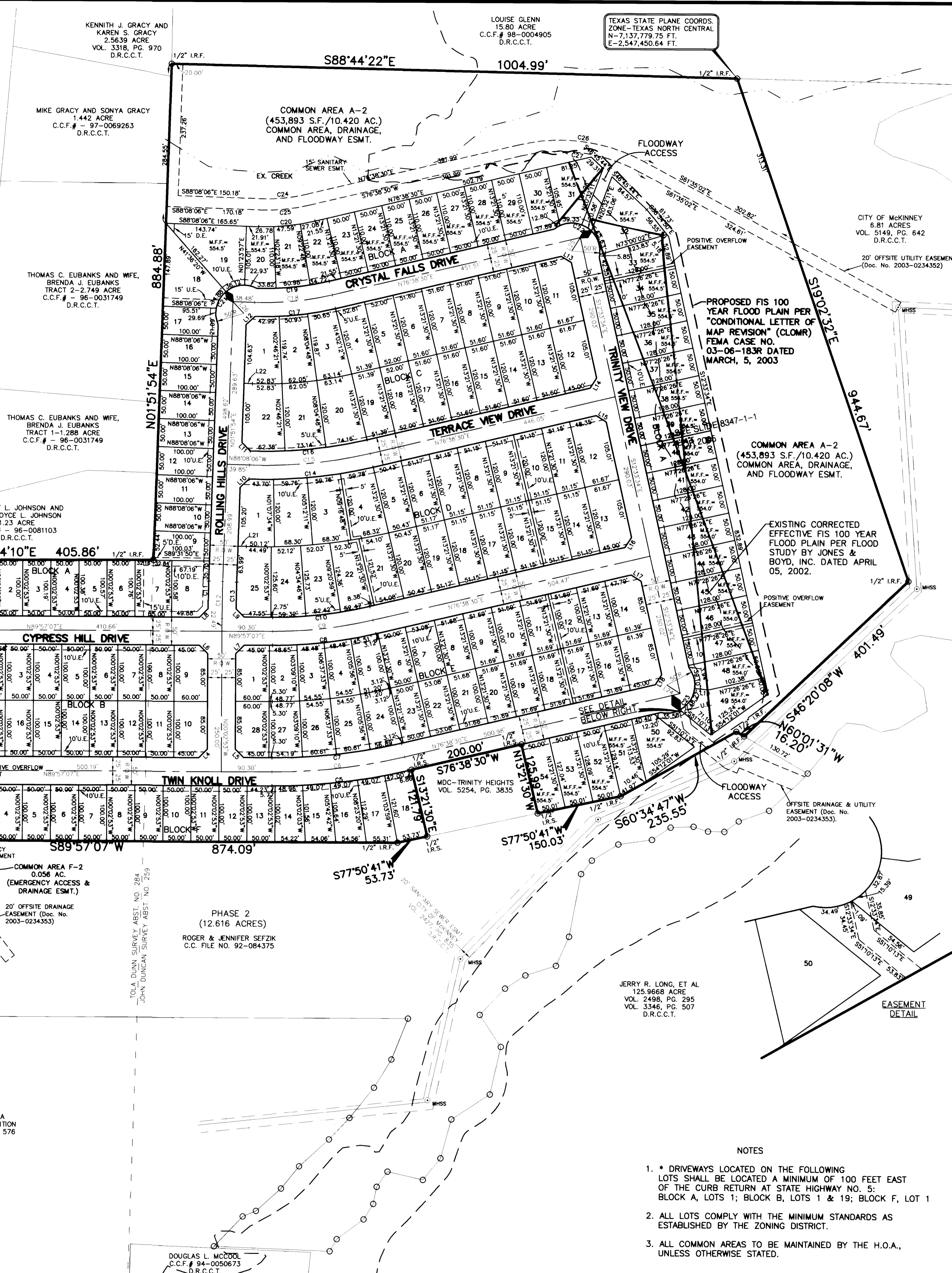
COMMON AREA B-1
(20' COMMON AREA &
LANDSCAPE ESMT.)
0.094 AC.

COMMON AREA F-1
(20' COMMON AREA &
LANDSCAPE ESMT.)
0.087 AC.

COMMON AREA F-2
(EMERGENCY ACCESS &
DRAINAGE ESMT.)
0.056 AC.

LOT 1, BLOCK A
CREEK POINT ADDITION
CABINET M, PAGE 576

FROM: R-6284-000-0130-1 7.7058 AC
FROM: R-6257-000-0140-1 32.8042 AC
FROM: _____ YEAR: 2004

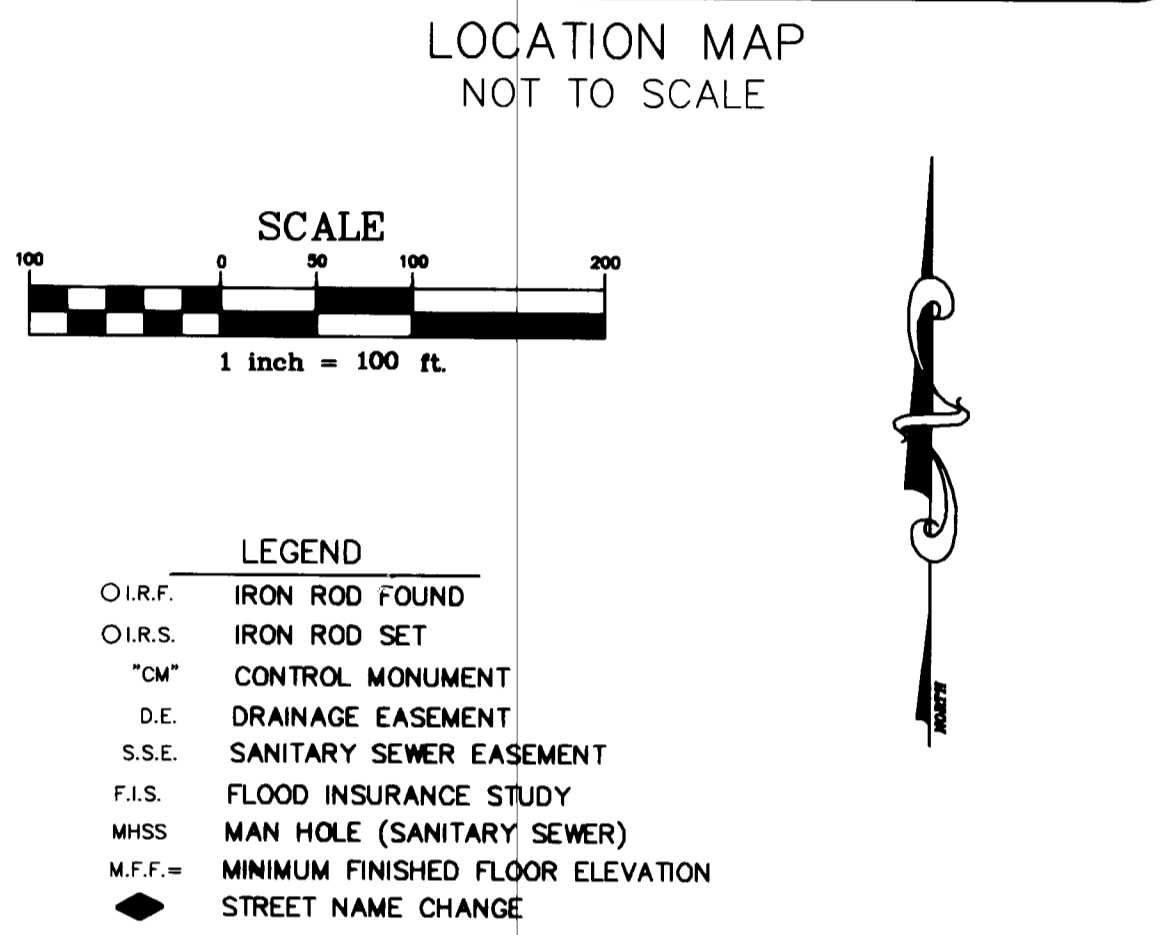
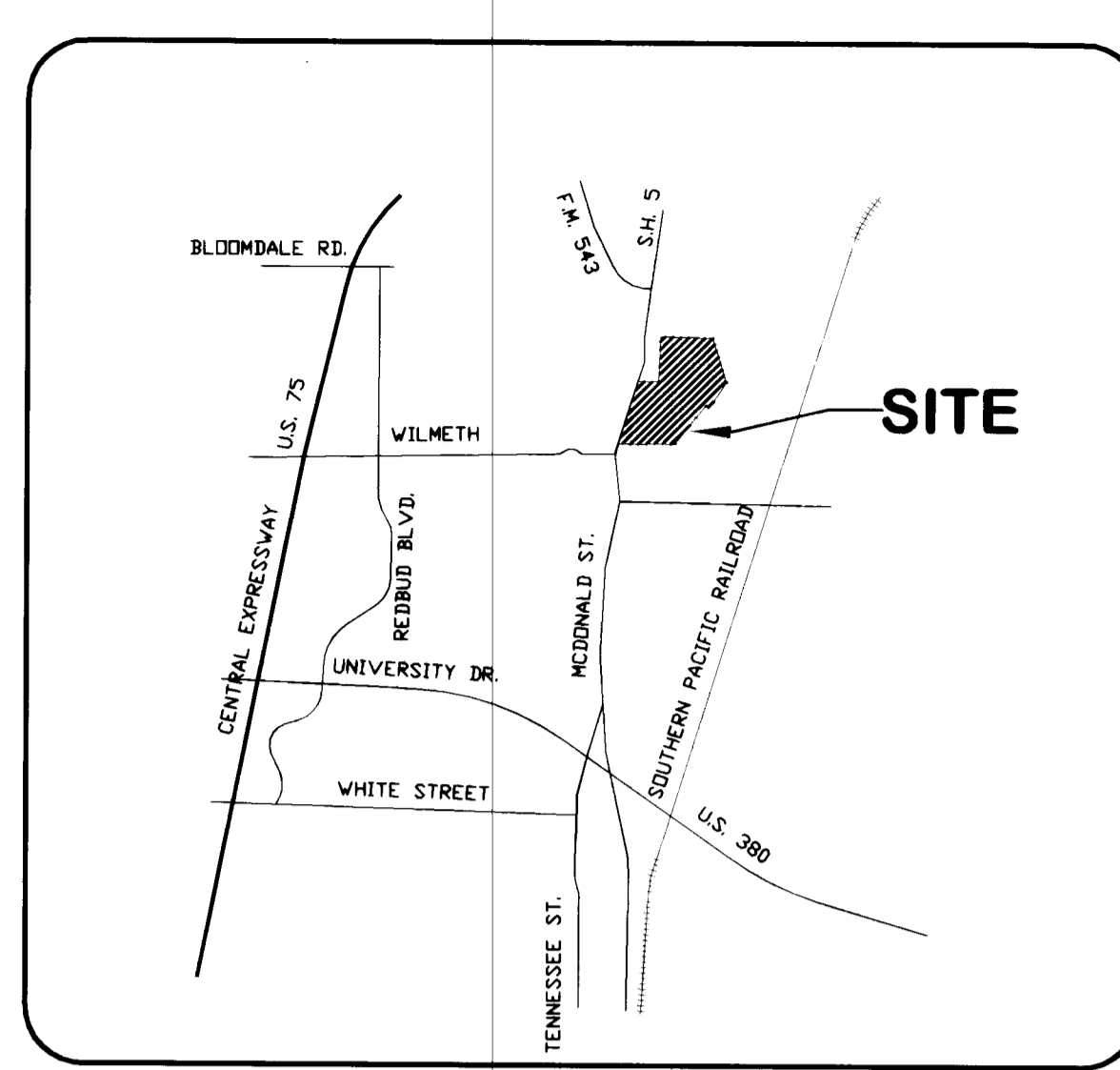


LINE TABLE

LINE	BEARING	LENGTH
L1	S28°45'48"E	21.62'
L2	N62°18'00"E	21.21'
L3	S72°42'00"E	63.78'
L4	N44°57'07"E	21.21'
L5	S45°02'53"E	21.21'
L6	S45°02'53"E	21.21'
L7	N44°57'07"E	21.21'
L8	N45°05'43"E	21.27'
L9	S44°54'04"E	21.16'
L10	N46°51'54"E	21.21'
L11	S43°08'06"E	21.21'
L12	N46°51'40"E	21.21'
L13	S57°57'32"E	21.06'
L14	N32°02'28"E	21.36'
L15	S57°57'32"E	21.06'
L16	S32°02'28"W	21.36'
L17	S57°57'32"E	21.06'
L18	S32°02'28"W	21.36'
L19	S83°35'47"E	24.68'
L20	N88°08'06"W	14.85'
L21	N88°08'06"W	14.85'
L22	N88°08'06"W	14.85'
L23	N88°08'06"W	14.85'
L24	N88°08'06"W	14.85'
L25	S32°02'28"W	28.48'
L26	S43°08'06"E	28.28'
L27	S00°02'53"E	21.99'
L28	S89°57'07"W	24.00'
L29	N00°02'53"W	24.42'
L30	S27°42'00"E	21.21'
L31	N62°18'00"E	21.21'

CURVE TABLE

CURVE	LENGTH	RADIUS	DELTA	TANGENT	CHD. BEARING	CHORD
C1	83.26'	275.00'	17°20'53"	41.95'	S81°22'27"E	82.95'
C2	75.70'	250.00'	17°20'53"	38.14'	S81°22'26"E	75.41'
C3	68.13'	225.00'	17°20'53"	34.33'	S81°22'26"E	67.87'
C4	75.70'	250.00'	17°20'53"	38.14'	S81°22'27"E	75.41'
C5	243.92'	1050.00'	1°31'37"	122.51'	N83°17'49"E	243.37'
C6	238.11'	1025.00'	1°31'37"	119.60'	N83°17'49"E	237.58'
C7	232.31'	1000.00'	1°31'37"	116.68'	N83°17'49"E	231.79'
C8	185.85'	800.00'	1°31'37"	93.34'	N83°17'49"E	185.43'
C9	180.04'	775.00'	1°31'37"	90.43'	N83°17'49"E	179.63'
C10	174.23'	750.00'	1°31'37"	87.51'	N83°17'49"E	173.84'
C11	49.27'	2000.00'	1°24'42"	24.64'	S01°09'33"W	49.27'
C12	65.94'	1975.00'	1°24'42"	32.97'	S00°54'30"W	65.94'
C13	47.60'	1950.00'	1°23'55"	23.80'	S01°09'56"W	47.60'
C14	223.04'	840.00'	1°51'24"	112.18'	N84°14'54"E	222.38'
C15	216.54'	815.00'	1°51'24"	108.91'	N84°15'12"E	215.91'
C16	209.75'	790.00'	1°51'24"	105.50'	N84°14'53"E	209.14'
C17	144.61'	550.00'	1°50'54"	72.73'	N84°10'27"E	144.20'
C18	139.49'	525.00'	1°51'32"	70.16'	N84°15'12"E	139.08'
C19	129.56'	500.00'	1°50'46"	65.14'	N84°03'53"E	129.19'
C20	101.45'	390.00'	1°54'17"	51.01'	N84°05'39"E	101.17'
C21	123.62'	50.00'	1°41'39'19"	143.80'	S46°51'03"W	94.45'
C22	124.34'	50.00'	1°42'28'58"	147.22'	N57°57'32"W	94.69'
C23	122.95'	50.00'	1°40'53'06"	140.75'	N32°02'28"E	94.23'
C24	77.05'	290.00'	1°51'32"	38.75'	N84°15'12"E	76.83'
C25	82.37'	310.00'	1°51'32"	41.43'	N84°15'12"E	82.12'
C26	226.02'	310.00'	41°46'28"	118.30'	N82°28'16"W	221.05'
C27	211.44'	290.00'	41°46'28"	110.67'	N82°28'16"W	206.79'
C28	79.34'	390.00'	1°09'56"	39.67'	N16°15'35"E	79.34'



S8347

TRINITY HEIGHTS PHASE ONE

40.510 ACRES OUT OF
TOLA DUNN SURVEY, ABSTRACT NO. 284
JOHN DUNCAN SURVEY, ABSTRACT NO. 259
CITY OF MCKINNEY
COLLIN COUNTY, TEXAS

MDC-TRINITY HEIGHTS L.P. OWNER
1420 W. Mockingbird Lane, Suite 500
Dallas, Texas 75247 (214) 630-0481

JONES & BOYD, INC. SURVEYOR/ENGINEER
16800 Dallas Parkway, Suite 240
Dallas, Texas 75248 (972)248-7676

- NOTES
- * DRIVEWAYS LOCATED ON THE FOLLOWING LOTS SHALL BE LOCATED A MINIMUM OF 100 FEET EAST OF THE CURB RETURN AT STATE HIGHWAY NO. 5: BLOCK A, LOTS 1; BLOCK B, LOTS 1 & 19; BLOCK F, LOT 1
 - ALL LOTS COMPLY WITH THE MINIMUM STANDARDS AS ESTABLISHED BY THE ZONING DISTRICT.
 - ALL COMMON AREAS TO BE MAINTAINED BY THE H.O.A., UNLESS OTHERWISE STATED.