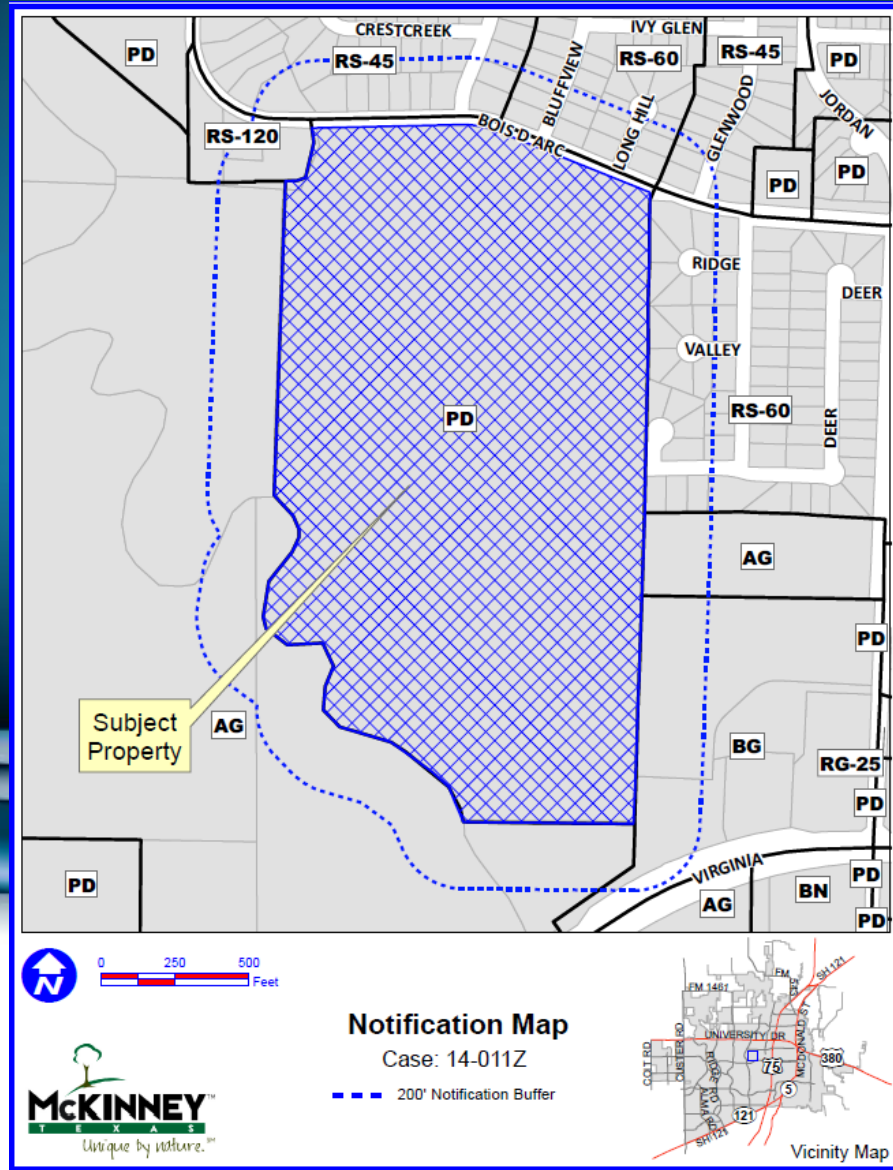


Case No. 14-011Z

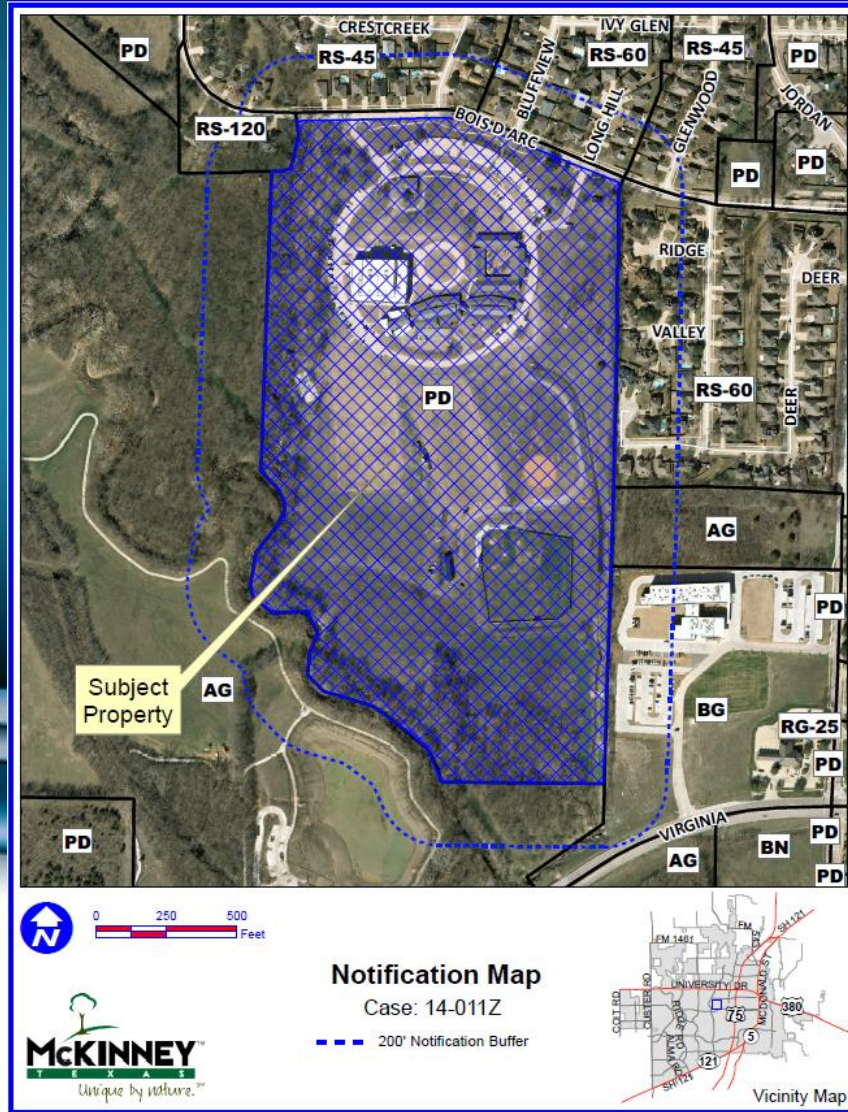
McKinney Christian Academy



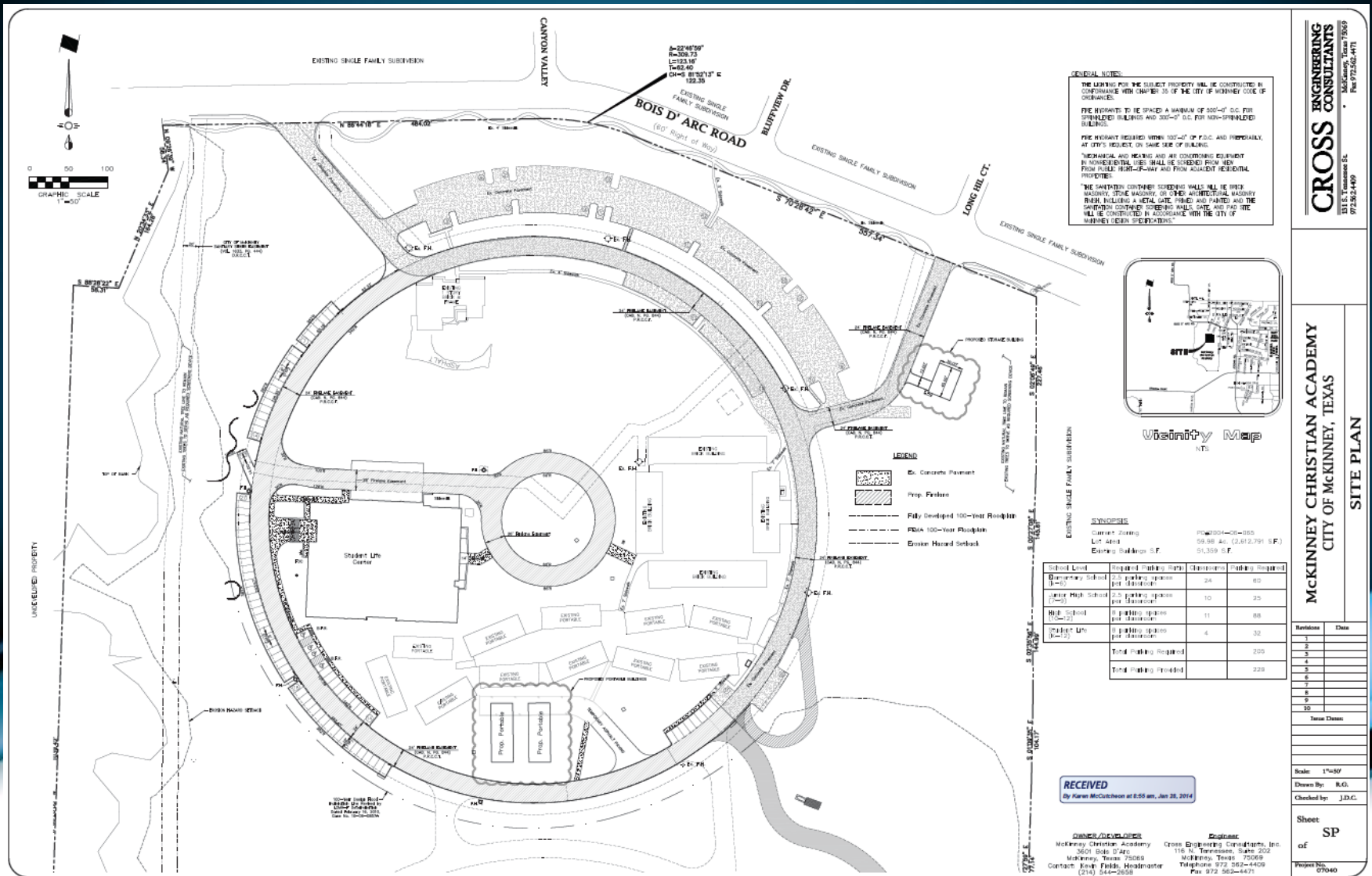
Location Map



Aerial Exhibit



Proposed Zoning Exhibit



GENERAL NOTES:

THE WORKING FOR THE SUBJECT PROPERTY SHALL BE CONDUCTED IN CONFORMANCE WITH CHAPTER 55 OF THE CITY OF MCKINNEY CODE OF ORDINANCES.

THE SPACINGS TO BE SPACED A MINIMUM OF 300'-0" O.C. FOR SPRINKLERED BUILDINGS AND 300'-0" O.C. FOR NON-SPRINKLERED BUILDINGS.

THE MANSARD RELATED WITH 100'-0" OF P.D.C. AND PREVIOUSLY, AT CITY'S REQUEST, ON SAME DATE OF BUILDING.

METALLIC AND HEATING AND AIR CONDITIONING EQUIPMENT IN NON-RESIDENTIAL USE SHALL BE COVERED FROM VIEW FROM PUBLIC HIGHWAY AND FROM ADJACENT RESIDENTIAL PROPERTIES.

THE SHEDDING CONTAINING SCREENING WALLS SHALL BE WITH MASONRY, STONE MASONRY, OR OTHER ARCHITECTURAL MASONRY WITH BUILDING A METAL LATE FINISH AND PAINTED AND THE SHEDDING CONTAINING SCREENING WALLS, GATE, AND PAD SITE WILL BE CONDUCTED IN ACCORDANCE WITH THE CITY OF MCKINNEY LOCAL ORDINANCES.



Locality Map
N.T.S.

- LEGEND**
- Concrete Pavement
 - Brick Pavers
 - Fully Developed 100-Year Floodplain
 - FEMA 100-Year Floodplain
 - Erosion Hazard Setback

SYNOPSIS

Current Zoning: PD2004-06-055
 Lot Area: 59.98 AC (2,612,791 S.F.)
 Existing Building S.F.: 51,359 S.F.

School Level	Required Parking Spots	Classrooms	Parking Required
Elementary School (K-5)	2.5 parking spaces per classroom	24	60
Junior High School (6-8)	2.5 parking spaces per classroom	10	25
High School (9-12)	3 parking spaces per classroom	11	33
College Life (13-17)	3 parking spaces per classroom	4	12
Total Parking Required			205
Total Parking Provided			226

RECEIVED
 By Karen McClatchey at 2:59 am, Jan 28, 2014

OWNER/PROJECT LEADER
 McKinney Christian Academy
 3601 Sola Drive
 McKinney, Texas 75069
 Contact: King Fields, Headmaster
 (214) 544-5658

PREPARED BY
 Cross Engineering Consultants, Inc.
 116 N. Texasview, Suite 202
 McKinney, Texas 75069
 Telephone: 972-362-4409
 Fax: 972-362-4471

CROSS ENGINEERING CONSULTANTS
 3315 E. Commerce St.
 McKinney, Texas 75069
 972-362-4409
 Fax: 972-362-4471

MCKINNEY CHRISTIAN ACADEMY
 CITY OF MCKINNEY, TEXAS

SITE PLAN

Revisions	Date
1	
2	
3	
4	
5	
6	
7	
8	
9	
10	

Issue Dates:

Scale: 1"=50'

Drawn By: R.G.

Checked by: J.D.C.

Sheet: **SP**

of

Project No: 07040

Proposed Zoning Exhibit

