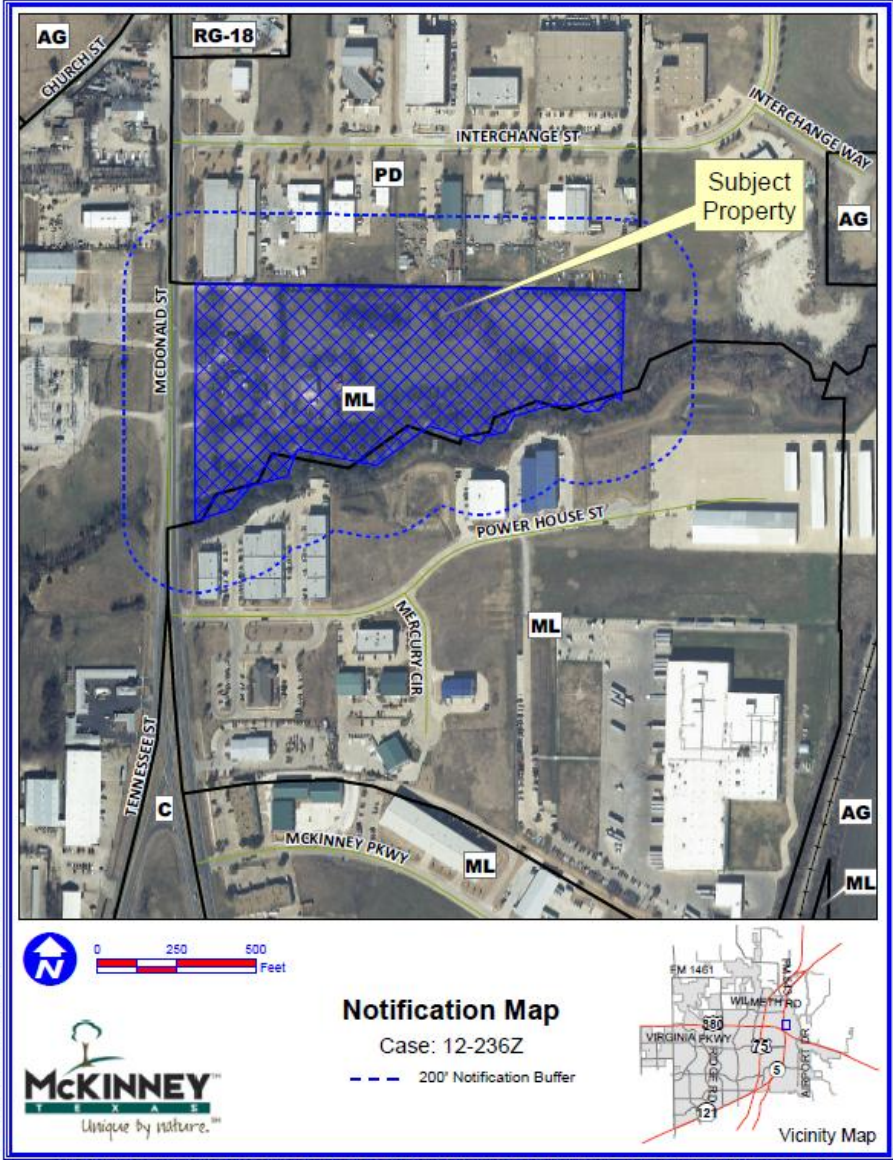


# Case No. 12-236Z

Conduct a Public Hearing to Consider/Discuss/Act on the Request by Pogue Engineering & Development Company, Inc., on Behalf of Early B. & Lena Milstead, for Approval of a Request to Rezone Less than 16 Acres from “ML” – Light Manufacturing District to “PD” – Planned Development District, Generally to Modify the Development Standards and Allow for a Homeless Shelter and Related Uses, Located Approximately 350 Feet North of Power House Drive and on the East Side of State Highway 5 (McDonald Street)



# Aerial Exhibit

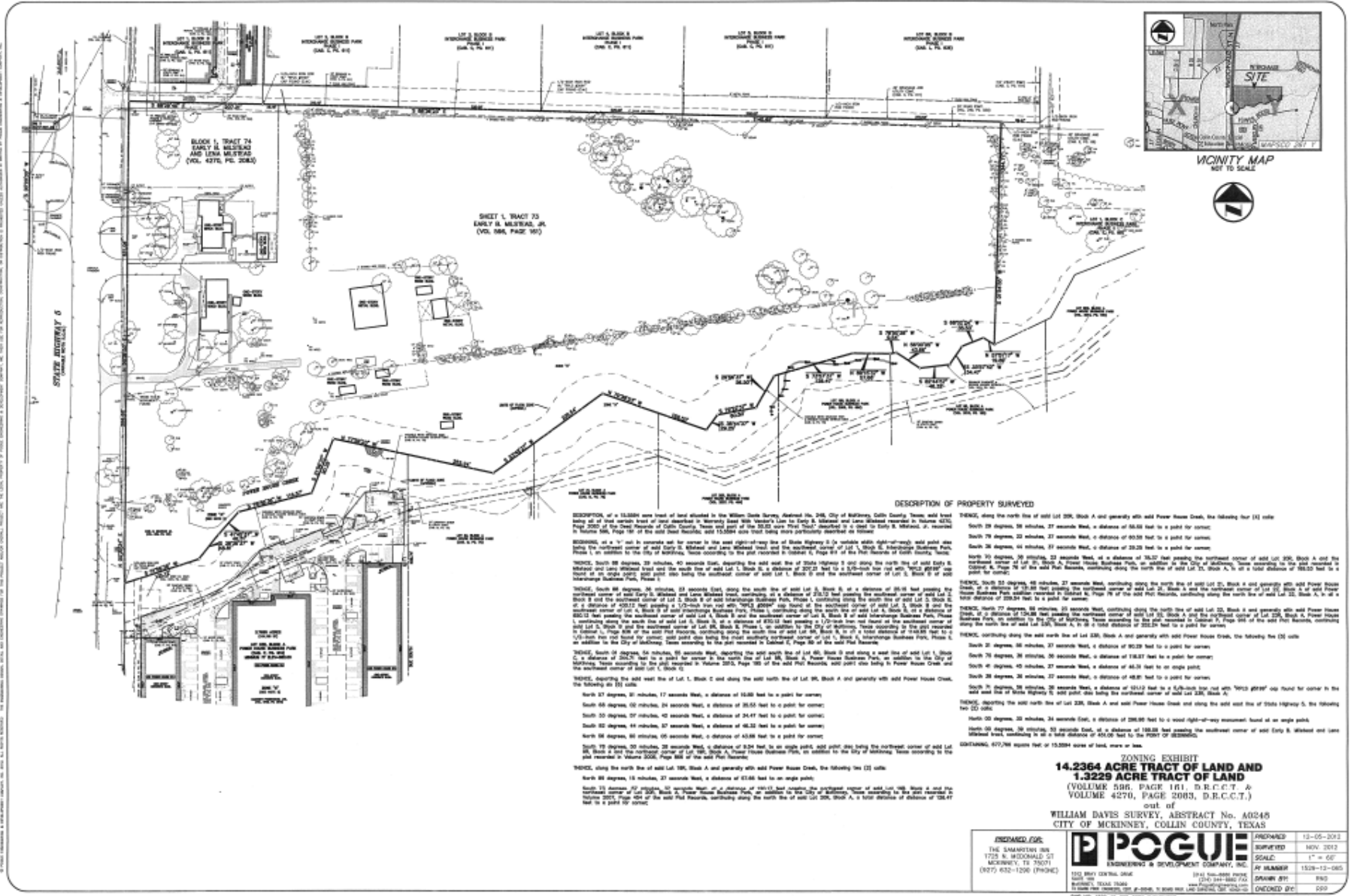


Path: S:\MCOGIS\Net\karran\Projects\2012\12-236Z.mxd

DISCLAIMER: This map and information contained in it were developed exclusively for use by the City of McKinney. Any use or reliance on this map by anyone else is at that party's risk and without liability to the City of McKinney, its officials or employees for any discrepancies, errors, or variances which may exist.



# Proposed Zoning Exhibit



**DESCRIPTION OF PROPERTY SURVEYED**

THENCE, along the north line of add Lot 236, Block A and generally with add Power House Creek, the following (1) mile

South 29 degrees, 28 minutes, 27 seconds West, a distance of 58.53 feet to a point for corner;

South 79 degrees, 25 minutes, 21 seconds West, a distance of 50.53 feet to a point for corner;

South 26 degrees, 46 minutes, 27 seconds West, a distance of 50.53 feet to a point for corner;

South 23 degrees, 28 minutes, 27 seconds West, a distance of 58.53 feet to a point for corner;

THENCE, along the north line of add Lot 236, Block A and generally with add Power House Creek, the following (2) mile

South 29 degrees, 28 minutes, 27 seconds West, a distance of 58.53 feet to a point for corner;

South 79 degrees, 25 minutes, 21 seconds West, a distance of 50.53 feet to a point for corner;

South 26 degrees, 46 minutes, 27 seconds West, a distance of 50.53 feet to a point for corner;

South 23 degrees, 28 minutes, 27 seconds West, a distance of 58.53 feet to a point for corner;

THENCE, along the north line of add Lot 236, Block A and generally with add Power House Creek, the following (3) mile

South 29 degrees, 28 minutes, 27 seconds West, a distance of 58.53 feet to a point for corner;

South 79 degrees, 25 minutes, 21 seconds West, a distance of 50.53 feet to a point for corner;

South 26 degrees, 46 minutes, 27 seconds West, a distance of 50.53 feet to a point for corner;

South 23 degrees, 28 minutes, 27 seconds West, a distance of 58.53 feet to a point for corner;

THENCE, along the north line of add Lot 236, Block A and generally with add Power House Creek, the following (4) mile

South 29 degrees, 28 minutes, 27 seconds West, a distance of 58.53 feet to a point for corner;

South 79 degrees, 25 minutes, 21 seconds West, a distance of 50.53 feet to a point for corner;

South 26 degrees, 46 minutes, 27 seconds West, a distance of 50.53 feet to a point for corner;

South 23 degrees, 28 minutes, 27 seconds West, a distance of 58.53 feet to a point for corner;

THENCE, along the north line of add Lot 236, Block A and generally with add Power House Creek, the following (5) mile

South 29 degrees, 28 minutes, 27 seconds West, a distance of 58.53 feet to a point for corner;

South 79 degrees, 25 minutes, 21 seconds West, a distance of 50.53 feet to a point for corner;

South 26 degrees, 46 minutes, 27 seconds West, a distance of 50.53 feet to a point for corner;

South 23 degrees, 28 minutes, 27 seconds West, a distance of 58.53 feet to a point for corner;

THENCE, along the north line of add Lot 236, Block A and generally with add Power House Creek, the following (6) mile

South 29 degrees, 28 minutes, 27 seconds West, a distance of 58.53 feet to a point for corner;

South 79 degrees, 25 minutes, 21 seconds West, a distance of 50.53 feet to a point for corner;

South 26 degrees, 46 minutes, 27 seconds West, a distance of 50.53 feet to a point for corner;

South 23 degrees, 28 minutes, 27 seconds West, a distance of 58.53 feet to a point for corner;

THENCE, along the north line of add Lot 236, Block A and generally with add Power House Creek, the following (7) mile

South 29 degrees, 28 minutes, 27 seconds West, a distance of 58.53 feet to a point for corner;

South 79 degrees, 25 minutes, 21 seconds West, a distance of 50.53 feet to a point for corner;

South 26 degrees, 46 minutes, 27 seconds West, a distance of 50.53 feet to a point for corner;

South 23 degrees, 28 minutes, 27 seconds West, a distance of 58.53 feet to a point for corner;

THENCE, along the north line of add Lot 236, Block A and generally with add Power House Creek, the following (8) mile

South 29 degrees, 28 minutes, 27 seconds West, a distance of 58.53 feet to a point for corner;

South 79 degrees, 25 minutes, 21 seconds West, a distance of 50.53 feet to a point for corner;

South 26 degrees, 46 minutes, 27 seconds West, a distance of 50.53 feet to a point for corner;

South 23 degrees, 28 minutes, 27 seconds West, a distance of 58.53 feet to a point for corner;

THENCE, along the north line of add Lot 236, Block A and generally with add Power House Creek, the following (9) mile

South 29 degrees, 28 minutes, 27 seconds West, a distance of 58.53 feet to a point for corner;

South 79 degrees, 25 minutes, 21 seconds West, a distance of 50.53 feet to a point for corner;

South 26 degrees, 46 minutes, 27 seconds West, a distance of 50.53 feet to a point for corner;

South 23 degrees, 28 minutes, 27 seconds West, a distance of 58.53 feet to a point for corner;

THENCE, along the north line of add Lot 236, Block A and generally with add Power House Creek, the following (10) mile

South 29 degrees, 28 minutes, 27 seconds West, a distance of 58.53 feet to a point for corner;

South 79 degrees, 25 minutes, 21 seconds West, a distance of 50.53 feet to a point for corner;

South 26 degrees, 46 minutes, 27 seconds West, a distance of 50.53 feet to a point for corner;

South 23 degrees, 28 minutes, 27 seconds West, a distance of 58.53 feet to a point for corner;

**ZONING EXHIBIT**  
**14.2364 ACRE TRACT OF LAND AND**  
**1.3229 ACRE TRACT OF LAND**  
 (VOLUME 588, PAGE 101, D.B.C.C.T. &  
 VOLUME 4276, PAGE 2083, D.B.C.C.T.)  
 of and  
 WILLIAM DAVIS SURVEY, ABSTRACT NO. 40245  
 CITY OF MCKINNEY, COLLIN COUNTY, TEXAS

PREPARED FOR: THE SAMANTHA BBS 1728 N. McDONALD ST MCKINNEY, TX 75071 (972) 632-1206 (PHONE)	<b>POGUE</b> ENGINEERING & DEVELOPMENT COMPANY, INC. 150 BERRY CENTRAL DRIVE BAYNEVILLE, TEXAS 75004 PHONE: (972) 499-1000 FAX: (972) 499-1001	PREPARED: 12-05-2012 SURVEYED: NOV. 2012 SCALE: 1" = 60' BY: BLANCKEN: 12/03-12-04S DRAWN BY: PBD CHECKED BY: PBD
--	--	--

DATE: 12-05-2012 10:58:10 AM



# Staff Recommendation

Staff recommends **approval** as outlined in the Staff Report.