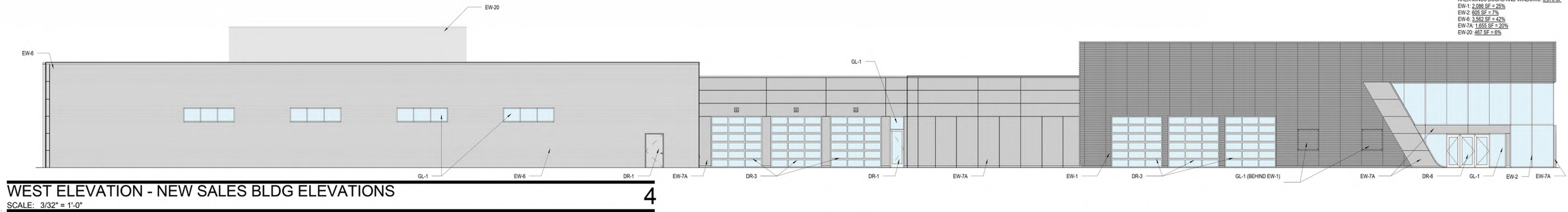


**FACADE CALCULATIONS**  
 TOTAL FACADE AREA: 9,474 SF  
 AREA MINUS DOORS AND WINDOWS: 8,375 SF  
 EW-1: 2,086 SF = 22%  
 EW-2: 505 SF = 5%  
 EW-4: 3,562 SF = 38%  
 EW-7A: 1,659 SF = 18%  
 EW-20: 487 SF = 5%

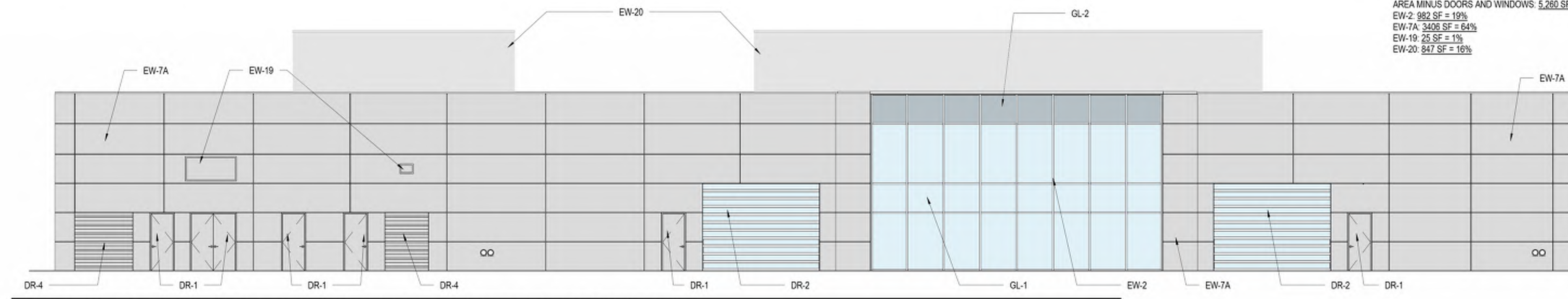


**WEST ELEVATION - NEW SALES BLDG ELEVATIONS**

SCALE: 3/32" = 1'-0"

4

**FACADE CALCULATIONS**  
 TOTAL FACADE AREA: 5,943 SF  
 AREA MINUS DOORS AND WINDOWS: 5,260 SF  
 EW-2: 892 SF = 15%  
 EW-7A: 3,406 SF = 57%  
 EW-19: 25 SF = 0%  
 EW-20: 847 SF = 14%

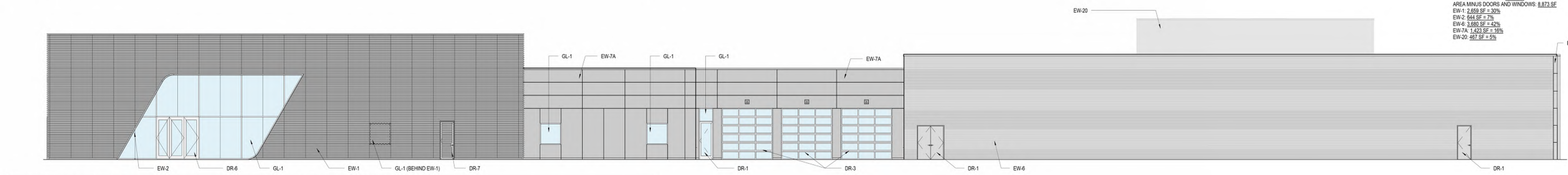


**NORTH ELEVATION - NEW SALES BLDG ELEVATIONS**

SCALE: 3/32" = 1'-0"

3

**FACADE CALCULATIONS**  
 TOTAL FACADE AREA: 9,474 SF  
 AREA MINUS DOORS AND WINDOWS: 8,873 SF  
 EW-1: 2,659 SF = 28%  
 EW-2: 644 SF = 7%  
 EW-6: 3,680 SF = 39%  
 EW-7A: 1,423 SF = 15%  
 EW-20: 467 SF = 5%

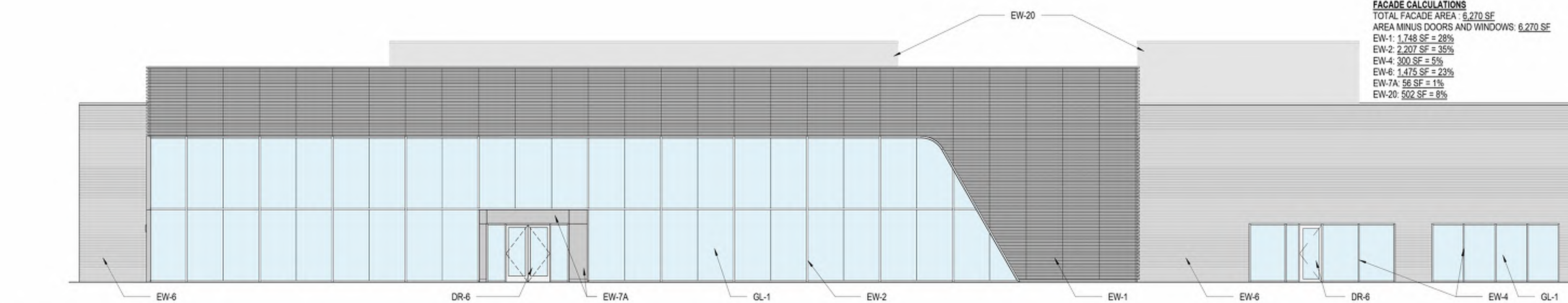


**EAST ELEVATION - NEW SALES BLDG ELEVATIONS**

SCALE: 3/32" = 1'-0"

2

**FACADE CALCULATIONS**  
 TOTAL FACADE AREA: 6,270 SF  
 AREA MINUS DOORS AND WINDOWS: 6,270 SF  
 EW-1: 1,748 SF = 28%  
 EW-2: 2,207 SF = 35%  
 EW-4: 300 SF = 5%  
 EW-6: 1,475 SF = 23%  
 EW-7A: 56 SF = 1%  
 EW-20: 502 SF = 8%



**SOUTH ELEVATION - NEW SALES BLDG ELEVATIONS**

SCALE: 3/32" = 1'-0"

1

GL-1	INSULATED GLASS PANEL (11% VISIBLE LIGHT REFLECTANCE) SOLARBAN 60 ON LOW IRON GLASS	EW-17	SOLAR SCREEN: FABRIC FINISH: GREY
GL-2	INSULATED SPANDREL GLASS PANEL	EW-19	ALUMINUM LOUVER FINISH: GREY
EW-1	PERFORATED CORRUGATED METAL PANEL SYSTEM CLEAR ANODIZED ALUMINUM	EW-20	EQUIPMENT LOUVER SCREEN FINISH: GREY
EW-2	CURTAIN WALL FRAMING CLEAR ANODIZED ALUMINUM	EW-30	STEEL STRUCTURE FINISH: HOT DIPPED GALVANIZED
EW-4	STOREFRONT FRAMING CLEAR ANODIZED ALUMINUM	DR-1	SOLID CORE DOOR GREY FINISH
EW-6	PREFINISHED CORRUGATED METAL PANEL SYSTEM FINISH: SILVERSMITH	DR-2	HIGH SPEED ROLL UP DOOR CLEAR ANODIZED ALUMINUM FRAME WITH CLEAR PLASTIC PANELS
EW-7A	ALUMINUM COMPOSITE PANEL COLOR: SILVERSMITH	DR-3	SECTIONAL OVERHEAD DOOR CLEAR ANODIZED ALUMINUM FRAME WITH CLEAR GLASS PANELS
EW-7B	ALUMINUM COMPOSITE PANEL COLOR: WHITE	DR-4	COILING OVERHEAD DOOR GRAY BAKED ENAMEL FINISH
EW-9	EXTERIOR PAINT COLOR: GRAY SHINGLE	DR-5	COILING OVERHEAD DOOR GALVANIZED STEEL FINISH
EW-14	MASONRY: SPLIT FACE CMU FINISH: GRAY GRANITE	DR-6	STOREFRONT DOOR CLEAR ANODIZED ALUMINUM FINISH WITH CLEAR GLASS
EW-15	MASONRY: SPLIT FACE CMU FINISH: SALT & PEPPER	DR-7	HOLLOW METAL DOOR CLAD W/ CORRUGATED PERFORATED METAL PANEL OVERLAY FINISH: BRUSHED STAINLESS STEEL
EW-16	STANDING SEAM METAL ROOF FINISH: BERRIDGE NATURAL WHITE	DR-8	HOLLOW METAL DOOR FINISH: PAINT WHITE

NOTE: EW 14 & 15 ARE USED AT TRASH ENCLOSURE

**EXTERIOR FINISH LIST**

SCALE: 6" = 1'-0"



02/22/2016

As indicated

Gensler

**AUDI OF MCKINNEY**

A02 - COLOR EXTERIOR ELEVATIONS - FACADE PLAN REVIEW

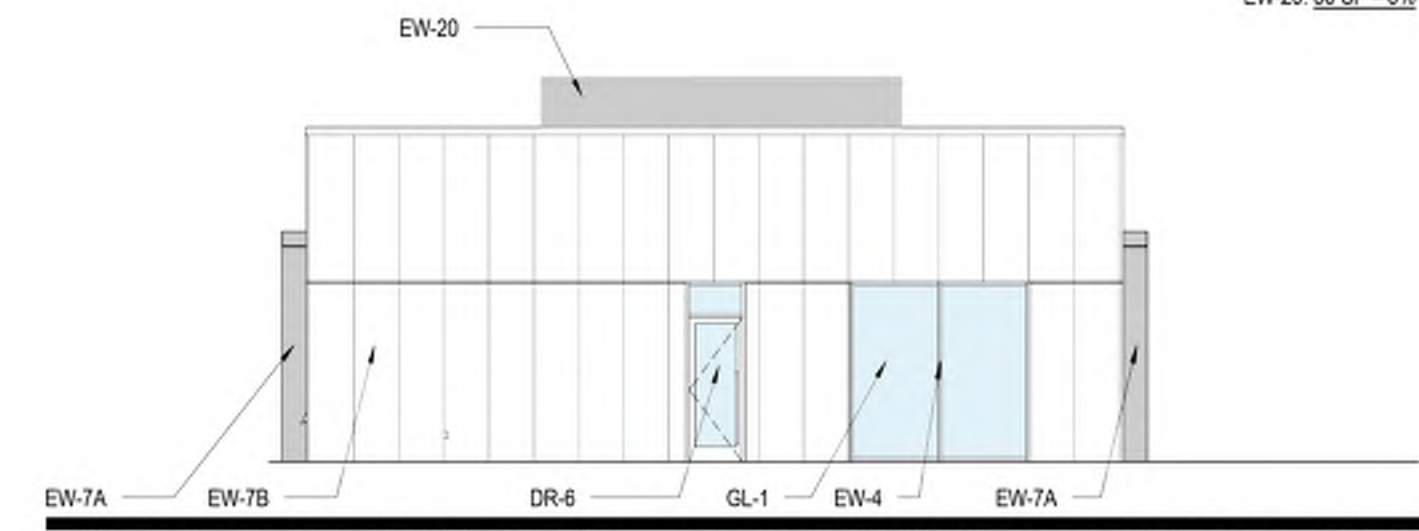
02/22/2016



© 2015 Gensler

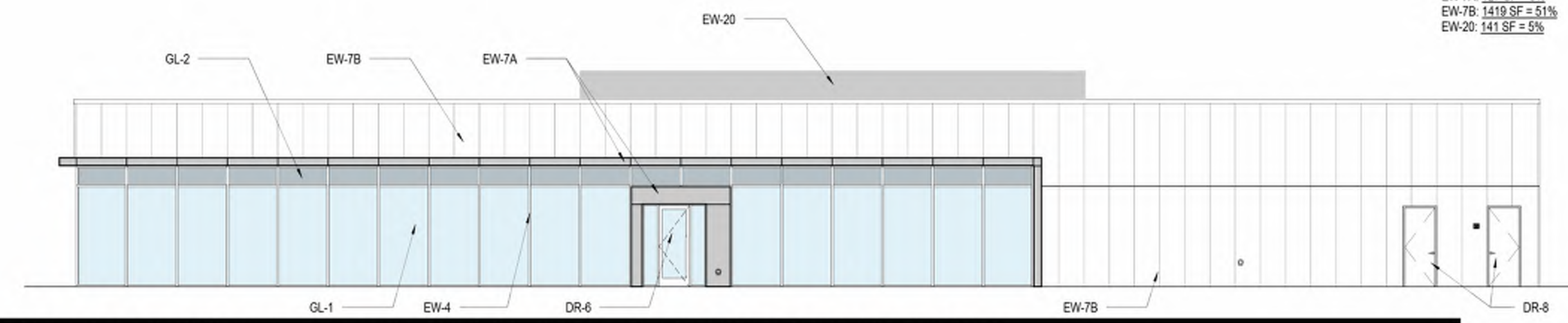


**FACADE CALCULATIONS**  
 TOTAL FACADE AREA: 932 SF  
 AREA MINUS DOORS AND WINDOWS: 898 SF  
 EW-4: 100 SF = 11%  
 EW-7A: 36 SF = 4%  
 EW-7B: 708 SF = 77%  
 EW-20: 56 SF = 6%



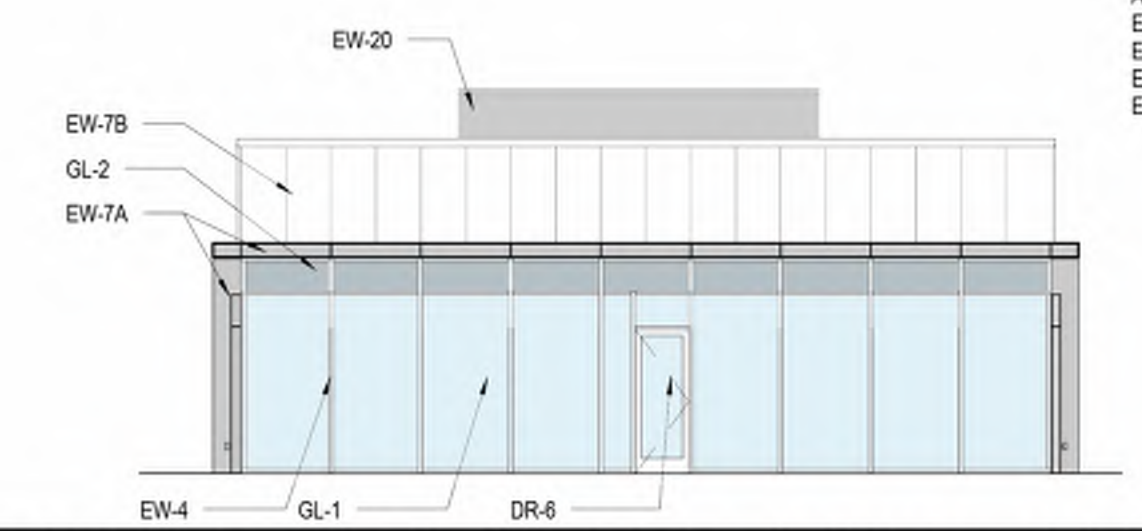
**WEST ELEVATION - PREOWNED SALES BLDG ELEVATIONS** 4  
 SCALE: 3/32" = 1'-0"

**FACADE CALCULATIONS**  
 TOTAL FACADE AREA: 2,839 SF  
 AREA MINUS DOORS AND WINDOWS: 2,785 SF  
 EW-4: 1,094 SF = 39%  
 EW-7A: 127 SF = 5%  
 EW-7B: 1,419 SF = 51%  
 EW-20: 141 SF = 5%



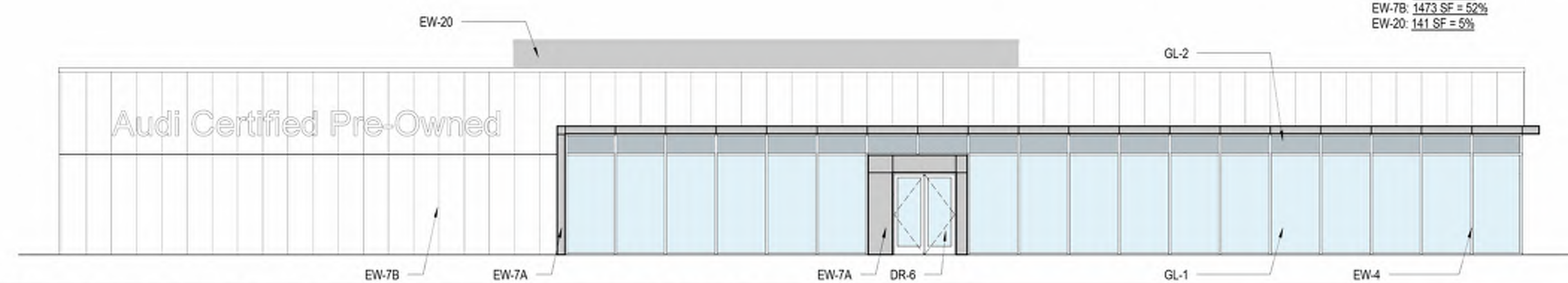
**NORTH ELEVATION - PREOWNED SALES BLDG ELEVATIONS** 3  
 SCALE: 3/32" = 1'-0"

**FACADE CALCULATIONS**  
 TOTAL FACADE AREA: 932 SF  
 AREA MINUS DOORS AND WINDOWS: 932 SF  
 EW-4: 540 SF = 58%  
 EW-7A: 75 SF = 8%  
 EW-7B: 261 SF = 28%  
 EW-20: 56 SF = 6%



**EAST ELEVATION - PREOWNED SALES BLDG ELEVATIONS** 2  
 SCALE: 3/32" = 1'-0"

**FACADE CALCULATIONS**  
 TOTAL FACADE AREA: 2,839 SF  
 AREA MINUS DOORS AND WINDOWS: 2,839 SF  
 EW-4: 1,094 SF = 39%  
 EW-7A: 127 SF = 5%  
 EW-7B: 1,473 SF = 52%  
 EW-20: 141 SF = 5%



**SOUTH ELEVATION - PREOWNED SALES BLDG ELEVATIONS** 1  
 SCALE: 3/32" = 1'-0"

GL-1	INSULATED GLASS PANEL (11% VISIBLE LIGHT REFLECTANCE) SOLARBAN 60 ON LOW IRON GLASS	EW-17	SOLAR SCREEN: FABRIC FINISH: GREY
GL-2	INSULATED SPANDREL GLASS PANEL	EW-19	ALUMINUM LOUVER FINISH: GREY
EW-1	PERFORATED CORRUGATED METAL PANEL SYSTEM CLEAR ANODIZED ALUMINUM	EW-20	EQUIPMENT LOUVER SCREEN FINISH: GREY
EW-2	CURTAIN WALL FRAMING CLEAR ANODIZED ALUMINUM	EW-30	STEEL STRUCTURE FINISH: HOT DIPPED GALVANIZED
EW-4	STOREFRONT FRAMING CLEAR ANODIZED ALUMINUM	DR-1	SOLID CORE DOOR GREY FINISH
EW-6	PREFINISHED CORRUGATED METAL PANEL SYSTEM FINISH: SILVERSMITH	DR-2	HIGH SPEED ROLL UP DOOR CLEAR ANODIZED ALUMINUM FRAME WITH CLEAR PLASTIC PANELS
EW-7A	ALUMINUM COMPOSITE PANEL COLOR: SILVERSMITH	DR-3	SECTIONAL OVERHEAD DOOR CLEAR ANODIZED ALUMINUM FRAME WITH CLEAR GLASS PANELS
EW-7B	ALUMINUM COMPOSITE PANEL COLOR: WHITE	DR-4	COILING OVERHEAD DOOR GRAY BAKED ENAMEL FINISH
EW-9	EXTERIOR PAINT COLOR: GRAY SHINGLE	DR-5	COILING OVERHEAD DOOR GALVANIZED STEEL FINISH
EW-14	MASONRY: SPLIT FACE CMU FINISH: GRAY GRANITE	DR-6	STOREFRONT DOOR CLEAR ANODIZED ALUMINUM FINISH WITH CLEAR GLASS
EW-15	MASONRY: SPLIT FACE CMU FINISH: SALT & PEPPER	DR-7	HOLLOW METAL DOOR CLAD W/ CORRUGATED PERFORATED METAL PANEL OVERLAY FINISH: BRUSHED STAINLESS STEEL
EW-16	STANDING SEAM METAL ROOF FINISH: BERRIDGE NATURAL WHITE	DR-8	HOLLOW METAL DOOR FINISH: PAINT WHITE

NOTE: EW 14 & 15 ARE USED AT TRASH ENCLOSURE

**EXTERIOR FINISH LIST**  
 SCALE: 6" = 1'-0"



As indicated

**AUDI OF MCKINNEY**

02/22/2016

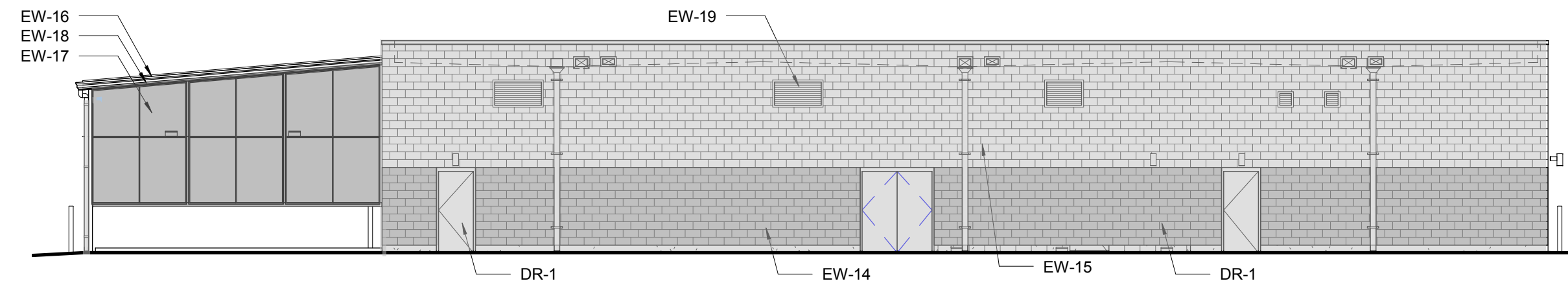
Gensler

**A03 - COLOR EXTERIOR ELEVATIONS - FACADE PLAN REVIEW**

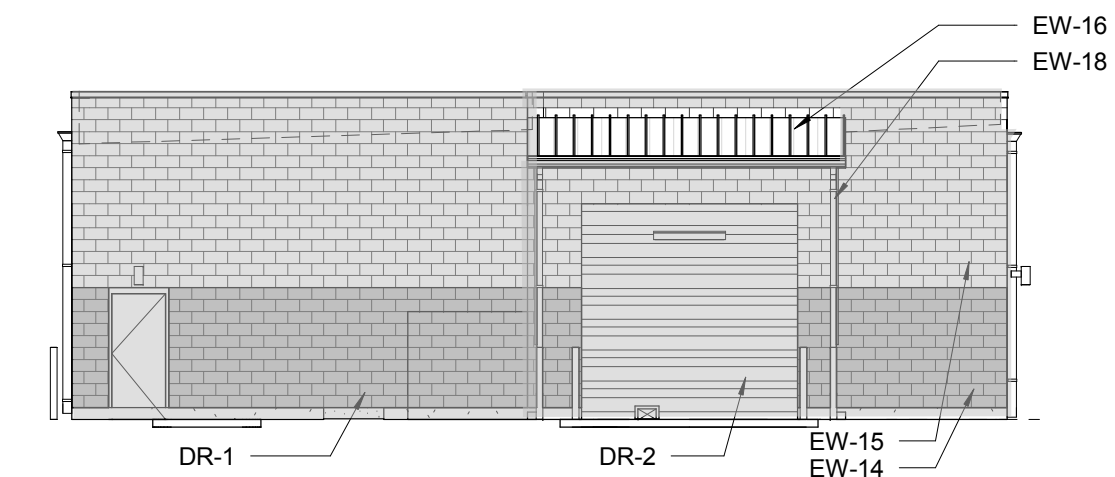
**RECEIVED**  
 By Planning Department at 8:05 am, Feb 22, 2016

© 2015 Gensler





**FACADE CALCULATIONS**  
 TOTAL FACADE AREA: 2124 SF  
 AREA MINUS DOORS AND WINDOWS: 2029 SF  
 EW-14: 639 SF = 31%  
 EW-15: 1058 SF = 52%  
 EW-16: 20 SF = 1%  
 EW-17: 265 SF = 13%  
 EW-18: 15 SF = 1%  
 EW-19: 32 SF = 2%



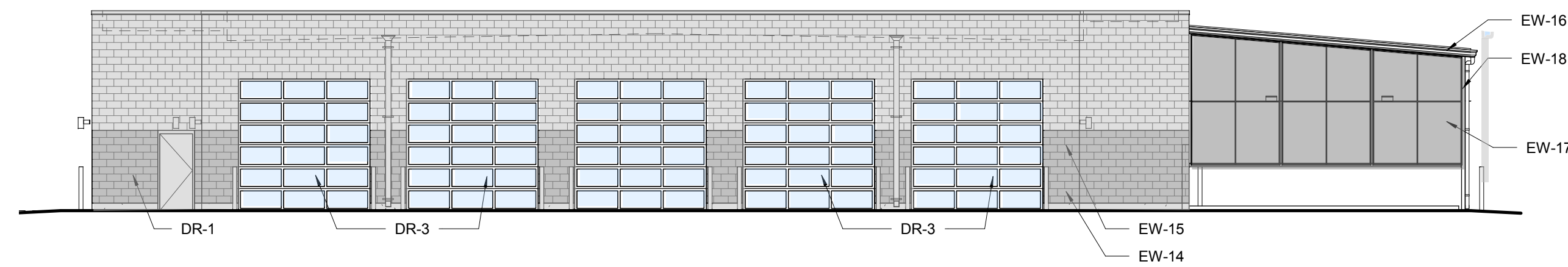
**FACADE CALCULATIONS**  
 TOTAL FACADE AREA: 948 SF  
 AREA MINUS DOORS AND WINDOWS: 782 SF  
 EW-14: 238 SF = 30%  
 EW-15: 485 SF = 62%  
 EW-16: 49 SF = 7%  
 EW-18: 10 SF = 1%

**NORTH ELEVATION - CARWASH BLDG ELEVATIONS**

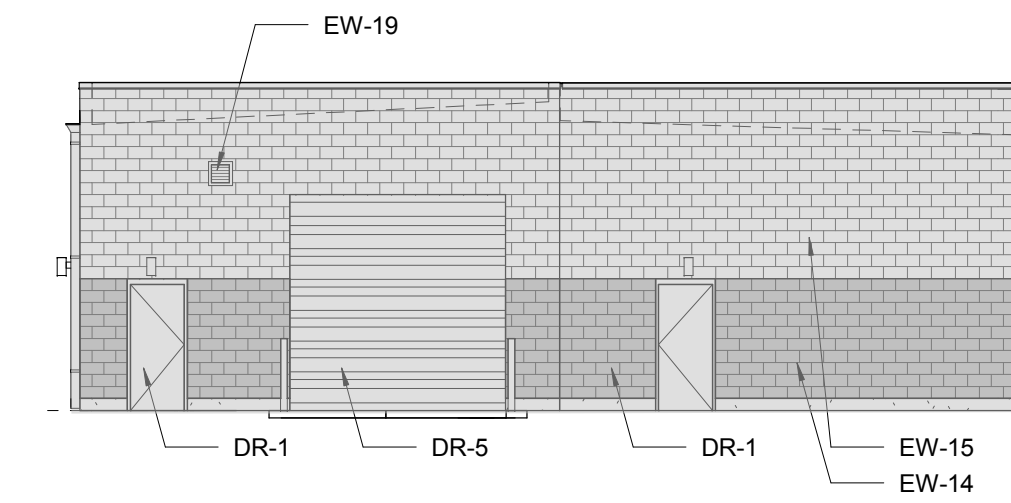
SCALE: 3/32" = 1'-0"

**8 EAST ELEVATION - CARWASH BLDG ELEVATIONS 7**

SCALE: 3/32" = 1'-0"



**FACADE CALCULATIONS**  
 TOTAL FACADE AREA: 2124 SF  
 AREA MINUS DOORS AND WINDOWS: 1379 SF  
 EW-14: 269 SF = 20%  
 EW-15: 808 SF = 59%  
 EW-16: 21 SF = 2%  
 EW-17: 265 SF = 18%  
 EW-18: 16 SF = 1%



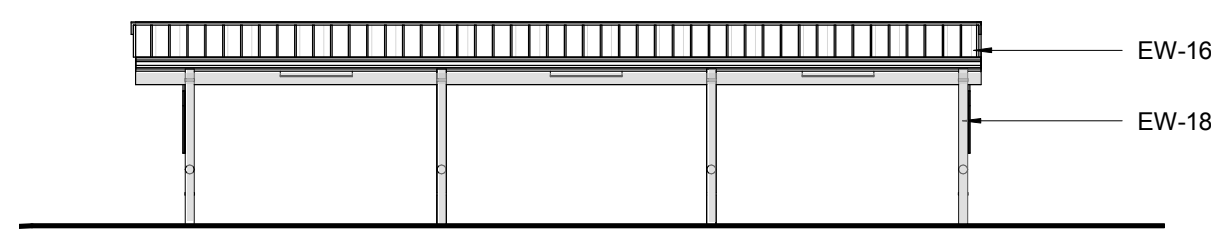
**FACADE CALCULATIONS**  
 TOTAL FACADE AREA: 948 SF  
 AREA MINUS DOORS AND WINDOWS: 754 SF  
 EW-14: 222 SF = 29%  
 EW-15: 530 SF = 70%  
 EW-19: 2 SF = 1%

**SOUTH ELEVATION - CARWASH BLDG ELEVATIONS**

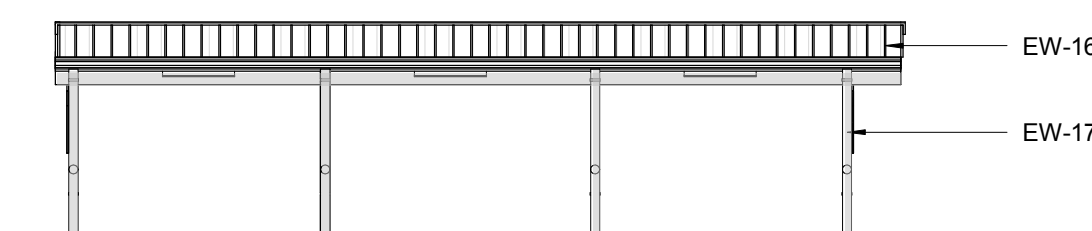
SCALE: 3/32" = 1'-0"

**5 WEST ELEVATION - CARWASH BLDG ELEVATIONS 6**

SCALE: 3/32" = 1'-0"



**FACADE CALCULATIONS**  
 TOTAL FACADE AREA: 182 SF  
 AREA MINUS DOORS AND WINDOWS: 182 SF  
 EW-16: 124 SF = 68%  
 EW-18: 58 SF = 32%



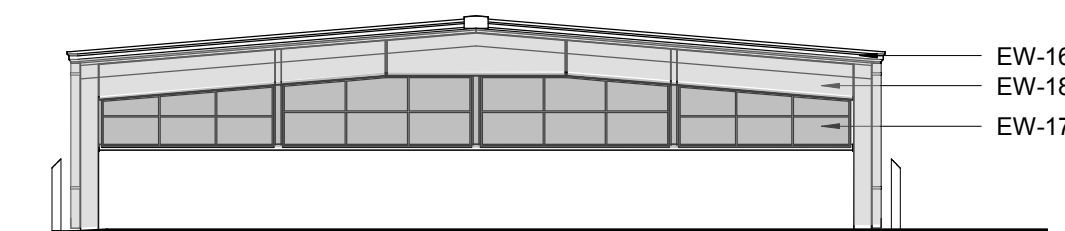
**FACADE CALCULATIONS**  
 TOTAL FACADE AREA: 182 SF  
 AREA MINUS DOORS AND WINDOWS: 182 SF  
 EW-16: 124 SF = 68%  
 EW-18: 58 SF = 32%

**EAST ELEVATION - VACUUM CANOPY 1**

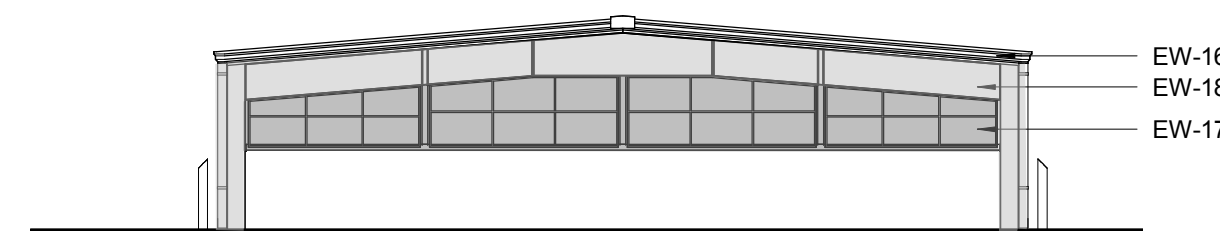
SCALE: 3/32" = 1'-0"

**3 WEST ELEVATION - VACUUM CANOPY 4**

SCALE: 3/32" = 1'-0"



**FACADE CALCULATIONS**  
 TOTAL FACADE AREA: 293 SF  
 AREA MINUS DOORS AND WINDOWS: 293 SF  
 EW-16: 38 SF = 13%  
 EW-17: 138 SF = 47%  
 EW-18: 117 SF = 40%



**FACADE CALCULATIONS**  
 TOTAL FACADE AREA: 293 SF  
 AREA MINUS DOORS AND WINDOWS: 293 SF  
 EW-16: 38 SF = 13%  
 EW-17: 138 SF = 47%  
 EW-18: 117 SF = 40%

**SOUTH ELEVATION - VACUUM CANOPY 1**

SCALE: 3/32" = 1'-0"

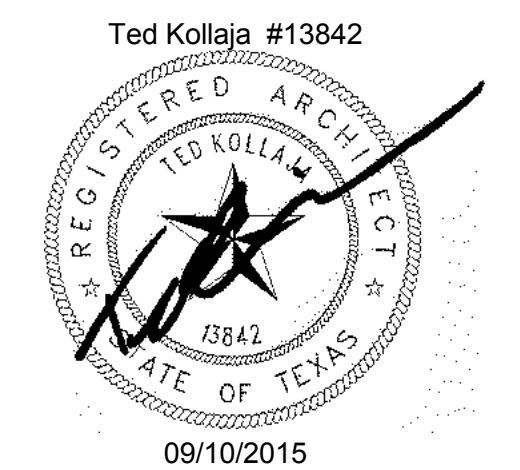
**2 NORTH ELEVATION - VACUUM CANOPY 2**

SCALE: 3/32" = 1'-0"

- GL-1 INSULATED GLASS PANEL (11% VISIBLE LIGHT REFLECTANCE)  
SOLARBAN 60 ON LOW IRON GLASS
- GL-2 INSULATED SPANDREL GLASS PANEL
- CW-2 CURTAIN WALL FRAMING  
CLEAR ANODIZED ALUMINUM
- EW-1 PERFORATED CORRUGATED METAL PANEL SYSTEM  
CLEAR ANODIZED ALUMINUM
- EW-6 PREFINISHED CORRUGATED METAL PANEL SYSTEM  
FINISH: SILVERSMITH
- EW-7A ALUMINUM COMPOSITE PANEL  
COLOR: SILVERSMITH
- EW-7B ALUMINUM COMPOSITE PANEL  
COLOR: WHITE
- EW-9 EXTERIOR PAINT  
COLOR: GRAY SHINGLE
- EW-14 MASONRY: SPLIT FACE CMU  
FINISH: GRAY GRANITE
- EW-15 MASONRY: SPLIT FACE CMU  
FINISH: SALT & PEPPER
- EW-16 STANDING SEAM METAL ROOF  
FINISH: BERRIDGE NATURAL WHITE
- EW-17 SOLAR SCREEN: FABRIC  
FINISH: GREY
- EW-18 STEEL STRUCTURE  
FINISH: HOT DIPPED GALVANIZED
- EW-19 ALUMINUM LOUVER  
FINISH: GREY
- DR-1 HOLLOW METAL DOOR  
BRUSHED STAINLESS STEEL CLAD
- DR-2 HIGH SPEED ROLL UP DOOR  
CLEAR ANODIZED ALUMINUM FRAME WITH CLEAR PLASTIC PANELS
- DR-3 SECTIONAL OVERHEAD DOOR  
CLEAR ANODIZED ALUMINUM FRAME WITH CLEAR GLASS PANELS
- DR-4 COILING OVERHEAD DOOR  
GRAY BAKED ENAMEL FINISH
- DR-5 COILING OVERHEAD DOOR  
GALVANIZED STEEL FINISH
- DR-6 STOREFRONT DOOR  
CLEAR ANODIZED ALUMINUM FINISH WITH CLEAR GLASS
- DR-7 HOLLOW METAL DOOR CLAD W/ CORRUGATED PERFORATED METAL PANEL OVERLAY  
FINISH: BRUSHED STAINLESS STEEL
- DR-8 HOLLOW METAL DOOR  
FINISH: PAINT EW-7B

**EXTERIOR FINISH LIST**

SCALE: 6" = 1'-0"



As indicated

Gensler

AUDI of McKinney

A04 - COLOR EXTERIOR ELEVATIONS - CAR WASH

09/10/2015