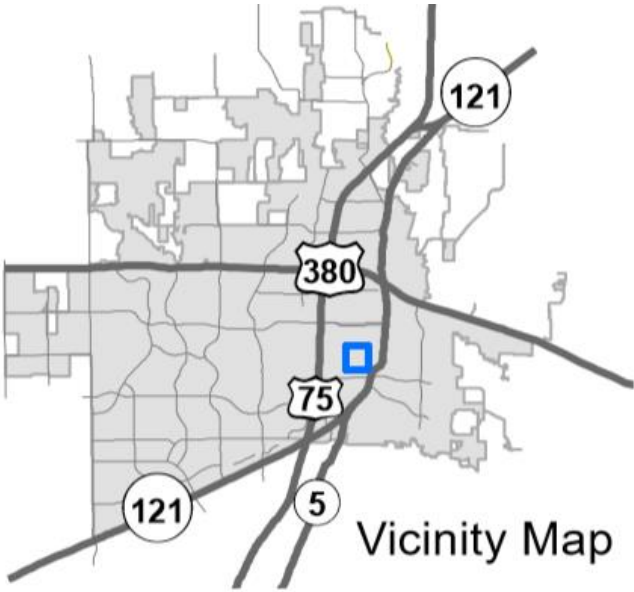


Salvation Army

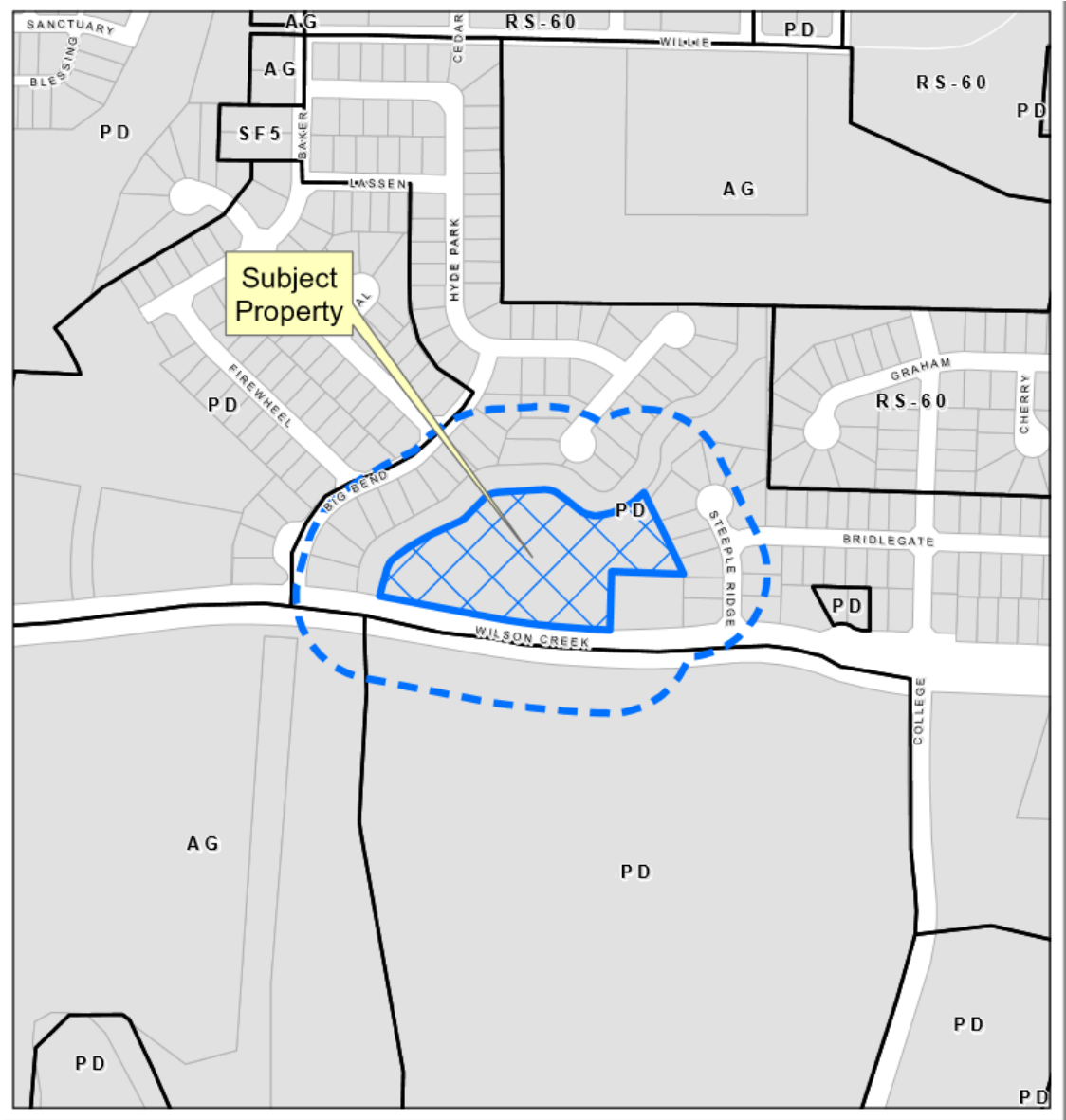
Emergency Overnight Warming Station

20-0114Z

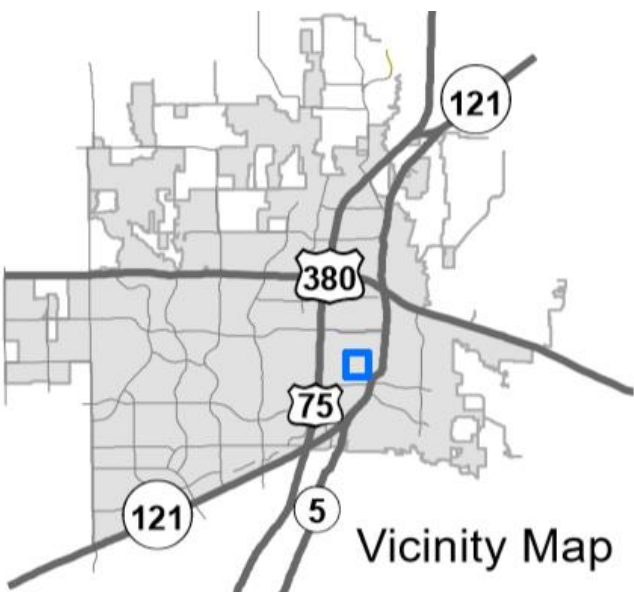
Location Map



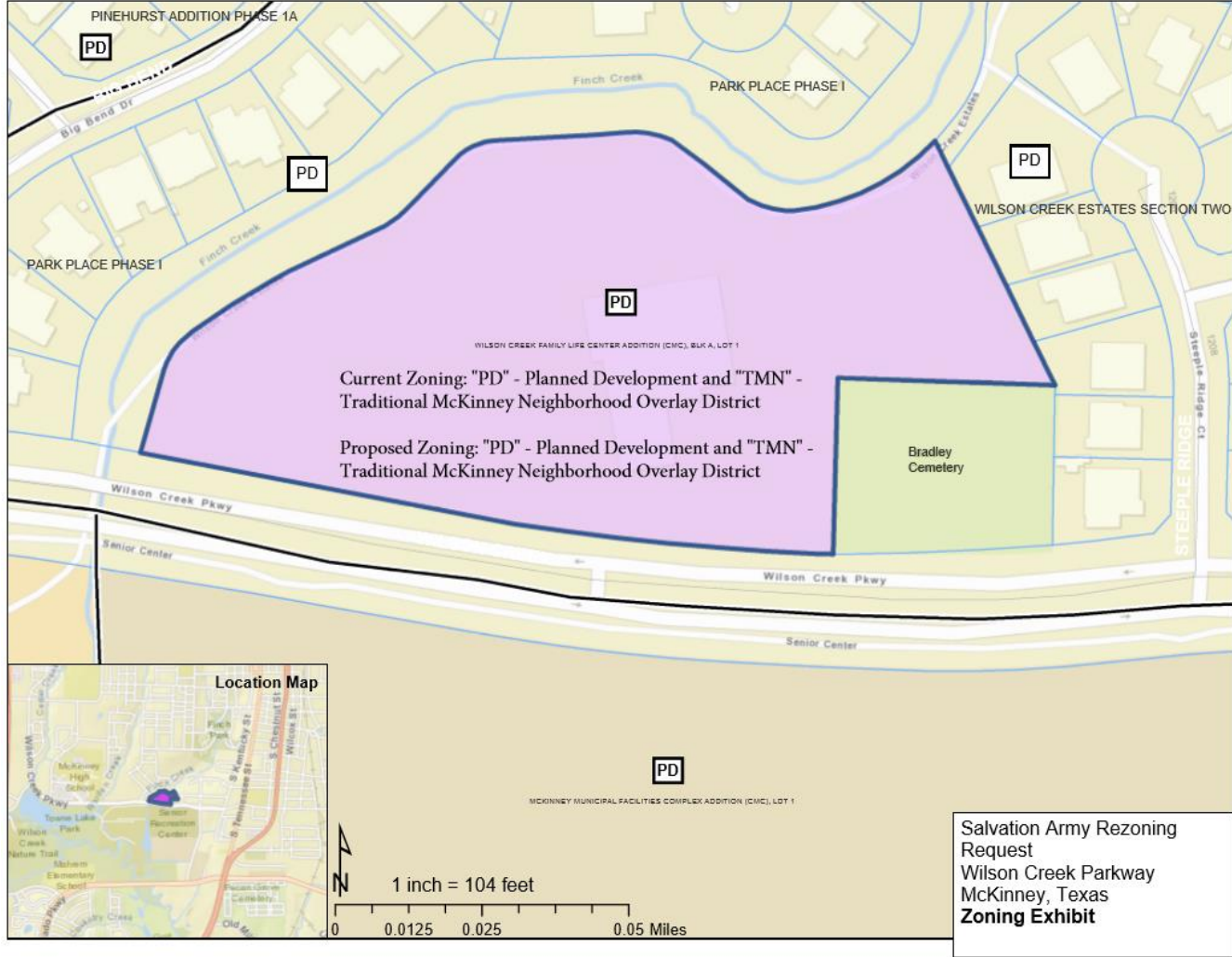
Vicinity Map



Aerial Exhibit



Proposed Zoning Exhibit



Proposed Zoning Request

- Planned Development to allow Emergency Overnight Warming Station (cold weather)
- Inclusive of lodging
- Operation limited to days when temperature is forecast to be 40°F or less
- Hours of operation 6:00 PM – 8:00 AM
- Up to 50 guests, ability to request additional guests through Council approval of Temporary Use Permit (with annual renewal)
- Chief of Police has ability to require security personnel

