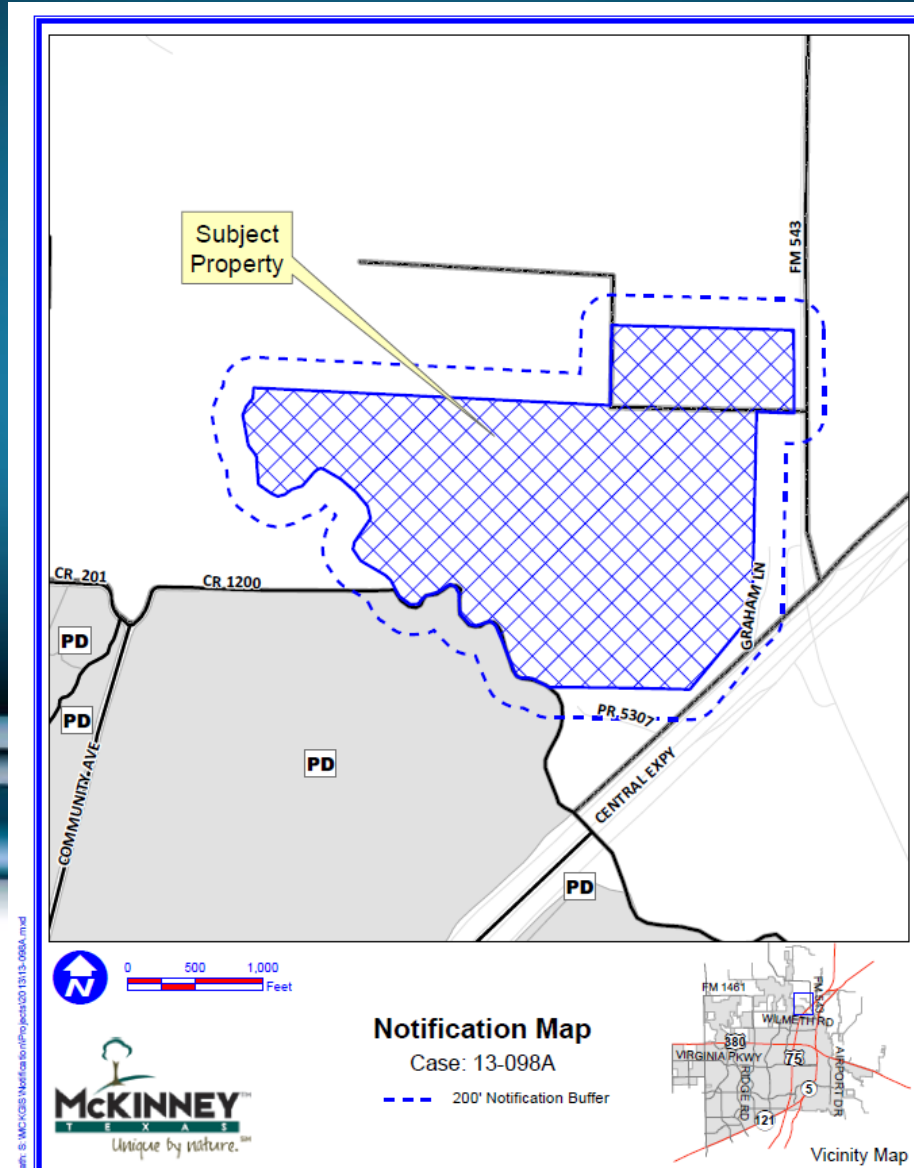


Case No. 13-098A

Generally Located on the Northwest Corner of F.M.
543 and U.S. Highway 75 (Central Expressway)



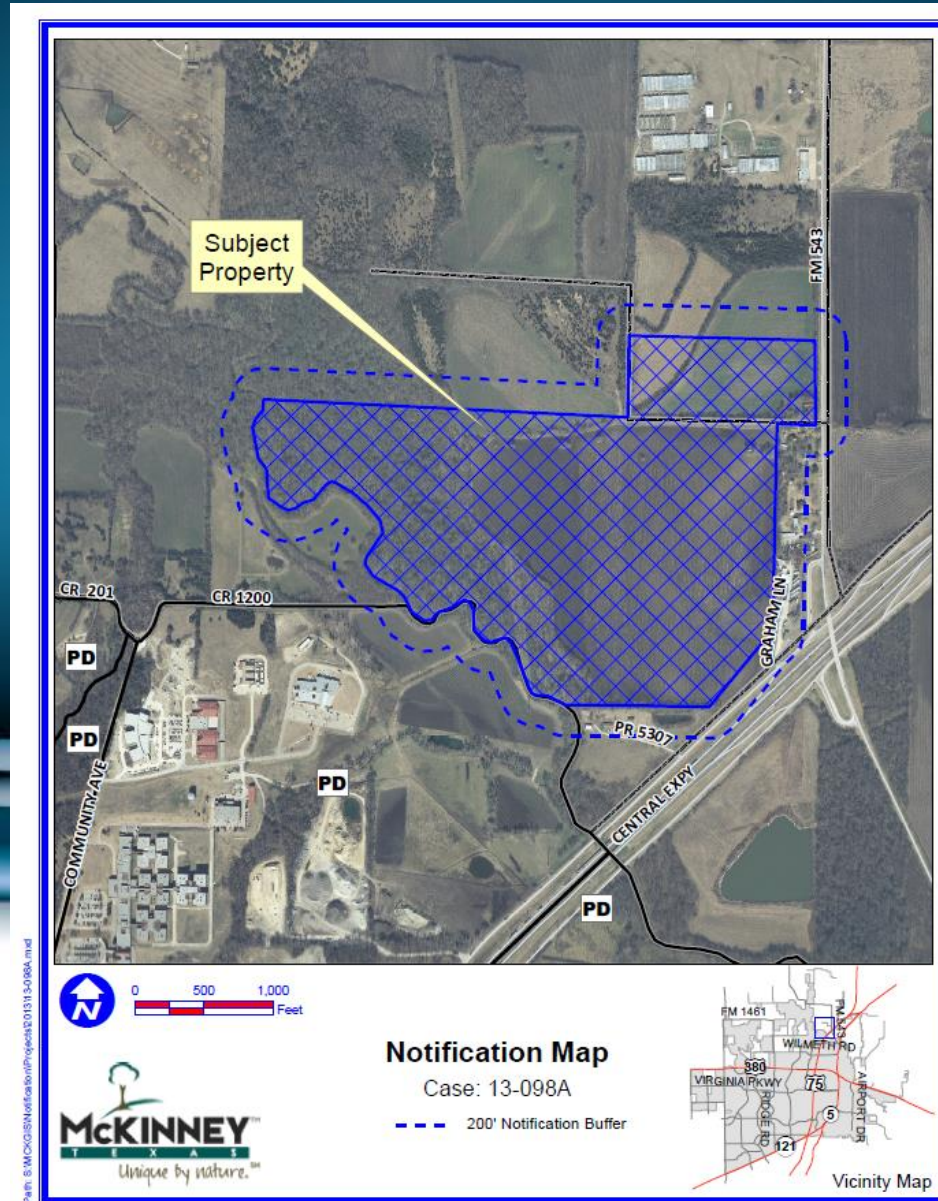
Location Map



Path: S:\MCKINNEY\Utilities\Projects\2013\13-098A.mxd

DISCLAIMER: This map and information contained in it were developed exclusively for use by the City of McKinney. Any use or reliance on this map by anyone else is at that party's risk and without liability to the City of McKinney, its officials or employees for any discrepancies, errors, or variances which may exist.

Aerial Exhibit



DISCLAIMER: This map and information contained in it were developed exclusively for use by the City of McKinney. Any use or reliance on this map by anyone else is at that party's risk and without liability to the City of McKinney, its officials or employees for any discrepancies, errors, or variances which may exist.

STAFF RECOMMENDATION:

Staff recommends approval of the annexation request.

