

Case No. 12-101SP

Conduct a Public Hearing to Consider/Discuss/Act on the Request by the City of McKinney, for Approval of a Site Plan for Two Baseball Fields and a Skatepark (Gabe Nesbitt Community Park), Approximately 160.00 Acres, Located on the Southeast Corner of Eldorado Parkway and Alma Road.

Aerial Exhibit

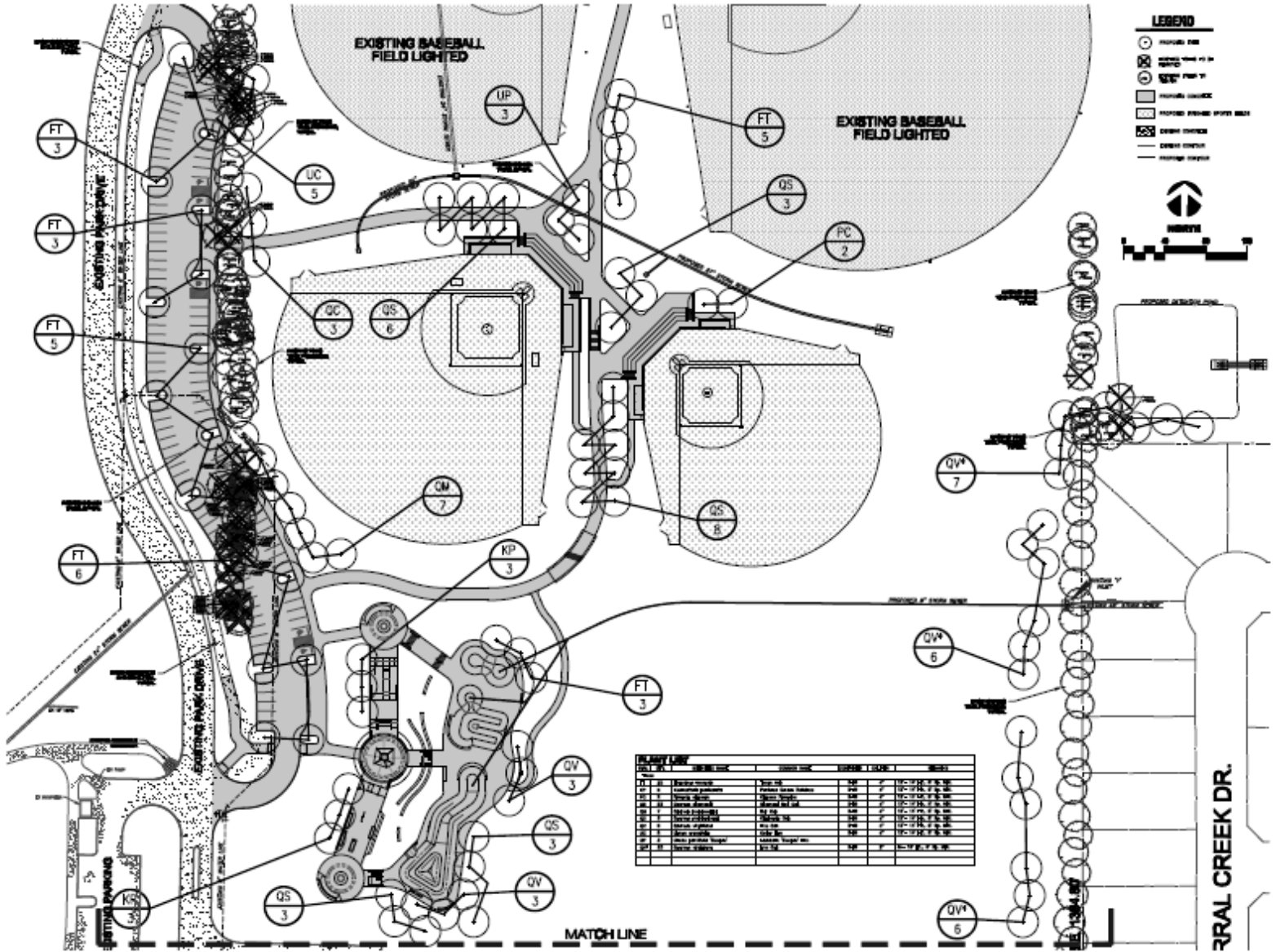


Photo: © McKinney, Texas Aerial Photography, 2012, 1019P.mxd

DISCLAIMER: This map and information contained in it were developed exclusively for use by the City of McKinney. Any use or reliance on this map by anyone else is at that party's risk and without liability to the City of McKinney, its officials or employees for any discrepancies, errors, or omissions which may exist.



Proposed Landscape Plan (pg. 1)



Preliminary
Review Only
Not for
Construction

**GABE NESBITT BASEBALL
COMMUNITY PARK**
CITY OF MCKINNEY, PARKS, RECREATION
AND OPEN SPACE DEPARTMENT

DATE	05.11.12
BY	LANARC
APP. BY	LANARC
DATE	MAY 28, 2012
TYPE	LANDSCAPE PLAN
NO.	LA-1P

© 2012 LANARC DESIGN INC. ALL RIGHTS RESERVED. THIS PLAN IS THE PROPERTY OF LANARC DESIGN INC. AND IS TO BE USED ONLY FOR THE PROJECT AND SITE SPECIFICALLY IDENTIFIED HEREON. NO PART OF THIS PLAN IS TO BE REPRODUCED OR TRANSMITTED IN ANY FORM OR BY ANY MEANS, ELECTRONIC OR MECHANICAL, INCLUDING PHOTOCOPYING, RECORDING, OR BY ANY INFORMATION STORAGE AND RETRIEVAL SYSTEM, WITHOUT THE WRITTEN PERMISSION OF LANARC DESIGN INC.

Staff Recommendation

- Staff recommends approval of the site plan as outlined in the Staff Report