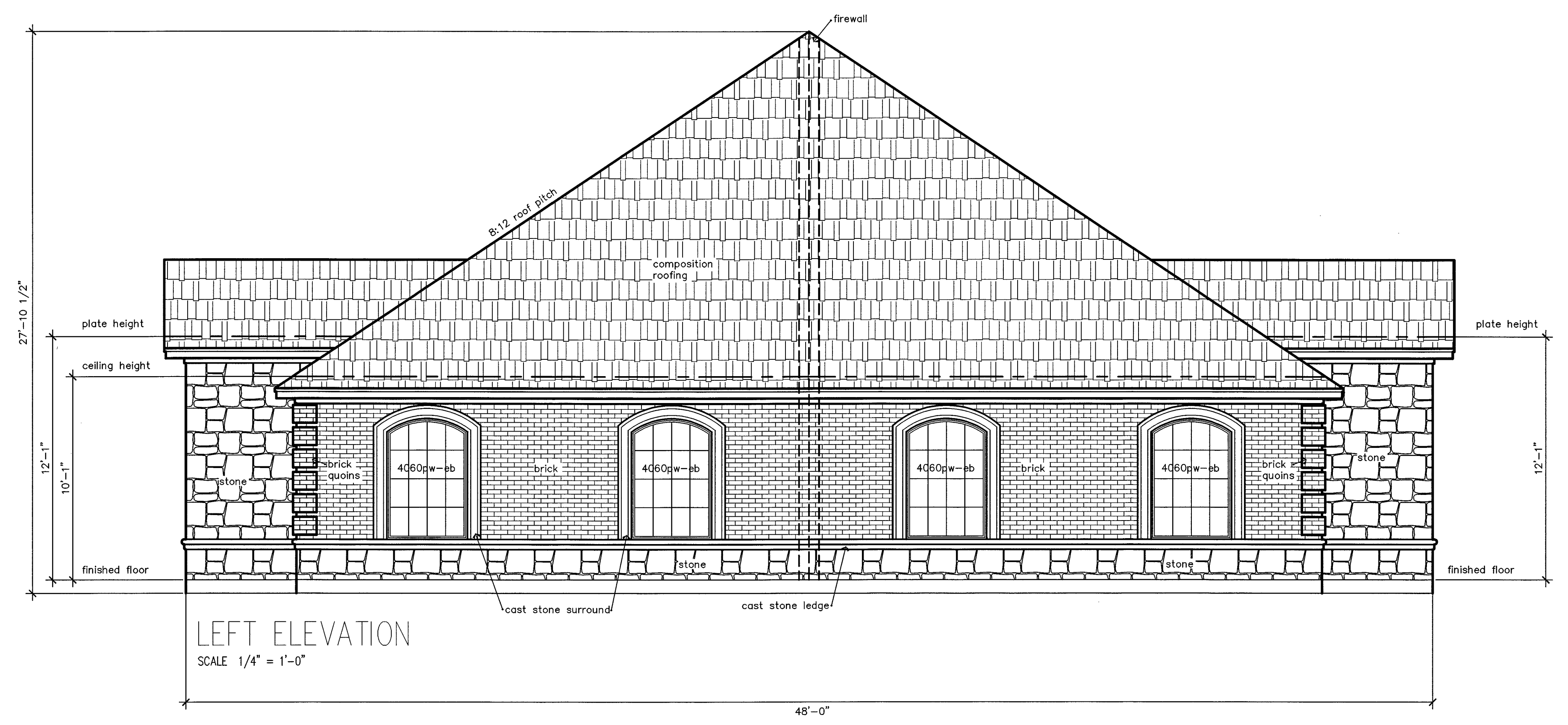
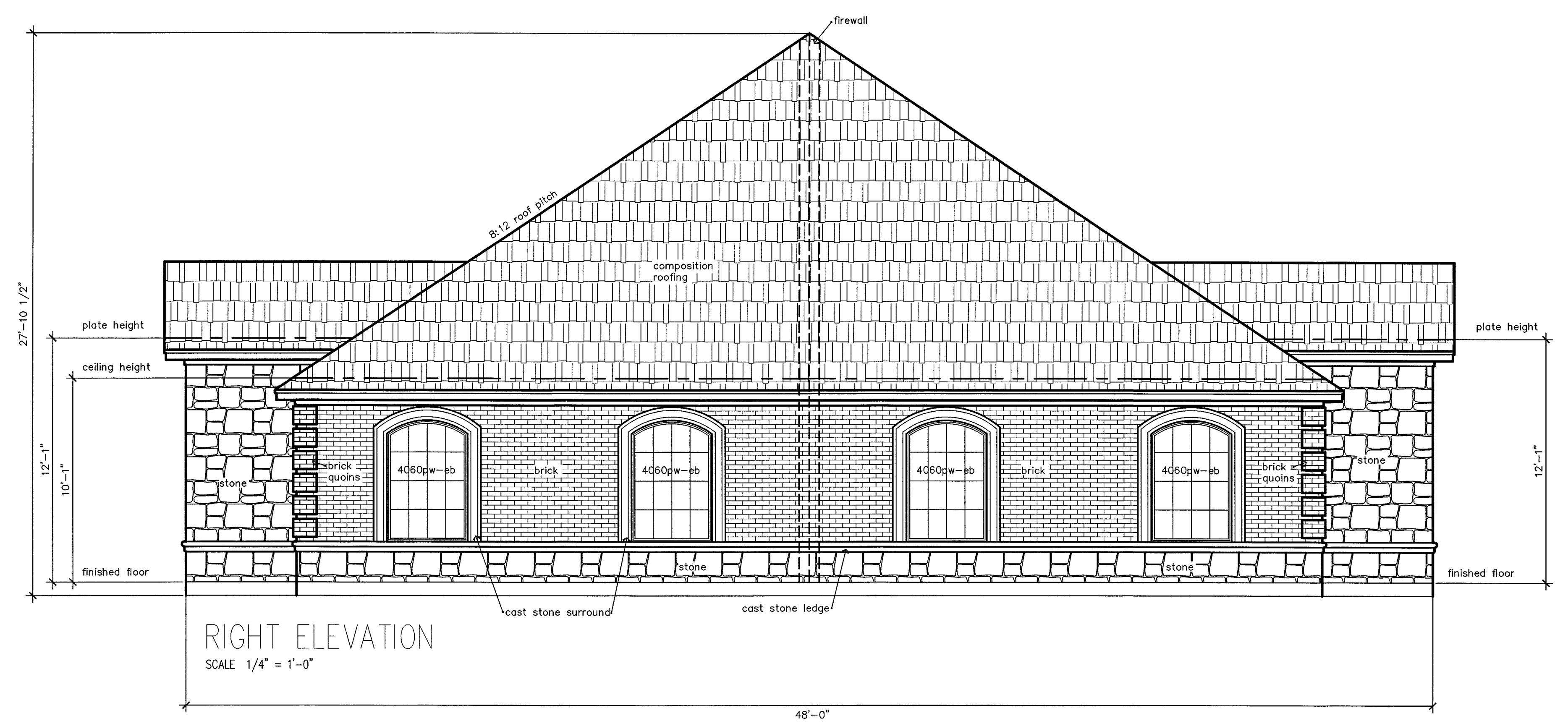


Please Note: Prior to any construction or installation, please verify the materials, dimensions, conditions and prevailing codes with the manufacturer of the materials. The manufacturer's instructions shall be brought to the attention of the architect and the contractor. The architect shall be responsible for the selection of materials. The architect shall not be responsible for the selection of materials. The architect shall not be responsible for the selection of materials. The architect shall not be responsible for the selection of materials.



KORREL DESIGNS
COMMERCIAL + RESIDENTIAL
800 Central Parkway East, Suite 200, Plano, Texas 75074 (972) 423-4500 - WEB SITE: www.korel.com

Hudson Crossing
Office Condos
McKinney, Texas

MARCH, 2013

copyright (c) 2009 Korel Design
Sheet:
02

BUILDINGS F & G