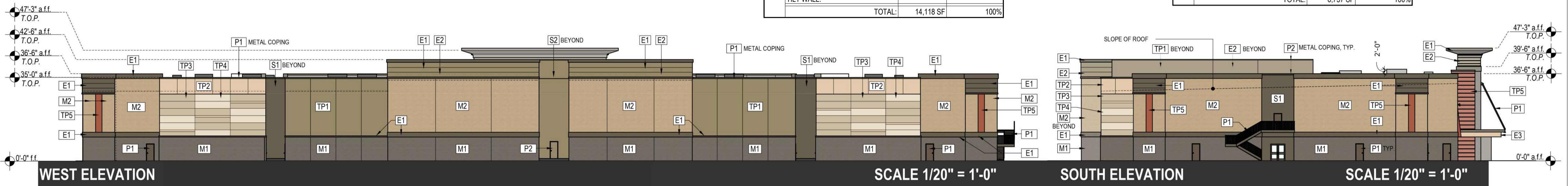


**EAST FACADE MATERIAL AREAS & PERCENTAGES:**

|                                     | AREA (SF)        | PERCENTAGE  |
|-------------------------------------|------------------|-------------|
| BRICK VENEER:                       | 7,269 SF         | 52%         |
| EIFS:                               | 1,985 SF         | 14%         |
| STUCCO:                             | 480 SF           | 3%          |
| CURTAIN WALL:                       | 929 SF           | 7%          |
| ARCHITECTURALLY FINISHED TILT WALL: | 3,455 SF         | 24%         |
| <b>TOTAL:</b>                       | <b>14,118 SF</b> | <b>100%</b> |

**NORTH FACADE MATERIAL AREAS & PERCENTAGES:**

|                                     | AREA (SF)       | PERCENTAGE  |
|-------------------------------------|-----------------|-------------|
| BRICK VENEER:                       | 4,427 SF        | 66%         |
| EIFS:                               | 844 SF          | 12%         |
| STUCCO:                             | 410 SF          | 6%          |
| ARCHITECTURALLY FINISHED TILT WALL: | 1,066 SF        | 16%         |
| <b>TOTAL:</b>                       | <b>6,737 SF</b> | <b>100%</b> |

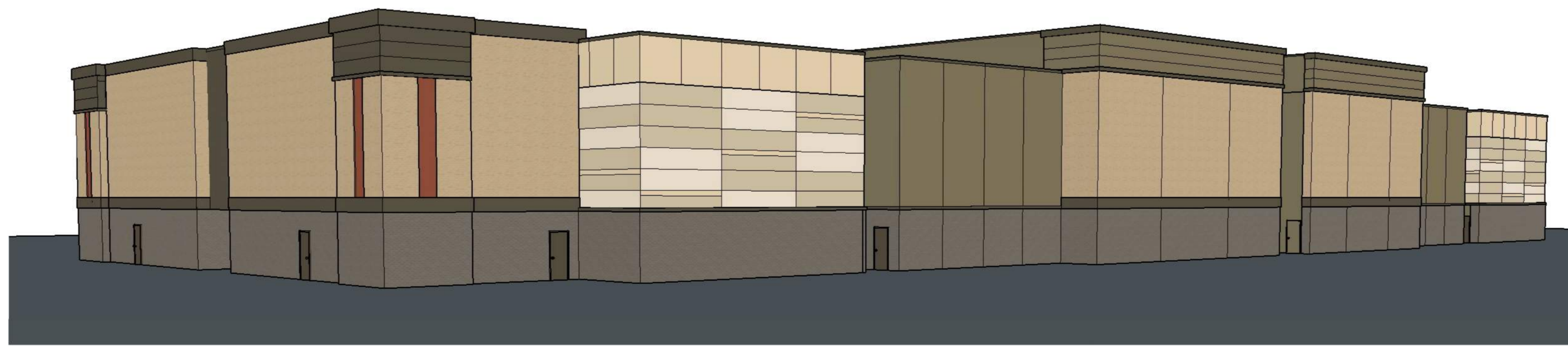


**WEST FACADE MATERIAL AREAS & PERCENTAGES:**

|                                     | AREA (SF)        | PERCENTAGE  |
|-------------------------------------|------------------|-------------|
| BRICK VENEER:                       | 7,482 SF         | 52%         |
| EIFS:                               | 1,634 SF         | 11%         |
| STUCCO:                             | 1,065 SF         | 8%          |
| ARCHITECTURALLY FINISHED TILT WALL: | 4,276 SF         | 29%         |
| <b>TOTAL:</b>                       | <b>14,457 SF</b> | <b>100%</b> |

**SOUTH FACADE MATERIAL AREAS & PERCENTAGES:**

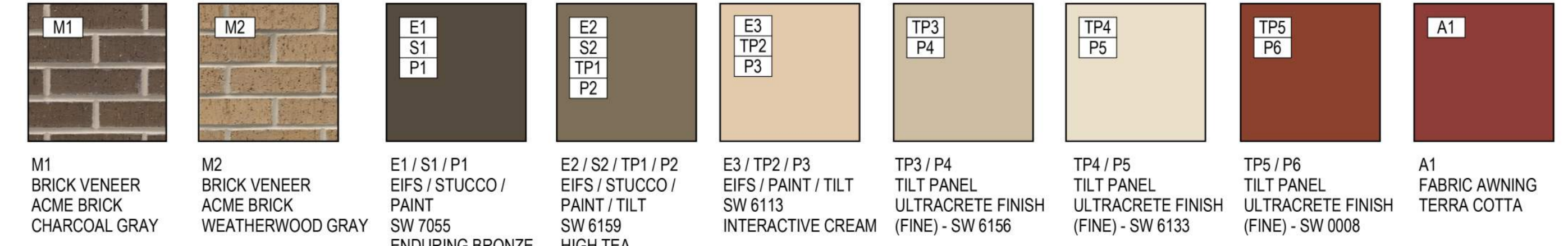
|                                     | AREA (SF)       | PERCENTAGE  |
|-------------------------------------|-----------------|-------------|
| BRICK VENEER:                       | 4,427 SF        | 66%         |
| EIFS:                               | 844 SF          | 12%         |
| STUCCO:                             | 410 SF          | 6%          |
| ARCHITECTURALLY FINISHED TILT WALL: | 1,066 SF        | 16%         |
| <b>TOTAL:</b>                       | <b>6,737 SF</b> | <b>100%</b> |



**ELEVATION KEY**

|                                     |   |   |
|-------------------------------------|---|---|
| <b>P1</b> SW 7055 ENDURING BRONZE   | <b>M1</b> BRICK VENEER: CHARCOAL GRAY (RUNNING BOND)    | <b>L1</b> DECORATIVE LIGHTING SCENCE  |
| <b>P2</b> SW 6159 HIGH TEA          | <b>M2</b> BRICK VENEER: WEATHERWOOD GRAY (RUNNING BOND) | <b>TP1</b> ARCHITECTURALLY FINISHED TILT WALL: SHERWIN WILLIAMS ULTRACRETE - FINE (SW 6159) |
| <b>P3</b> SW 6113 INTERACTIVE CREAM | <b>E1</b> P1 PAINTED EIFS                               | <b>TP2</b> ARCHITECTURALLY FINISHED TILT WALL: SHERWIN WILLIAMS ULTRACRETE - FINE (SW 6113) |
| <b>P4</b> SW 6156 RAMIE             | <b>E2</b> P2 PAINTED EIFS                               | <b>TP3</b> ARCHITECTURALLY FINISHED TILT WALL: SHERWIN WILLIAMS ULTRACRETE - FINE (SW 6156) |
| <b>P5</b> SW 6133 MUSLIN            | <b>E3</b> P3 PAINTED EIFS                               | <b>TP4</b> ARCHITECTURALLY FINISHED TILT WALL: SHERWIN WILLIAMS ULTRACRETE - FINE (SW 6133) |
| <b>P6</b> SW 0008 CAJUN RED         | <b>GL1</b> GLAZING CLEAR                                | <b>TP5</b> ARCHITECTURALLY FINISHED TILT WALL: SHERWIN WILLIAMS ULTRACRETE - FINE (SW 0008) |
| <b>S1</b> P1 PAINTED STUCCO         | <b>GL2</b> GLAZING WHITE SPANDREL                       |   |
| <b>S2</b> P2 PAINTED STUCCO         | <b>A1</b> AWNING FABRIC: SUNBRELLA - TERRA COTTA        |   |

NOTES:  
- EXTERIOR METAL DOORS TO BE PAINTED P1, P2 OR P6 TO MATCH ADJACENT FACE  
- ALL GLAZING TO BE "SOLARBAN 60 (2) SOLARGRAY + CLEAR" - VISIBLE LIGHT REFLECTANCE OF 6%  
- ALL EXPOSED TILT PANELS TO RECEIVE SHERWIN WILLIAMS "ULTRA CRETE FINE TEXTURE" TOP COAT (SIMILAR IN FINISH TO EIFS)



**ARCHITECT**  
 BECK ARCHITECTURE, LLC  
 1807 ROSS AVE. SUITE 500  
 DALLAS, TX 75201  
 214.303.6200  
 ATTN. SCOTT SOMERVILLE

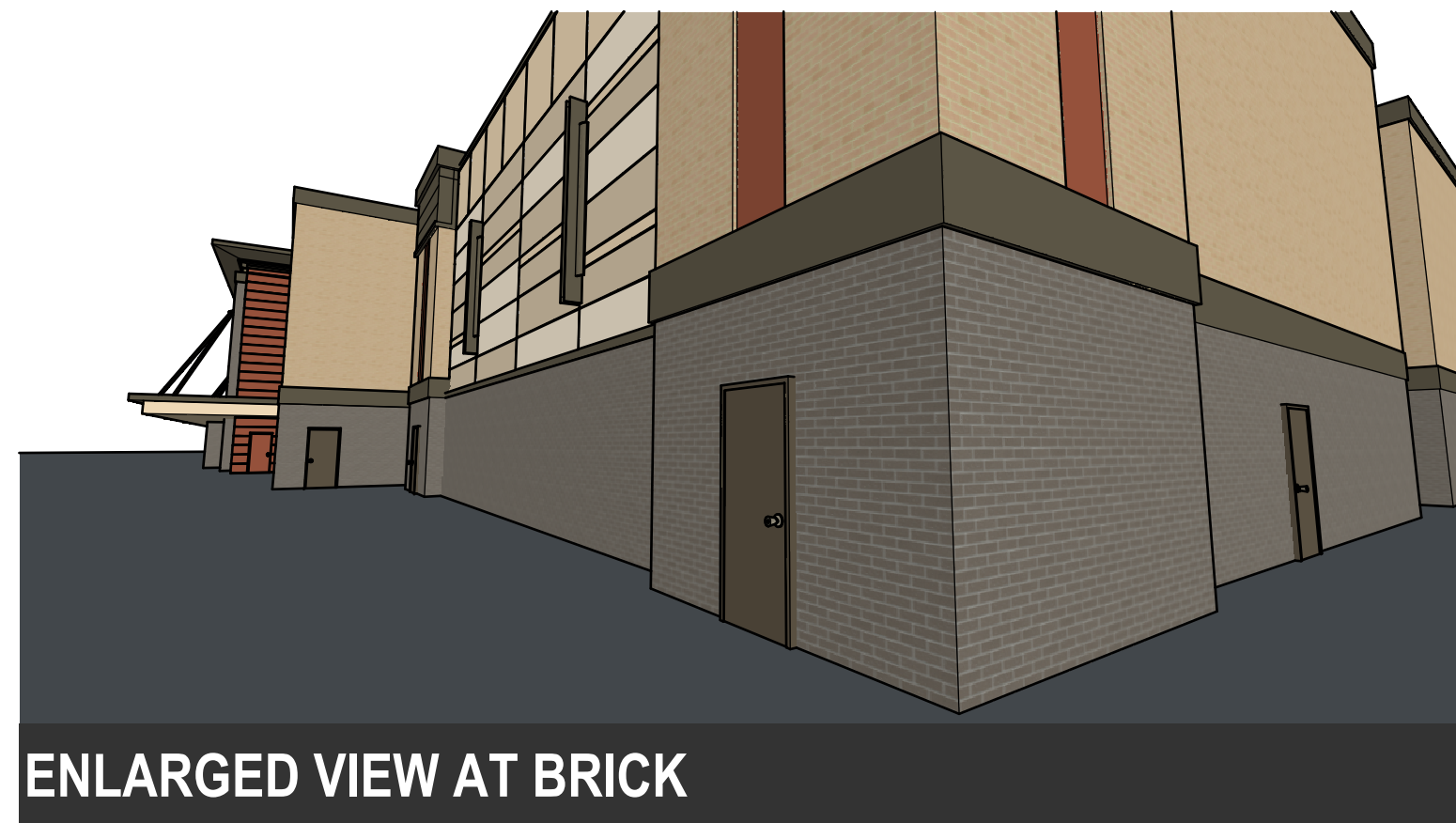
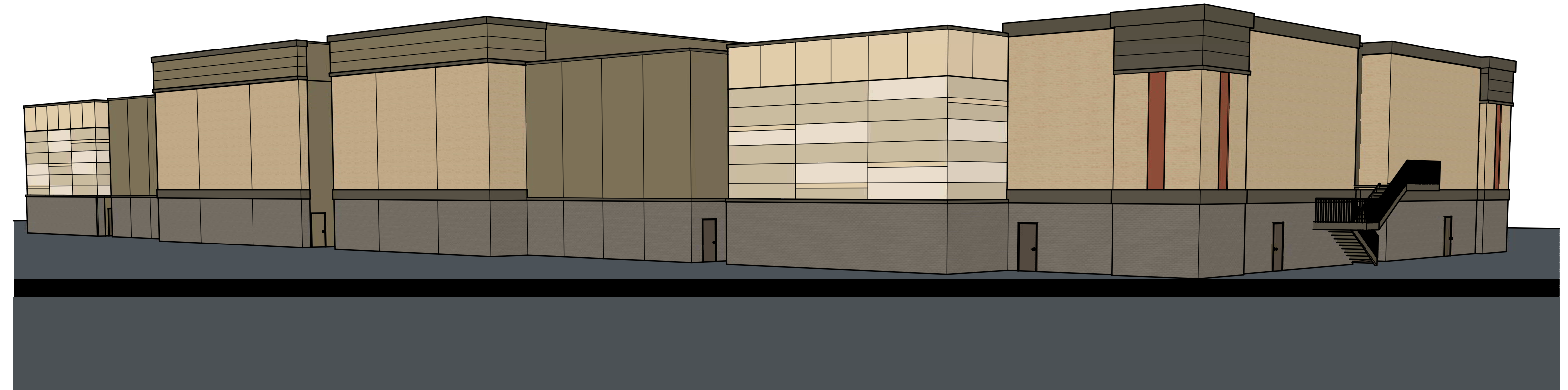
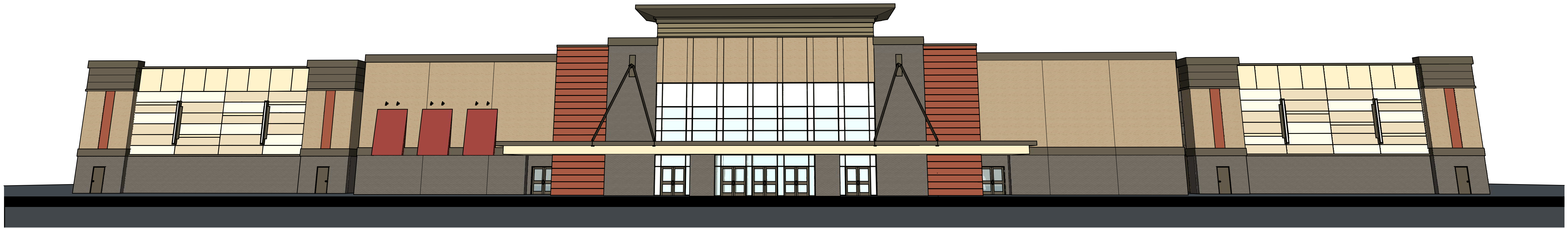
**DEVELOPER**  
 THE SEITZ GROUP  
 1110 COWAN RD.  
 CELINA, TX 75009

**CLIENT**  
 CINEMARK USA, INC  
 3900 DALLAS PARKWAY  
 PLANO, TX 75093  
 972.665.1100  
 ATTN. DON HARTON

**PROJECT**  
 CUSA MCKINNEY XD14  
 PROJECT NO.  
 170889.50

**ISSUE**  
 10.26.17

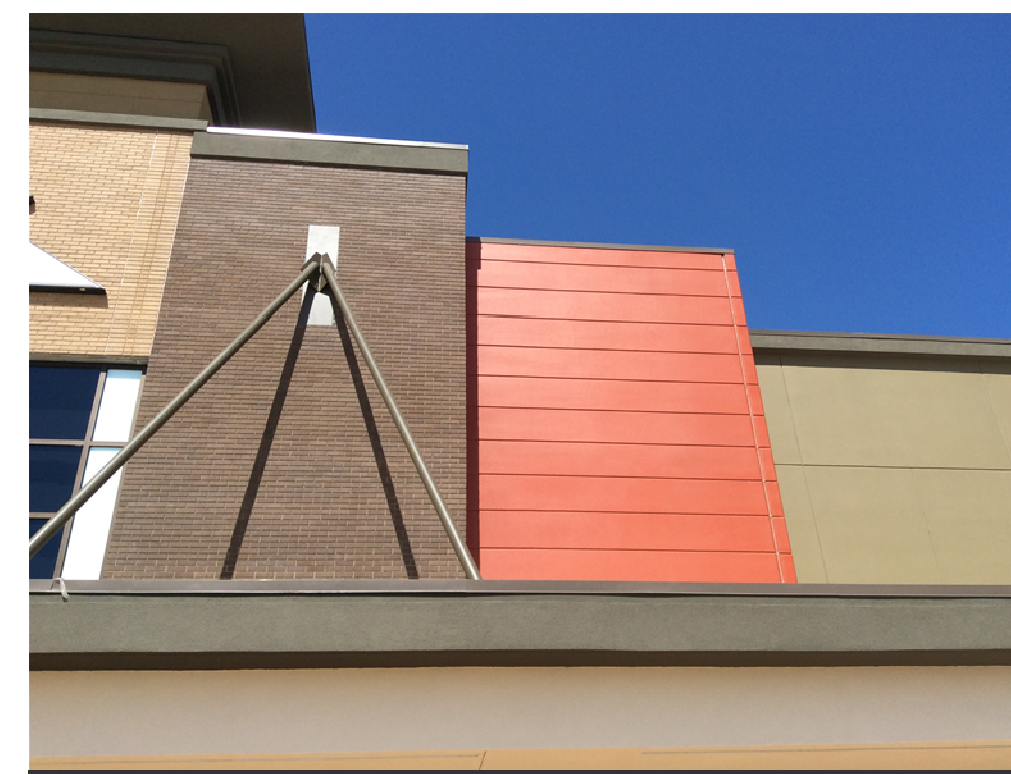
**LOCATION**  
 MCKINNEY, TX



ENLARGED VIEW AT BRICK



ARCHITECTURALLY FINISHED TILT WALL EXAMPLES



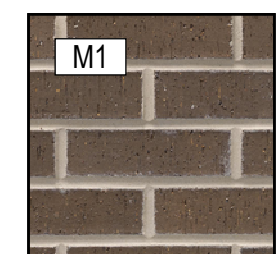
PREVIOUSLY EXECUTED WORK OF SIMILAR DESIGN



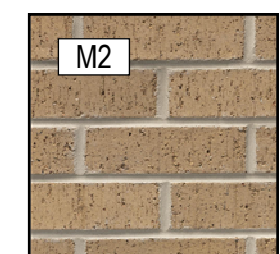
**ELEVATION KEY**

|           |                           |            |   |            |  |
|-----------|---------------------------|------------|---|------------|--|
| <b>P1</b> | SW 7055 ENDURING BRONZE   | <b>M1</b>  | BRICK VENEER: CHARCOAL GRAY (RUNNING BOND)    | <b>L1</b>  | DECORATIVE LIGHTING SCENCE   |
| <b>P2</b> | SW 6159 HIGH TEA          | <b>M2</b>  | BRICK VENEER: WEATHERWOOD GRAY (RUNNING BOND) | <b>TP1</b> | ARCHITECTURALLY FINISHED TILT WALL: SHERWIN WILLIAMS ULTRACRETE - FINE (SW 6159) |
| <b>P3</b> | SW 6113 INTERACTIVE CREAM | <b>E1</b>  | P1 PAINTED EIFS                               | <b>TP2</b> | ARCHITECTURALLY FINISHED TILT WALL: SHERWIN WILLIAMS ULTRACRETE - FINE (SW 6113) |
| <b>P4</b> | SW 6156 RAMIE             | <b>E2</b>  | P2 PAINTED EIFS                               | <b>TP3</b> | ARCHITECTURALLY FINISHED TILT WALL: SHERWIN WILLIAMS ULTRACRETE - FINE (SW 6156) |
| <b>P5</b> | SW 6133 MUSLIN            | <b>E3</b>  | P3 PAINTED EIFS                               | <b>TP4</b> | ARCHITECTURALLY FINISHED TILT WALL: SHERWIN WILLIAMS ULTRACRETE - FINE (SW 6133) |
| <b>P6</b> | SW 0008 CAJUN RED         | <b>GL1</b> | GLAZING CLEAR                                 | <b>TP5</b> | ARCHITECTURALLY FINISHED TILT WALL: SHERWIN WILLIAMS ULTRACRETE - FINE (SW 0008) |
| <b>S1</b> | P1 PAINTED STUCCO         | <b>GL2</b> | GLAZING WHITE SPANDREL                        |            |  |
| <b>S2</b> | P2 PAINTED STUCCO         | <b>A1</b>  | AWNING FABRIC: SUNBRELLA - TERRA COTTA        |            |  |

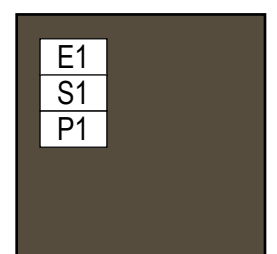
NOTES:  
 - EXTERIOR METAL DOORS TO BE PAINTED P1, P2 OR P6 TO MATCH ADJACENT FACE  
 - ALL GLAZING TO BE "SOLARBAN 60 (2) SOLARGRAY + CLEAR" - VISIBLE LIGHT REFLECTANCE OF 6%  
 - ALL EXPOSED TILT PANELS TO RECEIVE SHERWIN WILLIAMS "ULTRA CRETE FINE TEXTURE" TOP COAT (SIMILAR IN FINISH TO EIFS)



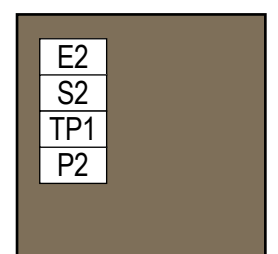
M1  
BRICK VENEER  
ACME BRICK  
CHARCOAL GRAY



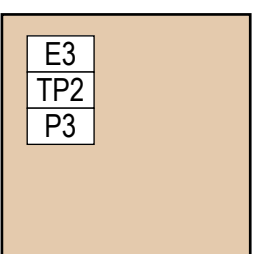
M2  
BRICK VENEER  
ACME BRICK  
WEATHERWOOD GRAY



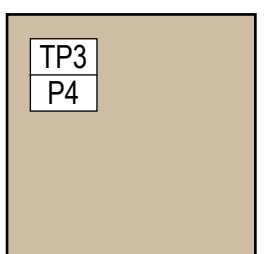
E1 / S1 / P1  
EIFS / STUCCO /  
PAINT  
SW 7055  
ENDURING BRONZE



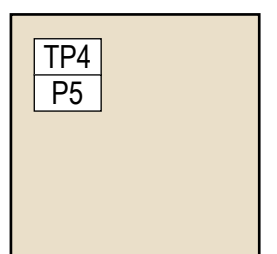
E2 / S2 / TP1 / P2  
EIFS / STUCCO /  
PAINT / TILT  
SW 6159  
HIGH TEA



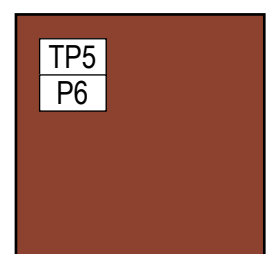
E3 / TP2 / P3  
EIFS / PAINT / TILT  
SW 6113  
INTERACTIVE CREAM



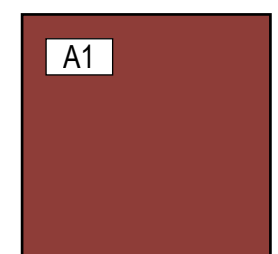
TP3 / P4  
TILT PANEL  
ULTRACRETE FINISH  
(FINE) - SW 6156



TP4 / P5  
TILT PANEL  
ULTRACRETE FINISH  
(FINE) - SW 6133



TP5 / P6  
TILT PANEL  
ULTRACRETE FINISH  
(FINE) - SW 0008



A1  
FABRIC AWNING  
TERRA COTTA

**EXTERIOR  
ELEVATIONS**