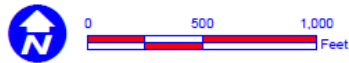
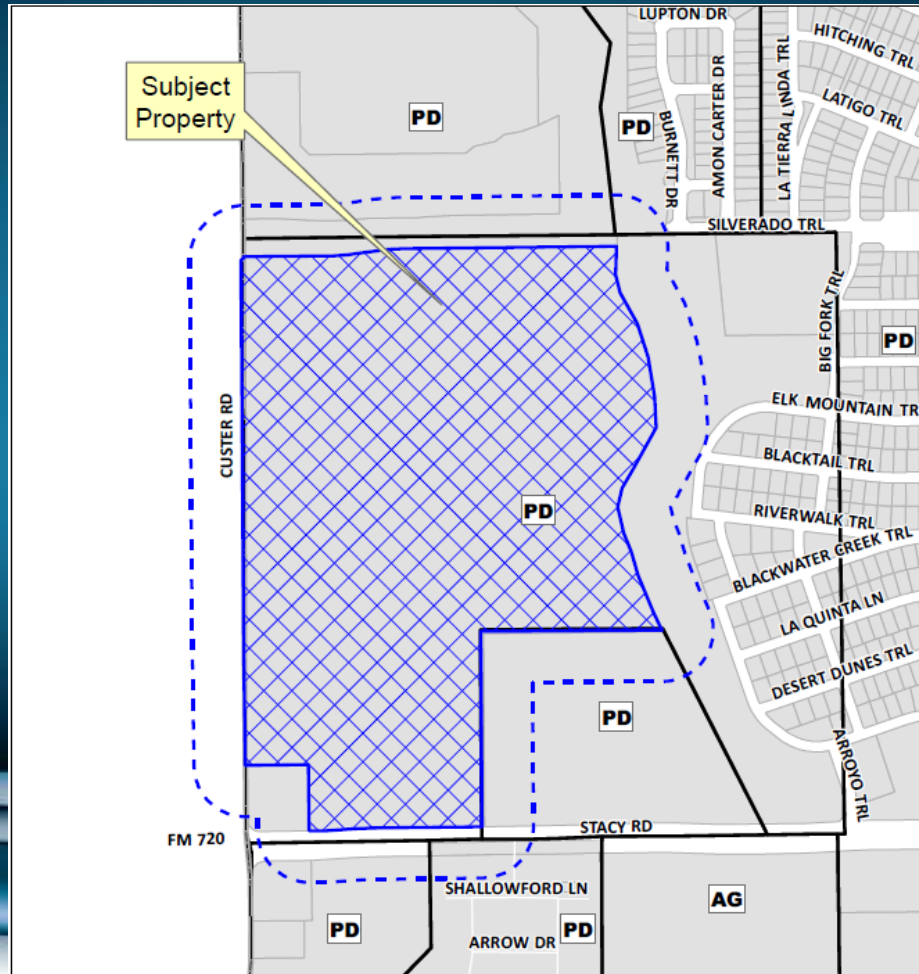


# Case No. 13-101Z

## McKinney Seven Stacy Tract



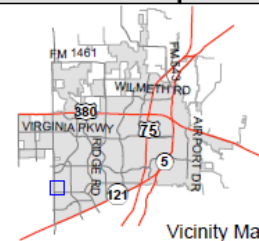
# Location Map



## Notification Map

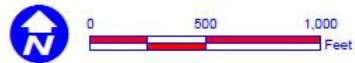
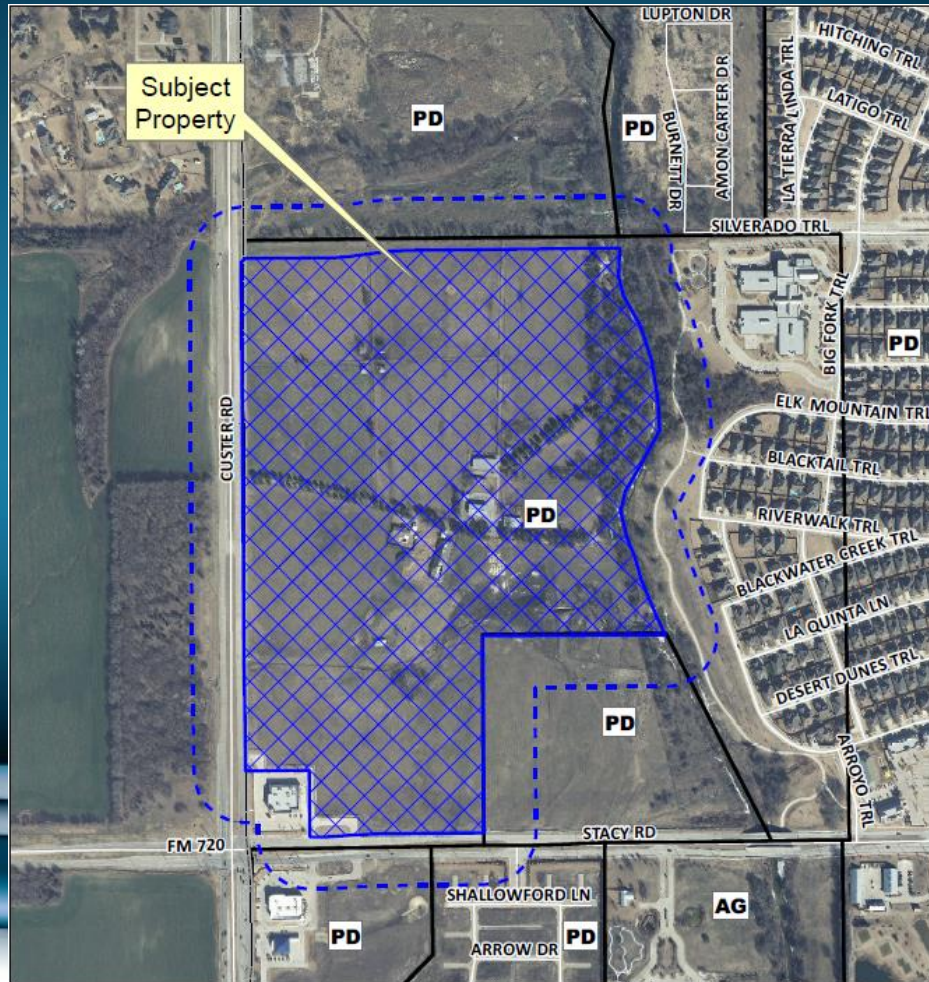
Case: 13-101Z

--- 200' Notification Buffer



Vicinity Map

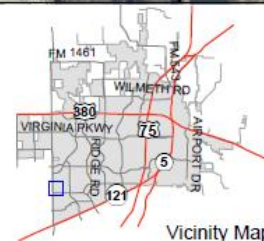
# Aerial Exhibit



## Notification Map

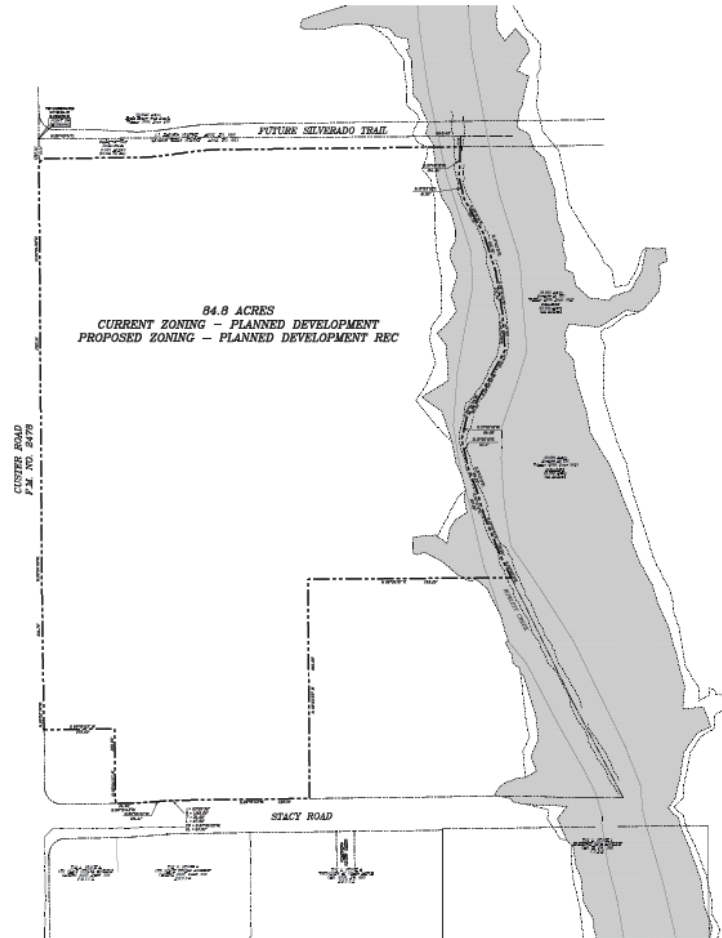
Case: 13-101Z

--- 200' Notification Buffer



Vicinity Map

# Proposed Zoning Exhibit



**RECEIVED**  
By Kathy Wright at 8:36 am, Jun 14, 2013

Issue Dates	Revisions	Date
1	1	
2	2	
3	3	
4	4	
5	5	
6	6	

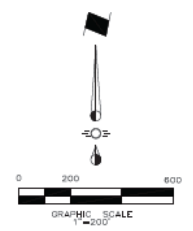
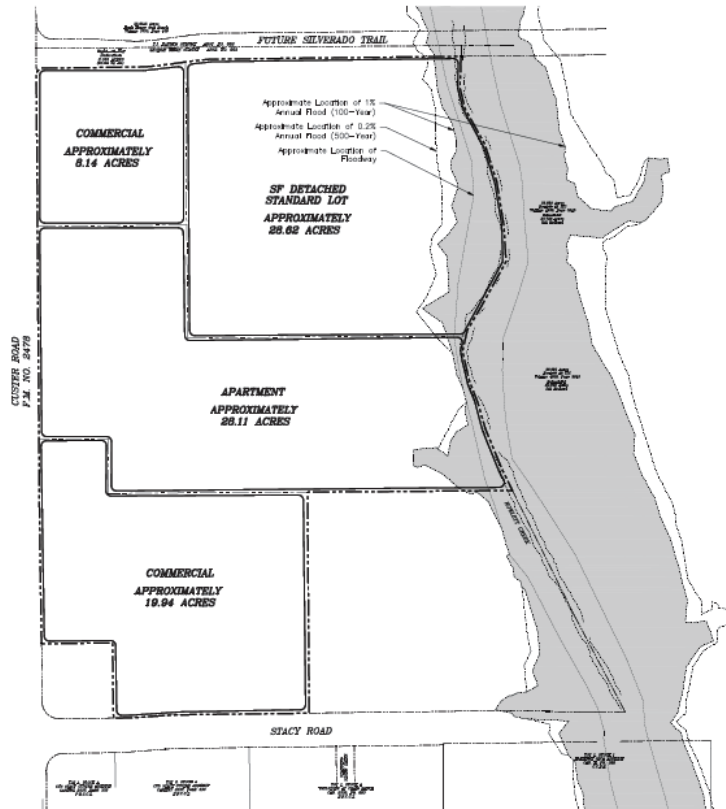
**CROSS ENGINEERING CONSULTANTS**  
 131 E. Truman St. McKinney, Texas 75069  
 972.562.4409 Fax F.E. Plan No. F-395

Drawn By: C.R.C.L.    Checked By: C.R.C.L.    Scale: 1" = 200'

**ZONING EXHIBIT**  
 MCKINNEY SEVEN STACY L.P.  
 CRAIG RANCH  
 CITY OF MCKINNEY, TEXAS

Sheet No.	EX
Project No.	

# Proposed Land Use Plan



**LEGEND**

Approximate Location of the Special Flood Hazard Area - 1% Annual Chance Flood (100-Year Flood)  
 Zone AE per FEMA Flood Panel 48085C0265J dated June 2, 2009

**RECEIVED**  
 By Kathy Wright at 7:30 am, May 28, 2013

Issue Dates	Revisions	Date
1	1	
2	2	
3	3	
4	4	
5	5	
6	6	

**CROSS ENGINEERING CONSULTANTS**  
 131 S. THOMAS ST. McKinney, Texas 75069  
 972.362.4409 Fax 972.362.4409

Drawn By: C.R.C.L. Checked By: C.R.C.L. Scale: 1" = 200'

Sheet No.	LUP
Project No.	
<b>LAND USE PLAN</b>	
<b>McKINNEY SEVEN STACY LP.</b>	
<b>CRAIG RANCH</b>	
<b>CITY OF MCKINNEY, TEXAS</b>	