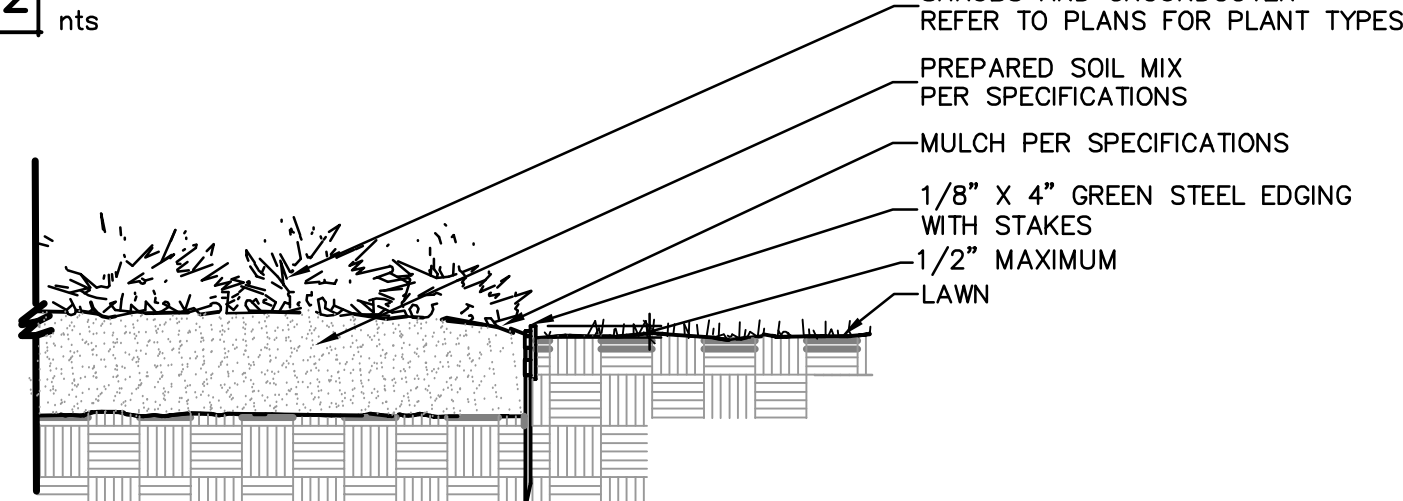
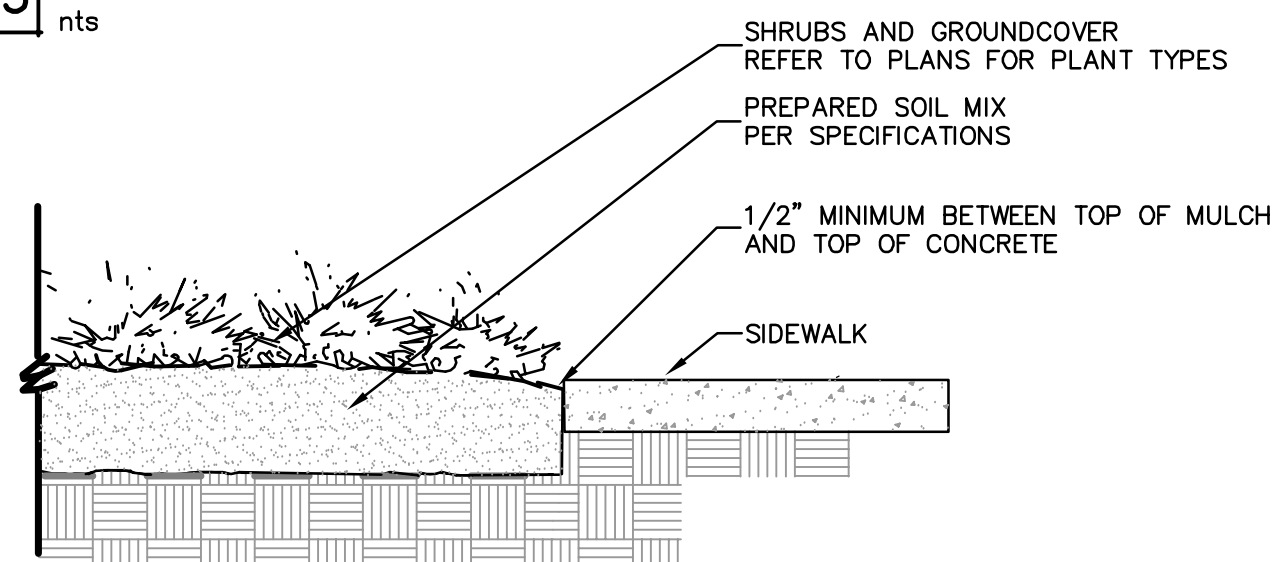


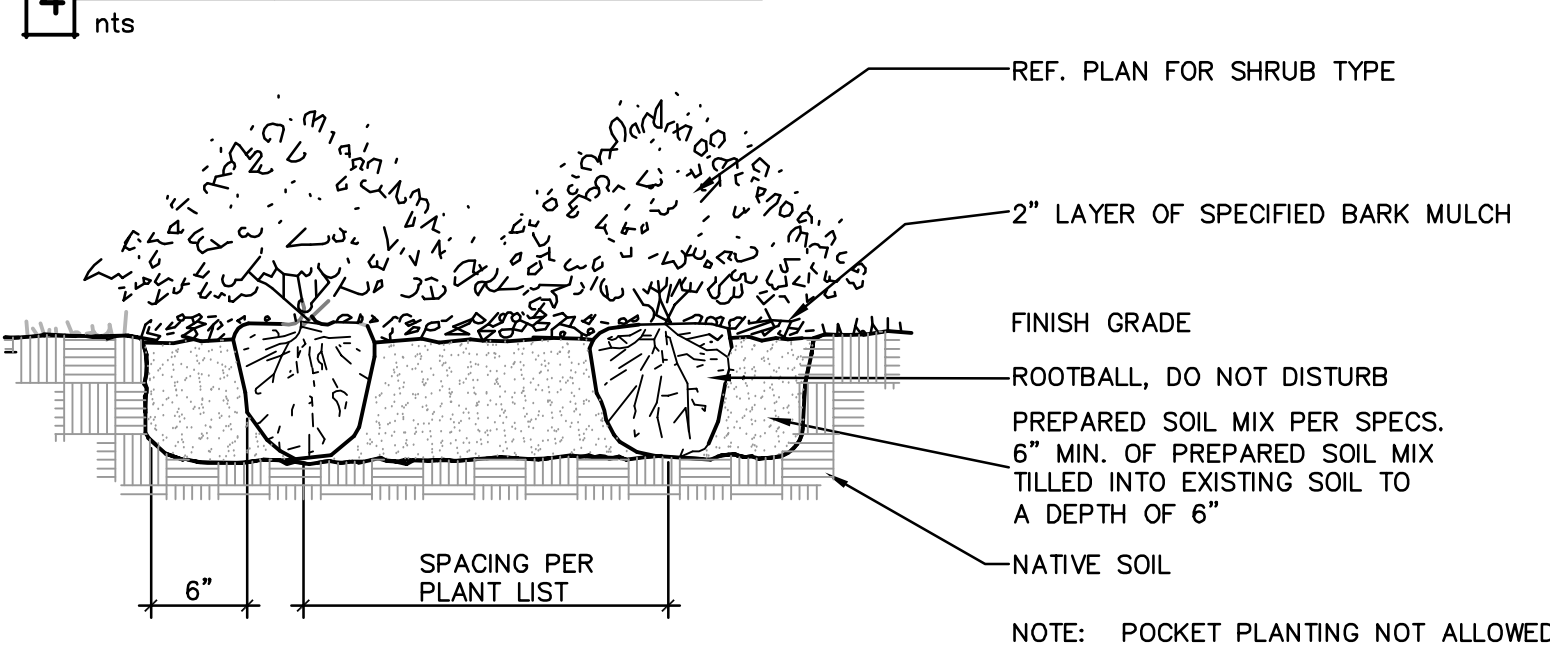
**2 tree planting detail**



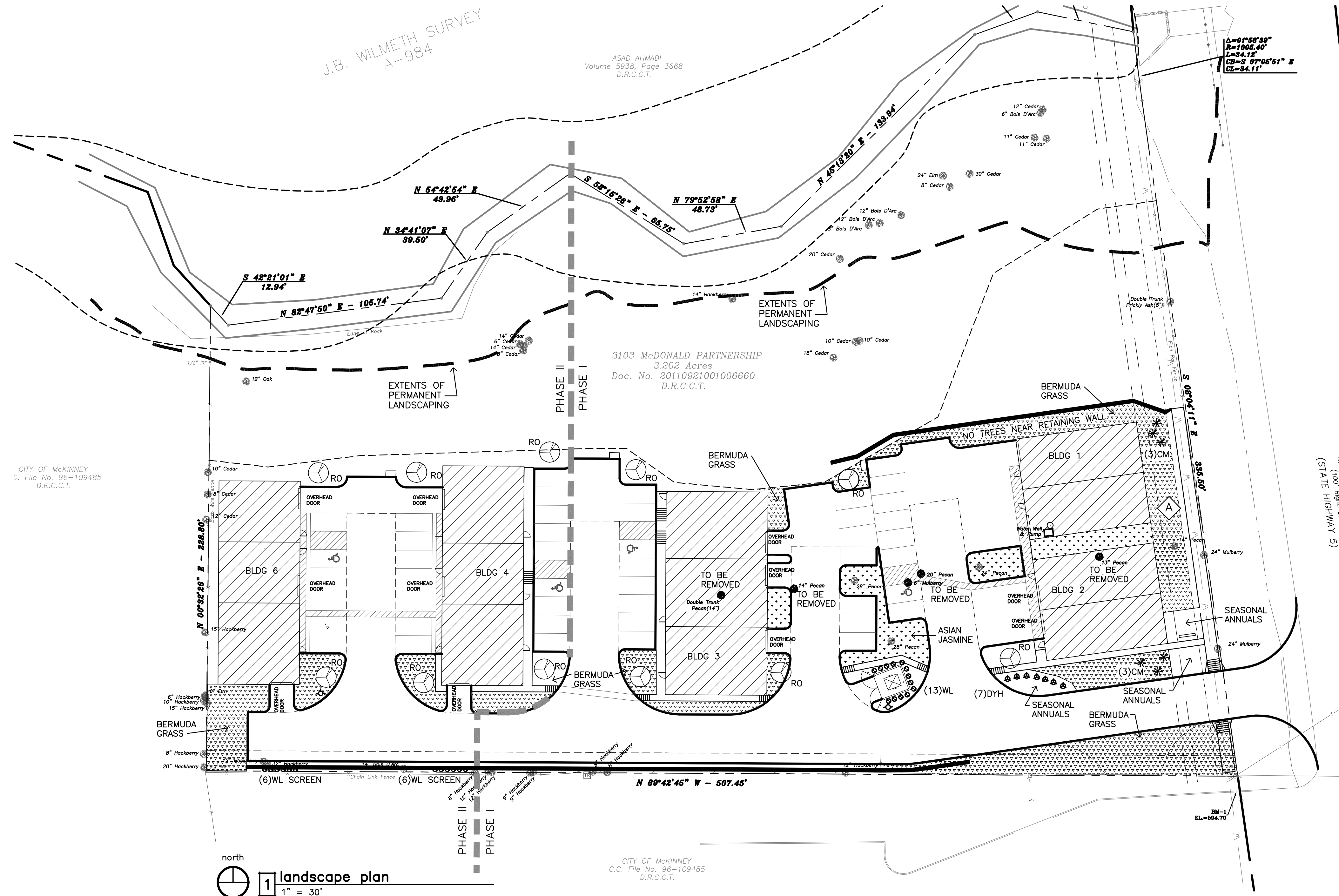
**3 steel edging detail**



**4 sidewalk/mulch detail**



**5 shrub/groundcover detail**



**1 landscape plan**  
1" = 30'

**LEGEND:**

PLANT #	PLANT NAME	SIZE	HEIGHT	SPREAD	SPACING	QTY.
RO	RED OAK - QUERCUS SHUMARDII	4" CAL	12'	4.5'	-	11
CM	CRAPE MYRTLE - LAGERSTROEMIA INDICA	10 GAL	8'	4.5'	-	6
DYH	HOLLY, DWARF YAUPON - ILEX VOMITORIA 'NANA'	5 GAL	24"	2'	36"	7
WL	LIGUSTRUM, WAX - LIGUSTRUM JAPONICUM	5 GAL	36"	2'	36"	13

**EXISTING TREE LEGEND:**  
8" (CALIPER) PECAN (SPECIES)

**TREE MITIGATION:**  
(4) PECAN TREES TO BE REMOVED NO MITIGATION REQ'D FOR THESE FOUR TREES

**TREE CREDITS:**  
AREA 'A' (1) 14" PECAN, (1) 8" PRICKLY ASH, (2) 11" CEDARS & (1) 12" CEDAR = 14 TREE CREDITS

REPLACE THOSE TREES IN THIS AREA REQ'D AS STREET TREES & PARKING AISLE TREES.

REMAINING NON PROTECTED TREES FOUND ON SITE ARE:  
MULLBERRY  
HACKBERRY  
BOIS D' ARC  
THESE TO BE REMOVED AS REQUIRED TO DEVELOP SITE.

**NOTES:**

- 1) ALL FINISH GRADES TO BE BROUGHT TO TOP OF CURB BY GENERAL CONTRACTOR TO +/- 1/10'
- 2) LANDSCAPE CONTRACTOR SHALL BE RESPONSIBLE FOR MAKING HIMSELF FAMILIAR WITH ALL UNDERGROUND UTILITIES, STRUCTURES AND LINE RUNS.
- 3) REFER TO PLANTING PLAN FOR PLANTING LOCATIONS AND PLANT MATERIALS LEGEND FOR SPECIFICATIONS. PLAN QUANTITIES TAKE PRECEDENCE OVER LEGEND COUNTS.
- 4) LANDSCAPE CONTRACTOR SHALL BE RESPONSIBLE FOR ANY COORDINATION WITH SUBCONTRACTORS AS REQUIRED TO ACCOMPLISH ALL PLANTING OPERATIONS.
- 5) LANDSCAPE CONTRACTOR IS RESPONSIBLE FOR VERIFYING ALL QUANTITIES PER DRAWINGS AND SPECIFICATIONS PROVIDED ON THESE DRAWINGS.
- 6) LANDSCAPE CONTRACTOR SHALL HAUL OFF AND REMOVE ALL OF HIS OWN DEBRIS FROM SITE.
- 7) ALL LANDSCAPE IS TO BE IRRIGATED BY AUTOMATIC UNDERGROUND SPRINKLER SYSTEM, CONTROLLED BY ELECTRONIC IRRIGATION CONTROLLER.
- 8) BED PREPARATION SHALL CONSIST OF INCORPORATING ONE 4 CUBIC FOOT BALE OF SPAGNUM PEAT MOSS AND ONE 3 CUBIC FOOT BAG OF LANDSCAPERS MIX PER 75 SQ. FT. INTO THE TOP SIX INCHES OF EXISTING SOIL.
- 9) ALL PLANT MATERIAL SHALL MEET AMERICAN NURSERY STANDARDS FOR HEIGHT AND WIDTH IN EACH CONTAINER SIZE. WITH THE EXCEPTION OF GROUND COVER BEDS, ALL PLANT MATERIAL SHALL BE MULCHED WITH 2" CEDAR MULCH (MINIMUM).
- 10) ALL REQUIRED LANDSCAPE AREAS SHALL BE PROVIDED WITH AN AUTOMATIC UNDERGROUND IRRIGATION SYSTEM WITH RAIN AND FREEZE SENSORS AND EVAPOTRANSPIRATION (ET) WEATHER BASED CONTROLLERS AND SAID IRRIGATION SYSTEM SHALL BE DESIGNED BY A QUALIFIED PROFESSIONAL AND INSTALLED BY A LICENSED IRRIGATOR.

**LANDSCAPE REQUIREMENTS:**

- 1) TOTAL SITE: 139,479 SF - 3,202 ACRES
- 2) TOTAL BUILDING & IMPERVIOUS SURFACES: 66,364 SF (19,320 SF BUILDING + 46,097 SF PAVING = 65,417 SF)
- 3) 22,999 SF OF SITE BETWEEN TOP OF CREEK SLOPE & NORTH PROPERTY LINE - NOT PERMANENT OR IRRIGATED.
- 4) TOTAL LANDSCAPE AREA PROVIDED: 47,194 SF (34% OF SITE)

PARKING LOT TREE REQUIREMENT:  
43 SPACES/10' = 4.3 TREES  
10 PARKING TREES PROVIDED

CITY OF MCKINNEY STREET TREES:  
335.5 FEET/40' = 9 STREET TREES REQ'D.  
9 TREES PROVIDED W/ TREE CREDIT

**PROJECT INFORMATION**

PROJECT: 3103 McDONALD PARTNERSHIP OAK HOLLOW OFFICE WAREHOUSE PARK

OWNER: 3103 McDONALD PARTNERSHIP 110 E. LOUISIANA ST #202A MCKINNEY, TX 75069 DON DAY 214-405-2493

LOCATION: 3103 McDonald - State Hwy 5 CITY OF MCKINNEY - COLLIN COUNTY, TEXAS

DESIGNER: MATTHEW KING E: matting@mkingarchitect.com PH: 469-742-0678

DATE: July 16, 2012 August 13, 2012 City Comments August 21, 2012 City Comments February 27, 2013 site changes March 6, 2013 City Comments

**L-1 LANDSCAPE PLAN**

RECEIVED  
By Kathy Wright at 2:03 pm, Mar 06, 2013