

REVISIONS

PROJECT #: TX1301MK
 DATE: 02/07/2014
 DRAWN BY: JAV
 CHECKED BY: KMK

© 2013 R.L. ENGBRETSON

**FUTURE
 EXPANSION
 BUILDING
 ELEVATIONS**

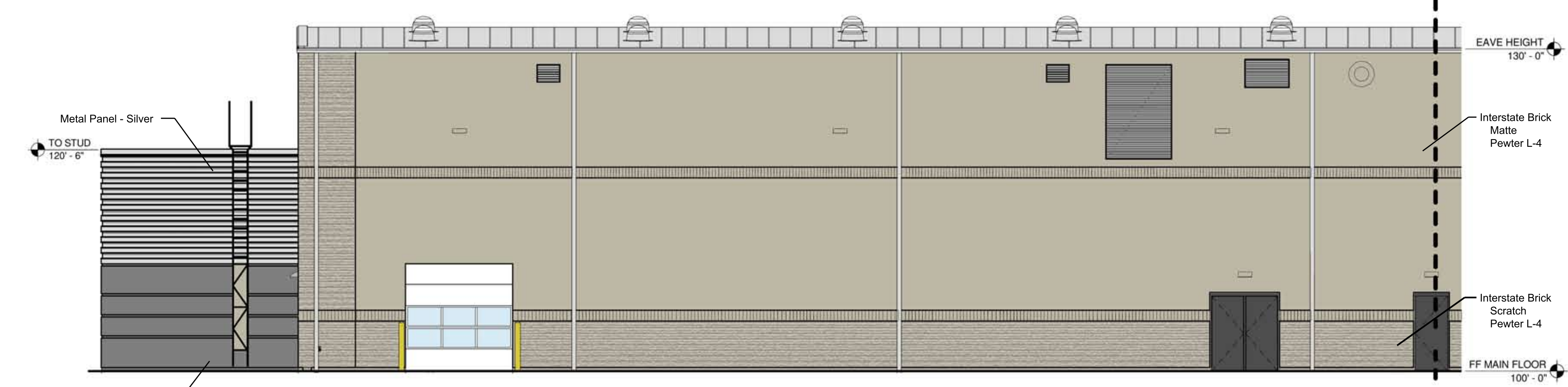
A3.0



WEST ELEVATION MATERIAL TAKEOFFS

BRICK	46%
EXTERIOR INSULATION FINISHING SYSTEM (EIFS)	38%
ARCHITECTURAL METAL PANELS	16%

1 WEST ELEVATION
 A3.0 SCALE: 1/8" = 1'-0"



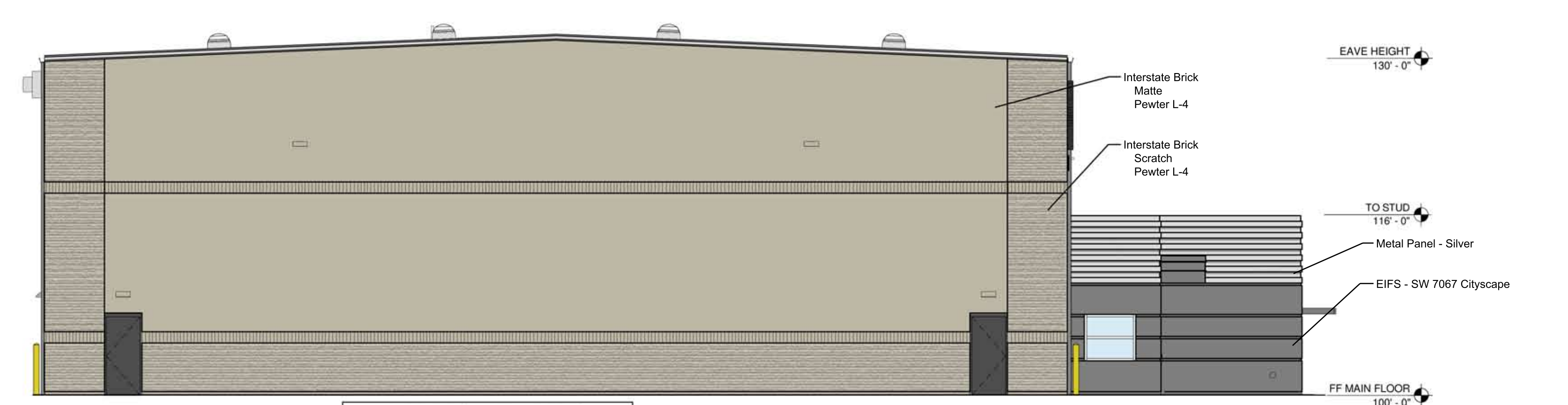
2 PARTIAL SOUTH ELEVATION
 A3.0 SCALE: 1/8" = 1'-0"



SOUTH ELEVATION MATERIAL TAKEOFFS

BRICK	95%
EXTERIOR INSULATION FINISHING SYSTEM (EIFS)	2%
ARCHITECTURAL METAL PANELS	3%

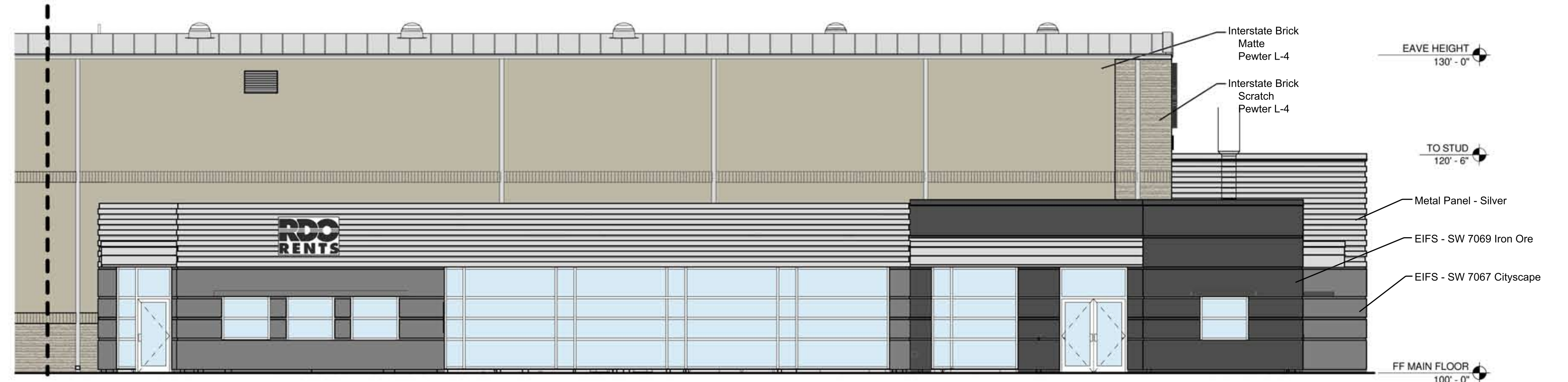
3 PARTIAL SOUTH ELEVATION
 A3.0 SCALE: 1/8" = 1'-0"



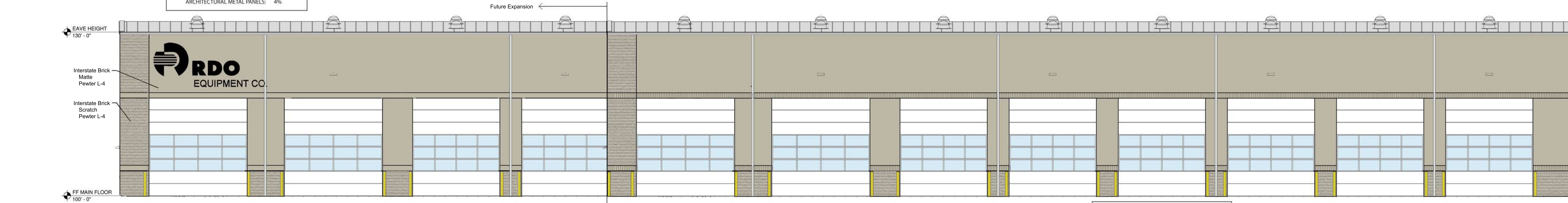
EAST ELEVATION MATERIAL TAKEOFFS

BRICK	89%
EXTERIOR INSULATION FINISHING SYSTEM (EIFS)	7%
ARCHITECTURAL METAL PANELS	4%

4 EAST ELEVATION
 A3.0 SCALE: 1/8" = 1'-0"



5 PARTIAL NORTH ELEVATION
 A3.0 SCALE: 1/8" = 1'-0"



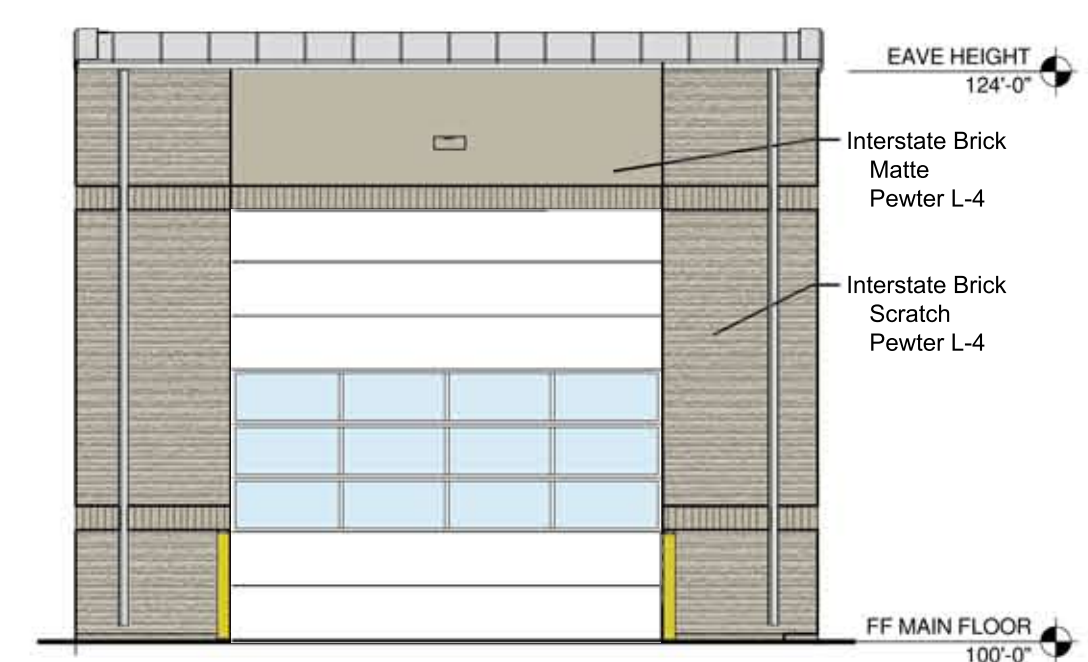
NORTH ELEVATION MATERIAL TAKEOFFS

BRICK	82%
EXTERIOR INSULATION FINISHING SYSTEM (EIFS)	10%
ARCHITECTURAL METAL PANELS	8%

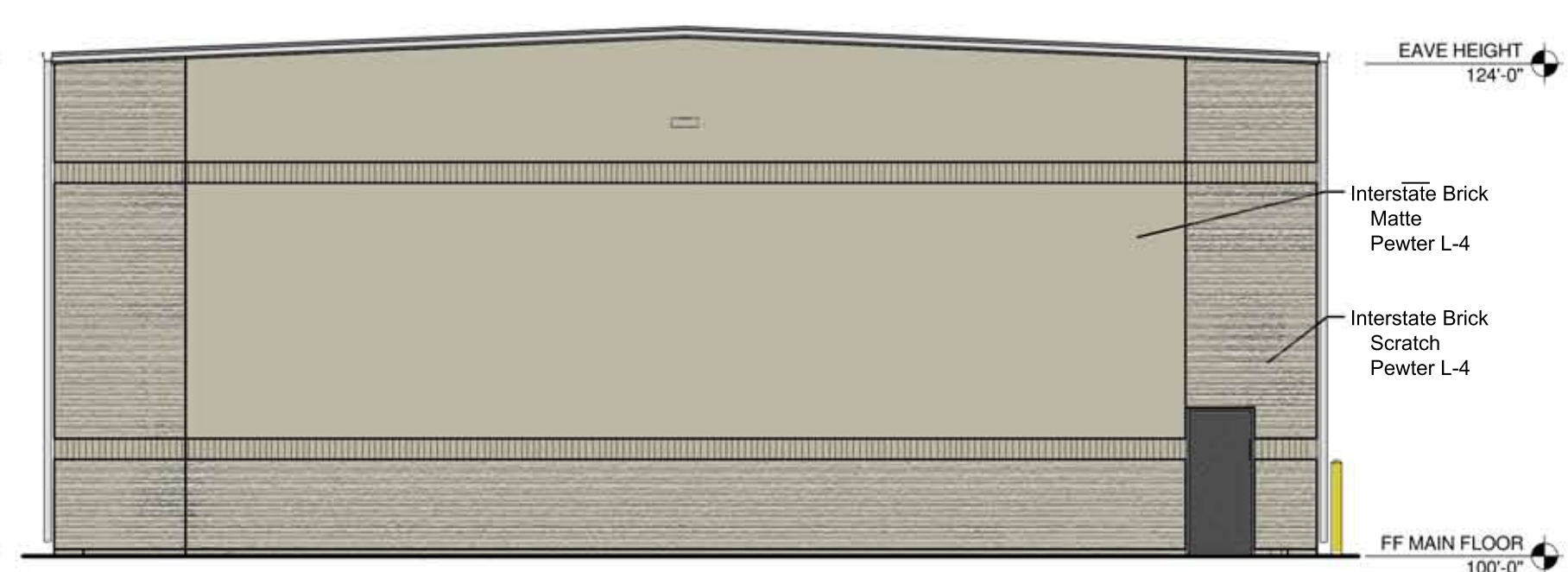
6 PARTIAL NORTH ELEVATION
 A3.0 SCALE: 1/8" = 1'-0"

Exterior Wall Finish Legend

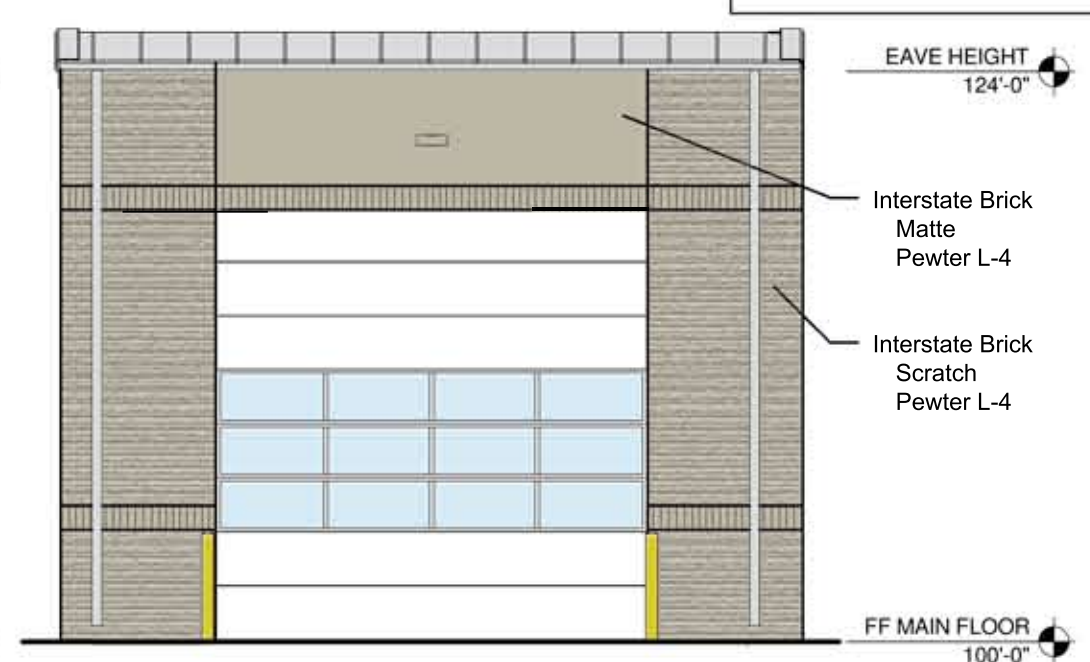
EIFS COLOR #1 SHERWIN WILLIAMS 7069 IRON ORE	INTERSTATE BRICK MATTE PEWTER L-4
EIFS COLOR #2 SHERWIN WILLIAMS 7067 CITYSCAPE	INTERSTATE BRICK SCRATCH PEWTER L-4



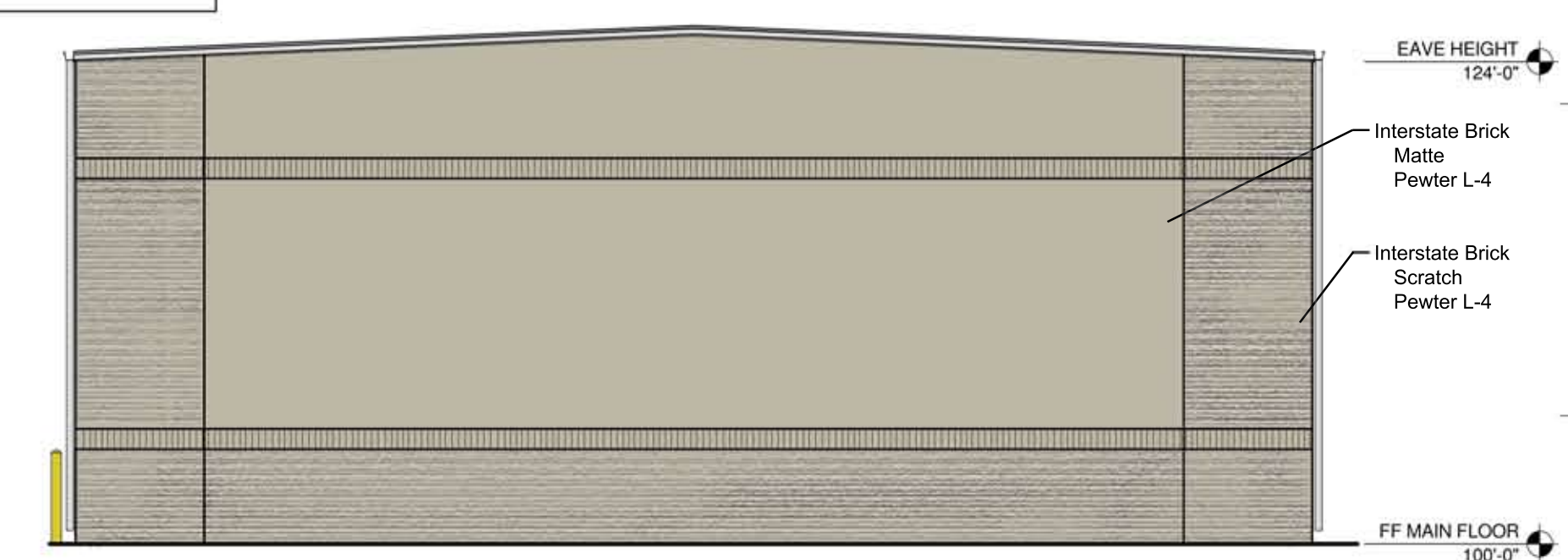
7 WASH BAY EAST ELEVATION
 A3.0 SCALE: 1/8" = 1'-0"



8 WASH BAY NORTH ELEVATION
 A3.0 SCALE: 1/8" = 1'-0"



9 WASH BAY WEST ELEVATION
 A3.0 SCALE: 1/8" = 1'-0"



10 WASH BAY SOUTH ELEVATION
 A3.0 SCALE: 1/8" = 1'-0"