



# Special Event Permit Update

Amy Rosenthal  
Director, MPAC & McKinney Main Street

# Background:

- March 4, 2018 – recover costs, fixed routes, don't differentiate, set limits
- September 17, 2018 – proposal to increase application fee, implement trail fee, restricted use streets, designated routes



# September 2018 Recommendations - Council Support for:

- Permit application fee increase from \$50 to \$100
- ‘Restricted Use’ Streets



# **‘Restricted Use’ Streets**

**(Due to traffic volumes and speed)**

US 380 (University)  
US 75 / US 75 Frontage Roads  
FM 2478 (Custer)  
SH 5 (McDonald)  
Airport Dr  
Industrial Blvd  
FM 546 (Harry McKillop)  
SH 121 / SH 121 Frontage Roads  
Spur 399 / Spur 399 Frontage Roads  
Eldorado Pkwy between Medical Center Dr & Hardin Blvd



# Proposed Trail Fees:

- \$500 site restoration fee for 5k
- \$1,000 site restoration fee for 10k
- \$1,500 site restoration fee for half marathon



# Trail Fees Considerations:

- Help manage requests – all trail requests file Special Event Permit application
- Assist with scheduling
- Revenues applied to trail maintenance & clean-up
- Flat fee as opposed to per participant
- Received feedback (attached) to proposed trail fees
- Must coordinate with MISD parking



- **Move forward with proposed Trail Fees?**
- **Modify proposed Trail Fees?**

# Routes on NON 'RESTRICTED USE' STREETS

## Preferred Routes & Independent Routes





# *Definition*

## *“Preferred Routes”*

- Routes with minimal impact
- City partially recover costs for devices & labor
- City costs are discounted rates based on private vendor quotes & labor rate history

# *Definition*

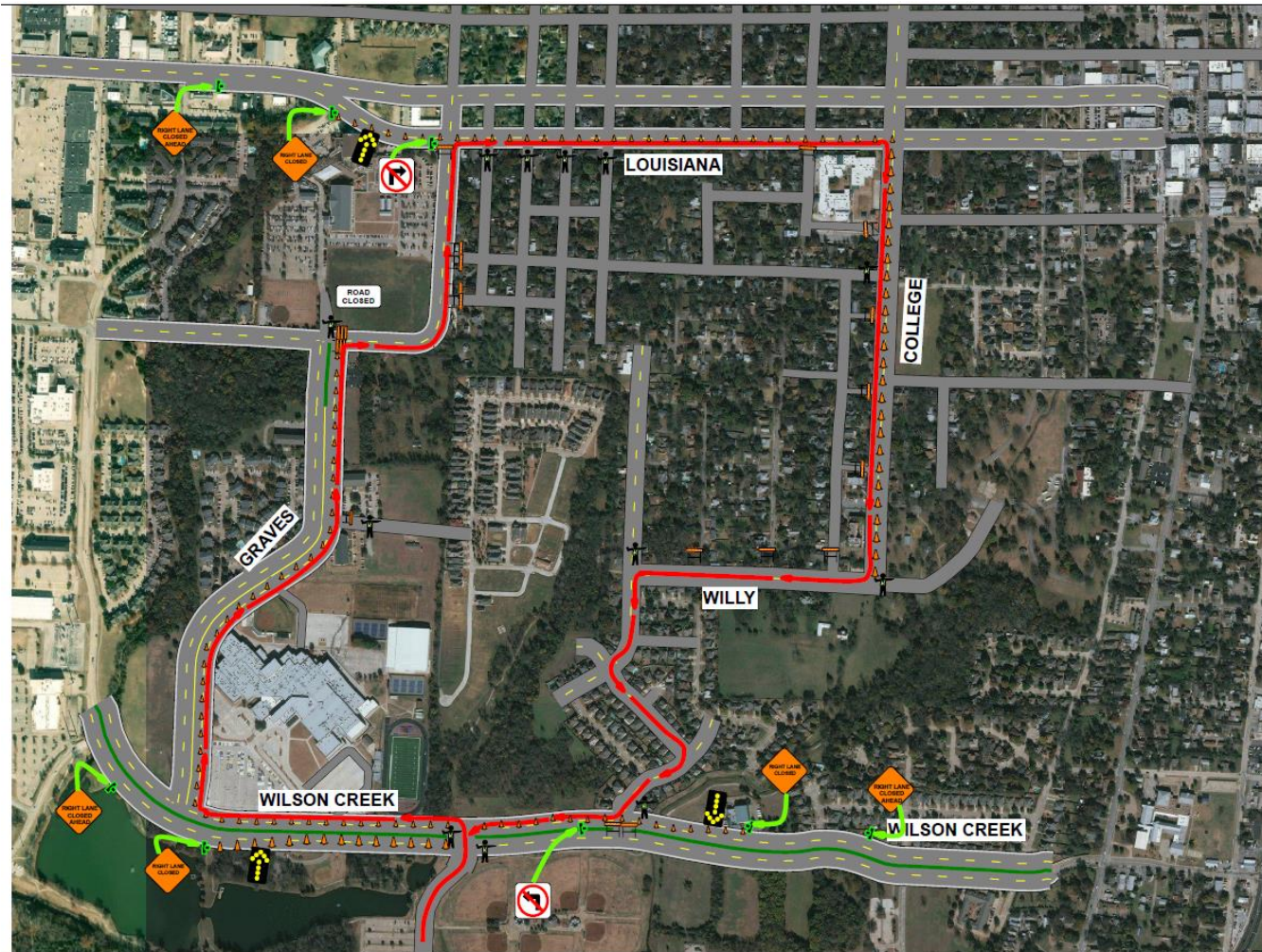
## *“Independent Routes”*

- Event organizer selected
- Must avoid ‘off-limits’ streets
- Organizer responsible for costs of privately secured traffic control devices & personnel

# 5K - Preferred Route

- Travels 'Historic McKinney' streets
- City Discounted Device Rental: \$1,200
- City Discounted Labor Reimbursements: \$1,000
- **Total = \$2,200 + \$100 application fee**





# 5K - Preferred Route



# 5K - Independent Routes

- Must avoid 'off-limit' streets
- Organizer responsible for costs of privately secured traffic control devices & personnel
- 5K's impacted by new structure:  
Believe Run, Tupps (St Patrick's, Monster Dash, Labor Day), Smiles Run



# 5K - Options

Option 1: Select Trail - \$500

Option 2: Select 'Preferred Route' - \$2,200

Option 3: Select 'Independent Route'  
Event Organizer assumes cost

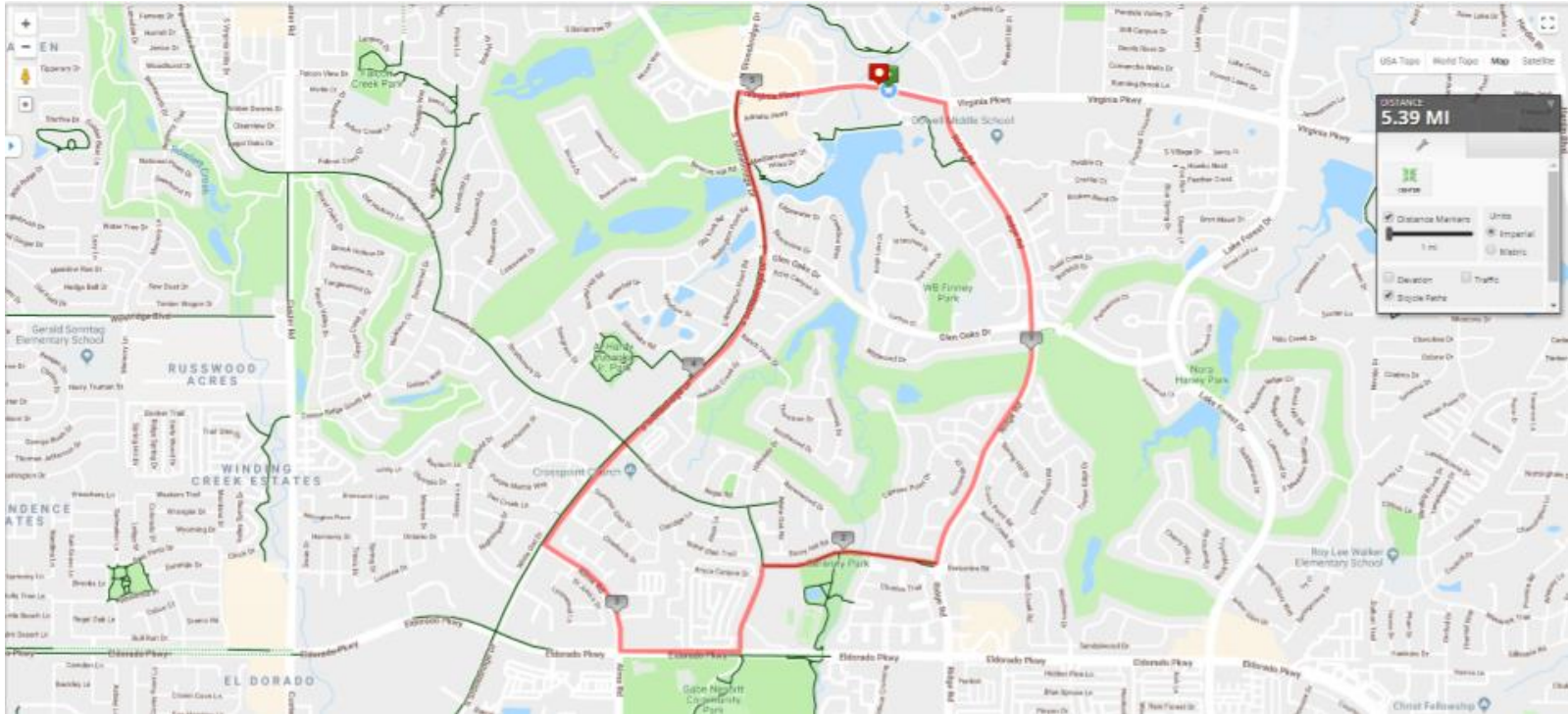


# Triathlon – Preferred Route

- Travels streets in Stonebridge Ranch
- Must be approved by SBR HOA
- SBR Rental Fees
- City Discounted Device Rental: \$1,750
- City Discounted Labor Reimbursements: \$1,500
- **Total = \$3,250 + \$100 Application Fee (not including SBR Rental)**

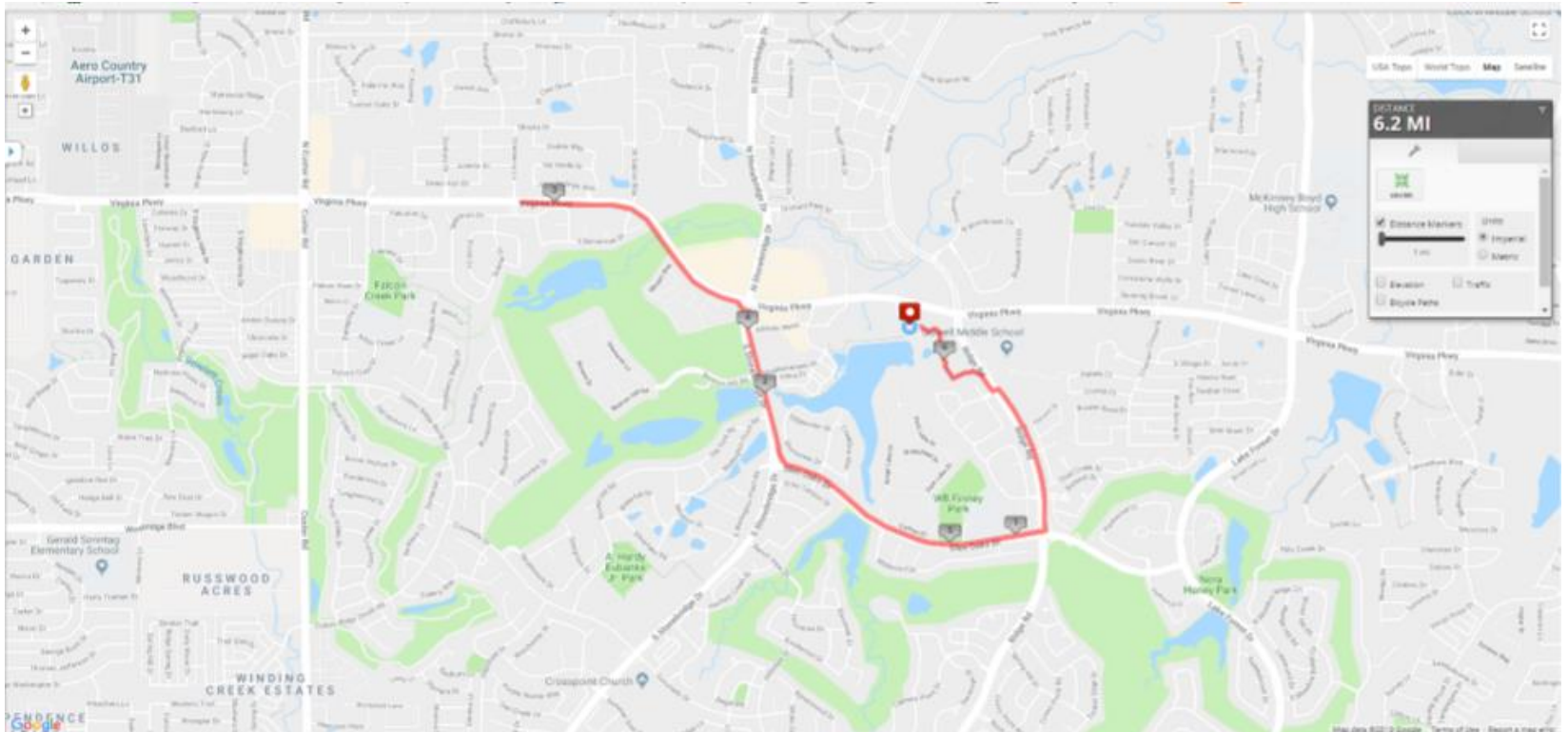


# Triathlon – Bike Map





# Triathlon – Run Map



# Triathlon – Considerations

- Must include aquatic component
- Limited aquatic options
  - McKinney HS
  - Craig Ranch Fitness
  - Stonebridge Lake
  - APEX
- Current - 5 triathlons per year – 2 at Craig Ranch, 2 SBR, 1 Historic McKinney



# Triathlon – Craig Ranch Fitness

- September - Council asks about Craig Ranch
- Prior routes included Custer
- Custer 'off-limits'
- Proposed new route submitted from CR
- Concerns about streets accommodating triathlon activities – one lane & on-street parking



# Triathlon – APEX Centre

- Street use surrounding facility can accommodate run/cycling
- APEX member-based facility, activities disruptive to members
- Concerns about accommodating parking
- Facility policies – 20% of gross



# Triathlon Options:

- Option 1: Select 'Preferred Route' at SBR - \$3,250 plus approval & rental from SBR HOA
- Option 2: Select 'Independent Route'  
Event organizer assumes cost



# Next Steps:

Based on Council discussion,  
Modify Chapter 87  
Bring back for approval

