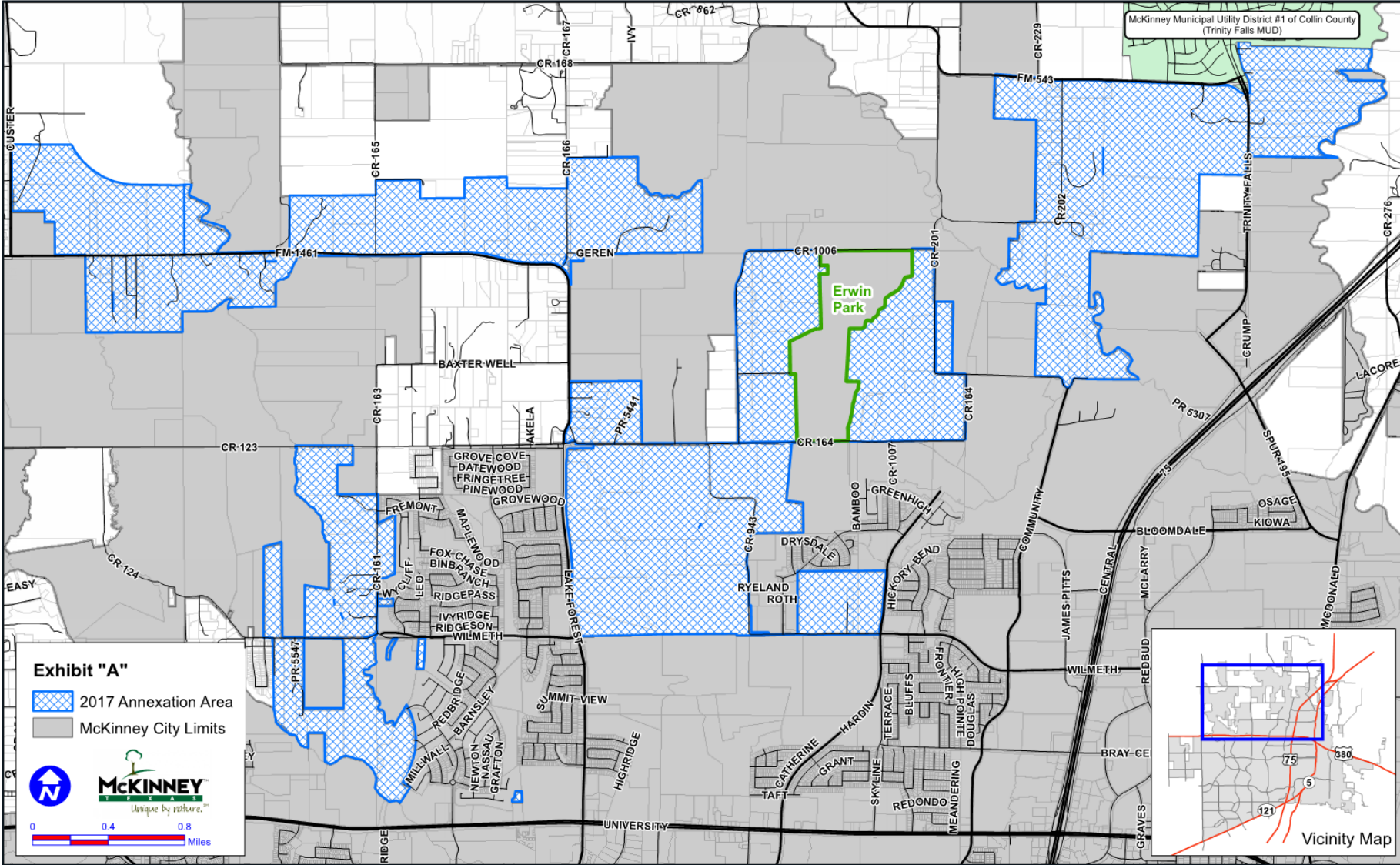


City Initiated Annexation- Public Hearing

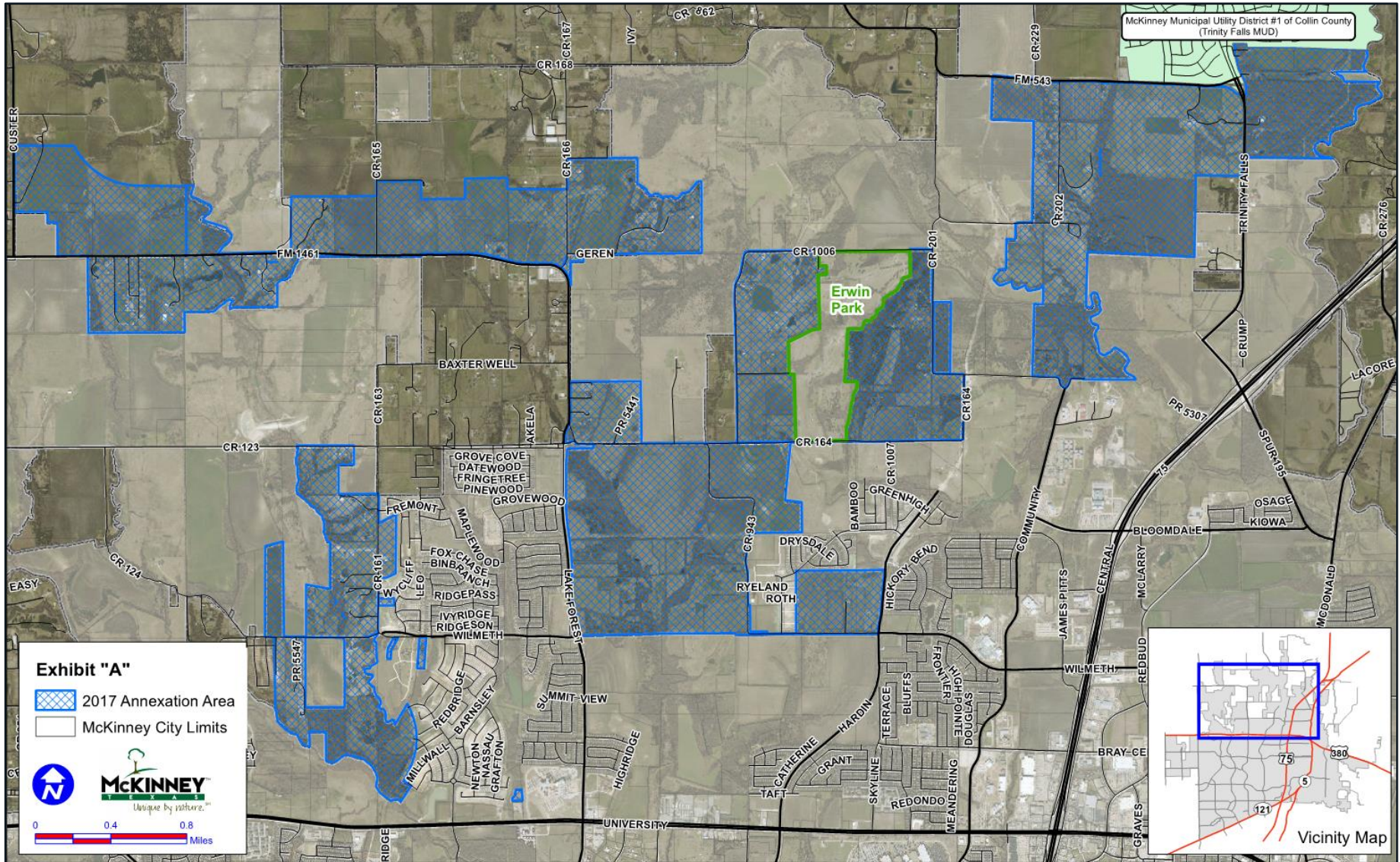
17-249A3



Location Map



Aerial Exhibit



Proposed Annexation: Service Plan

- Police Protection
- Fire Protection and Emergency Medical Services
- Fire Prevention
- Solid Waste Collection
- Water Service
- Sanitary Sewer Service
- Streets
- Parks and Recreation
- Environmental, Health, and Code Enforcement Services
- Planning and Zoning
- Miscellaneous (City owned facility, building, or service)

**the City is required to provide the annexed area with a level of service that is comparable to the level of service available in other parts of the City with topography, land use and population density similar to those contemplated or projected in the annexation area.*

Proposed Annexation: Service Plan

▪ Water and Sanitary Sewer Services

- provided to the area by any of the methods by which we extend the services to any other area of the municipality
- will be provided at a level of service at least equal to current services available in the City, or **equal to the level of services available in other parts of the City with topography, land use and population density** similar to those contemplated or projected in the annexed area
- For new development, the City of McKinney requires developers to construct the necessary infrastructure to meet the needs of the development. This requirement may also include off-site improvements.

▪ Capital Improvements Program

- Upon annexation, the area becomes eligible for Capital Improvement Program consideration.



Informational Exhibit: Agricultural v. Non-Agricultural Properties

