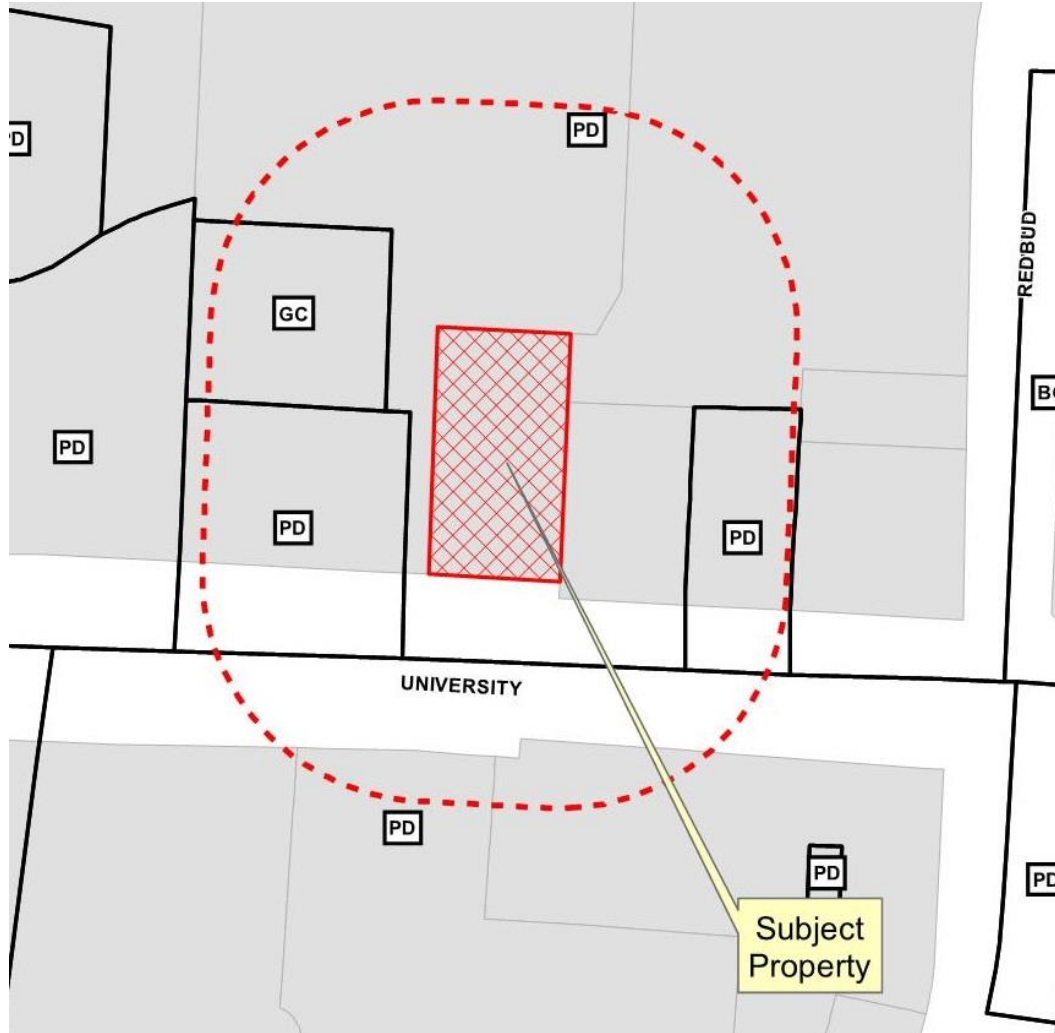


Wendy's Façade Plan Appeal

17-106FR



Location Map



Aerial Exhibit



Proposed Elevations



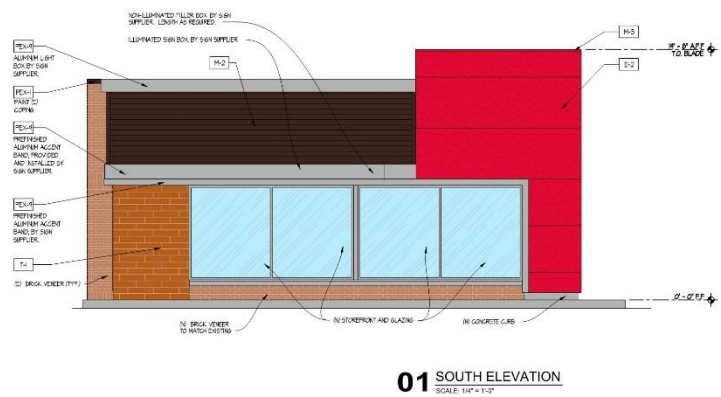
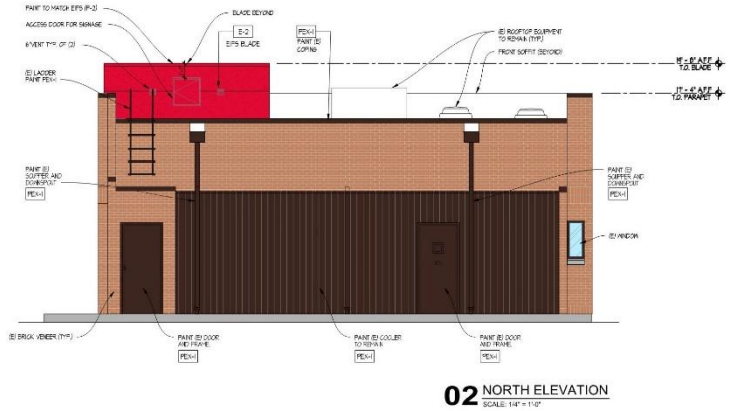
EXTERIOR FINISHES LEGEND

NOTE: REFER TO SHEET #41 FOR SPECIFICATIONS OF EXTERIOR MATERIALS AND FINISHES.

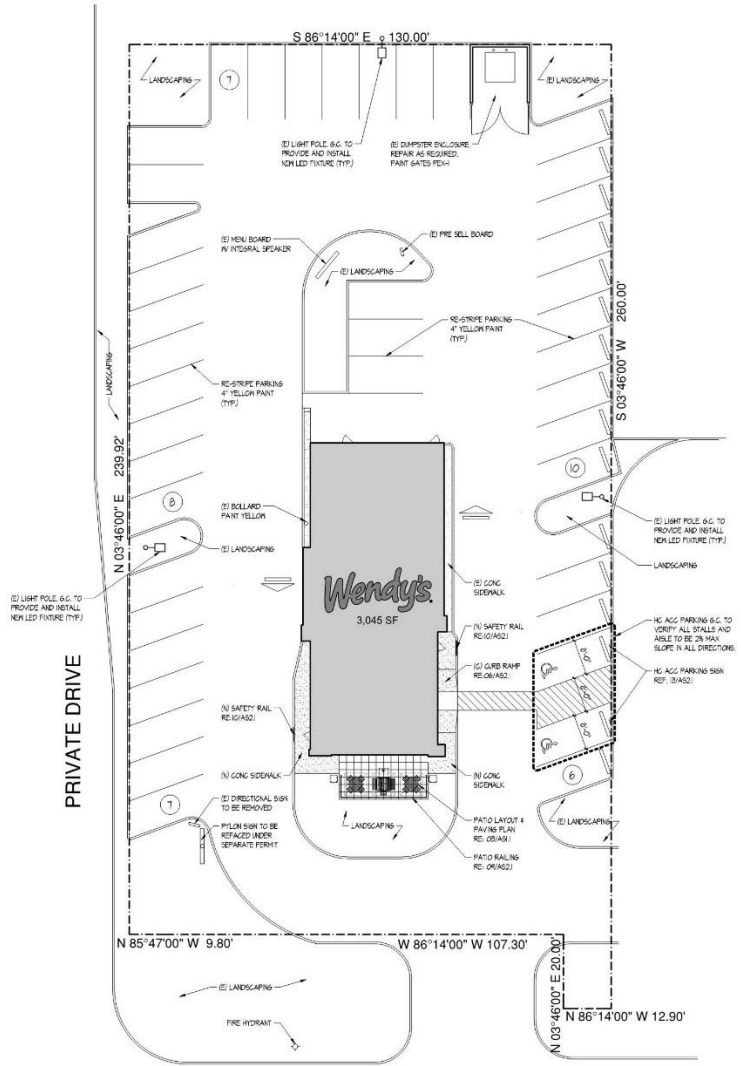
- E-1 EXTERIOR WALLS/CEILING FINISH SYSTEM (COLOR: HENRY'S GRAY)
- E-2 EXTERIOR WALLS/CEILING FINISH SYSTEM (COLOR: HENRY'S RED)
- M-2 CORROBATED METAL PANEL (COLOR: DARK BRONZE)
- M-5 FINISHED GUT (COLOR: BEEK, WATCH STONE)
- PEX-1 PAINT (COLOR: HENRY'S DARK BRONZE)
- PEX-4 CLEAR ANODIZED ALUMINUM FINISH
- T-1 EXTERIOR TILE (COLOR: HENRY'S WOODGRAIN)

EXTERIOR MATERIAL CALCULATIONS

MATERIALS	TOTAL	NORTH FACADE	SOUTH FACADE	EAST FACADE	WEST FACADE					
TOTAL AREA	434 SF	457 SF	100 SF	156 SF	140 SF					
ALUMINUM	645 SF	52 SF	211 SF	145 SF	5 SF					
EXTERIOR WALLS/CEILING FINISH SYSTEM (EXCLUSIVE OF WINDOW DOORS & SIGN)	3504 SF	100 %	605 SF	150 %	423 SF	100 %	145 SF	100 %	1283 SF	100 %
BRICK	3184 SF	62 %	280 SF	41 %	11 SF	17 %	450 SF	78 %	550 SF	100 %
METAL PANEL	271 SF	25 %	261 SF	44 %	32 SF	31 %	218 SF	17 %	286 SF	23 %
EPDS HENRY'S RED	346 SF	1 %	15 SF	4 %	146 SF	34 %	142 SF	5 %	103 SF	4 %
CREAMIC TILE	58 SF	3 %	0 SF	0 %	54 SF	13 %	2 SF	0 %	4 SF	2 %
MATERIAL TOTAL	8504 SF	100 %	608 SF	100 %	423 SF	100 %	145 SF	100 %	1283 SF	100 %



Proposed Site Plan



U.S. HWY 380 (UNIVERSITY DRIVE)

TOTAL PARKING: 38



