

**LANDSCAPE GENERAL NOTES:**

1. THE CONTRACTOR SHALL VERIFY WATER RESTRICTIONS WITHIN THE CITY OF MCKINNEY AT TIME OF PLANTING. SHOULD WATER RESTRICTIONS NOT ALLOW HYDRO-MULCH, HYDRO-SEEDING, OR SPRIGGING (STAGE 3 AND STAGE 4 WATER RESTRICTIONS), AN APPROVED ALTERNATIVE FOR GRASSING SHALL BE INSTALLED.

© 2016 CONDUIT ARCHITECTURE + DESIGN, LLC. THE DRAWINGS AND ALL INFORMATION HEREIN IS THE EXCLUSIVE PROPERTY OF CONDUIT ARCHITECTURE + DESIGN, LLC. DESIGN AND IS NOT TO BE COPIED OR USED IN ANY WAY WITHOUT THE EXPRESS WRITTEN CONSENT OF CONDUIT ARCHITECTURE + DESIGN, LLC. ALL DRAWINGS, SPECIFICATIONS, DETAILS, DESCRIPTIONS, AND ARRANGEMENTS APPEARING HEREIN CONSTITUTE THE ORIGINAL AND UNPUBLISHED WORK OF CONDUIT ARCHITECTURE + DESIGN, LLC.

**conduit**  
architecture + design, llc

402 Parker Street  
McKinney, Texas  
t 972.302.9747  
conduitad.com

**DAVID C. BALDWIN**  
INCORPORATED

LANDSCAPE  
ARCHITECTURE  
PLANNING

130 EAST PARK BOULEVARD  
SUITE 100 PLANO, TX 75074

TEL: 972 906-1806  
FAX: 972 906-1806

**McKinney Fire Station No. 9**  
Lake Forest Dr. / Summit View Dr.

| REV. # | DESCRIPTION | DATE |
|--------|-------------|------|
| 1      |             |      |
| 2      |             |      |
| 3      |             |      |
| 4      |             |      |
| 5      |             |      |

PROJECT NUMBER

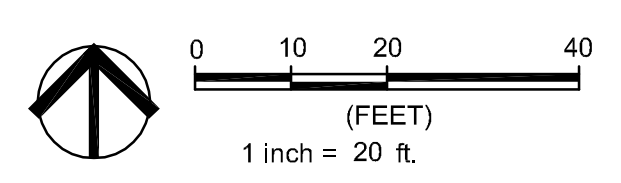
DATE  
04.04.16

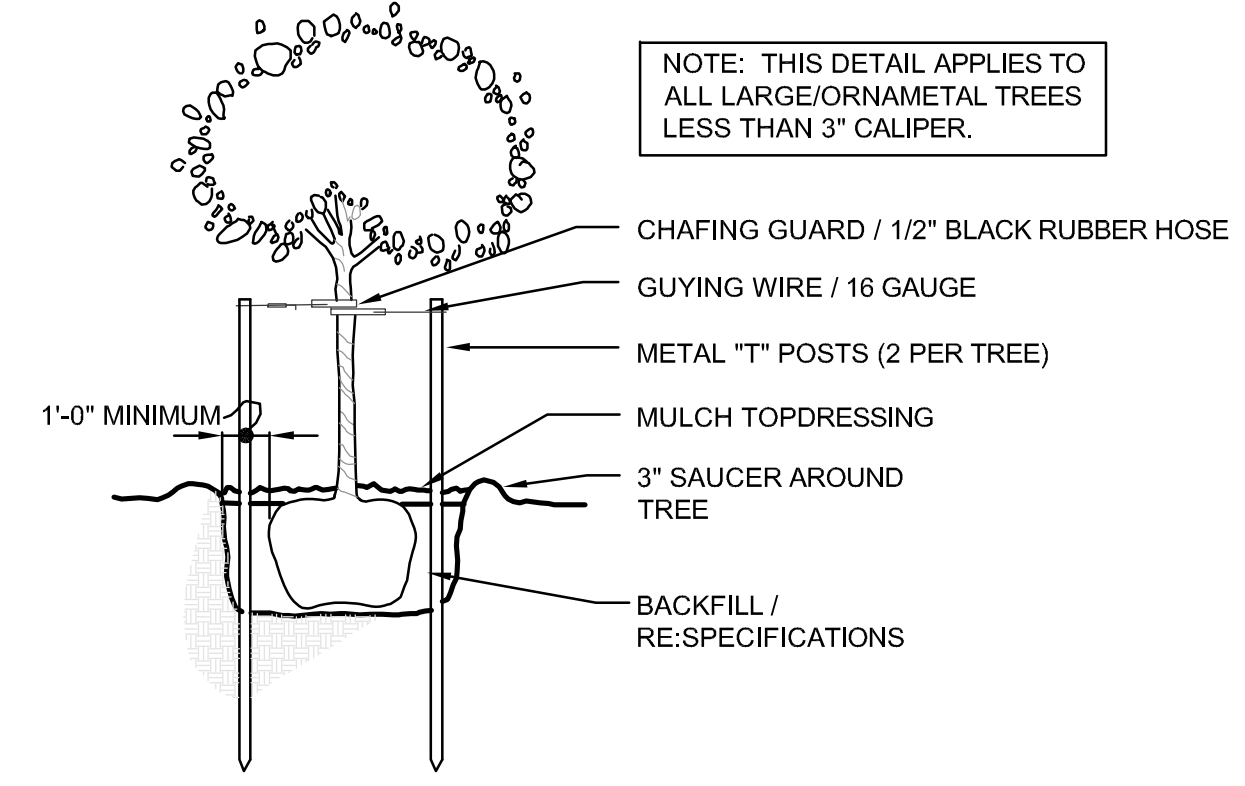
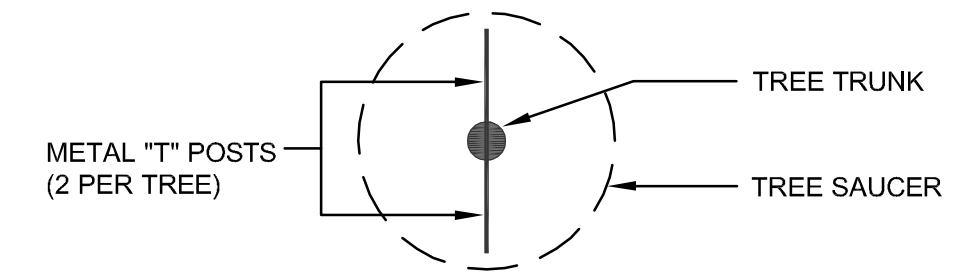
SHEET TITLE

**SITE PLAN**

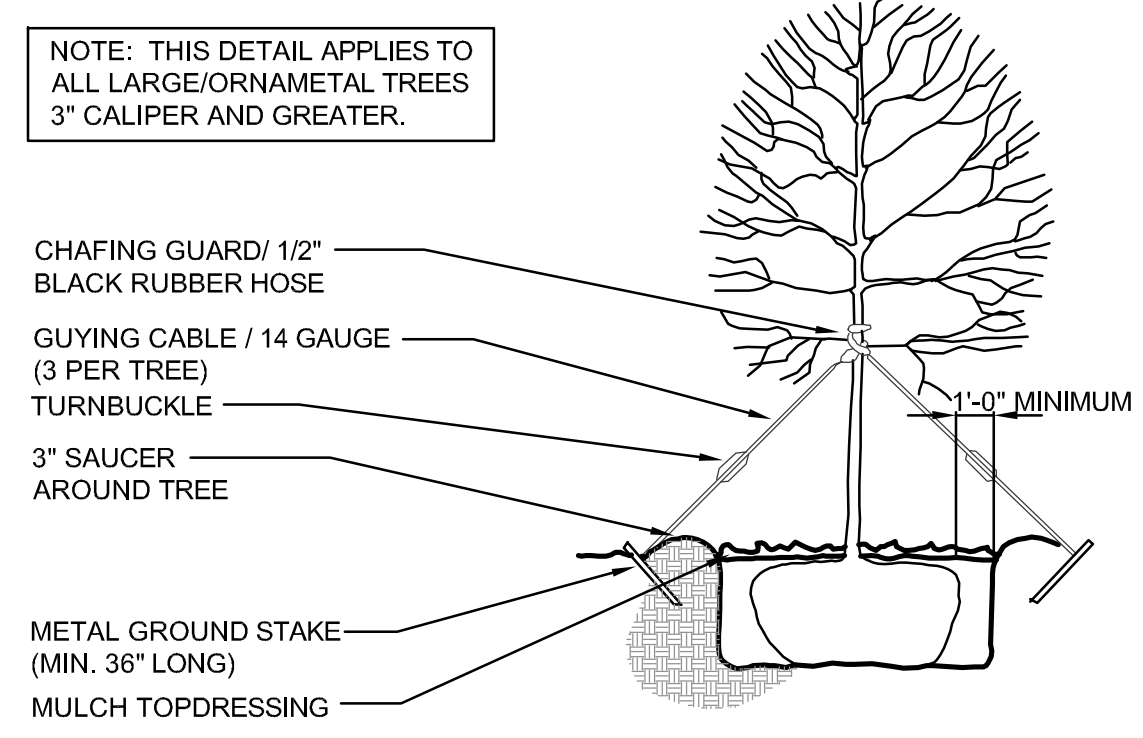
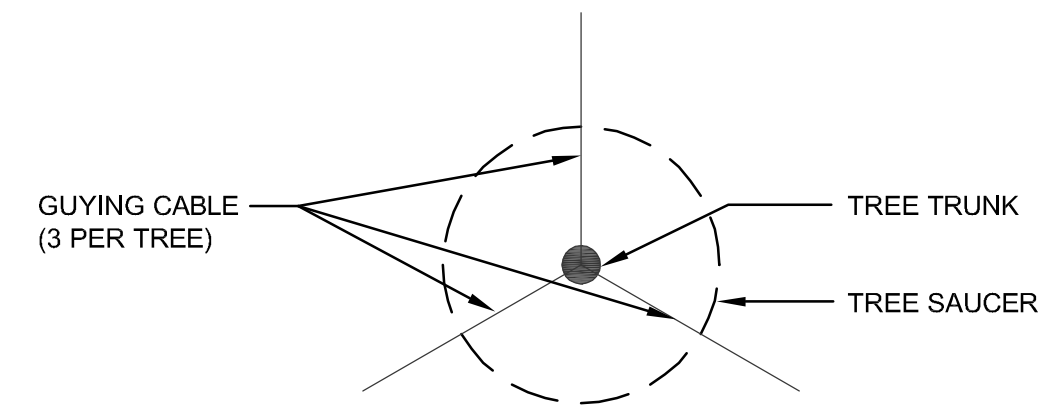
SHEET NUMBER  
**L1.1**

**A LANDSCAPE PLAN**  
SCALE: 1" = 20'-0"  
PLAN VIEW





**B TREE STAKING DETAIL**  
SCALE: N.T.S. SECTION/ELEVATION



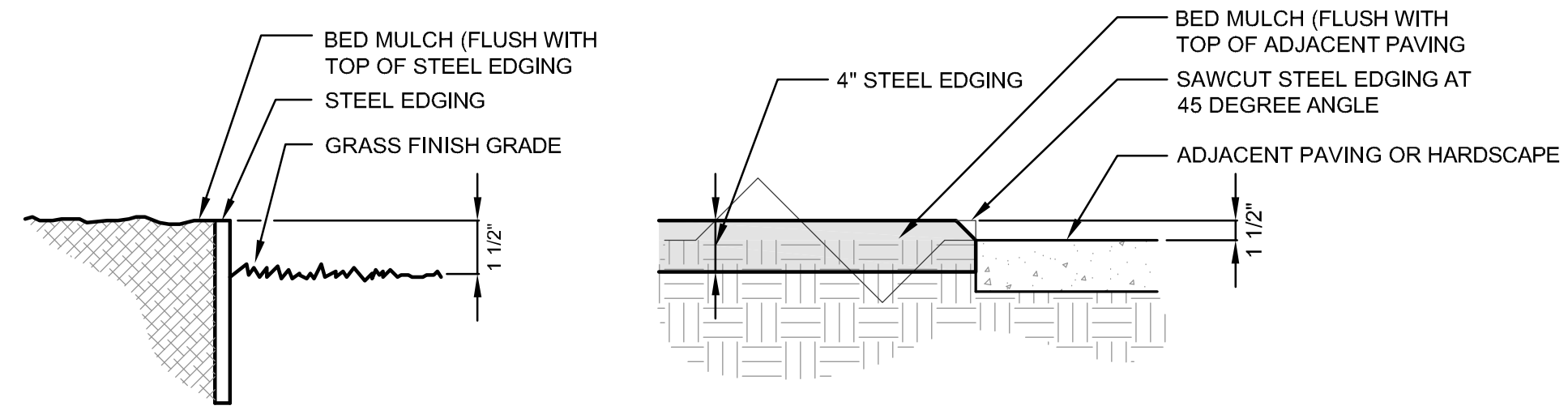
**A TREE GUYING DETAIL**  
SCALE: N.T.S. SECTION/ELEVATION

| KEY | QTY | COMMON NAME             | BOTANICAL NAME                           | SIZE   | REMARKS   |
|-----|-----|-------------------------|--|--|---|
| LO  | 20  | LIVE OAK                | <i>Quercus virginiana</i>                | 100 gallon; minimum 4" caliper x 15' height x 6' spread  | Container-grown; full head; matched. Cherry Lake Tree Farm or approved equal. |
| RO  | 10  | SHUMARD RED OAK         | <i>Quercus shumardii</i>                 | 100 gallon; minimum 4" caliper x 15' height x 6' spread. | Container-grown; full head; matched. Cherry Lake Tree Farm or approved equal. |
| CE  | 11  | CEDAR ELM               | <i>Ulmus crassifolia</i>                 | 100 gallon; minimum 4" caliper x 16' height x 7' spread  | Container-grown; full head; matched.  |
| CM  | 4   | 'MUSKOGEE' CRAPE MYRTLE | <i>Lagerstroemia indica 'Muskogee'</i>   | 30 gallon; minimum 7" height x 3' spread; single-trunk.  | Container grown; full; multi-trunk.   |
| PSH | 7   | 'WARRENS RED' POSSUMHAW | <i>Ilex decidua 'Warrens Red'</i>        | 30 gallon; minimum 7" height x 3' spread.                | Container-grown; full head; multi-trunk; specimen quality.                    |
| NRS | 12  | NELLIE R. STEVENS HOLLY | <i>Ilex 'Nellie R. Stevens'</i>          | 30 gallon; minimum 6' height and 4' spread.              | Container-grown; full-to-ground. Cherry Lake Tree Farm or approved equal.     |
| NPH | 43  | NEEDLE POINT HOLLY      | <i>Ilex cornuta 'Needlepoint'</i>        | 7 gallon; minimum 36" height and 30" spread              | Full-to-ground; plant 36" o.c.  |
| CCA | 49  | 'CANYON CREEK' ABELIA   | <i>Abelia grandiflora 'Canyon Creek'</i> | 5 gallon.  | Full; plant 36" o.c.  |

LANDSCAPE GENERAL NOTES :

- QUANTITIES SHOWN ON PLANT LIST ARE LANDSCAPE ARCHITECT'S ESTIMATE ONLY AND SHOULD BE VERIFIED PRIOR TO BIDDING. CONTRACTOR SHALL BE RESPONSIBLE FOR BIDDING AND PROVIDING QUANTITY OF PLANT REQUIRED AT SPACING DESIGNATED FOR BED SIZES AND CONFIGURATIONS SHOWN ON PLANS REGARDLESS OF QUANTITIES DESIGNATED ON PLANT LIST.
- ALL SIZE REQUIREMENT AND CONTAINER SIZES FOR PLANT MATERIALS SHOWN ON THE PLANT LIST MUST BE MET AS MINIMUM. IF ANY SPECIFIC REQUIREMENT CANNOT BE MET (I.E., IF A 100 GALLON TREE CANNOT MEET THE SPECIFIED CALIPER REQUIREMENT), THE CONTRACTOR SHALL NOTIFY THE LANDSCAPE ARCHITECT PRIOR TO BIDDING. THE CONTAINER SIZE MUST BE MET REGARDLESS WHETHER THE SPECIFIED SIZES CAN BE REACHED WITH A SMALLER SIZE CONTAINER.
- ALL LANDSCAPING WILL BE WATERED BY AN AUTOMATIC UNDERGROUND WATERING SYSTEM.
- THE CONTRACTOR SHALL VERIFY WATER RESTRICTIONS WITHIN THE CITY OF MCKINNEY AT TIME OF PLANTING. SHOULD WATER RESTRICTIONS NOT ALLOW HYDRO-MULCH, HYDRO-SEEDING, OR SPRIGGING (STAGE 3 AND STAGE 4 WATER RESTRICTIONS), AN APPROVED ALTERNATIVE FOR GRASSING SHALL BE INSTALLED.

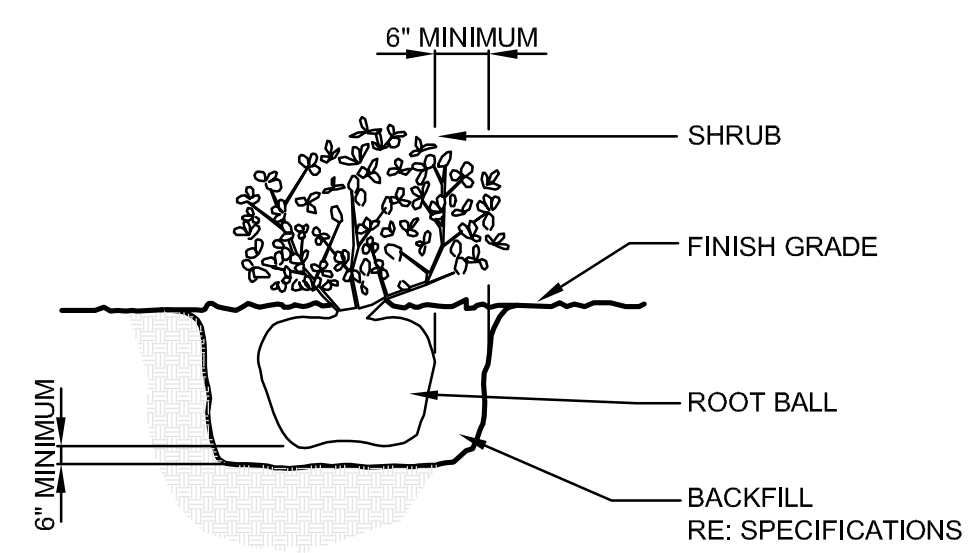
NOTE: STEEL EDGING TO BE LOCATED ALONG ALL LANDSCAPE BEDS ADJACENT TO TURF AREAS. TYPICAL.



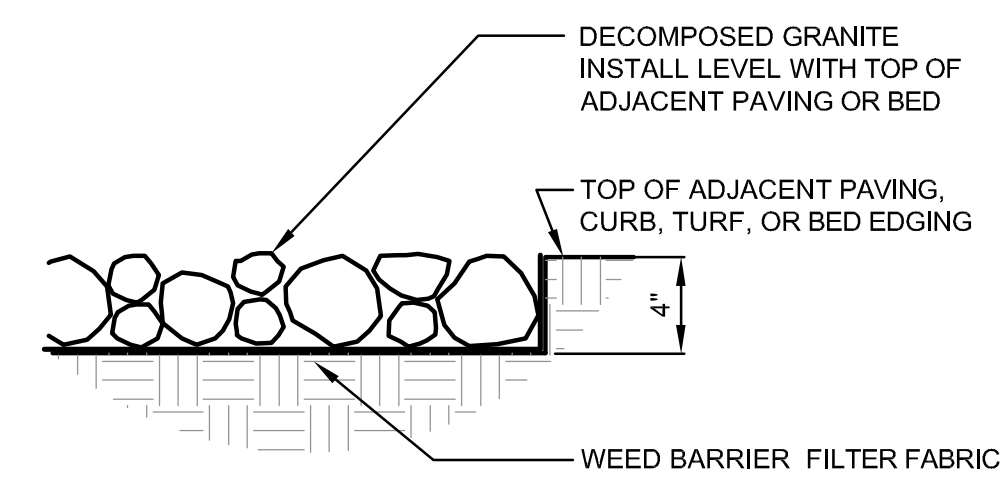
STEEL EDGING SECTION

STEEL EDGING (ADJACENT TO PAVING) SECTION/ELEVATION

**D STEEL EDGING**  
SCALE: N.T.S. SECTION/ELEVATION



**C SHRUB PLANTING DETAIL**  
SCALE: N.T.S. SECTION/ELEVATION



**E DECOMPOSED GRANITE**  
SCALE: N.T.S. SECTION

| REV. # | DESCRIPTION | DATE |
|--------|-------------|------|
| 1      |             |      |
| 2      |             |      |
| 3      |             |      |
| 4      |             |      |
| 5      |             |      |

PROJECT NUMBER  
DATE  
04.04.16  
SHEET TITLE  
LANDSCAPE NOTES & DETAILS

SHEET NUMBER  
**L1.2**