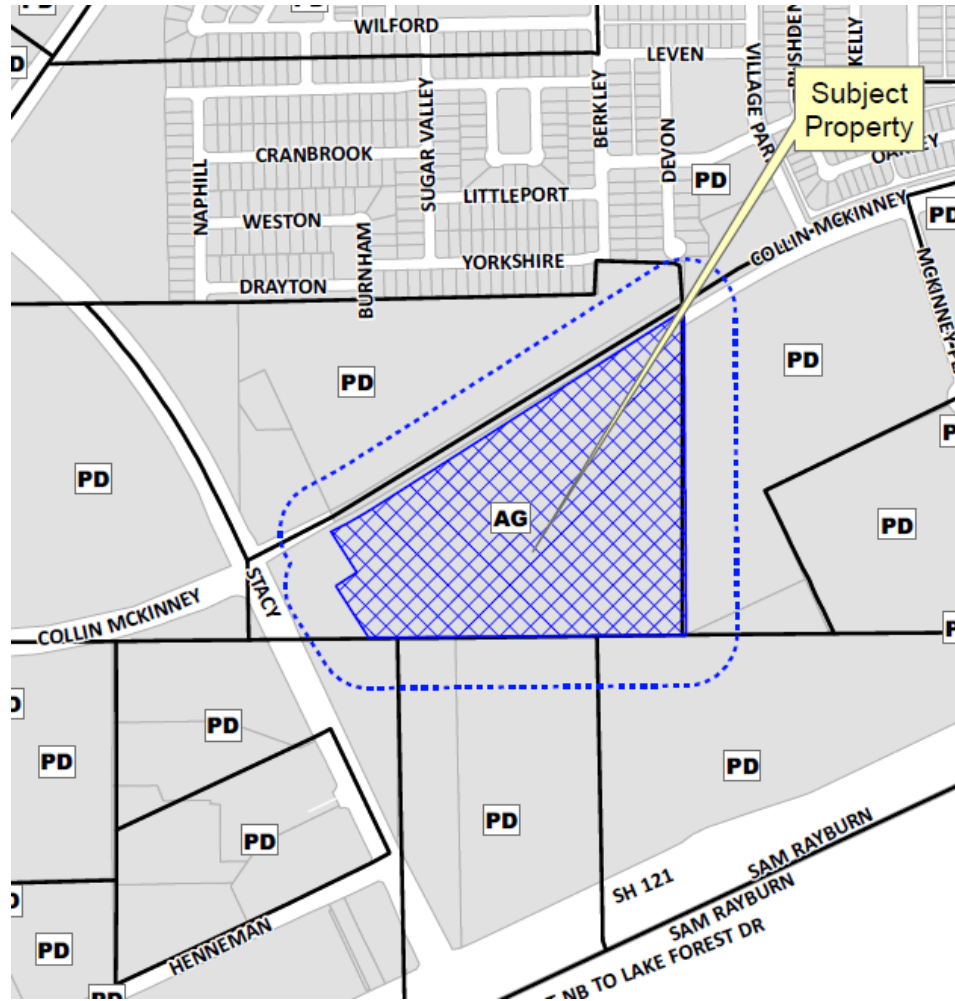


Workman Floyd
Rezone
14-347Z

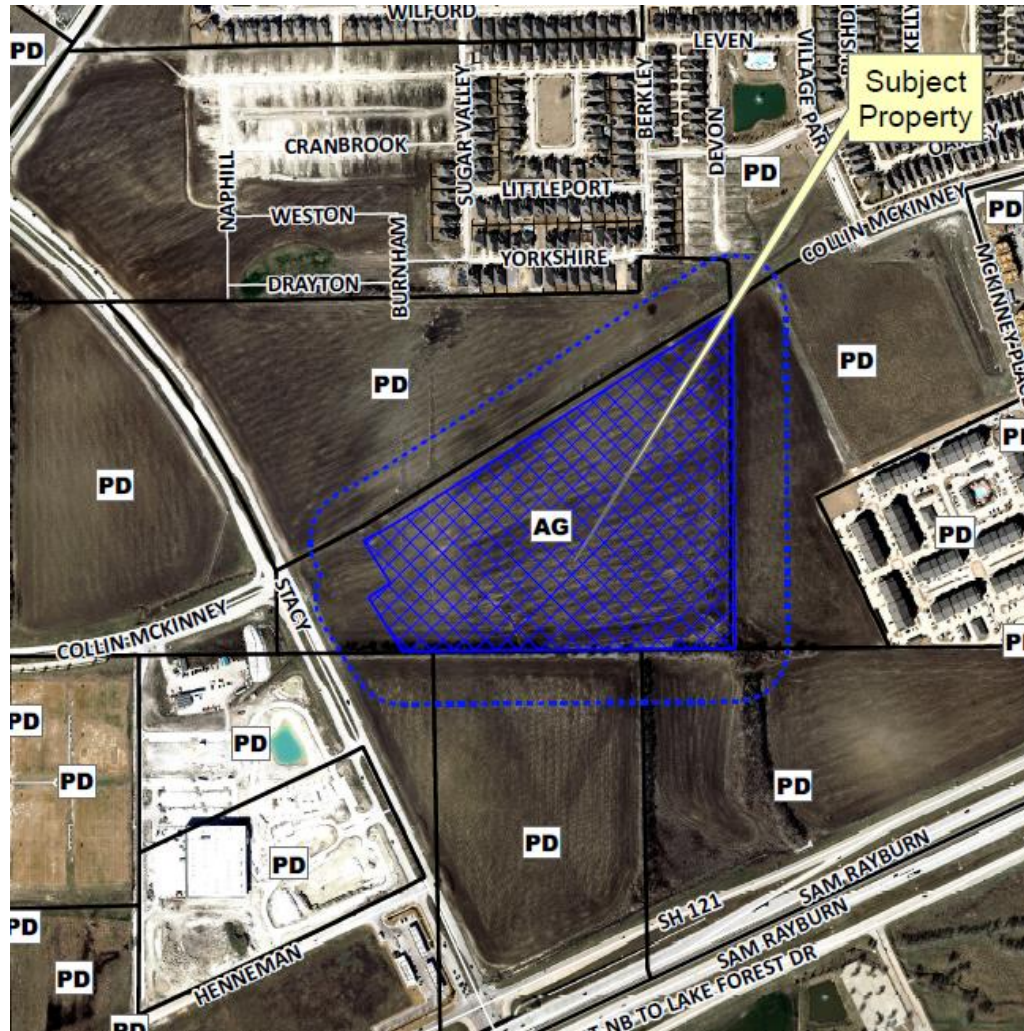


- MONEY MAGAZINE 2014 -

Location Map



Aerial Exhibit



Proposed Zoning Exhibit




Master Planning
Civil Engineering
Land Development
401 N. Tennessee Street
Midway, TN 37050
Tel 404-624-3900
Office: 714-611-3100
Tyler.Sanchez@SanchezAssociates.com

LAND PLAN
33.26 ACRE SEC STACY ROAD AND
FUTURE COLLIN MCKINNEY PARKWAY
152 SF DETACHED LOTS (50' x 110')