

VICINITY MAP
NTS

- LEGEND**
- Heavy Duty Pavement
 - Light Duty Pavement
 - Proposed Sidewalk
 - Ex. Concrete
 - Proposed Retaining Wall
 - Proposed Wheel Stop Typical
 - Existing Fire Hydrant
 - Proposed Fire Hydrant
 - Barrier Free Ramp

Lot 1, Block S
Cooper Living Center Addition
Cabinet 2009, Page 402
(PRCCT)

ENGINEER:
Cross Engineering Consultants, Inc.
131 S. Tennessee St.
McKinney, Texas 75069
Phone (972) 562-4409
Fax (972) 562-4471
Contact: Jonathan D. Hake, P.E.

ARCHITECT:
Schaumburg Architects
817 W. Dagget Avenue
Ft. Worth, Texas 76104
Phone (817) 336-7077
Fax (817) 336-7776
Contact: Gordon McKenzie

SURVEYOR:
A. J. Bedford Group, Inc.
301 N. Alamo Road
Rockwall, Texas 75087
Phone (972) 722-0225
Contact: A.J. Bedford

NOTE: THIS IS NOT A CONSTRUCTION DOCUMENT.
THIS DOCUMENT IS FOR CONCEPTUAL PLANNING PURPOSES ONLY.

BENCHMARK:
BM #1
City of McKinney Monument No. 36 located at Hardin & McKinney Ranch Road on the median at the southeast end of curb. CAP on curb. Post. Elevation = 705.42
BM #2
PK nail set at the nose of the north median located at the intersection of Collin-McKinney Parkway and Alma Road. Elevation = 721.34
BM #3
Southwest corner of inlet located on the north side of Collin-McKinney Parkway, 81'± east of Aerobic Way. Elevation = 693.31

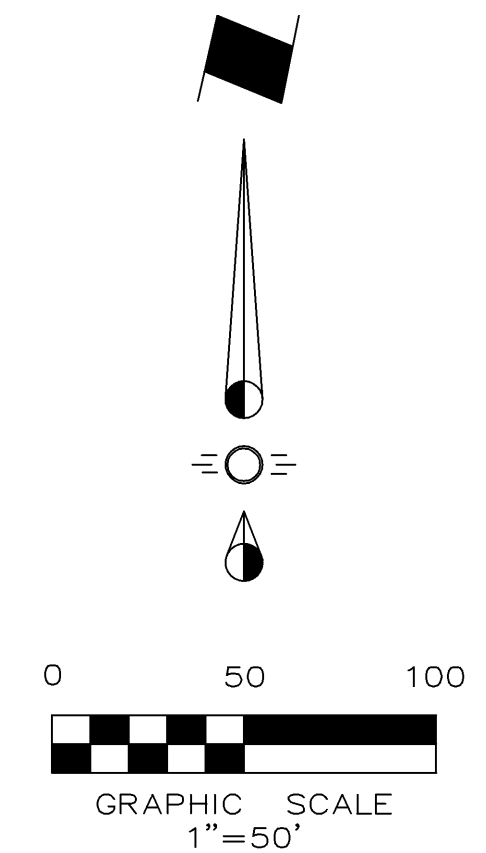
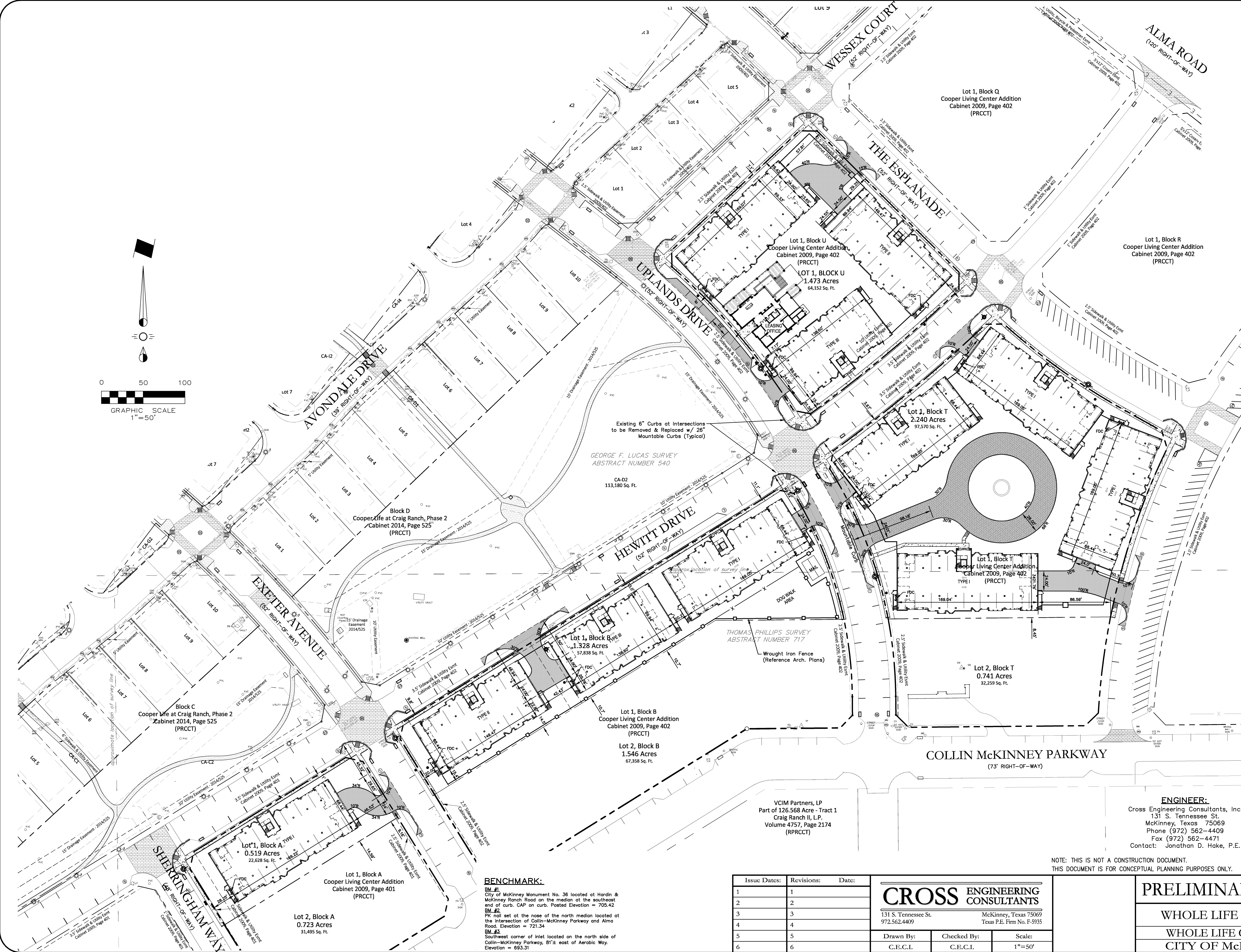
Issue Dates:	Revisions:	Date:
1	1	
2	2	
3	3	
4	4	
5	5	
6	6	

CROSS ENGINEERING CONSULTANTS
131 S. Tennessee St. McKinney, Texas 75069
972.562.4409 Texas P.E. Firm No. F-5935

Drawn By: C.E.C.I. Checked By: C.E.C.I. Scale: 1"=50'

PRELIMINARY EXHIBIT 2A
WHOLE LIFE AT CRAIG RANCH
WHOLE LIFE CRAIG RANCH, LLC
CITY OF MCKINNEY, TEXAS

Sheet No.
2A
Project No.
14081



WHOLE LIFE AT CRAIG RANCH EXHIBIT 2A