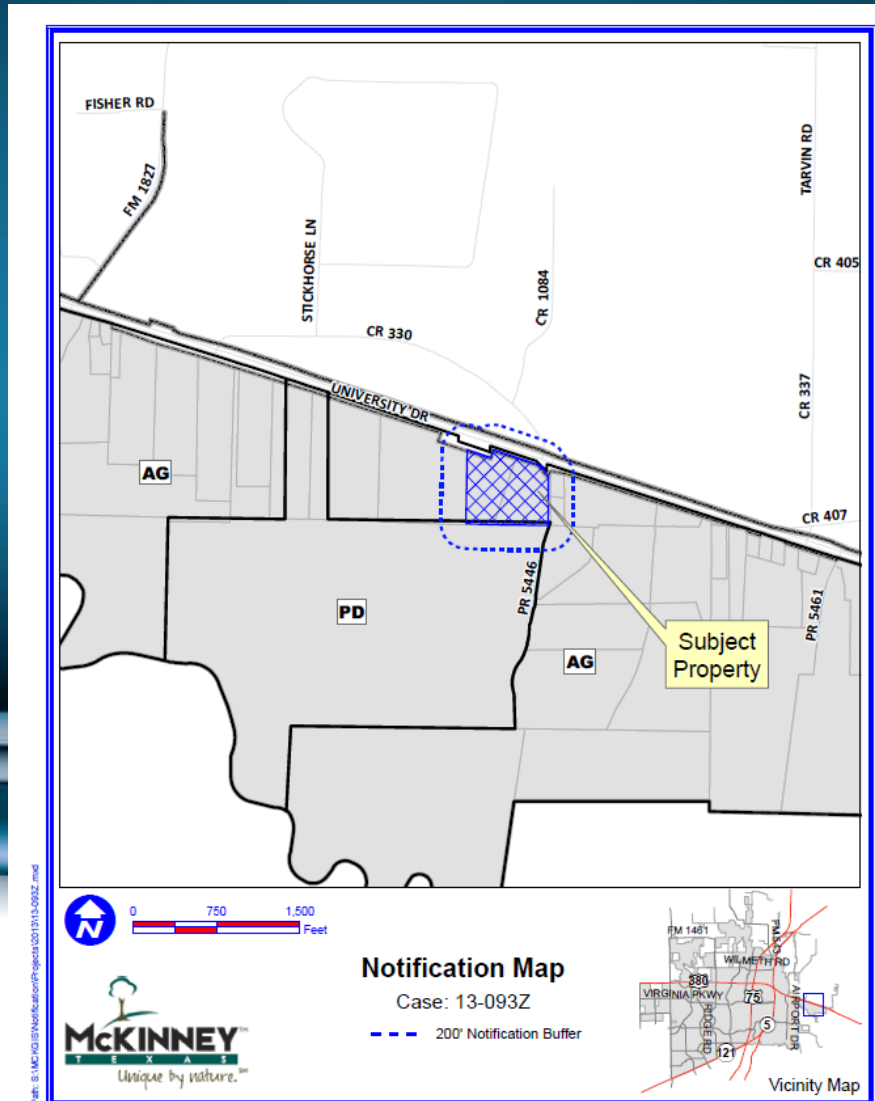


Case No. 13-093Z

Located Approximately 4,200 Feet East of FM 1827
(New Hope Road) and on the South Side of U.S.
Highway 380 (University Drive)



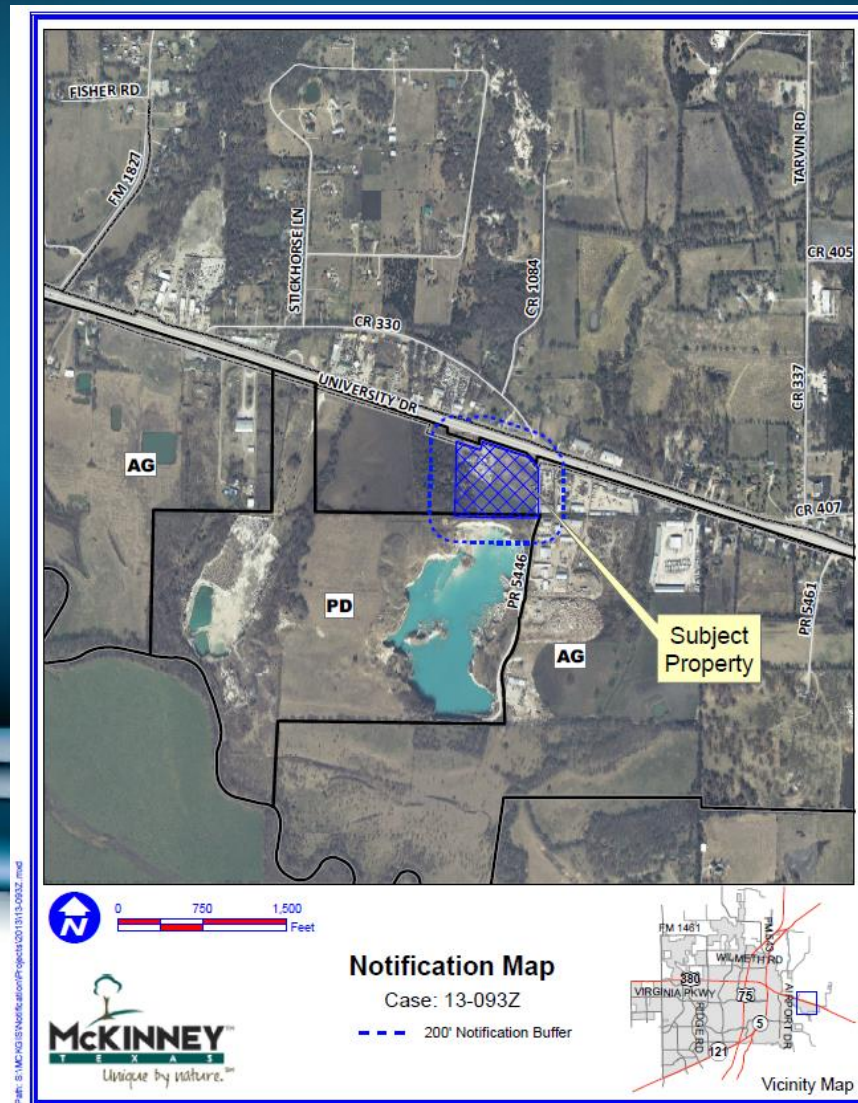
Location Map



Path: B:\MCKINNEY\Notification\Projects\130113-093Z.mxd

DISCLAIMER: This map and information contained in it were developed exclusively for use by the City of McKinney. Any use or reliance on this map by anyone else is at that party's risk and without liability to the City of McKinney, its officials or employees for any discrepancies, errors, or variances which may exist.

Aerial Exhibit



DISCLAIMER: This map and information contained in it were developed exclusively for use by the City of McKinney. Any use or reliance on this map by anyone else is at that party's risk and without liability to the City of McKinney, its officials or employees for any discrepancies, errors, or variances which may exist.

STAFF RECOMMENDATION:

Staff recommends approval of the rezoning request.

