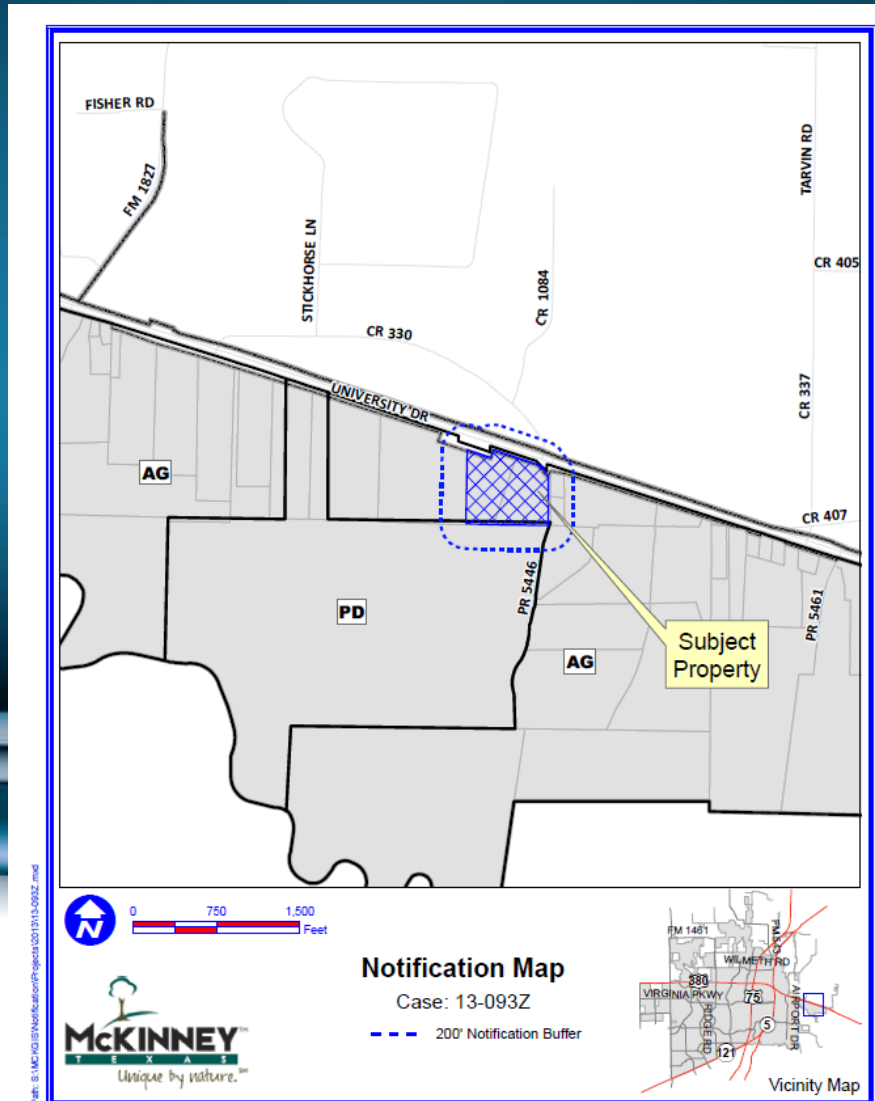


Case No. 13-093Z

Located Approximately 4,200 Feet East of FM 1827
(New Hope Road) and on the South Side of U.S.
Highway 380 (University Drive)



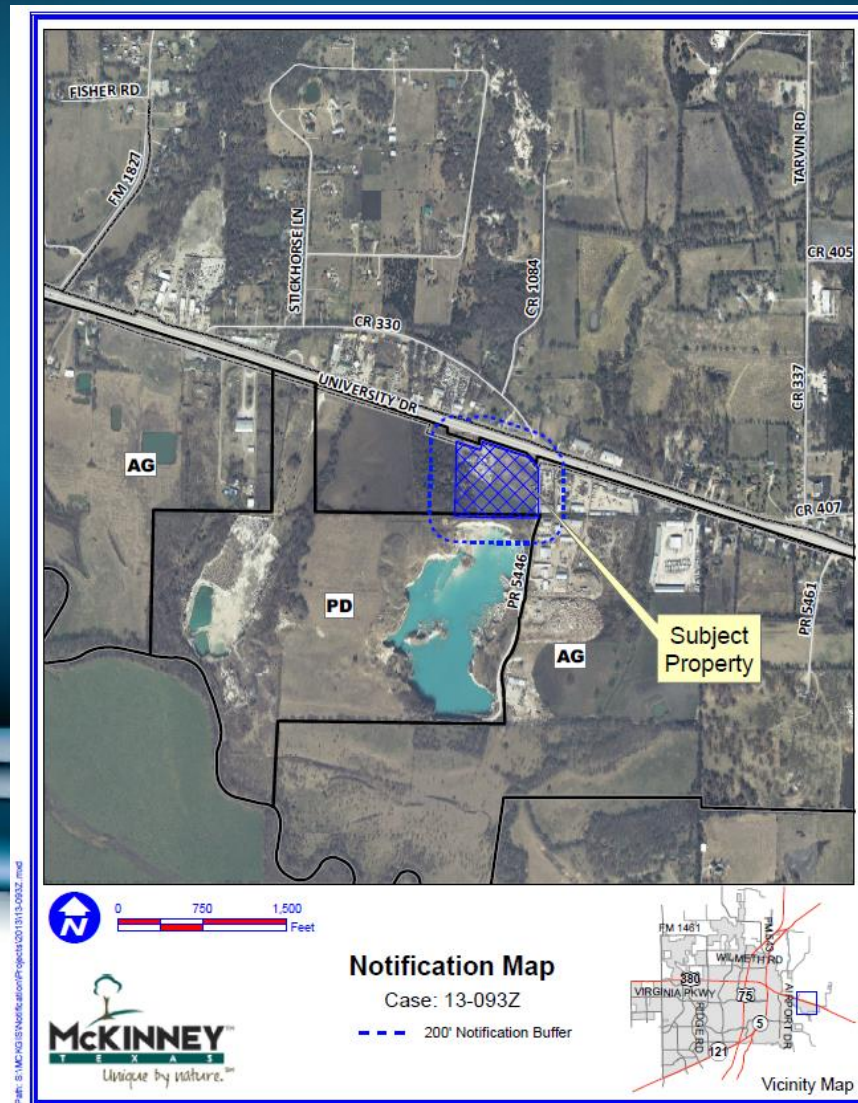
Location Map



Path: B:\MCKINNEY\Notification\Projects\131113-093Z.mxd

DISCLAIMER: This map and information contained in it were developed exclusively for use by the City of McKinney. Any use or reliance on this map by anyone else is at that party's risk and without liability to the City of McKinney, its officials or employees for any discrepancies, errors, or variances which may exist.

Aerial Exhibit



Path: S:\MCH\GIS\Notification\Project\201313-093Z.mxd



Notification Map

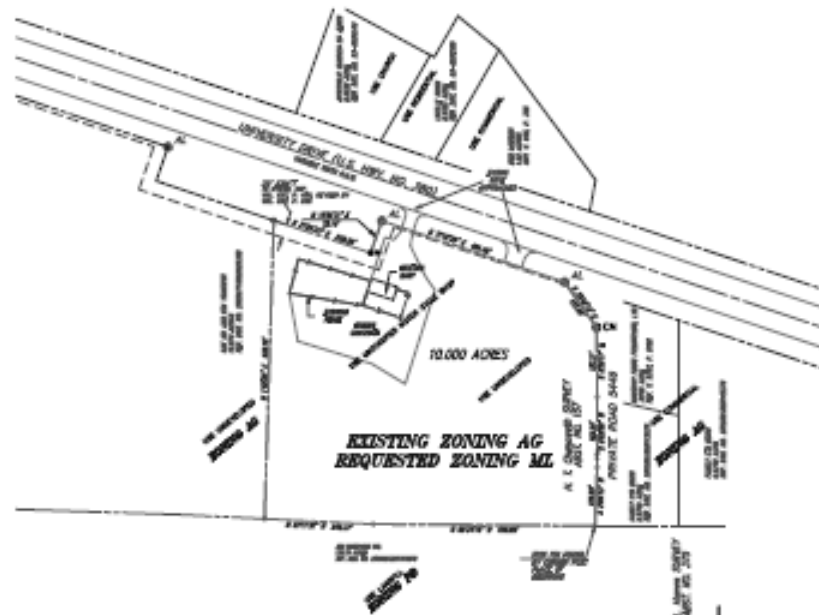
Case: 13-093Z

--- 200' Notification Buffer



DISCLAIMER: This map and information contained in it were developed exclusively for use by the City of McKinney. Any use or reliance on this map by anyone else is at that party's risk and without liability to the City of McKinney, its officials or employees for any discrepancies, errors, or variances which may exist.

Proposed Zoning Exhibit



RESOLUTION 1000 Series of laws
 Whereas a public hearing was held on the 1st day of December 1999 at the City of...
 and whereas the City Council...
 Now, therefore, the City Council...
 Resolves that the City Council...
 Be it enacted by the City Council...

NOTE: THE CITY ENGINEER AND PLANNING DEPARTMENT HAS REVIEWED THIS ZONING MAP AND HAS DETERMINED THAT IT COMPLIES WITH THE CITY OF...
 THE CITY ENGINEER'S OFFICE IS AT...
 THE PLANNING DEPARTMENT IS AT...

LEGEND

---	EXISTING ZONING
---	REQUESTED ZONING
---	...
---	...
---	...
---	...



RECEIVED
 City Clerk's Office at 1:00 pm, May 13, 2004

STEVEN ROBERT A. PHENNEL'S 10 ACRES
 ZONING MAP NO. 1000
 City of...
 Planning Department
 City Clerk's Office