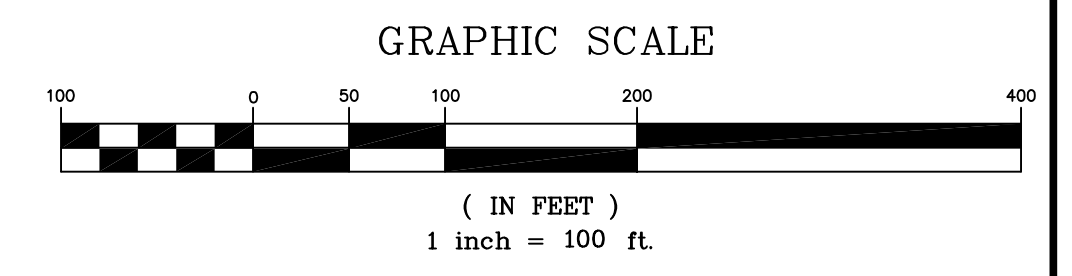


VICINITY MAP
(NOT TO SCALE)



LINE	BEARING	DISTANCE
L1	N42°57'08"E	21.47'
L2	S76°46'08"E	17.00'
L3	S14°49'51"W	22.68'
L4	S88°48'45"W	25.00'
L5	N36°57'22"E	118.62'
L6	N04°19'46"E	46.52'
L7	N42°15'15"E	71.89'
L8	N76°42'33"E	236.37'
L9	N76°42'33"E	319.46'
L10	N56°09'41"E	55.24'
L11	N76°42'33"E	395.50'
L12	N01°11'15"W	183.33'
L13	N36°57'22"E	118.62'
L14	N04°19'46"E	31.13'
L15	N01°11'15"W	230.22'
L16	N36°57'22"E	118.62'
L17	N58°48'48"E	31.75'
L18	N42°15'15"E	128.19'
L19	S46°32'06"E	21.08'
L20	N38°30'00"E	23.09'
L21	N52°19'33"W	18.82'
L22	N21°25'11"E	89.85'
L23	N48°25'16"E	21.55'
L24	N39°45'44"W	21.55'
L25	S75°10'09"E	26.46'
L26	S01°04'30"E	20.85'
L27	N44°37'44"E	138.43'
L28	N39°51'38"E	89.32'
L29	N21°25'11"E	89.85'
L30	N61°50'39"E	22.84'
L31	S80°47'33"E	94.49'
L32	N38°23'43"W	23.21'
L33	N00°54'29"E	76.12'

NO.	DELTA	RADIUS	LENGTH	TANGENT	CHORD BEARING	CHORD
C1	46°33'36"	350.00'	284.41'	150.58'	N85°32'00"E	276.65'
C2	24°36'39"	350.00'	150.34'	76.35'	N29°56'56"E	145.19'
C3	59°03'57"	350.00'	360.81'	198.29'	S47°10'35"W	345.05'
C4	33°45'25"	350.00'	206.21'	106.19'	N59°49'51"E	203.24'
C5	26°31'18"	1000.00'	462.89'	235.67'	N89°58'13"E	458.77'
C6	38°08'37"	400.00'	266.29'	138.29'	S17°53'04"W	261.40'
C7	32°37'36"	350.00'	199.31'	102.44'	N20°38'34"E	196.62'
C8	27°00'00"	50.00'	235.82'	50.00'	N43°48'45"E	70.71'
C9	32°47'33"	210.00'	120.19'	61.79'	N60°18'47"E	118.56'
C10	24°36'39"	210.00'	90.20'	45.81'	N29°56'56"E	89.51'
C11	59°03'57"	490.00'	505.14'	277.60'	S47°10'35"W	483.06'
C12	6°32'09"	1140.00'	169.83'	85.07'	N80°58'38"E	169.68'
C13	23°57'48"	860.00'	359.69'	182.51'	N88°41'27"E	357.07'
C14	38°08'37"	260.00'	173.09'	89.89'	S17°53'04"W	169.91'
C15	32°37'36"	490.00'	279.03'	143.41'	N20°38'34"E	275.27'
C16	107°53'37"	50.00'	94.18'	68.73'	N75°10'09"W	80.86'
C17	38°08'37"	540.00'	359.50'	186.69'	S17°53'04"W	352.89'
C18	32°22'13"	210.00'	118.64'	60.95'	N20°46'16"E	117.07'
C19	39°19'03"	490.00'	336.25'	175.05'	N61°54'47"E	329.69'
C20	24°36'39"	490.00'	210.47'	106.89'	N29°56'56"E	208.86'
C21	36°15'57"	210.00'	132.92'	68.77'	S35°46'35"W	130.71'

LEGEND

- IRF IRON ROD FOUND
- U.E. UTILITY EASEMENT
- R.O.W. RIGHT-OF-WAY
- CA COMMON AREA
- S.F. SQUARE FEET
- M.F.F.E. MINIMUM FINISHED FLOOR ELEVATION

"PRELIMINARY-FINAL PLAT FOR REVIEW PURPOSES ONLY"

PRELIMINARY-FINAL PLAT

WESTLAKE

31.631 ACRES OUT OF
 JAMES HERNDON SURVEY, ABSTRACT NO. 391
 WILLIAM D. THOMPSON SURVEY, ABSTRACT NO. 891
 FRANCIS C. WILMETH SURVEY, ABSTRACT NO. 998

95 RESIDENTIAL LOTS
 4 COMMON AREA LOTS

CITY OF MCKINNEY, COLLIN COUNTY, TEXAS

LIFESTYLE COMMUNITIES OF TEXAS, L.L.P. OWNER
 1200 S Main Street, Suite 1400 (817)865-1000
 Grapevine, Texas 76051

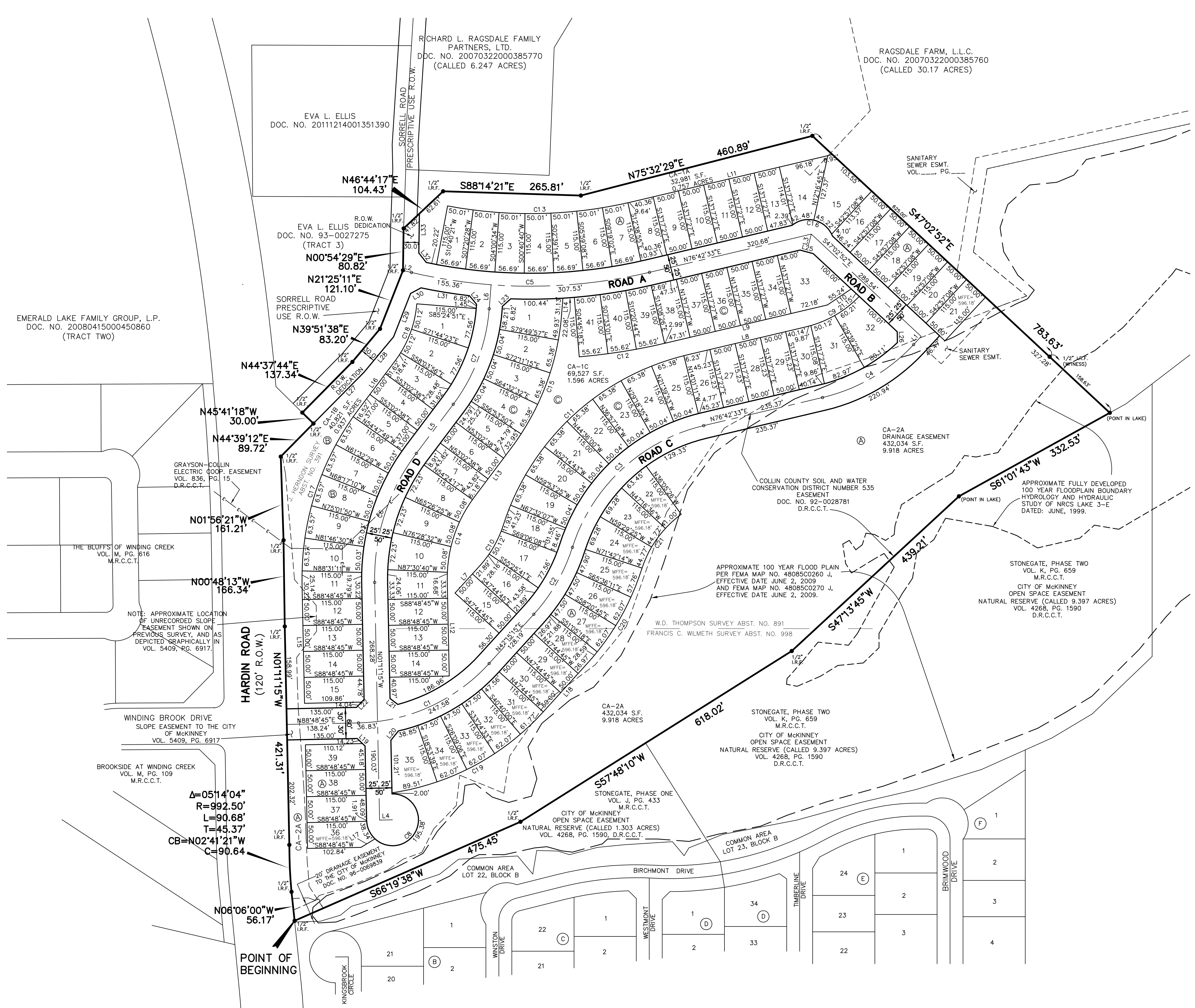
HARDIN LAKE, LLC DEVELOPER
 3131 Harvard Avenue, Suite 103 (214)453-0629
 Dallas, TX 75205

JB PARTNERS, INC. SURVEYOR/ENGINEER
 16301 Quorum Drive, Suite 200 B (972)248-7676
 Addison, Texas 75001

REVISED: AUGUST 24, 2012
 SUBMITTED: AUGUST 09, 2012

NOTES:

- 1.) ALL PROPOSED LOTS SITUATED IN WHOLE OR IN PART WITHIN THE CITY'S CORPORATE LIMITS COMPLY WITH THE MINIMUM SIZE REQUIREMENTS OF THE GOVERNING ZONING DISTRICT.
- 2.) ALL COMMON AREAS TO BE DEDICATED TO AND MAINTAINED BY THE HOMEOWNERS ASSOCIATION WITH THE EXCEPTION OF LOT CA-2A, BLOCK A.
- 3.) HIKE AND BIKE TRAIL RUNS PARALLEL TO CA-2A. IF DAMAGED DURING CONSTRUCTION REPAIR WILL BE REQUIRED.



Plotted by: mhp Plot Date: 8/27/2012 3:00 PM

Drawing: H:\Projects\JB0005_Hardin Boulevard Tract, McKinney, Texas.dwg X:\JB0005P1.dwg