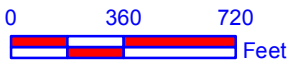
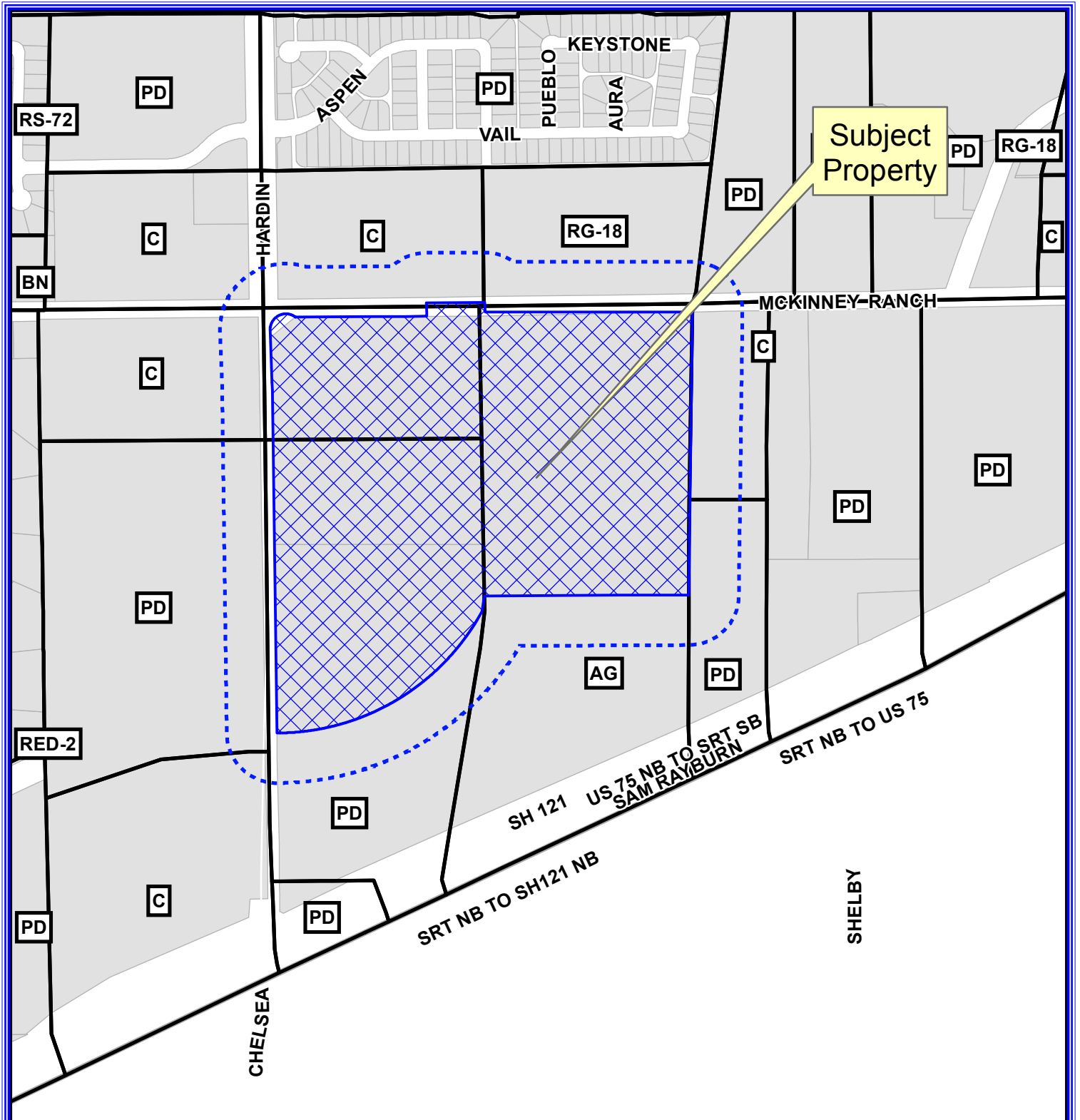


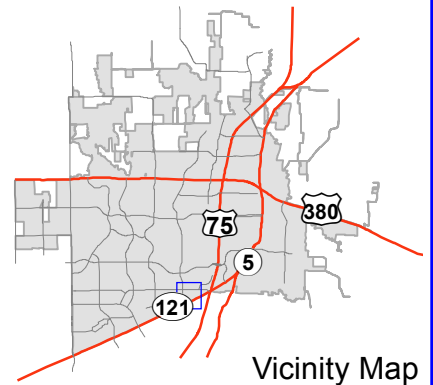
Exhibit "A"



Notification Map

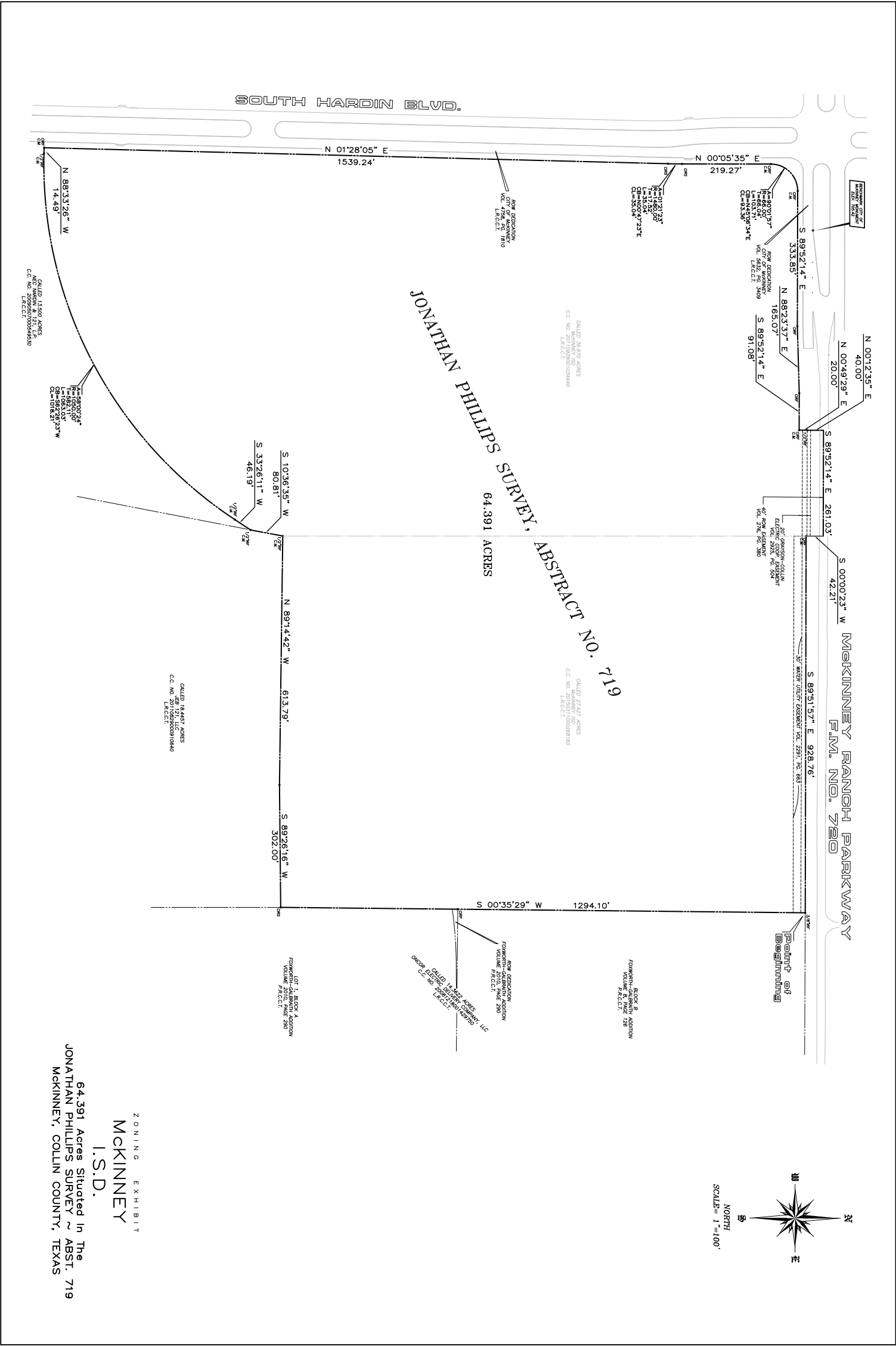
Case: 16-018Z

--- 200' Buffer



Path: S:\MCKGIS\Notification\Projects\2016\16-018Z.mxd

DISCLAIMER: This map and information contained in it were developed exclusively for use by the City of McKinney. Any use or reliance on this map by anyone else is at that party's risk and without liability to the City of McKinney, its officials or employees for any discrepancies, errors, or variances which may exist.



JONATHAN PHILLIPS SURVEY, ABSTRACT NO. 719

64.391 ACRES

SOUTH HARDIN BLVD.

McKINNEY RANCH PARKWAY
F.M. NO. 720

Point of Beginning



ZONING EXHIBIT
McKINNEY

I.S.D.
64.391 Acres Situated in The
JONATHAN PHILLIPS SURVEY ~ ABST. 719
McKINNEY, COLLIN COUNTY, TEXAS