

Land Use and Tax Base Summary for Module 29

15-029Z Rezoning Request (Page 1)

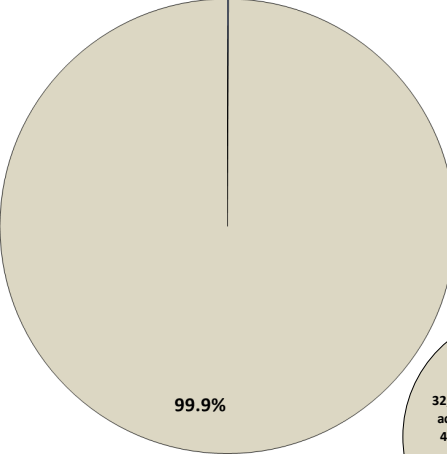
Land Use Summary

Based on information obtained from the Collin Central Appraisal District's certified tax roll in conjunction with approved zoning requests (for parcels currently undeveloped), below is a summary of existing and anticipated land uses in this module as of January 2014.

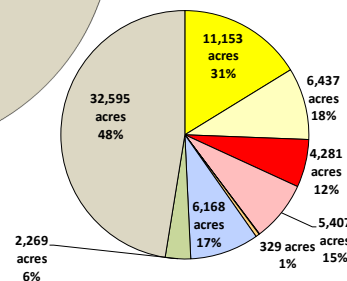
	Acres
Residential	0.0
Vacant Residential	0.0
Total Residential	0.0 (0%)
Non-Residential	0.0
Vacant Non-Residential	0.0
Total Non-Residential	0.0 (0%)
Mixed-Use	0.0
Vacant Mixed-Use	0.0
Total Mixed-Use¹	0 (0%)
Institutional (non-taxable)	1.3
Total Institutional (non-taxable)	1.3 (0.09%)
Agricultural/Undetermined	0.0
Total Agricultural/Undetermined²	0.0 (0%)
Total Acres (city limits only)	1.3 (0.09%)
Extraterritorial Jurisdiction (ETJ)	1,415.1
Total Extraterritorial Jurisdiction³	1,415.1 (99.9%)
Total Acres	1,416.4

Module 29

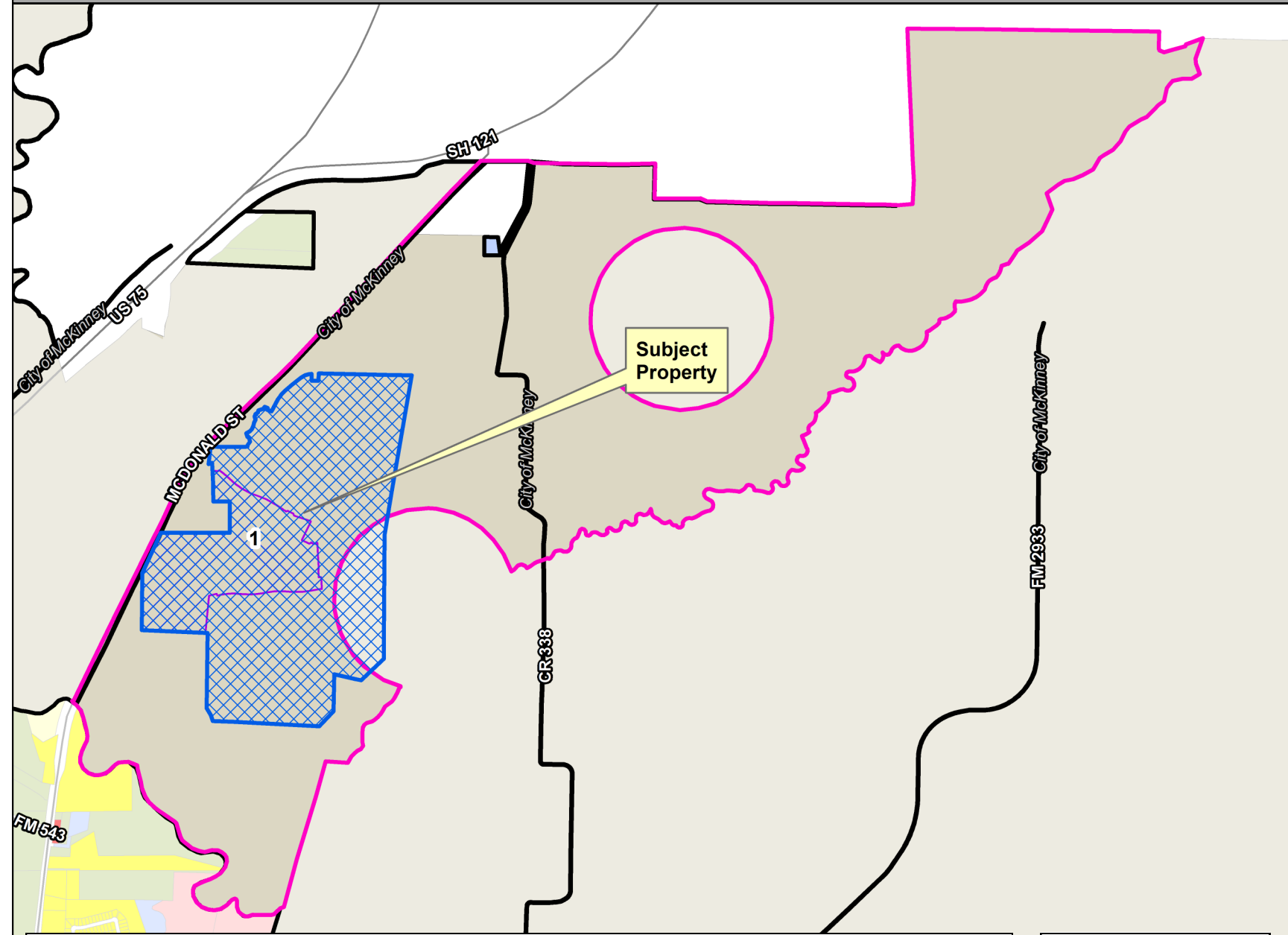
0.09% Institutional



Citywide and ETJ

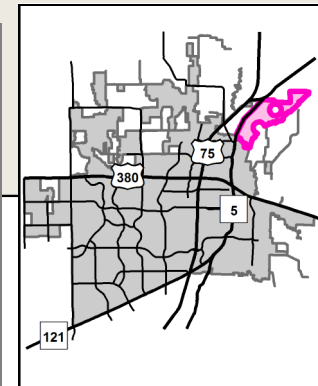


Module 29 Map



Approved Projects Impacting Land Use or Tax Base (2014, 2015)⁴

Map ID	Case Number	Project Name	Project Description	Acres
1	14-218RP	Willow Wood Phase 1	Record Plat for 192 single family residential lots and 10 common areas	75.5



Tax Base Summary⁵

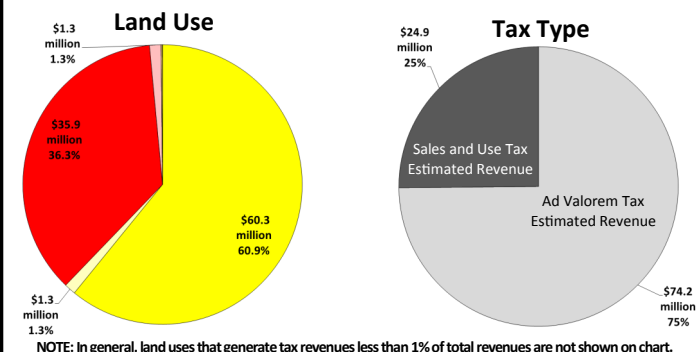
Based on the existing land uses in this module, below is a summary of the estimated tax revenues as of January 2014. These revenues are aggregated from Collin Central Appraisal District (for Ad Valorem taxes) and from the Texas Comptroller of Public Accounts (for Sales and Use taxes).

Land Use	Ad Valorem	Sales Tax	Total
Residential	N/A	N/A	N/A
Non-Residential	N/A	N/A	N/A
Mixed-Use	N/A	N/A	N/A
Tax Revenue from Developed Land	N/A	N/A	N/A
Vacant Residential	N/A	N/A	N/A
Vacant Non-Residential	N/A	N/A	N/A
Vacant Mixed-Use	N/A	N/A	N/A
Agricultural/Undetermined	N/A	N/A	N/A
Tax Revenue from Undeveloped Land	N/A	N/A	N/A
Grand Total (city limits only)	N/A	N/A	N/A

Module 29 Tax Revenues

This Module is currently located almost entirely within McKinney's ETJ; therefore, Ad Valorem Tax Revenue and Sales and Use Tax Revenue are not applicable.

Citywide Tax Revenues



NOTE: In general, land uses that generate tax revenues less than 1% of total revenues are not shown on chart.

1. Mixed-Use land uses reflect those parcels for which zoning allows for residential and/or non-residential horizontal or vertically-integrated uses.
 2. Agricultural/Undetermined land uses reflect those parcels with agricultural zoning for which no future use is currently defined.
 3. Properties located in the ETJ are not included in the Land Use Summary and the Tax Base Summary because they fall outside of the city's land use and taxing jurisdiction.
 4. Zoning, site plan and record plat cases approved after the certified tax roll of January 1, 2014 and change land use and/or vacancy status. These cases are not included in the Land Use Summary or the Tax Base Summary.
 5. Institutional (non-taxable) properties are not included in the Tax Base Summary because these properties do not generate taxes. Estimated tax revenues do not include any property exemptions, delinquencies, etc. and; therefore, may not reflect actual collection amounts.

DISCLAIMER: This map and information contained in it were developed exclusively for use by the City of McKinney. Any use or reliance on this map by anyone else is at that party's risk and without liability to the City of McKinney, its officials or employees for any discrepancies, errors or variances which may exist.

Land Use and Tax Base Summary for Module 57

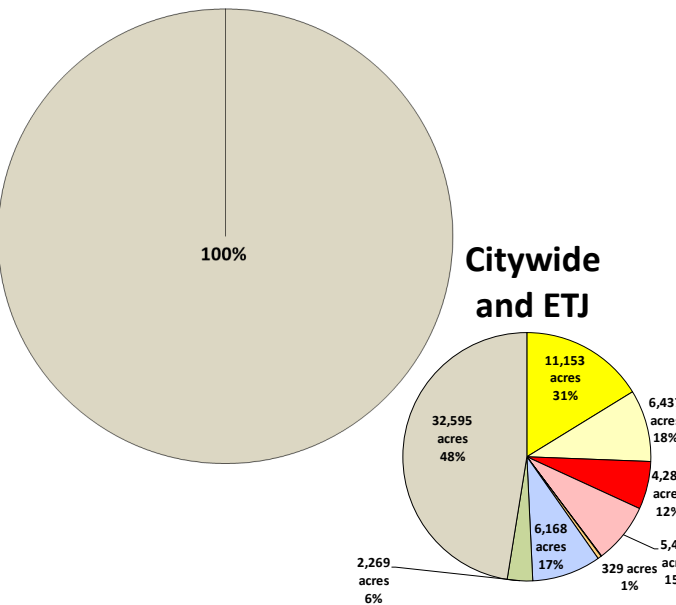
15-029Z Rezoning Request (Page 2)

Land Use Summary

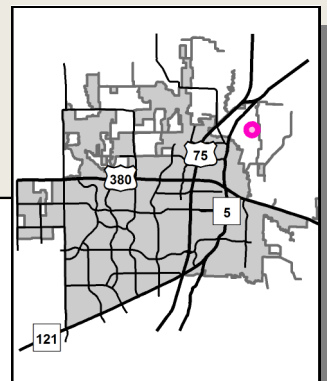
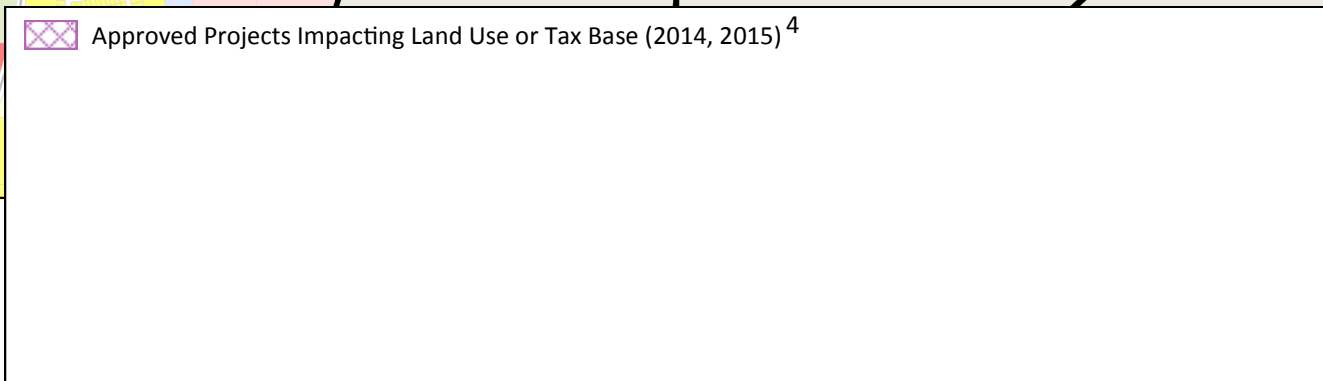
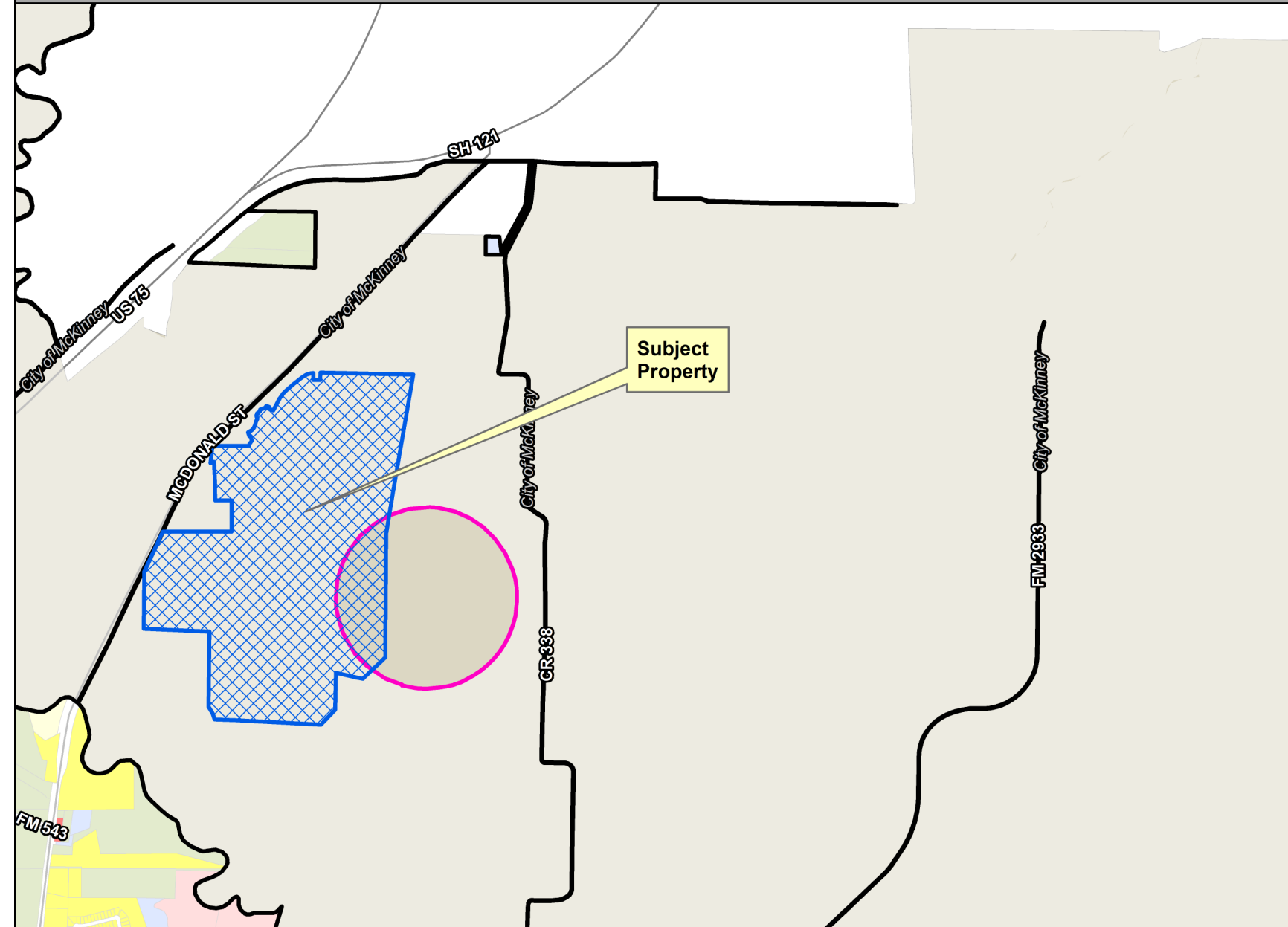
Based on information obtained from the Collin Central Appraisal District's certified tax roll in conjunction with approved zoning requests (for parcels currently undeveloped), below is a summary of existing and anticipated land uses in this module as of January 2014.

	Acres
Residential	0.0
Vacant Residential	0.0
Total Residential	0.0 (0%)
Non-Residential	0.0
Vacant Non-Residential	0.0
Total Non-Residential	0.0 (0%)
Mixed-Use	0.0
Vacant Mixed-Use	0.0
Total Mixed-Use¹	0 (0%)
Institutional (non-taxable)	0.0
Total Institutional (non-taxable)	0.0 (0%)
Agricultural/Undetermined	0.0
Total Agricultural/Undetermined²	0.0 (0%)
Total Acres (city limits only)	0.0 (0%)
Extraterritorial Jurisdiction (ETJ)	125.6
Total Extraterritorial Jurisdiction³	125.6 (100%)
Total Acres	125.6

Module 57



Module 57 Map



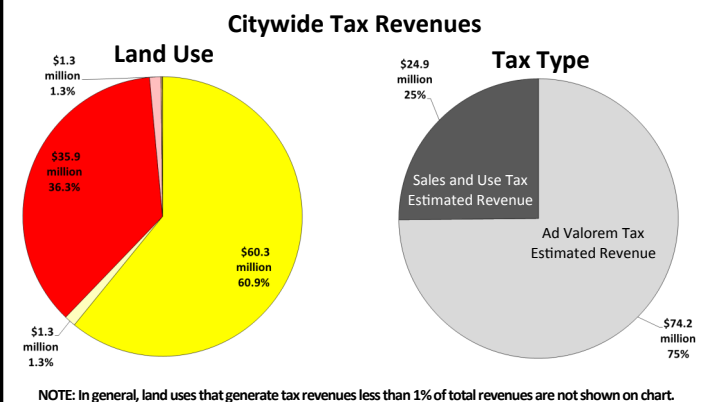
Tax Base Summary⁵

Based on the existing land uses in this module, below is a summary of the estimated tax revenues as of January 2014. These revenues are aggregated from Collin Central Appraisal District (for Ad Valorem taxes) and from the Texas Comptroller of Public Accounts (for Sales and Use taxes).

Land Use	Ad Valorem	Sales Tax	Total
Residential	N/A	N/A	N/A
Non-Residential	N/A	N/A	N/A
Mixed-Use	N/A	N/A	N/A
Tax Revenue from Developed Land	N/A	N/A	N/A
Vacant Residential	N/A	N/A	N/A
Vacant Non-Residential	N/A	N/A	N/A
Vacant Mixed-Use	N/A	N/A	N/A
Agricultural/Undetermined	N/A	N/A	N/A
Tax Revenue from Undeveloped Land	N/A	N/A	N/A
Grand Total (city limits only)	N/A	N/A	N/A

Module 57 Tax Revenues

This Module is currently located entirely within McKinney's ETJ; therefore, Ad Valorem Tax Revenue and Sales and Use Tax Revenue are not applicable.



NOTE: In general, land uses that generate tax revenues less than 1% of total revenues are not shown on chart.

1. Mixed-Use land uses reflect those parcels for which zoning allows for residential and/or non-residential horizontal or vertically-integrated uses.
 2. Agricultural/Undetermined land uses reflect those parcels with agricultural zoning for which no future use is currently defined.
 3. Properties located in the ETJ are not included in the Land Use Summary and the Tax Base Summary because they fall outside of the city's land use and taxing jurisdiction.
 4. Zoning, site plan and record plat cases approved after the certified tax roll of January 1, 2014 and change land use and/or vacancy status. These cases are not included in the Land Use Summary or the Tax Base Summary.
 5. Institutional (non-taxable) properties are not included in the Tax Base Summary because these properties do not generate taxes. Estimated tax revenues do not include any property exemptions, delinquencies, etc. and; therefore, may not reflect actual collection amounts.

DISCLAIMER: This map and information contained in it were developed exclusively for use by the City of McKinney. Any use or reliance on this map by anyone else is at that party's risk and without liability to the City of McKinney, its officials or employees for any discrepancies, errors or variances which may exist.

