

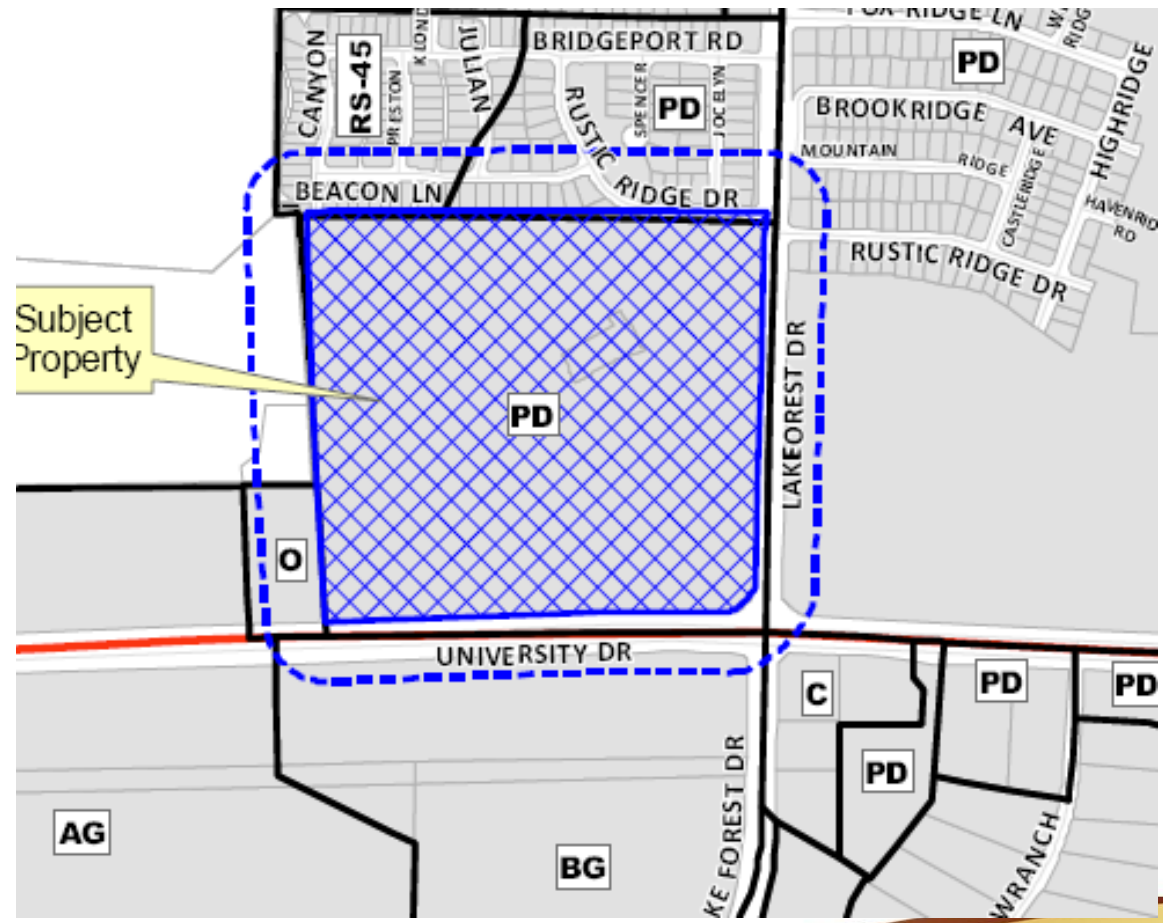
# Case No. 11-131M

## Baylor Hospital Signage

*Located on the Northwest Corner of  
Lake Forest Drive and U.S. Highway 380*



# Location Map



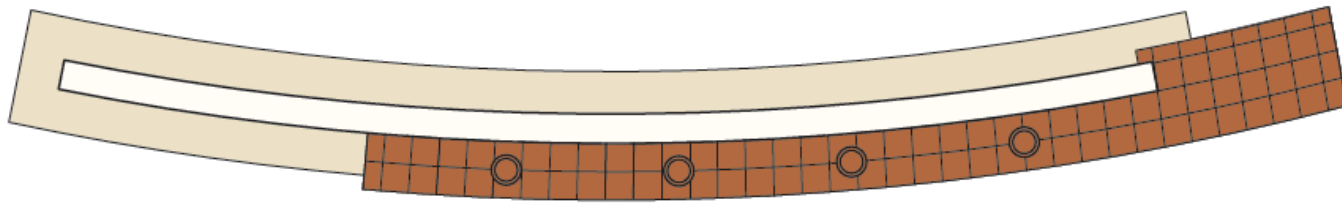
# Aerial Exhibit



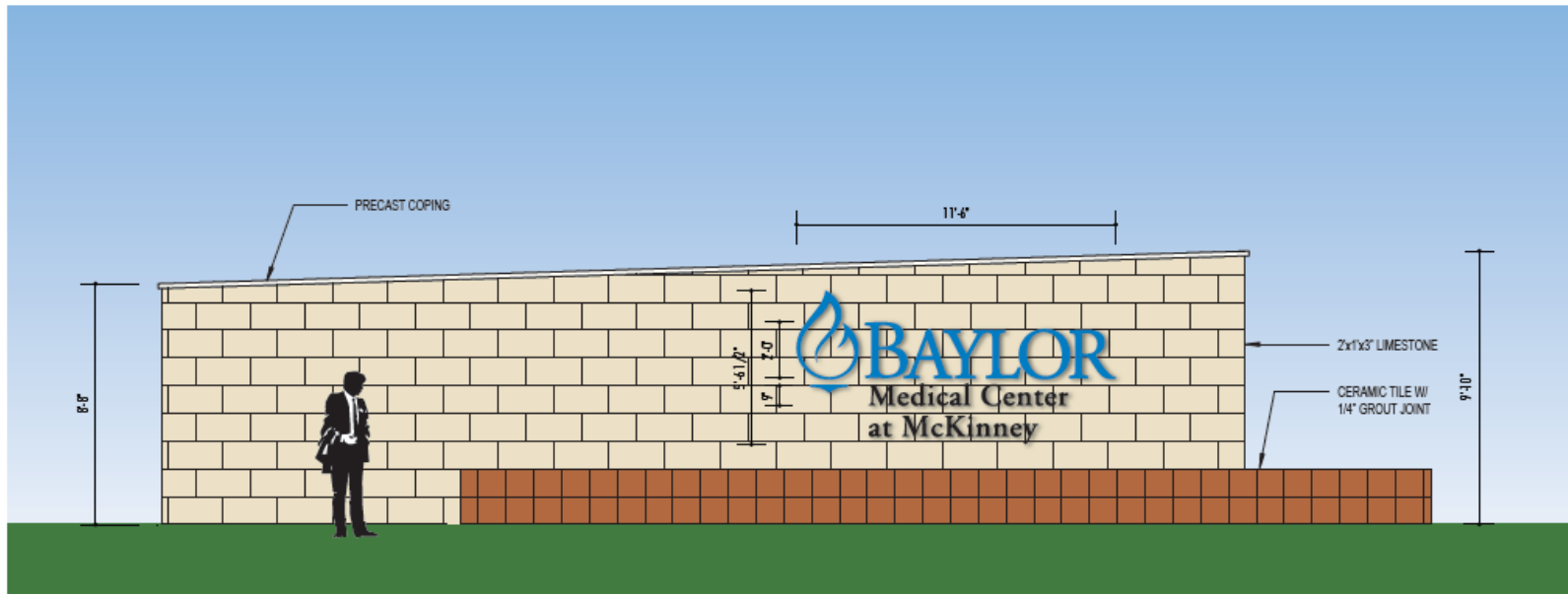
# Approved Corner Development Identity Sign



# Proposed Corner Development Identity Sign



2 | Plan View  
Scale: 1/4"=1'-0"



1 | Front Elevation  
Scale: 1/4"=1'-0"

# Proposed Corner Development Identity Sign

- Reduced the effective sign area from 260 square feet to 64 square feet (meets current sign ordinance maximum)
- Reduced the sign height from 10' to 9'10"
- Utilizes the same finishing materials as the hospital and resembles the overall shape of the hospital building
- Removed the water feature from monumentation

## STAFF RECOMMENDATION:

Staff recommends approval of the amendment to the proposed comprehensive sign package.