

Case No. 11-153M

Consider/Discuss/Act on a Resolution
Defining Truck Fueling Station and Truck
Stop and Establishing which Zoning
District(s) are Appropriate for these New
and Unlisted Land Uses.

Truck Fueling Stations

A “*Truck Fueling Station*” shall be defined as a retail fuel sales facility selling fuel for motor vehicles and semi-trailer trucks with at least 3 axles that are designed to tow trailers. The truck fueling station may be attended or automated.

Truck Fueling Stations

A “*Truck Fueling Station*” shall be permitted, subject to approval of a specific use permit, within the “ML” – Light Manufacturing and “MH” – Heavy Manufacturing zoning districts.

Truck Stops


A “*Truck Stop*” shall be defined as any premises that provides parking facilities for semi-trailer trucks with at least 3 axles that are designed to tow trailers in conjunction with one or more other uses including, but not limited to, the incidental sale of accessories or equipment for such vehicles, fuel sales, truck scales/weigh stations, restroom and showering facilities, restaurant facilities, truck washing facilities, and/or other uses typically associated with semi-trailer truck resting areas.

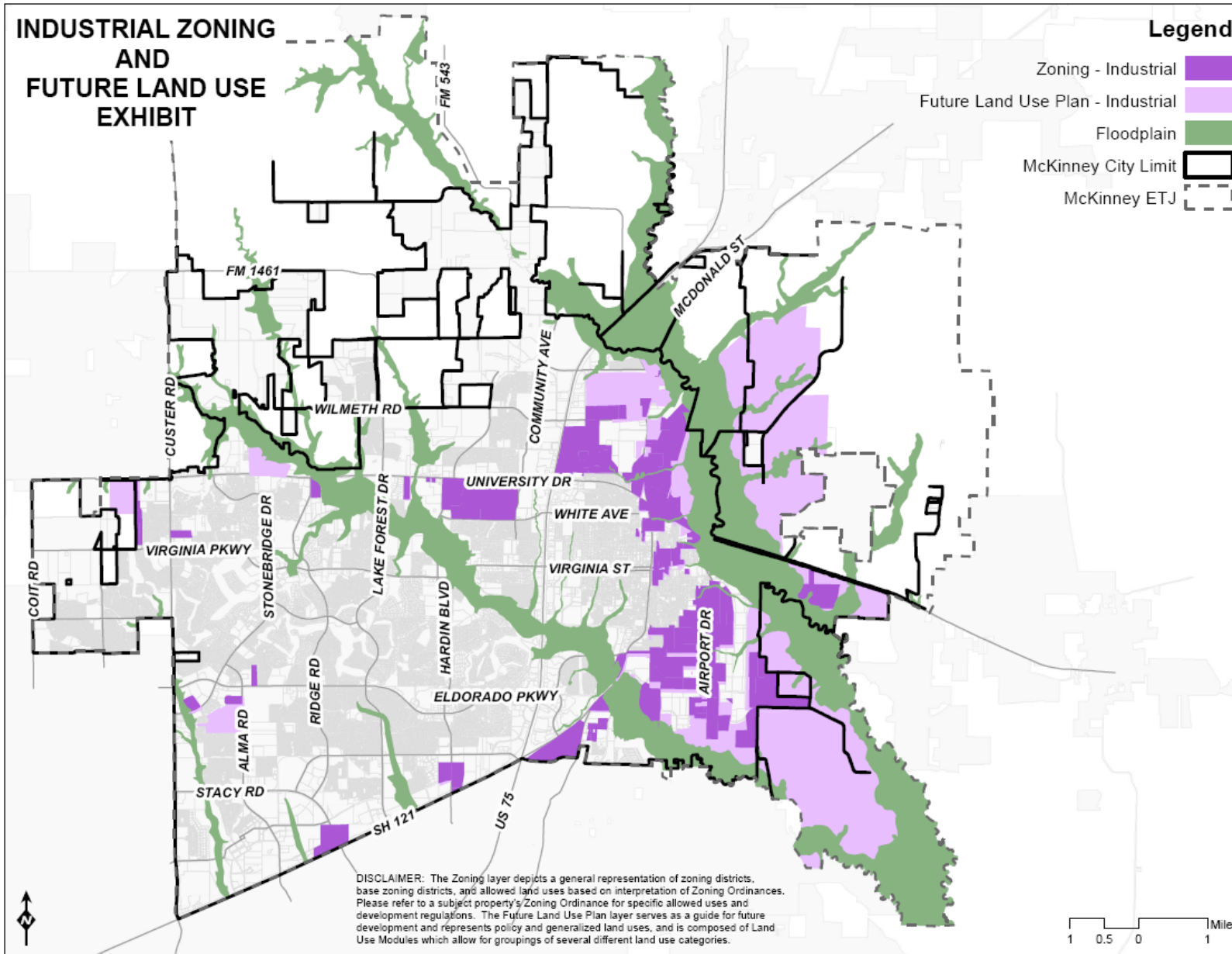
Truck Stops

A “*Truck Stop*” shall be prohibited in all zoning districts within the City of McKinney.

INDUSTRIAL ZONING AND FUTURE LAND USE EXHIBIT

Legend

- Zoning - Industrial 
- Future Land Use Plan - Industrial 
- Floodplain 
- McKinney City Limit 
- McKinney ETJ 



Staff Recommendation

Staff recommends approval of the proposed resolution.